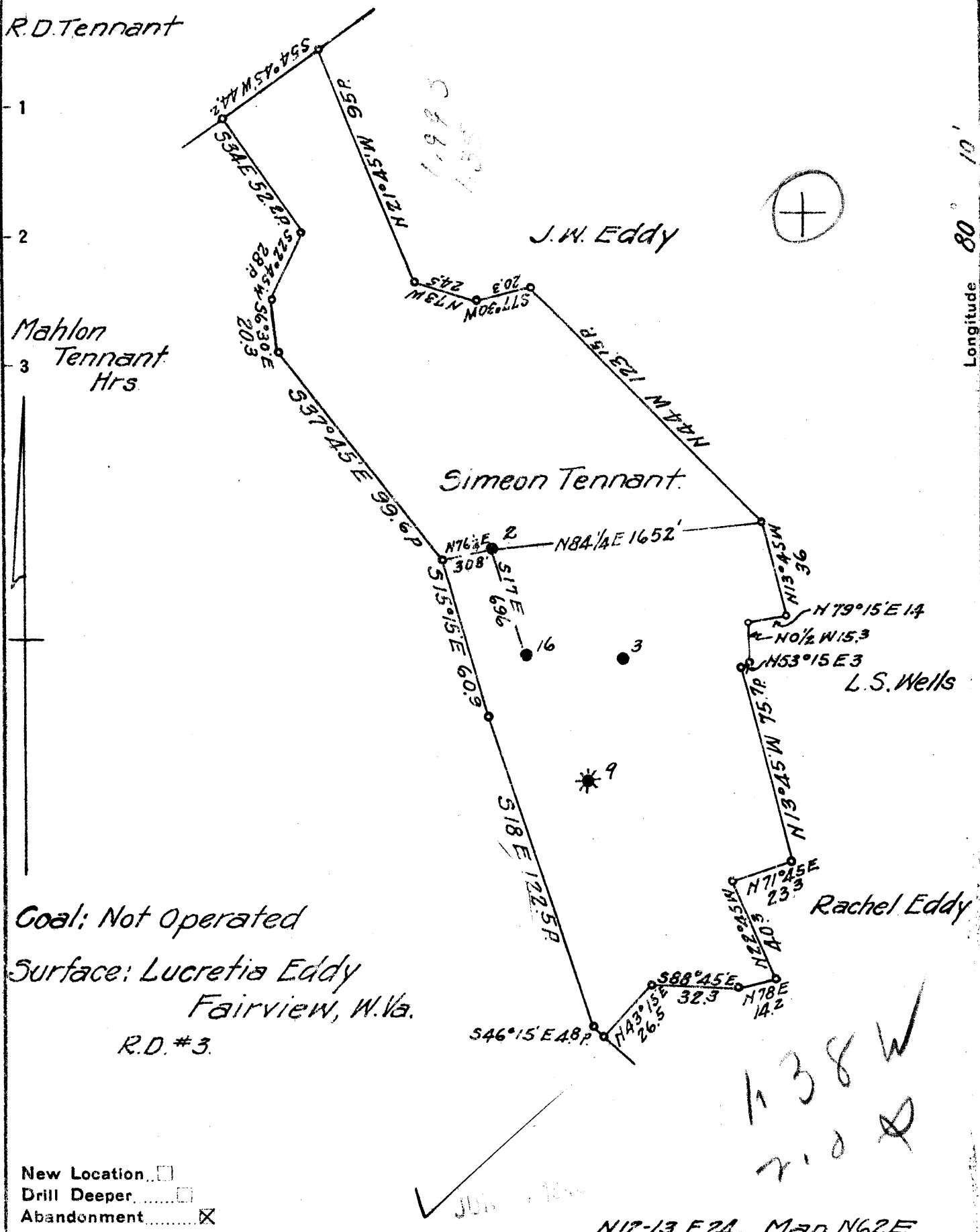


Latitude 39 40

Longitude 80 10'



Coal; Not Operated
 Surface: Lucretia Eddy
 Fairview, W.Va.
 R.D. #3.

New Location
 Drill Deeper
 Abandonment

N12-13 E2A Map N62E

Company	South Penn Natural Gas Co.
Address	Parkersburg, W.Va.
Farm	Simeon Tennant
Tract	Acres 260 Lease No. 1340
Well (Farm) No.	2 Serial No.
Elevation (Spirit Level)	1358.43
Quadrangle	Blacksville
County	Monongalia District Clay
Engineer	Emmon Haines
Engineer's Registration No.	
File No.	Drawing No.
Date	Mar. 17, 1943 Scale 1"=800'

STATE OF WEST VIRGINIA
 DEPARTMENT OF MINES
 OIL AND GAS DIVISION
 CHARLESTON

WELL LOCATION MAP
 FILE NO. MON-288-A

+ Denotes location of well on United States Topographic Maps, scale 1 to 62,500, latitude and longitude lines being represented by border lines as shown.

- Denotes one inch spaces on border line of original tracing.

SIMEON TENNANT NO. 2 - SOUTH PENN N.G. Co. - MON-288-A

STATE OF WEST VIRGINIA
DEPARTMENT OF MINES
OIL AND GAS DIVISION

340

WELL RECORD

Permit No. 288-A

Oil or Gas Well OIL
(KIND)

Company South Penn Natural Gas Company
Address Union Trust Bldg. Parkersburg, W. Va.
Farm Simeon Tennant Acres 260
Location (waters) - - -
Well No. 2 Elev. 1358.43
District Clay County Monongalia
The surface of tract is owned in fee by Lucretia Eddy
R. D. No. 3, Address Fairview, W. Va.
Mineral rights are owned by Lucretia M. Eddy et al
R. D. No. 3, Address Fairview, W. Va.
Drilling commenced Aug. 3, 1892
Drilling completed Jan. 23, 1893
Date Shot 10-12-11 From - To -
With 60 qts.

Casing and Tubing	Used in Drilling	Left in Well	Packers
Size			
16			Kind of Packer <u>-</u>
13			<u>-</u>
10	<u>835' (Pulled)</u>		Size of <u>-</u>
8 1/4	<u>759'</u>		<u>-</u>
6 3/4	<u>1850'</u>		Depth set <u>-</u>
5 3/16	<u>297'</u>		<u>-</u>
3			Perf. top <u>-</u>
2	<u>2225'</u>		Perf. bottom <u>-</u>
Liners Used			Perf. top <u>-</u>
			Perf. bottom <u>-</u>

Open Flow /10ths Water in -- Inch
/10ths Merc. in -- Inch
Volume -- Cu. Ft.
Rock Pressure -- lbs. -- hrs.
Oil 200 bbls., 1st 24 hrs.
Fresh water --- feet --- feet
Salt water --- feet --- feet

CASING CEMENTED - SIZE - No. Ft. - Date -

COAL WAS ENCOUNTERED AT 825 FEET 96? INCHES
- FEET - INCHES - FEET - INCHES
- FEET - INCHES - FEET - INCHES

Formation	Color	Hard or Soft	Top	Bottom	Oil, Gas or Water	Depth Found	Remarks
<u>Pittsburgh Coal</u>			<u>825</u>	<u>833?</u>			
<u>Top Big Injun</u>			<u>2132</u>				
					<u>1st Pay</u>	<u>2208</u>	
					<u>2nd Pay</u>	<u>2219</u>	
<u>Total Depth</u>				<u>2236</u>			

MAY 1943
WEST VIRGINIA

Formation	Color	Hard or Soft	Top	Bottom	Oil, Gas or Water	Depth Found	Remarks

Date May 17, 1943., 194

APPROVED SOUTH PENN NATURAL GAS COMPANY, Owner

By *Elton E. Young* Land Agent.
(Title)