

Latitude

Longitude

+
 | 2.28 s
 | 1.39 w

Topo Location

7.5' Loc. _____ 15' Loc. _____
 _____ (calc.) _____

Company Pitts + WV Gas

Farm WJ Clark # 5271

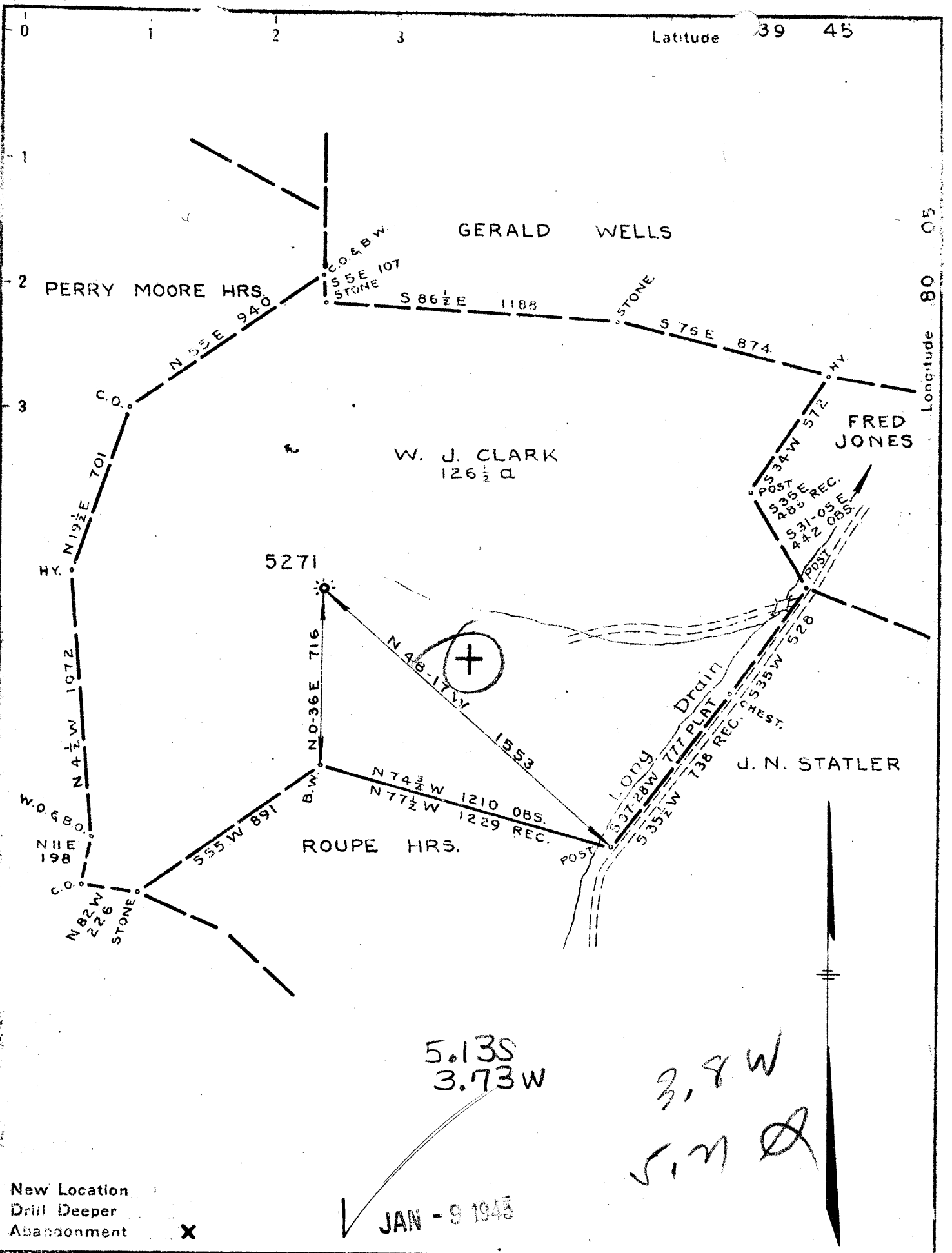
15' Quad _____
(sec.)

7.5' Quad Blacksville

District Clay

WELL LOCATION PLAT

County 061 **Permit** 30313



New Location
 Drill Deeper
 Abandonment **X**

JAN - 9 1945

Company	PITTSBURGH & W. VA. GAS
Address	CLARKSBURG, W. VA.
Farm	W. J. CLARK
Tract	Acres 126 1/2 Lease No. 15316
Well (Farm) No.	ONE Serial No. 5271
Elevation (Spirit Level)	1375 V.A.
Quadrangle	BLACKSVILLE N. W. 4 2
County	MONONGALIA District CLAY
Engineer	Kenneth B Moore
Engineer's Registration No.	
File No.	V. 132 - P. 146 Drawing No.
Date	DEC. 21, 1944 Scale 1" = 500'

STATE OF WEST VIRGINIA DEPARTMENT OF MINES OIL AND GAS DIVISION CHARLESTON
WELL LOCATION MAP
FILE NO. <i>Mon-313-A</i>
+ Denotes location of well on United States Topographic Maps, scale 1 to 62,500. latitude and longitude lines being represented by border lines as shown.
- Denotes one inch spaces on border line of original tracing.
HES

W. J. CLARK No. 1 (5271) - PGH. & W. VA. GAS Co. - MON-313-A