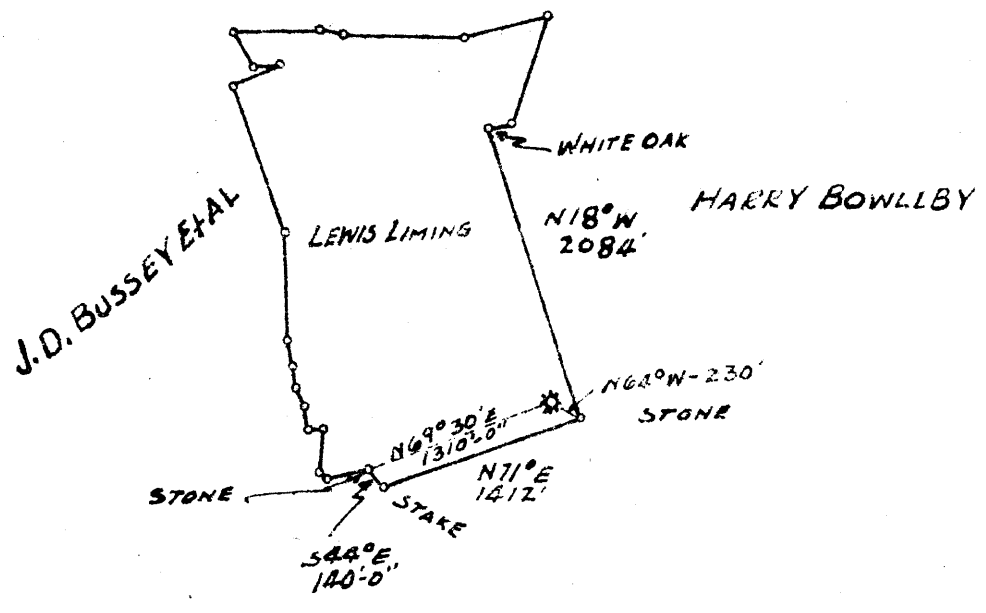


HATTIE HERRINGTON



WEAVER HRS.

2.935  
2.41W

New Location   
Drill Deeper   
Abandonment

MAY 18 1948

*[Handwritten signature]*  
*[Handwritten initials]*

Company FRANK S. ULLOM  
 Address WAYNESBURG, PA.  
 Farm LEWIS LIMING  
 Tract \_\_\_\_\_ Acres 124.5 Lease No. 575  
 Well (Farm) No. 1 Serial No. 573  
 Elevation (Spirit Level) 1372.60  
 Quadrangle BLACKSVILLE - N.E. *(N.E. circled)*  
 County MONONGALIA District CASS  
 Engineer B. B. COUK  
 Engineer's Registration No. 4274-PA  
 File No. \_\_\_\_\_ Drawing No. \_\_\_\_\_  
 Date 4-18-43 Scale 1"=1320'

STATE OF WEST VIRGINIA  
DEPARTMENT OF MINES  
OIL AND GAS DIVISION  
CHARLESTON

WELL LOCATION MAP  
FILE NO. MON-352-A

+ Denotes location of well on United States Topographic Maps, scale 1 to 62,500, latitude and longitude lines being represented by border lines as shown.  
- Denotes one inch spaces on border line of original tracing.



438

STATE OF WEST VIRGINIA  
DEPARTMENT OF MINES  
OIL AND GAS DIVISION

WELL RECORD

Permit No. Ab 352-A

Oil or Gas Well Gas

(KIND)

Company Frank S. Ullom  
Address Waynesburg, Pa  
Farm Lewis Lining Acres 124.5  
Location (waters) Nades Run  
Well No. One (1) Elev. 1372.60  
District Cass County Monongalia  
The surface of tract is owned in fee by Ellsworth Lining  
Address Mt. Morris, Pa.  
Mineral rights are owned by \_\_\_\_\_  
Address \_\_\_\_\_

Casing and Tubing	Used in Drilling	Left in Well	Packers
Size			Kind of Packer
16			
13			
10			Size of
8 1/4			
6 1/2			Depth set
5 3/16	1849	1849	
3			Perf. top
2	1900	1900	Perf. bottom
Liners Used			Perf. top
			Perf. bottom

Drilling commenced Approximately 1915  
Drilling completed " "  
Date Shot No Record From \_\_\_\_\_ To \_\_\_\_\_  
With \_\_\_\_\_  
Open Flow /10ths Water in No Record Inch  
/10ths Merc. in \_\_\_\_\_ Inch  
Volume No Record Cu. Ft.  
Rock Pressure No Record lbs. \_\_\_\_\_ hrs.  
Oil None bbls., 1st 24 hrs.  
Fresh water \_\_\_\_\_ feet \_\_\_\_\_ feet  
Salt water \_\_\_\_\_ feet \_\_\_\_\_ feet

CASING CEMENTED \_\_\_\_\_ SIZE \_\_\_\_\_ No. Ft. \_\_\_\_\_ Date \_\_\_\_\_  
COAL WAS ENCOUNTERED AT 424 FEET 60 est. INCHES  
549 FEET 60 est. INCHES FEET INCHES  
FEET INCHES FEET INCHES

Formation	Color	Hard or Soft	Top	Bottom	Oil, Gas or Water	Depth Found	Remarks
Mapletown Coal			419	424			
Pittsburgh Coal			544	549			
Big Injun Sand			1849	2020	Gas	1914	
Total Depth				2020			

Please note that the original well record stated that the bottom of the Mapletown Coal and the Pittsburgh Coal were encountered at 424 and at 549. The top of these two coals was calculated to occur at approximately 419 and 544. These approximate coal depths were calculated from nearby wells.

