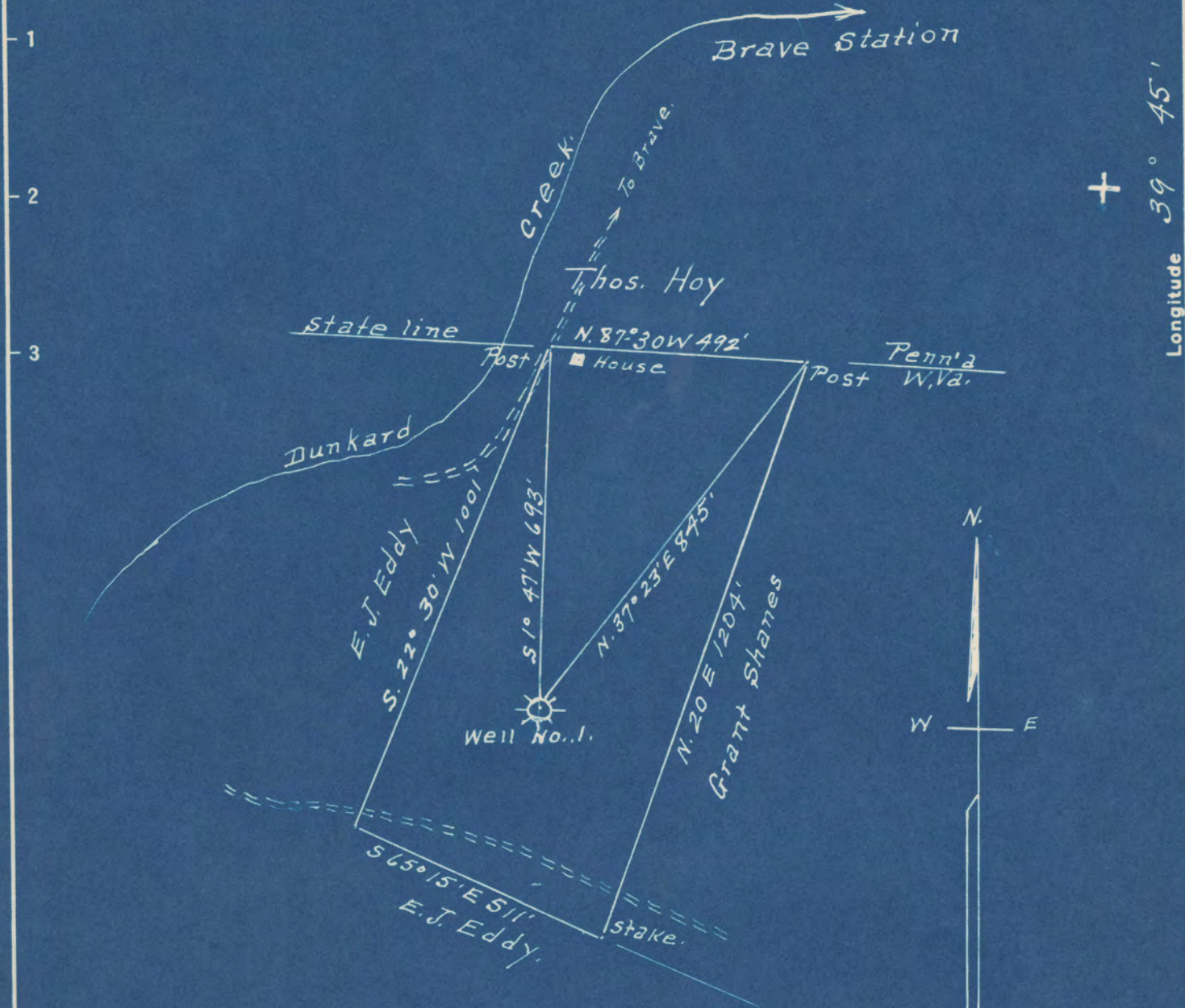


Latitude 39° 15'



Surface - Homer Myers, Brave, Pa.
 Coal - Marva B. Patterson et al. Waynesburg Pa.
 Ocie M. Brickley's Youngstown, Ohio

2.14S
0.52W

2.18 S
0.52 W

New Location
 Drill Deeper
 Abandonment

Company A. M. Snider
 Address Hundred W. Va.
 Farm Nick Collins
 Tract 1 Acres 12+ Lease No. 33318
 Well (Farm) No. 1 Serial No. _____
 Elevation (Spirit Level) 1239' **NE**
 Quadrangle Mannington
 County Monongalia District Battelle
 Engineer A. L. Headley
 Engineer's Registration No. _____
 File No. _____ Drawing No. _____
 Date 6-21-1948 Scale 1" = 300'

STATE OF WEST VIRGINIA
 DEPARTMENT OF MINES
 OIL AND GAS DIVISION
 CHARLESTON

WELL LOCATION MAP
 FILE NO. MON-383-A

+ Denotes location of well on United States Topographic Maps, scale 1 to 62,500, latitude and longitude lines being represented by border lines as shown.

- Denotes one inch spaces on border line of original tracing.

NICK COLLINS NO. 1 WELL.

Battelle District, Monongalia County, W. Va.

By A. W. Saiter, Hundred, W. Va.

Abandoned under permit No. 383-47

On 12 acres, on Lankard Creek.

Elevation, 1239' L.

Surface owned by Homer Myers, Herra, Pa.

Drilling completed May 7, 1901 (to 3216').

Drilling deeper started Aug. 7, 1929; completed Aug. 15, 1929.

Oil, 8 bbls., let 24 hrs.

1 1/2" casing, 119' (pulled); 1" casing, 1324' (pulled); 3/4" casing, 1813' (pulled); 6" casing, 1950'; 5" casing, 2355'.

Coal was encountered at 924'.

Oil well. Record to Dept. of Mines stopped June 30, 1948.

Record to ROT from Mrs. Griffith Sept. 3, 1948. Old File No. 412.

	Top.	Bottom.
Pittsburgh Coal	924 -	...
Big Injun Sand	2200 -	2360
Fifty-foot Sand	2859 -	2940
Campbell Run Sand	3140 -	3160
Gordon Sand (oil, 3301'; 2nd pay, 3205')	3195 -
Total depth		3216
DRILLED DEEPER:		
(Pay, 3216-3219')		
Total depth		3226



412

STATE OF WEST VIRGINIA
DEPARTMENT OF MINES
OIL AND GAS DIVISION

WELL RECORD

Permit No. Ab 383-A

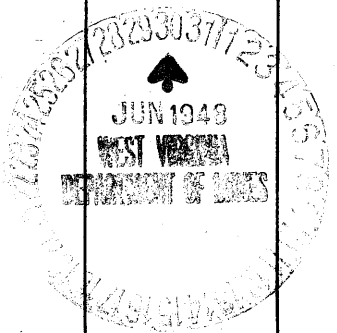
Oil or Gas Well ~~Oil~~ Gas Well (KIND)

Company A. M. Snider
 Address Hundred, West Virginia
 Farm Nick Collins Acres 12
 Location (waters) Dunkard Creek
 Well No. 1 Elev. 1239
 District Battelle County Monongalia
 The surface of tract is owned in fee by Homer Myers
 Address Brave, Pa.
 Mineral rights are owned by _____
 Address _____
 Drilling commenced No Record
 Drilling completed May 7, 1901
 Date Shot _____ From _____ To _____
 With _____
 Open Flow _____ /10ths Water in _____ Inch
 _____ /10ths Merc. in _____ Inch
 Volume _____ Cu. Ft.
 Rock Pressure _____ lbs. _____ hrs.
 Oil 8 bbls. _____ bbls., 1st 24 hrs.
 Fresh water _____ feet _____ feet
 Salt water _____ feet _____ feet

Casing and Tubing	Used in Drilling	Left in Well	Packers
Size			Kind of Packer
16			
13	119	Pulled	
10	1324	Pulled	Size of
8 1/4	1813	Pulled	
6 1/2	1950	1950	Depth set
5 3/16	2355	2355	
3			Perf. top
2			Perf. bottom
Liners Used			Perf. top
			Perf. bottom

CASING CEMENTED _____ SIZE _____ No. Ft. _____ Date _____
 COAL WAS ENCOUNTERED AT 924 FEET ? INCHES
 _____ FEET _____ INCHES FEET _____ INCHES
 _____ FEET _____ INCHES FEET _____ INCHES

Formation	Color	Hard or Soft	Top	Bottom	Oil, Gas or Water	Depth Found	Remarks
Pittsburgh Coal			924				
Big Injun			2200	2360			
Fifty Foot			2859	2940			
C. R. Sand			3140	3160			
Gordon Sand			3195				
Total Depth				3216	Oil 2nd Pay	3201 3205	
Started to Drill Deeper Aug. 7, 1929							
Completed Drilling Deeper Aug. 15, 1929							
Started to Drill Deeper at _____				3216	Pay	3216-3219	
Total Depth				3226			



SEP 3 1949