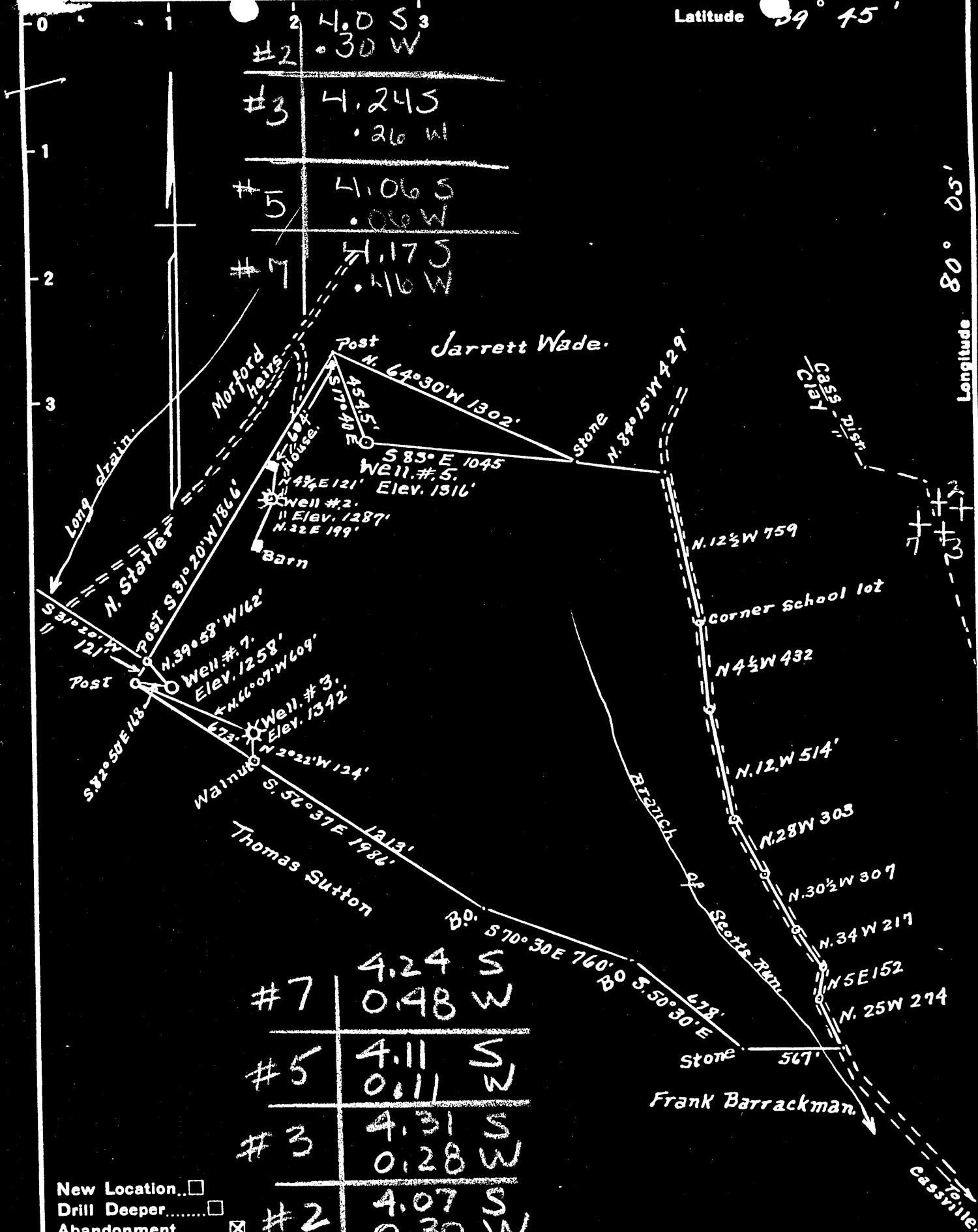


Latitude 39° 45'

Longitude 80° 05'



New Location...   
 Drill Deeper...   
 Abandonment...

Company Washington Oil Co  
 Address Core, W. Va.  
 Farm C.C. Core  
 Tract ONE Acres 129+ Lease No. NC  
 Well (Farm) No. 2-3-5&7 Serial No. #2=1287 #5=1316  
 Elevation (Spirit Level) #3=1342 #7=1258  
 Quadrangle Blacksville W Va.  
 County Monongalia District Clay & Cass  
 Engineer A. L. Headley  
 Engineer's Registration No. \_\_\_\_\_  
 File No. \_\_\_\_\_ Drawing No. \_\_\_\_\_  
 Date 7-5-1948 Scale 1" = 600'

STATE OF WEST VIRGINIA  
 DEPARTMENT OF MINES  
 OIL AND GAS DIVISION  
 CHARLESTON

WELL LOCATION MAP

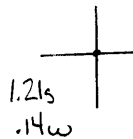
MON-415-A-#7 - Clay  
 FILE NO. MON-416-A-#5  
 MON-417-A-#3  
 MON-418-A-#2

+ Denotes location of well on United States Topographic Maps, scale 1 to 62,500, latitude and longitude lines being represented by border lines as shown.

- Denotes one inch spaces on border line of original tracing.

Latitude

34-42'30"



Longitude

O. well  
 Completed 1896  
 Total depth 2234'  
 Plugged 11-18-48

**Topo Location**

7.5' Loc. \_\_\_\_\_ 15' Loc. \_\_\_\_\_  
 \_\_\_\_\_ (calc.) \_\_\_\_\_

**Company** Washington O Co

**Farm** CC Coro # 5

**15' Quad** \_\_\_\_\_  
(sec.)

**7.5' Quad** Osage

**District** Cass

**WELL LOCATION PLAT**

**County** 061 **Permit** 30416

C. C. CORE NO. 5 WELL.

Cass District, Monongalia County, W. Va.

By Washington Oil Co., Core, W. Va.

Abandoned under permit Mon-416--A7

On 167.24 acres, on Scott Run.

Elevation, 1316' L.

Surface owned by George Statler, Core, W. Va., and minerals by C. C. Core Heirs.

Drilling commenced July 3, 1896; completed Sept. 5, 1896.

Shot March 6, 1907, with 40 qts. nitroglycerine.

Salt water at 2222'.

10" casing, 886'; 8 1/4", 1734'; 6 3/8", 1911'; 5 1/2", 2088' (setter? bottom at 2135'); 2" tubing, 2180'.

Coal was encountered at 752-759 and 834-842'.

Oil well. Abandonment reported to Dept. of Mines Aug. 30, 1948.

Record to RCT from Mrs. Griffith Jan. 5, 1949. Old File No. 446.

	Top.	Bottom.
Coal, black, soft	752 -	759
Coal, black, soft	834 -	842
Sand, gray, hard	1626 -	.....
Sand, Big Injun, gray, soft (oil and salt water, 2222')	2126 -	2234
Total depth		2234



STATE OF WEST VIRGINIA  
DEPARTMENT OF MINES  
OIL AND GAS DIVISION

416

Permit No. 416-A

WELL RECORD

Oil or Gas Well Oil  
(KIND)

Company Washington Oil Company  
 Address Core, W.Va.  
 Farm C.C. Core Acres 167.24  
 Location (waters) Scotts Run  
 Well No. 5 Elev. 1316'  
 District Cass County Monongalia  
 The surface of tract is owned in fee by George Staller  
 Address Core, W.Va.  
 Mineral rights are owned by C.C. Core, Heirs  
 Address \_\_\_\_\_  
 Drilling commenced July 3, 1896  
 Drilling completed Sept. 6, 1896  
 Date Shot 3/6/07 From \_\_\_\_\_ To \_\_\_\_\_  
 With 40 qts. Nitro Glycerine  
 Open Flow /10ths Water in \_\_\_\_\_ Inch  
 /10ths Merc. in \_\_\_\_\_ Inch  
 Volume \_\_\_\_\_ Cu. Ft.  
 Rock Pressure \_\_\_\_\_ lbs. \_\_\_\_\_ hrs.  
 Oil \_\_\_\_\_ bbls., 1st 24 hrs.  
 Fresh water \_\_\_\_\_ feet \_\_\_\_\_ feet  
 Salt water 2222 feet \_\_\_\_\_ feet

Casing and Tubing	Used in Drilling	Left in Well	Packers
Size			Kind of Packer
16			
13			
10	<u>985</u>		Size of
8 1/4	<u>1734</u>	<u>1734</u>	Depth set
6 5/8	<u>1911</u>	<u>1911</u>	
5 3/16	<u>2222</u>	<u>2222</u>	Perf. top <u>2155'</u> at
3			Perf. bottom
2		<u>2180</u>	Perf. top
Liners Used			Perf. bottom

CASING CEMENTED \_\_\_\_\_ SIZE \_\_\_\_\_ No. Ft. \_\_\_\_\_ Date \_\_\_\_\_

COAL WAS ENCOUNTERED AT 752 FEET \_\_\_\_\_ INCHES  
834 FEET \_\_\_\_\_ INCHES FEET \_\_\_\_\_ INCHES  
 \_\_\_\_\_ FEET \_\_\_\_\_ INCHES FEET \_\_\_\_\_ INCHES

Formation	Color	Hard or Soft	Top	Bottom	Oil, Gas or Water	Depth Found	Remarks
Coal	Black	Soft	752	769			
Coal	Black	Soft	834	842			
Sand	Gray	hard	1626				
Sand <u>(89)</u>	gray	Soft	2126	2234	Oil & Salt Water	2222	

SEP 11 1896  
 WEST VIRGINIA  
 DEPARTMENT OF MINES  
 RECEIVED

Formation	Color	Hard or Soft	Top	Bottom	Oil, Gas or Water	Depth Found	Remarks

1318

Date August 30, 194

APPROVED Washington Oil Co., Own

By Willie B. Yost Foreman  
(Title)