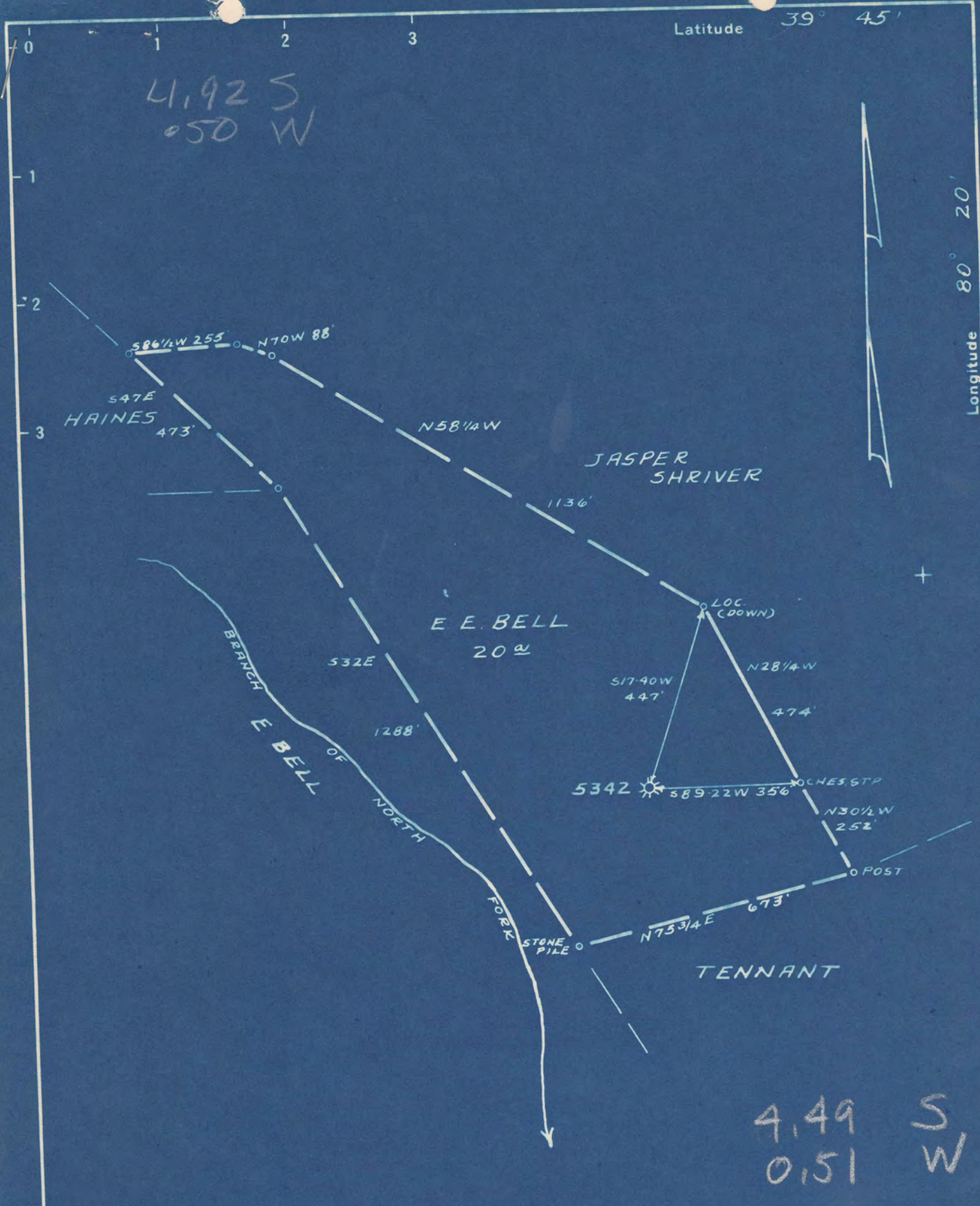


Latitude 39° 45'

Longitude 80° 20'

4,925  
050 W



4,49 S  
0,51 W

- New Location
- Drill Deeper
- Abandonment

Company PITTSBURGH & W.VA. GAS CO.  
 Address CLARKSBURG, W.VA.  
 Farm E. E. BELL  
 Tract \_\_\_\_\_ Acres 20 Lease No. 16737  
 Well (Farm) No. ONE Serial No. 5342  
 Elevation (Spirit Level) 1279 V.A.  
 Quadrangle MANNINGTON N.E. 31-2  
 County MONONGALIA District BATTELLE  
 Engineer Kenneth B. Moore  
Approved by James D. Jeffers  
 Engineer's Registration No. 1084  
 File No. V160 P41 Drawing No. \_\_\_\_\_  
 Date SEPT. 17, 1948 Scale 1" = 300'

STATE OF WEST VIRGINIA  
 DEPARTMENT OF MINES  
 OIL AND GAS DIVISION  
 CHARLESTON

**WELL LOCATION MAP**  
 FILE NO. MON-425-A

- + Denotes location of well on United States Topographic Maps, scale 1 to 62,500, latitude and longitude lines being represented by border lines as shown.
- Denotes one inch spaces on border line of original tracing.

Battle District, Monongalia County, W. Va.  
 By Pittsburgh & W. Va. Gas Co., Clarksburg, W. Va.  
 Abandoned under permit Mon-.....-A?  
 On 20 acres; Mannington N/E 3-1-2.  
 Elevation, 1279' V. A.

Surface and minerals owned by Ernest Bell, R. D. No. 1, Burton, W. Va.  
 Drilling commenced May 29, 1913; completed Aug. 18, 1913.  
 10" casing, 387'; 8", 1586'; 6", 2293'; 5", 2560'; all left in.  
 Coal was encountered at 976-979 and 1074-1083'.  
 Gas well. Abandonment reported to Dept. of Mines Oct. 14, 1948.  
 Record to ROT from Mrs. Griffith April 18, 1949. Old File No. 488.

	Top.	Bottom.
Unrecorded	0	650
Bluff Sand, white, open	650	704
Slate, dark, soft	704	765
Sand, white, medium	765	810
Slate, dark, soft	810	832
Lime shells, white, hard and soft	832	872
Mapletown (Sewickley) <del>Sandy</del> Lime, hard, white	872	976
Mapletown (Sewickley) Coal, black, soft	976	979
Lime, light, hard	979	1070
Slate, dark, soft	1070	1074
Pittsburgh Coal, black, soft	1074	1083
Lime, light, hard	1083	1160
Slate, pink, soft	1160	1192
Sand, light, hard	1192	1257
Red rock, dark, soft	1257	1535
Big Barkard Sand, light, hard	1535	1670
Lime, light, hard	1670	1710
Slate, dark, soft	1710	1712
Lime, dark, hard	1712	1730
Slate and shells, dark, soft and hard	1730	1758
1st alt Sand, gray, hard	1758	1832
Slate, dark, soft	1832	1840
Sand, light, hard	1840	1880
Slate, dark, soft	1880	1885
Sand, gray, hard	1885	1952
Slate and shells, dark, hard and soft	1952	2032
Sand, gray, hard	2032	2117
Lime, light, hard	2117	2147
Slate and shells, dark, soft	2147	2250
Little Lime, light, close, hard	2250	2284
Pencil Cove, dark, soft	2284	2290
Big Lime, light, hard (water, 2325', 1 1/2 blrs.)	2325	2358
Big Injan Sand, dark, close, hard	2358	2535
Unrecorded	2535	2560
Sandy Sand, dark, hard	2560	2682
Lime, dark, hard	2682	2700
Lime shells, dark, hard	2700	2885
Gantz Sand, gray, hard	2885	2910
Lime shells, dark, hard and soft	2910	3009
50-Ft. Sand, dark, hard (gas, 3025-3029')	3009	3042
Slate, dark, soft	3042	3060
Sand, light, soft	3060	3103
Slate, dark, soft	3103	3116
Sand, light, hard, close	3116	3129

H. W. BELL NO. 5342 WELL (Continued).

	Top.	Bottom.
Lime, dark, hard	3129	- 3134
Slate and shells, dark, hard and soft	3134	- 3161
Sand, light, hard	3161	- 3200
Slate and shells, dark, hard and soft	3200	- 3208
Red rock, soft	3208	- 3212
Stray Sand, light, hard	3212	- 3246
Red rock, light, soft	3246	- 3250
Gordon Sand, gray, hard	3250	- 3275
Slate and shells, dark, soft and hard	3275	- 3294
4th Sand, light, hard	3294	- 3307
Slate, light, soft	3307	- 3310
Sand, light, hard	3310	- 3312
Slate and shells, white, soft and hard	3312	- 3342
Sand, light, hard (Gas, 3342-3352')	3342	- 3354
Total depth		3354



STATE OF WEST VIRGINIA  
DEPARTMENT OF MINES  
OIL AND GAS DIVISION

488

WELL RECORD

Permit No. AD 415-A

Oil or Gas Well **"GAS"**  
(KIND)

Company Pittsburgh & West Va Gas Company.  
Clarksburg, West Va.  
 Address E. E. Boll 20  
 Farm Mann. N/E. 3-1-2 Acres  
 Location (waters) 532  
 Well No. Battelle Elev. 1279' VA  
 District Battelle County Monongalia  
 The surface of tract is owned in fee by Ernest Boll  
R.D.#1 Address Burton, W. Va.  
 Mineral rights are owned by Ernest Boll  
R.D.#1 Address Burton, W. Va.  
 Drilling commenced May 29th, 1913  
 Drilling completed August 18, 1913  
 Date Shot From To  
 With

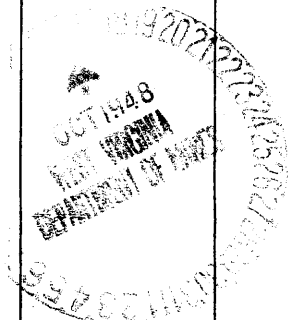
Casing and Tubing	Used in Drilling	Left in Well	Packers
Size			Kind of Packer
16			
13			
10	<u>387'</u>	<u>387'</u>	Size of
8 1/4	<u>1586'</u>	<u>1586'</u>	
6 3/4	<u>2293'</u>	<u>2293'</u>	Depth set
5 3/16	<u>2560'</u>	<u>2560'</u>	
3			Perf. top
2			Perf. bottom
Liners Used			Perf. top
			Perf. bottom

Open Flow /10ths Water in \_\_\_\_\_ Inch  
 /10ths Merc. in \_\_\_\_\_ Inch  
 Volume \_\_\_\_\_ Cu. Ft.  
 Rock Pressure \_\_\_\_\_ lbs. \_\_\_\_\_ hrs.  
 Oil \_\_\_\_\_ bbls., 1st 24 hrs.  
 Fresh water \_\_\_\_\_ feet \_\_\_\_\_ feet  
 Salt water \_\_\_\_\_ feet \_\_\_\_\_ feet

CASING CEMENTED \_\_\_\_\_ SIZE \_\_\_\_\_ No. Ft. \_\_\_\_\_ Date \_\_\_\_\_

COAL WAS ENCOUNTERED AT 476 FEET 36 INCHES  
1074 FEET 108 INCHES FEET INCHES  
 FEET INCHES FEET INCHES

Formation	Color	Hard or Soft	Top	Bottom	Oil, Gas or Water	Depth Found	Remarks
Un-recorded			0	650			
Bluff Sand	White	Open	650	704			
Slate	Dark	Soft	704	765			
Sand	White	Medium	765	810			
Slate	Dark	Soft	810	832			
Lime Shells	White	Hard&Soft	832	872			
Hopetown Sand	Light	Hard	872	976			
M.T. Coal	Black	Soft	976	979			
Lime	Light	Hard	979	1070			
Slate	Dark	Soft	1070	1074			
Pgh. Coal	Black	"	1074	1083			
Lime	Light	Hard	1083	1160			
Slate	Pink	Soft	1160	1192			
Sand	Light	Hard	1192	1257			
Red Rock	Dark	Soft	1257	1585			
Big Bushard	Light	Hard	1585	1670			
Lime	"	"	1670	1710			
Slate	Dark	Soft	1710	1712			
Lime	"	Hard	1712	1730			
Slate&Shells	"	Soft&Hard	1730	1758			
1st. Salt Sand	Gray	Hard	1758	1832			
Slate	Dark	Soft	1832	1840			
Sand	Light	Hard	1840	1880			
Slate	Dark	Soft	1880	1885			
Sand	Gray	Hard	1885	1952			
Slate&Shells	Dark	Hard&Soft	1952	2032			
Sand	Gray	Hard	2032	2117			
Lime	Light	"	2117	2147			
Slate&Shells	Dark	Soft	2147	2250			
Little Lime	Light	Close-Hard	2250	2284			
Pencil Cove	Dark	Soft	2284	2290			
Big Lime	Light	Hard	2290	2358			
Big Injun	Dark	Close-Hard	2358	2535			
Un-recorded			2535	2560			
Squaw Sand	Dark	Hard	2560	2682			
Lime	"	"	2682	2700			
Lime Shells	"	"	2700	2885			
Gants Sand	Gray	"	2885	2910			
Lime Shells	Dark	H.&.Soft	2910	3009			



Ⓞ

Water

2335'

1-1/2 Bailsers Hr.

Formation	Color	Hard or Soft	Top	Bottom	Oil, Gas or Water	Depth Found	Remarks
50 Ft. Sand	Dark	Hard	3009	3042	Gas	3025-3029'	
Slate	"	Soft	3042	3060			
Sand	Light	"	3060	3103			
Slate	Dark	"	3103	3116			
Sand	Light	Hard-Clay	3116	3129			
Lime	Dark	Hard	3129	3134			
Slate&Shells	"	Hard&Soft	3134	3161			
Sand	Light	Hard	3161	3200			
Slate&Shells	Dark	Hard&Soft	3200	3208			
Red Rock		Soft	3208	3212			
Stray Sand	Light	Hard	3212	3246			
Red Rock	"	Soft	3246	3250			
Gordon Sand	Gray	Hard	3250	3275			
Slate&Shells	Dark	Soft-Hard	3275	3294			
4th. Sand	Light	Hard	3294	3307			
Slate	"	Soft	3307	3310			
Sand	"	Hard	3310	3322			
Slate&Shells	White	Soft&Hard	3322	3342	Gas	3342-3352'	
Sand	Light	Hard	3342	3354			
Total depth.....				3354			

October 14th, 1948

Date \_\_\_\_\_, 19

FITTSBURGH & WEST VA GAS COMPANY.

APPROVED \_\_\_\_\_

, Owner

By

*W. M. [Signature]*

(Title)

Record of Well No. 5342

Located on *E. Bell et ux.* Farm *Mar. 26* 1923

*Battelle*

District *Monongalia*

County *W. Va*

State

Division *D*

District No. *11*

Drilled under well Order *1763*

Rig built by *John Craig*

Began *May 12*

1923 Completed *May 18* 1923

Well drilled by *J. Sillett.*

Began *May 29*

1923 Completed *Aug. 18* 1923

Depth of Well *3354* feet

Size of Hole *5 7/16"*

Producing *Gas*

Elev: ~~3354~~ *1279G*

CASED WITH

REMARKS

AMOUNT	SIZE	KIND
<i>16'</i>	<i>13"</i>	<i>Wood</i>
<i>388'</i>	<i>10"</i>	<i>Peld</i>
<i>1586'</i>	<i>8 1/4"</i>	<i>"</i>
<i>2293'</i>	<i>6 5/8"</i>	<i>"</i>
<i>2560'</i>	<i>5 7/8"</i>	<i>"</i>
<i>3354'</i>	<i>2"</i>	<i>"</i>

COAL VEINS *Mapletown-976-977 Pgh 1074-1083.*

FORMATIONS

NAME	TOP	BOTTOM	OIL	GAS	WATER	REMARKS
<i>Bluff sand</i>	<i>660</i>	<i>704</i>			<i>46</i>	<i>Enough to drill with.</i>
<i>Whitey "</i>	<i>755</i>	<i>810</i>				
<i>Murphy "</i>	<i>1192</i>	<i>1259</i>			<i>1075</i>	<i>1/2 Bailers hr.</i>
<i>Big Dunbar</i>	<i>1585</i>	<i>1643</i>				
<i>1st Salt sand</i>	<i>1758</i>	<i>1832</i>				
<i>2nd "</i>	<i>1885</i>	<i>1950</i>				<i>Elevation</i>
<i>3rd "</i>	<i>2032</i>	<i>2117</i>				
<i>Little Lime</i>	<i>2250</i>	<i>2284</i>				
<i>Pencil Cave</i>	<i>2284</i>	<i>2290</i>				
<i>Big Lime</i>	<i>2290</i>	<i>2558</i>				
<i>Big Dunbar</i>	<i>2358</i>	<i>2535</i>			<i>2435</i>	<i>2 1/2 Bailers 2 hr.</i>
<i>Spang sand</i>	<i>2560</i>	<i>2582</i>				
<i>Spang</i>	<i>2882</i>	<i>2910</i>				
<i>Fifty foot</i>	<i>3009</i>	<i>3042</i>		<i>show.</i>		
<i>Thirty "</i>	<i>3050</i>	<i>3102</i>		<i>3025</i>		<i>test nothing in 1"</i>
<i>Sutton string</i>	<i>3115</i>	<i>3129</i>				
<i>Sutton</i>	<i>3161</i>	<i>3200</i>				
<i>Fourth</i>	<i>3212</i>	<i>3246</i>				
<i>Spang sand</i>	<i>3250</i>	<i>3275</i>				
<i>Spang</i>	<i>3294</i>	<i>3322</i>				
<i>Spang</i>	<i>3342</i>			<i>3344-51</i>		<i>1.8 2"</i>
<i>Total Depth</i>		<i>3354</i>				

30 Sec.	10	lbs.
1 Min.	18	"
2 "	28	"
5 "	62	"
10 "	98	"
<del>20</del>	<del>130</del>	<del>"</del>
<del>50</del>	<del>154</del>	<del>"</del>

Rock Pressure 180-24 hrs. in

Taken Aug. 18-1923 19

By

WELL TUBED AND PACKED Aug. 22 1923

VIZ:- 160 lbs. 3354 ft. 2" tubing  
 3 lbs. 37 ft. 2" anchor.  
 1- 7/16 X 2" Packer anchor.  
 1- 2" R. & L. Collar & nipple

FIRST PRESSURE TEST IN 2" TUBING

REMARKS

30 Sec.	40	lbs.
1 Min.	64	"
2 "	86	"
5 "	110	"
10 "	120	"
<del>20</del>	<del>140</del>	<del>"</del>
30 "		"

Rock Pressure 170-12 hrs. in

Taken Aug. 22-1923 19

By

MATERIAL FOR THIS WELL RECEIVED FROM FOLLOWING SOURCES:

Lumber rigizoms and rig timbers (old) from J. W. 5039.  
 1- partial set rig timbers 35.00 O. L. Ekins  
 6841 ft. Lumber New 30.00 Reath. 205.23 A. B. Cunningham