

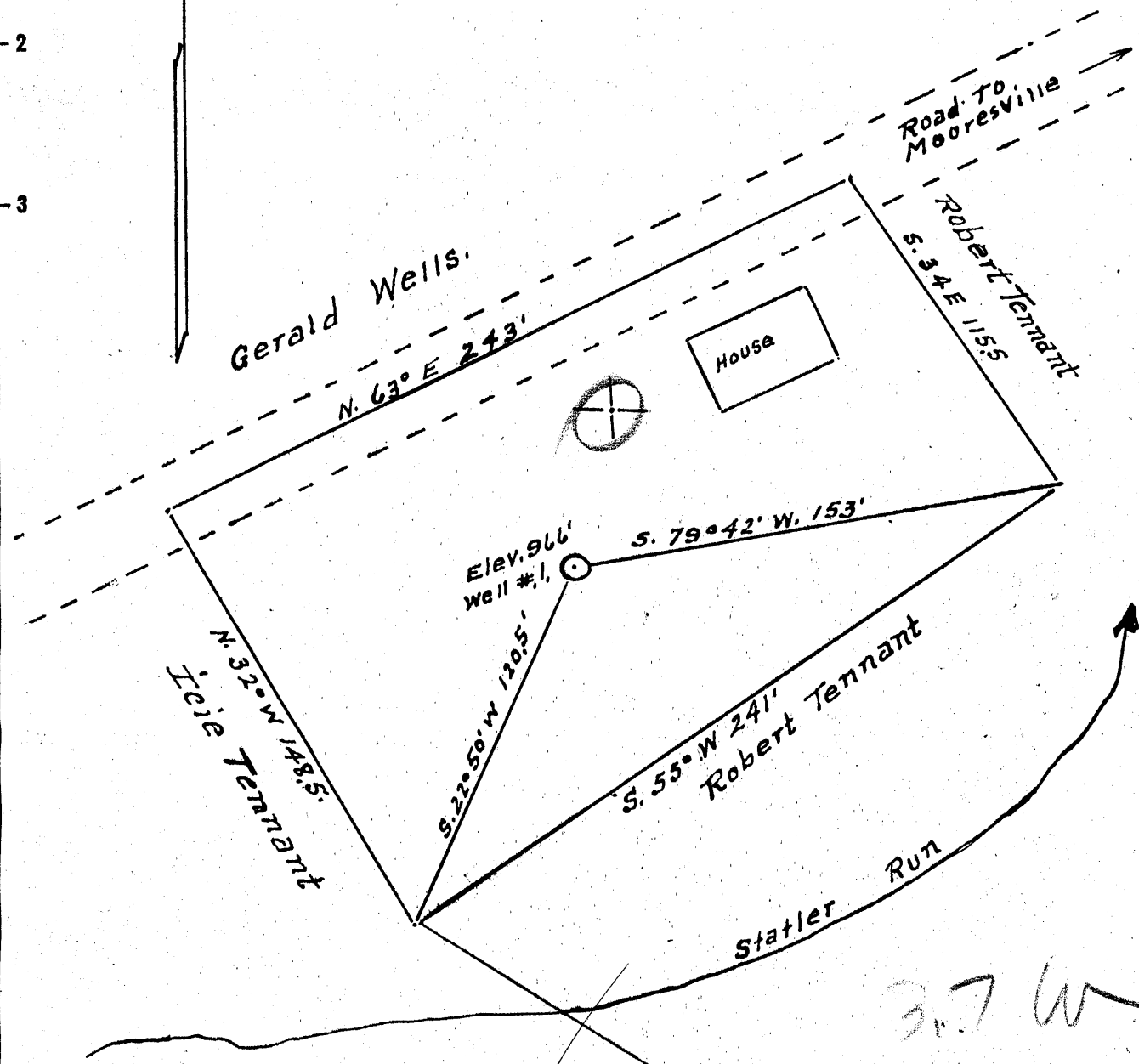
Latitude 39° 45'

Longitude 80° 05'

4.32 S
3.65 W



1
2
3



New Location...
 Drill Deeper.....
 Abandonment.....

surface = W.L. Tennant
 R. #3, Fairview, W. Va.
 Coal = Pch. Consolidation Coal Co.
 Box 337 Purslove, W. Va.
 c/o G. B. Flegal.

OCT 20 1953

Company Dunn-Mar Oil & Gas Co.
 Address Waynesburg Pa
 Farm Catherine Hoskins
 Tract Lot Acres 3/4 Lease No. _____
 Well (Farm) No. 1 Serial No. _____
 Elevation (Spirit Level) 966'
 Quadrangle Blacksville
 County Monongalia District Clay
 Engineer A. L. Headley
 Engineer's Registration No. 2021
 File No. _____ Drawing No. _____
 Date 10-5-1953 Scale 1" = 50'

STATE OF WEST VIRGINIA
 DEPARTMENT OF MINES
 OIL AND GAS DIVISION
 CHARLESTON

WELL LOCATION MAP
 FILE NO. MON-572-A

+ Denotes location of well on United States Topographic Maps, scale 1 to 62,500, latitude and longitude lines being represented by border lines as shown.

- Denotes one inch spaces on border line of original tracing.

CATHERINE HOSKINS (NO. 1) - DUNN-MAR OIL & GAS CO. - MON-572-A



STATE OF WEST VIRGINIA
DEPARTMENT OF MINES
OIL AND GAS DIVISION

WELL RECORD

613

Permit No. 5700A

Oil or Gas Well _____ (KIND)

Company Dunn-Car Oil & Gas Co.
Address Mail to Mr. H.E. Alker
433 Bridge St. Waynesburg, Pa.
Farm G. Hoskins Acres 3/4
Location (waters) _____
Well No. One Elev. 766
District Cley County Monongalia
The surface of tract is owned in fee by _____
Address _____
Mineral rights are owned by _____
Address _____

Casing and Tubing	Used in Drilling	Left in Well	Packers
Size			Kind of Packer
16			
13			
10			Size of
8 1/4			
6 3/8		1738	Depth set
5 3/16		1780	
3			Perf. top
2		1879	Perf. bottom
Liners Used			Perf. top
			Perf. bottom

Drilling commenced _____
Drilling completed April 5, 1915
Date Shot _____ From _____ To _____
With _____
Open Flow _____ /10ths Water in _____ Inch
_____ /10ths Merc. in _____ Inch
Volume _____ Cu. Ft.
Rock Pressure _____ lbs. _____ hrs.
Oil _____ bbls., 1st 24 hrs.
Fresh water _____ feet _____ feet
Salt water _____ feet _____ feet

CASING CEMENTED _____ SIZE _____ No. Ft. _____ Date _____

COAL WAS ENCOUNTERED AT 400 FEET 48 INCHES
477 FEET 108 INCHES FEET INCHES
FEET INCHES FEET INCHES

Formation	Color	Hard or Soft	Top	Bottom	Oil, Gas or Water	Depth Found	Remarks
Mapletown Coal			400	404			
Pgh. Coal			477	486			
Murphy Sand.			675	700			
Lt. Dunkard.			870	900			
Big. "			982	1042			
Gas Sand			1190	1230			
Salt "			1275	1520			
Maxon			1608	1631			
Lt. Lime			1693	1711			
Big. Lime			1715	1780			
" Injun			1780	1945			
Total Depth.				1979			



JAN 12 1954

(Over) JAN 2 REC'D

WELL RECORD 61-30572

JOS. H. McDERMOTT

COMPANY

Record of Well No. L on H. A. Hoskins Farm _____ Acres _____
 Field _____ District _____ County _____ State _____
 Rig Commenced Jan. 19, 1915 19 - Completed April 5, 1915 19
 Drilling Commenced 19 Completed 19
 Cost Per Foot _____ Contractor _____ Address _____
 Drillers Names _____

CONDUCTOR AND CASING USED IN DRILLING

Conductor 13 inch 10 inch 8 1-4 inch 6 5-8 inch 5 3-16 inch 4 inch 3 inch 2 inch
10 1738 1780

CONDUCTOR AND CASING LEFT IN WELL

Conductor 13 inch 10 inch 8 3-4 inch 6 5-8 inch 5 3-16 inch 4 inch 3 inch 2 inch

Formation	Top	Bottom	Thickness	Formation	Top	Bottom	Thickness
GRAVEL OR QUICK SAND FIRST WATER BLUFF SAND				6 5/4 Gas'g	1738		
NATIVE COAL				Big Injun Sd.	1780	1945	165
WBG. COAL				Gas 20/10 in 1 inch water tests	1787		
MAPEL COAL	400	404	4	3 1/2 Barrel water	1879		
PGH. COAL	477	486	9	Slate & Shells	1945	2030	85
MURPHY SAND	675	700	25	5 3/16 Casing	2030		
10 Casing Pulled		498		Sand	2030	2060	30
LITTLE DKRD.	870	900	30	FIFTY FOOT Sand	2352	2482	130
BIG DKRD.	982	1042	60	Break	2482	2497	15
8 1/4 Casing Pulled		1170		THIRTY FOOT " Brkn	2497	2537	40
Top GAS SAND	1190	1230	40	Red Rock	2537	2600	63
1 Gas 26/10 in 1 inch	1198			GORDON STRAY	2600	2635	35
2 " FIRST SALT SAND in 2 inch	1208			Shells	2635	2677	42
3 " 48/10 in 2 inch	1218			GORDON Sand	2677	2702	25
Top SECOND SALT SAND	1275	1375	100	Broken up	2702	2735	33
Break	1375	1380	5	FOURTH Sand	2735	2760	25
Second Salt Sd.	1380	1410	30	Break	2760	2772	12
Break LITTLE LIME	1410	1430	20	FIFTH Sand	2772	2782	10
Third Salt Sand	1430	1520	90	Slate & Shells	2782	2896	114
Hole full water	1473			Sand Hard	2896	2901	5
Mason Sand	1608	1631	23	Gas 14/10 in 2 inch	2898		
BIG INJUN				Gas 14/10 in 5 3/16 inch	2923		
Red Rock	1631	1655	24	Bottom Hole	2934 1/2		
Slate & Shells	1655	1693	38	Bayard Sand	2896	2925	29
Little Lime	1693	1711	18	Well plugged up to Big Injun			
Pencil Cav.	1711	1715	4	ELIZABETH			
Big Lime Broken	1715	1780	65	TOTAL DEPTH			

Gas Test Open

Minute Test

Oil Production

Well Tubed with _____

Tubing Packer Set in _____ Ft. working bbl.

Sand, Top of Packer, Anchor, Perforation at, _____

Perforation Air Hole

SHOT RECORD

Date	Amount	Size of Shell	Top	Bottom	Oil on Shot	Results

REMARKS: tubed with National Steel 4 1/2 #2" tubing full measure 2956.
 Packer in 4th sand 190 ft. off bottom 6" ripple below
 Packer-Packer 3-6"-2. Bottom joints Perforated with Punch. tubed April 6th