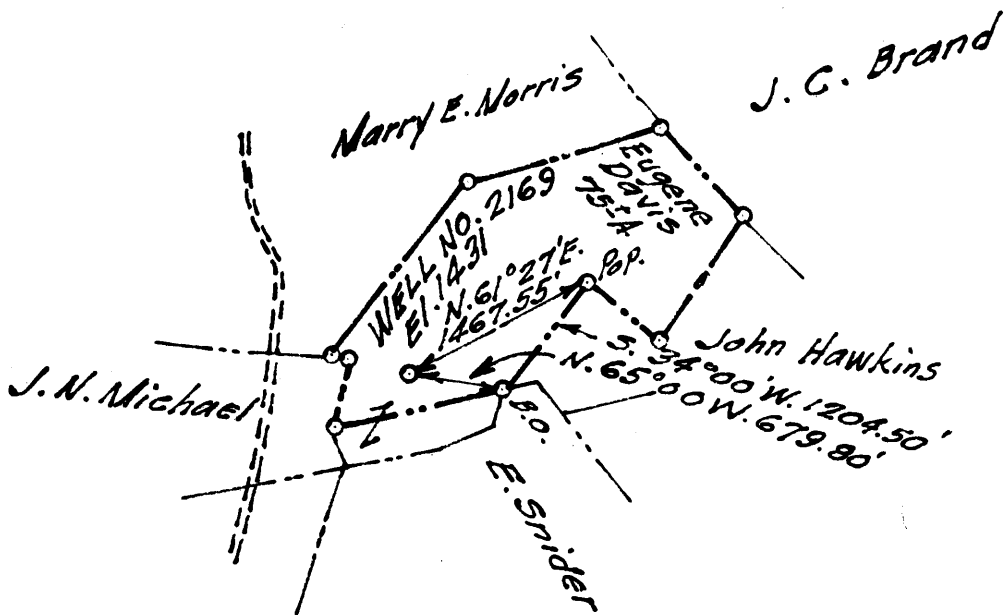


Latitude 31° 40'

2.00 S
.70 W

Longitude 80° 05'



New Location
 Drill Deeper
 Abandonment

DEC 1 1958

0.7 W
2.04 S

Company A.M. Snider
 Address 60 Sunset Dr., Fairmont, W. Va.
 Farm Eugene Davis
 Tract _____ Acres 75 Lease No. _____
 Well (Farm) No. 2169 Serial No. _____
 Elevation (Spirit Level) El. 1431
 Quadrangle Blacksville
 County Monongalia District Grant
 Engineer Wm. H. Helgman
 Engineer's Registration No. 1868
 File No. A.M.S. Drawing No. _____
 Date Sept. 23, 1958 Scale 1"=800'

STATE OF WEST VIRGINIA
 DEPARTMENT OF MINES
 OIL AND GAS DIVISION
 CHARLESTON

WELL LOCATION MAP
 FILE NO. MON-622-A

+ Denotes location of Well on United States Topographic Maps, Scale 1 to 62,500, latitude and longitude lines being represented by border lines as shown.

- Denotes One inch spaces on border line of original tracing.