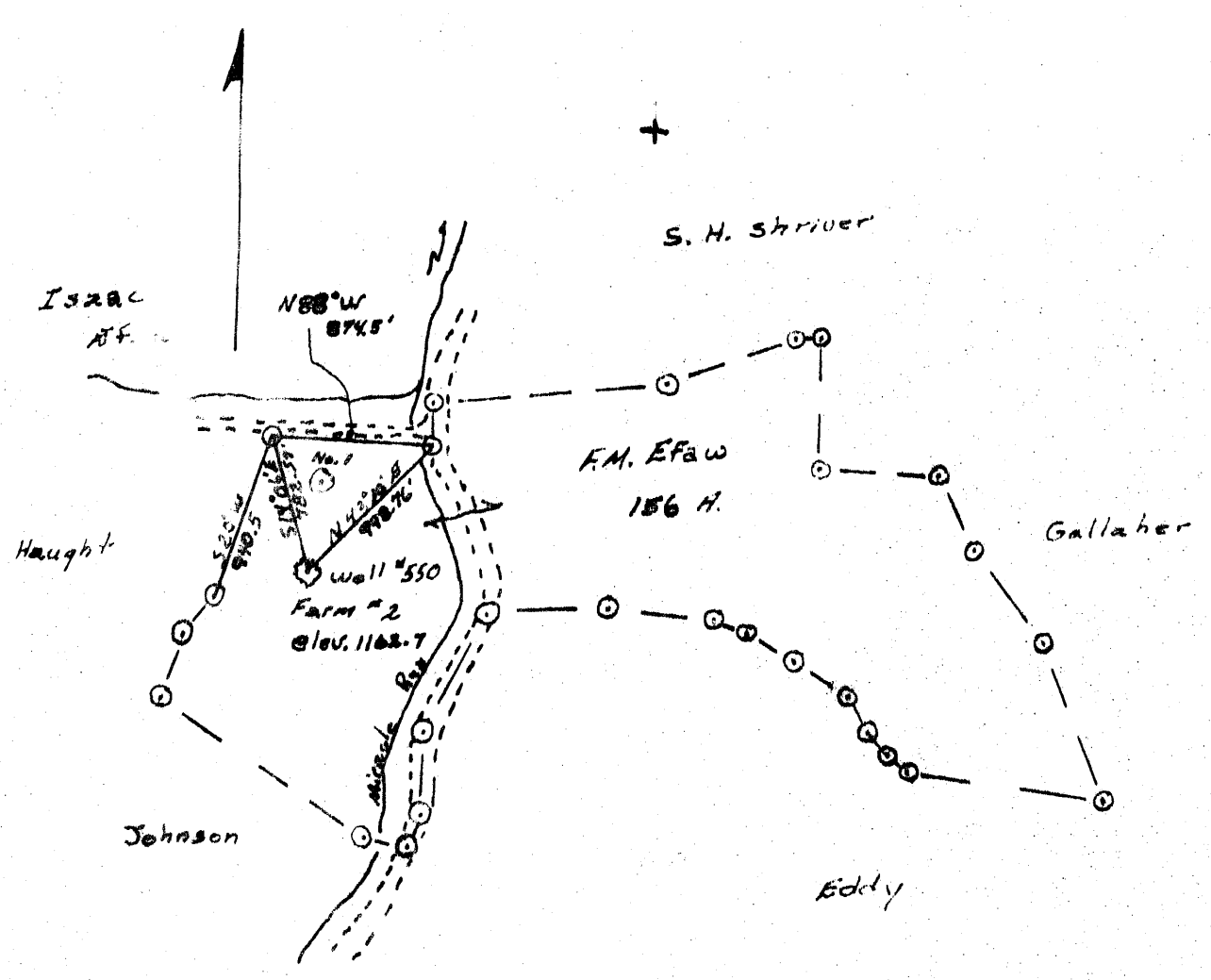


814117

LATITUDE 39° 40'

2.36 S  
3.58 W

LONGITUDE 80° 15'



Minimum Error of Closure is Less than 1 in 2000

Source of Elevation State Road B.M. Elev. 1104.37

I, the undersigned, hereby certify that this map is correct to the best of my knowledge and belief and shows all the information required by paragraph 6 of the rules and regulations of the oil and gas section of the mining laws of West Virginia.

New Location.....

Drill Deeper.....

Abandonment.....

Signed: William P. Foley

Company Herchel E. Walker

Address Wagnerburg Pa.

Farm F.M. Efav

Traot Acres 157 Lease No. 3146

Well (Farm) No. 2 Serial No. \_\_\_\_\_

Elevation (Spirit Level) 1162.7

Quadrangle Manington EC

County Marion District Battle

Engineer William P. Foley

Engineer's Registration No. 4449

File No. \_\_\_\_\_ Drawing No. \_\_\_\_\_

Date 7-20-64 Scale 1"=100'

STATE OF WEST VIRGINIA  
DEPARTMENT OF MINES  
OIL AND GAS DIVISION  
CHARLESTON

WELL LOCATION MAP  
FILE NO. MON-674-A

+ Denotes location of well on United States Topographic Maps, scale 1 to 62,500, latitude and longitude lines being represented by border lines as shown.

- Denotes one inch spaces on border line of original tracing.