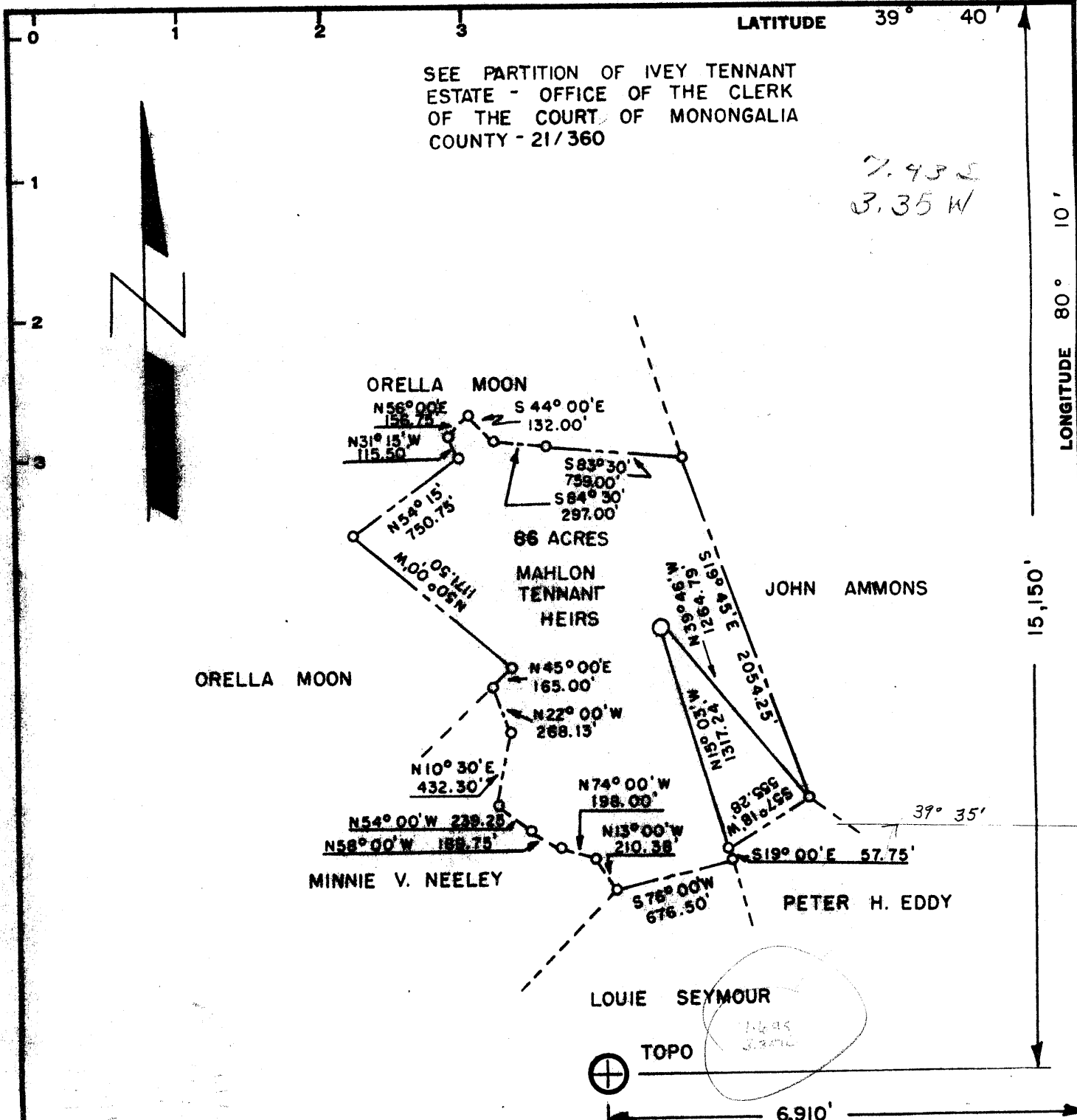


SEE PARTITION OF IVEY TENNANT  
ESTATE - OFFICE OF THE CLERK  
OF THE COURT OF MONONGALIA  
COUNTY - 21/360

7.432  
3.35 W



Minimum Error of Closure 1" = 200'

Source of Elevation UNITED STATES GOVERNMENT BENCHMARK  
ELEV. = 1706

I, the undersigned, hereby certify that this map is correct to the best of my knowledge and belief and shows all the information required by paragraph 6 of the rules and regulations of the oil and gas section of the mining laws of West Virginia.

- Fracture
- New Location
- Drill Deeper
- Abandonment

Signed: Stanley A. Harper  
Squares: S E W  
N 19,476.81 W 8,951.32

Map No. 10-4-74  
E.A.C.C. NO. 523

Company EASTERN ASSOCIATED COAL CORP.  
Address GRANTTOWN, W. VA. 26574  
Farm MAHLON TENNANT HEIRS  
Tract        Acres 86 Lease No.         
Well (Farm) No. 5 Serial No.         
Elevation (Spirit Level) 1168'  
Quadrangle BLACKSVILLE WC  
County MONONGALIA District CLAY  
Engineer STANLEY A. HARPER  
LICENSED LAND SURVEYOR NO. 360  
File No.        Drawing No. E.W.P. - 5  
Date 10-21-74 Scale 1" = 800'

STATE OF WEST VIRGINIA  
DEPARTMENT OF MINES  
OIL AND GAS DIVISION  
CHARLESTON

WELL LOCATION MAP

FILE NO. MON-696-A

+ Denotes location of well on United States Topographic Maps, scale 1 to 24,000 latitude and longitude lines being represented by border lines as shown.

- Denotes one inch spaces on border line of original tracing.

47 061