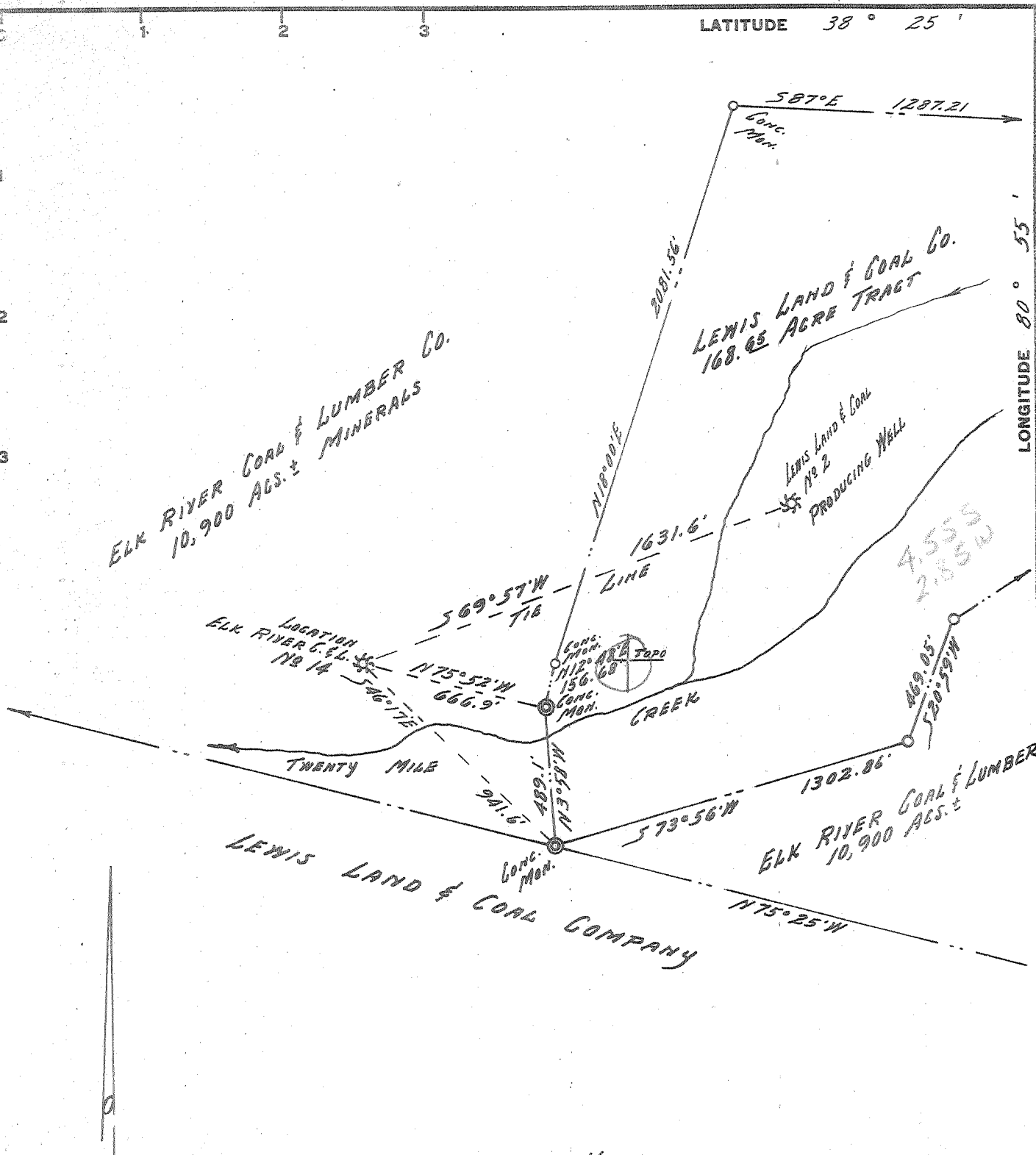


LATITUDE 38° 25'

LONGITUDE 80° 55'



Minimum Error of Closure 1/2,000

Source of Elevation NO 2 WELL ON LEWIS LAND & COAL CO.

ELEVATION 1300

I, the undersigned, hereby certify that this map is correct to the best of my knowledge and belief and shows all the information required by paragraph 6 of the rules and regulations of the oil and gas section of the mining laws of West Virginia.

- Fracture.....
- New Location.....
- Drill Deeper.....
- Abandonment.....

Signed: Paul H. Dean

Map No.                      Squares:    N            S            E            W

Company MICOA, INC.  
 Address 211 WATER STREET, WESTON, W.VA. 26452  
 Farm ELK RIVER COAL & LUMBER CO.  
 Tract ONE Acres 10,900 Lease No. \_\_\_\_\_  
 Well (Farm) No. 14 Serial No. \_\_\_\_\_  
 Elevation (Spirit Level) 1325  
 Quadrangle SUMMERSVILLE WC  
 County NICHOLAS District GRANT  
 Engineer PAUL G. DEAN  
 Engineer's Registration No. 1856  
 File No. 136-8-55 Drawing No. 67-34  
 Date APRIL 25, 1967 Scale 1" = 500'

STATE OF WEST VIRGINIA  
 DEPARTMENT OF MINES  
 OIL AND GAS DIVISION  
 CHARLESTON

**WELL LOCATION MAP**

FILE NO. Nic-265

+ Denotes location of well on United States Topographic Maps, scale 1 to 62,500, latitude and longitude lines being represented by border lines as shown.

- Denotes one inch spaces on border line of original tracing.



STATE OF WEST VIRGINIA  
DEPARTMENT OF MINES  
OIL AND GAS DIVISION

Rotary   
Spudder   
Cable Tools   
Storage   
Oil or Gas Well Gas  
(KIND)

Quadrangle Summersville

WELL RECORD

Permit No. NIG 265

Company Micos, Inc.  
Address Box 105 Weston, W. Va.  
Farm Elk River Coal & Lumber Co. Acres 10,900  
Location (waters) Twenty Mile Creek  
Well No. 14 Elev. 1325  
District Grant County Nicholas  
The surface of tract is owned in fee by Elk River Coal & Lumber Co. Address Widen, W. Va.  
Mineral rights are owned by Same  
Address \_\_\_\_\_

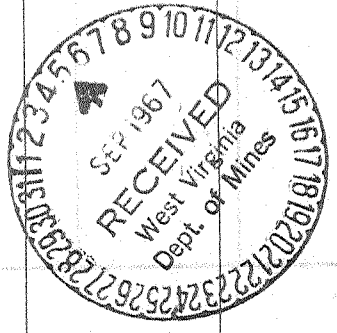
| Casing and Tubing | Used in Drilling | Left in Well | Packers                |
|-------------------|------------------|--------------|------------------------|
| Size              |                  |              | Kind of Packer         |
| 16                |                  |              |                        |
| 13                | 133'             | 133'         | 4 1/2" X 8" Hook Wall  |
| 10                | 601'             | Pulled       | Size of _____          |
| 8 3/4             | 1425'            | Pulled       |                        |
| 6 5/8             |                  |              | Depth set <u>1552'</u> |
| 5 3/16            |                  |              |                        |
| 3 4 1/2"          | 1552'            | 1552'        | Perf. top _____        |
| 2                 |                  |              | Perf. bottom _____     |
| Liners Used       |                  |              | Perf. top _____        |
| 7"                | 123' Set @ 1779' |              | Perf. bottom _____     |

Drilling commenced June 6, 1967  
Drilling completed July 27, 1967  
Date Shot \_\_\_\_\_ From \_\_\_\_\_ To \_\_\_\_\_  
With \_\_\_\_\_  
Open Flow \_\_\_\_\_ /10ths Water in \_\_\_\_\_ Inch  
\_\_\_\_\_ /10ths Merc. in \_\_\_\_\_ Inch  
Volume 231,000 Blue Monkey Cu. Ft.  
Rock Pressure 95 lbs. 24 hrs.  
Oil \_\_\_\_\_ bbls., 1st 24 hrs.  
WELL ACIDIZED No  
WELL FRACTURED No

| CASING CEMENTED                    | SIZE | No. Ft. | Date   |
|------------------------------------|------|---------|--------|
|                                    |      |         |        |
| COAL WAS ENCOUNTERED A <u>None</u> |      | FEET    | INCHES |
|                                    | FEET | INCHES  | FEET   |
|                                    | FEET | INCHES  | FEET   |

RESULT AFTER TREATMENT \_\_\_\_\_  
ROCK PRESSURE AFTER TREATMENT \_\_\_\_\_  
Fresh Water \_\_\_\_\_ Feet Salt Water \_\_\_\_\_ Feet

| Formation      | Color | Hard or Soft | Top | Bottom | Oil, Gas or Water | Depth    | Remarks |
|----------------|-------|--------------|-----|--------|-------------------|----------|---------|
| Sand           |       |              | 0   | 14     |                   |          |         |
| Gravel         |       |              | 14  | 25     | Water             | 23'      |         |
| Slate          |       |              | 25  | 94     |                   |          |         |
| Lime & Sand    |       |              | 94  | 112    |                   |          |         |
| Sand           |       |              | 112 | 128    | Water             | 94' 128' |         |
| Slate          |       |              | 128 | 248    |                   |          |         |
| Sandy Slate    |       |              | 248 | 279    |                   |          |         |
| Slate          |       |              | 279 | 307    |                   |          |         |
| Slate & Lime   |       |              | 307 | 319    |                   |          |         |
| Sandy Slate    |       |              | 319 | 371    |                   |          |         |
| Sand           |       |              | 371 | 386    |                   |          |         |
| Sandy Slte     |       |              | 386 | 395    |                   |          |         |
| Sand           |       |              | 395 | 400    |                   |          |         |
| Slate          |       |              | 400 | 405    |                   |          |         |
| Sand           |       |              | 405 | 518    |                   |          |         |
| Slate          |       |              | 518 | 526    |                   |          |         |
| Sand           |       |              | 526 | 537    |                   |          |         |
| Sandy Slate    |       |              | 537 | 563    |                   |          |         |
| Sand           |       |              | 563 | 597    |                   |          |         |
| Slate          |       |              | 597 | 607    |                   |          |         |
| Sand           |       |              | 607 | 654    |                   |          |         |
| Slate & Shells |       |              | 654 | 713    |                   |          |         |
| Sand           |       |              | 713 | 782    |                   |          |         |
| Sandy Slte     |       |              | 782 | 823    |                   |          |         |
| Sand           |       |              | 823 | 836    |                   |          |         |
| Sandy Slate    |       |              | 836 | 870    |                   |          |         |
| Sand           |       |              | 870 | 895    |                   |          |         |
| Sandy Slate    |       |              | 895 | 921    |                   |          |         |
| Sand           |       |              | 921 | 928    |                   |          |         |



(over)

| Formation                    | Color | Hard or Soft | Top  | Bottom | Oil, Gas or Water | Depth Found | Remarks |
|------------------------------|-------|--------------|------|--------|-------------------|-------------|---------|
| Sandy Slate                  |       |              | 928  | 974    |                   |             |         |
| Sand                         |       |              | 974  | 985    |                   |             |         |
| Slate & Shells               |       |              | 985  | 1078   |                   |             |         |
| Sand                         |       |              | 1078 | 1128   |                   |             |         |
| Sandy Slate                  |       |              | 1128 | 1140   |                   |             |         |
| Sand                         |       |              | 1140 | 1186   |                   |             |         |
| Slate                        |       |              | 1186 | 1327   | Gas               | 1153'       |         |
| Sand                         |       |              | 1327 | 1417   |                   |             |         |
| Red Rock                     |       |              | 1417 | 1419   | Water             | 1388'       |         |
| Sandy Lime                   |       |              | 1419 | 1427   |                   |             |         |
| Red Rock & Lime              |       |              | 1427 | 1461   |                   |             |         |
| Red Rock                     |       |              | 1461 | 1520   |                   |             |         |
| Red Rock & Sand              |       |              | 1520 | 1525   |                   |             |         |
| Sand (Maxton)                |       |              | 1525 | 1614   | Gas               | 1552'       |         |
| Red Rock & Slate             |       |              | 1614 | 1623   |                   |             |         |
| Sandy Slate                  |       |              | 1623 | 1635   |                   |             |         |
| Red Rock                     |       |              | 1635 | 1644   |                   |             |         |
| Shale                        |       |              | 1644 | 1670   |                   |             |         |
| Lime (Little Lime)           |       |              | 1670 | 1715   |                   |             |         |
| Sand & Lime                  |       |              | 1715 | 1725   |                   |             |         |
| Slate                        |       |              | 1725 | 1739   |                   |             |         |
| Sand (Blue Monday)           |       |              | 1739 | 1753   | Gas               | 1744'       |         |
| Lime & Sandy Lime (Big Lime) |       |              | 1753 | 1984   |                   |             |         |
| Sand                         |       |              | 1984 | 2006   |                   |             |         |
|                              |       |              | TD   | 2006   |                   |             |         |

July 27, 1967

Well was logged by Allegheny Nuclear Surveys, Inc.  
Gamma Neutron Density Caliper Temp.

July 29, 1967

4 1/2" casing was run with hookwall packer and set @ 1552' and 5 sks gel was dumped on top of the packer. The well is to be produced natural.

Date Aug 31, 1967

APPROVED Micos, Inc., Owner

By Jerry Mamer (Title)