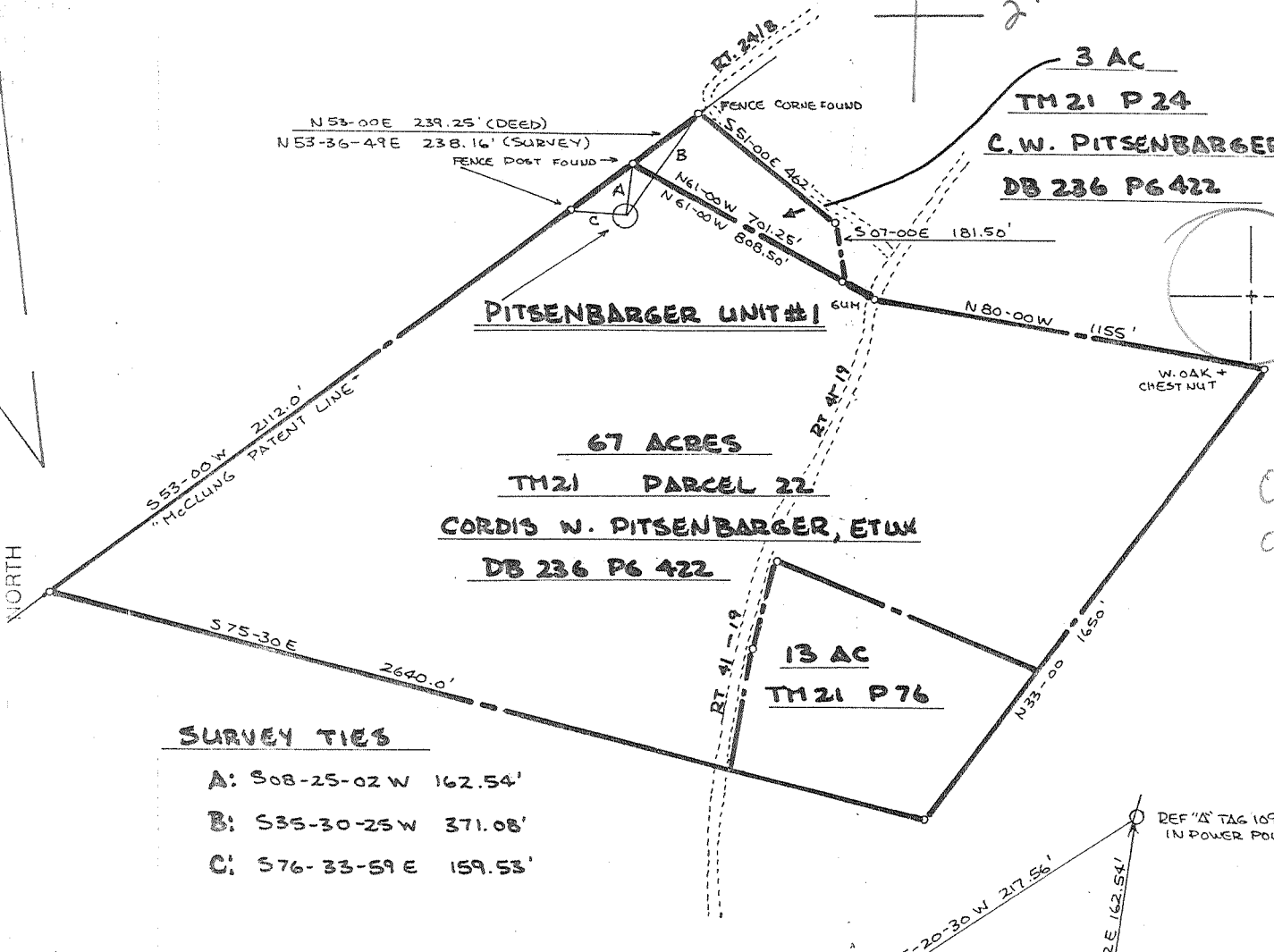


8/10/87

0.975
2.49W

80° 52' 30"
5180'



SURVEY TIES

- A: S08-25-02 W 162.54'
- B: S35-30-25 W 371.08'
- C: S76-33-59 E 159.53'

NOTES:

- WELL IS PART OF 640 ACRE UNIT, WELL IS LOCATED GREATER THAN 500' FROM ANY UNIT LINE.
- NO DEEP WELLS WITHIN 3000' OF LOCATION

REF "B" TAG 110/NAIL IN POWER POLE

REF "A" TAG 109/NAIL IN POWER POLE

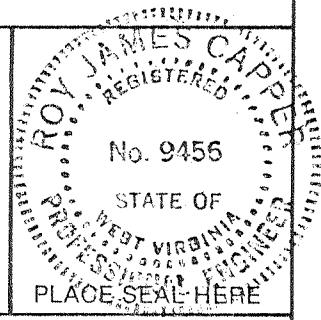
REFERENCES

1" = 100'

(+) DENOTES LOCATION OF WELL ON UNITED STATES TOPOGRAPHIC MAPS

FILE NO. RA-067-001
 DRAWING NO. _____
 SCALE 1" = 500'
 MINIMUM DEGREE OF ACCURACY 1 IN 5000
 PROVEN SOURCE OF ELEVATION BM ±2800'
 SOUTH OF LOCATION ELEVATION -2051

I THE UNDERSIGNED, HEREBY CERTIFY THAT THIS PLAT IS CORRECT TO THE BEST OF MY KNOWLEDGE AND BELIEF AND SHOWS ALL THE INFORMATION REQUIRED BY LAW AND THE REGULATIONS ISSUED AND PRESCRIBED BY THE DEPARTMENT OF ENERGY.
 (SIGNED) Roy James Cappe
 R.P.E. 9456 L.L.S. _____



STATE OF WEST VIRGINIA
 DEPARTMENT OF ENERGY
 OIL AND GAS DIVISION



DATE 4 AUGUST, 19 87
 OPERATOR'S WELL NO. PITZENBARGER
 API WELL NO. #1

WELL TYPE: OIL GAS LIQUID INJECTION WASTE DISPOSAL
 (IF "GAS,") PRODUCTION STORAGE DEEP SHALLOW
 LOCATION: ELEVATION 2085 WATER SHED UNAMED BRANCH OF MEADOW RIVER
 DISTRICT WILDERNESS 7 COUNTY NICHOLAS
 QUADRANGLE SUMMERSVILLE DAM 7.5' b26 140 5 Winona C
 SURFACE OWNER CORDIS W. PITZENBARGER, ETUX ACREAGE 67
 OIL & GAS ROYALTY OWNER SAME LEASE ACREAGE 502.57
 LEASE NO. W-1775

PROPOSED WORK: DRILL CONVERT DRILL DEEPER REDRILL FRACTURE OR STIMULATE PLUG OFF OLD FORMATION PERFORATE NEW FORMATION OTHER PHYSICAL CHANGE IN WELL (SPECIFY) _____

PLUG AND ABANDON CLEAN OUT AND REPLUG
 TARGET FORMATION TUSCARORA ESTIMATED DEPTH 8800'
 WELL OPERATOR RANCO OIL AND GAS DESIGNATED AGENT ROBERT A. WILKINSON 1987
 ADDRESS POST OFFICE BOX 99 ADDRESS 43 MEADOWCREST DRIVE
BELPRE, OHIO 45714 PARKERSBURG, W.VA. 26101

DEEP WELL 1-1 unnamed (o)

COUNTY NAME PERMIT

WE 35
RECEIVED
OCT 13 1988

28-Apr-88
API # 47- 67-00651

State of West Virginia
DEPARTMENT OF ENERGY
Division of Oil and Gas

DIVISION OF OIL & GAS
DEPARTMENT OF ENERGY

Well Operator's Report of Well Work

Farm name: PITSENBARGER, C. W. Operator Well No.: PITSENBARGER 1

LOCATION: Elevation: 2051.00 Quadrangle: SUMMERSVILLE DAM

District: WILDERNESS County: NICHOLAS
Latitude: 5180 Feet South of 38 Deg. 10Min. 0 Sec.
Longitude 1110 Feet West of 80 Deg. 52 Min. 30 Sec.

Company: RAMCO OIL & GAS CORP.
P.O. BOX 2347
HOLLYWOOD, FL

Agent: ROBERT A. WILLIAMSON

Inspector: RODNEY G. DILLON
Permit Issued: 08/06/87
Well work Commenced: 09/21/87
Well work Completed: 10/30/87
Verbal Plugging _____
Permission granted on: _____
Rotary x Cable _____ Rig _____
Total Depth (feet) 8565'
Fresh water depths (ft) 104'=1/2" Str.
Damp @ 83'
Salt water depths (ft) 698'

Is coal being mined in area (Y/N)? N
Coal Depths (ft): None

Casing & Tubing Size	Used in Drilling	Left in Well	Cement Fill Up Cu. Ft.
20"	10'	10'	8 sks
13-3/8"	300'	300'	220 sks
9-5/8"	3600'	3600'	950 sks
2-3/8"	-----	2361'	-----

OPEN FLOW DATA

Producing formation Big Lime Pay zone depth (ft) 2339'-2370'
Gas: Initial open flow Show MCF/d Oil: Initial open flow --- Bbl/d
Final open flow (33) MCF/d Final open flow --- Bbl/d
Time of open flow between initial and final tests 6 Hours
Static rock Pressure 150 psig (surface pressure) after 24 Hours

93 MCF
FDF
for
well

Second producing formation Big Injun Pay zone depth (ft) 2450'-2464'
Gas: Initial open flow Show MCF/d Oil: Initial open flow --- Bbl/d
Final open flow (60) MCF/d Final open flow --- Bbl/d
Time of open flow between initial and final tests 6 Hours
Static rock Pressure 640 psig (surface pressure) after 96 Hours

NOTE: ON BACK OF THIS FORM PUT THE FOLLOWING: 1). DETAILS OF PERFORATED INTERVALS, FRACTURING OR STIMULATING, PHYSICAL CHANGE, ETC. 2). THE WELL LOG WHICH IS A SYSTEMATIC DETAILED GEOLOGICAL RECORD OF ALL FORMATIONS, INCLUDING COAL ENCOUNTERED BY THE WELLBORE.

Robert A. Williamson
For: RAMCO OIL & GAS CORP. OCT 17 1988

By: Robert A. Williamson - VP/Exploration
Date: September 28, 1988

See attachment (Engineer Report).

64

FORMATION	TOP	BOTTOM	SHOWS
ELECTRIC LOG			
All depths are from KB = 2093			
Homewood Sandstone (very hard)	0	370	Damp @ 83' 1/2" Stream FW @ 104' 1" Stream SW @ 698'
Sand & Shale	370	585	
Salt Sands	585	892	
Lower Penn Sand & Shale	892	1110?	
Mauch Chunk-Princeton SS	1166	1186	
Avis Limestone	1298	1324	
1st & 2nd Maxton SS	1324	1900	
3rd Maxton SS & Shale	1900	1966	Wet @ 1925' on log
Little Lime	1966	2060	
Pencil Cave	2060	2106	Went to mud system thru Pencil Cave to TD @ 3650' for 9-5/8" csg
Big Lime	2106	2444	Show of gas @ 2360', OF not gaugable due to mud system
Big Injun (Pocono)	2444	2468	Show of gas @ 2460', OF not gaugable due to mud system
Pocono Shale	2468	2600	
Weir SS	2600	2636	
Sunbury Sh	3252	3260	
Berea Horizon	3260	3274	
Devonian Shale	3274	6891	Show of gas @ 6465', TSTM
Marcellus Shale	6891	6936	
Onandoga LS	6936	7024	
Oriskany SS	7024	7057	
Helderburg LS	7057	7140	
Upper Silurian (Tonoloway LS & Wills Crk LS)	7140	7914	
Williamsport SS	7914	7956	Show of gas
McKensie LS	7956	8203	
Keefer SS (poorly developed)	8203	8222	
Rose Hill Sh	8222	8496	
Tuscarora SS	8496	8565	Wet
Rig TD	8565		

RECEIVED
OCT 13 1988

DIVISION OF OIL & GAS
DEPARTMENT OF ENERGY

787

PITSENBARGER #1

COMPLETION REPORT

12/01/87 Plug back per Inspector.
 1st plug: 8003' - 7850'
 2nd plug: 7161' - 7000'
 3rd plug: 6944' - 6740'

12/04/87 Ran 6593' of 4-1/2" - cement with 100 sacks Class "A" (calc. fillup = 476').

12/07/87 Perf 13 holes in Lower Devonian Shale from 6455' to 6524'.

12/08/87 Straight N2 frac job: Pumped total 525 mscf of N2 with 6 bbl of 15% HCl ahead. Midway thru job, misted 4 balls in 3 bbls additional acid. Blew back thru 1/8" choke.

12/16/87 Best obtainable pressure = 100 psi with less than 33 mcf O.F. Squeezed cement into perfs and set cement plug from 6570' to 6450' per Inspector. Shot pipe at 6028'. Set 2nd plug from 6028' to 5888'. Set top plug from 3700' to 3450' (inside 9-5/8" at 3600').

01/09/88 Perf Big Injun from 2450' to 2464' with 10 holes. Set CIBP at 2500'.

01/11/88 Water-Sand Frac with 200 sacks and 313 bbl fluid. ATP = 1058 psi, ISIP = 631 psi, 5 min = 121 psi, 15 min = 68 psi, Av Rate = 22.8 BPM, Av HHP = 591 HHP

01/19/88 640 psi rock pressure; OF = 60 mcf after 6 hours

01/27/88 Perforate oolitic porosity zone in the Big Lime from 2339' to 2370' with 8 holes. Load hole with 4000 gal 28% HCl, finish loading with H2O. Stage break down and flush to perfs. Broke at 900 psi, ATP = 975#. ISIP = 500 psi, 5 min = 400 psi, 10 min = 375 psi, 15 min = 300 psi. RP = 150 psi after 24 hrs, OF = appx 33 mcf.

01/29/88 Ran 2-3/8" tubing to 2361' with 2' perf nipple and seating collar.

RECEIVED
 OCT 13 1988

OCT 17 1988

DIVISION OF OIL & GAS
 DEPARTMENT OF ENERGY

FORM WV-2 (B) FILE COPY
 RECEIVED
 AUG 06 1987



1) Date: August 6, 19 87
 2) Operator's Well No. C.W. Pitsenbarger Unit # 1
 3) API Well No. 47 067 0651
 State County Permit

STATE OF WEST VIRGINIA
 DEPARTMENT OF ENERGY, OIL AND GAS DIVISION
 APPLICATION FOR A WELL WORK PERMIT

- 4) WELL TYPE: A Oil / Gas /
 B (If "Gas", Production / Underground storage / Deep / Shallow)
 5) LOCATION: Elevation: 2051 Watershed: Unamed Branch of Meadow River
 District: Wilderness 7 County: Nicholas 067 Quadrangle: Summersville Dam 7.5
 6) WELL OPERATOR Ramco Oil & Gas Corp CODE: 40700 7) DESIGNATED AGENT Robert A. Williamson
 Address P.O. Box 99 Address 43 Meadowcrest Dr.
 Belpre, Ohio 45714 Parkersburg, W. Va. 26101
 8) OIL & GAS INSPECTOR TO BE NOTIFIED 9) DRILLING CONTRACTOR:
 Name Rodney Dillon Name Century Petroleum Drilling Inc.
 Address PO Box 1526 Address 1801 Grand Central Ave.
 Sophia, W. Va. Vienna, W. Va.
 10) PROPOSED WELL WORK: Drill / Drill deeper / Redrill / Stimulate
 Plug off old formation / Perforate new formation
 Other physical change in well (specify) _____
 11) GEOLOGICAL TARGET FORMATION, Tuscarora Sandstone
 12) Estimated depth of completed well, 8800 feet
 13) Approximate trata depths: Fresh, 300 feet; salt, N/A 2360 feet.
 14) Approximate coal seam depths: 200 2348 Is coal being mined in the area? Yes / No

15) CASING AND TUBING PROGRAM See 067-313

CASING OR TUBING TYPE	SPECIFICATIONS					FOOTAGE INTERVALS		CEMENT FILL-UP OR SACKS (Cubic feet)	PACKERS
	Size	Grade	Weight per ft.	New	Used	For drilling	Left in well		
Conductor									
Fresh water	13 3/8	Lt. Sv.		X		325 Ft. 380	325 Ft. 380	110 Class A	CTS PER RULE 15.05 W/ 3% CaCl2
Coal									Sizes
Intermediate	9 5/8"	K55	36	X		3650 Ft.	3650 Ft.	See Attached	Sheet
Production	7"	N80	26	X		7900 Ft.	7900 Ft.	185 Sks. Class	Sept 13 sw/1% HALAD 344
Tubing	2 7/8"	J55	6.5	X		7900 Ft.	7900 Ft.	790 Sks	OR AS REQUIRED
Liners								BY RULE 15.01	Top Bottom

OFFICE USE ONLY
 DRILLING PERMIT

Permit number 47-067-0651 August 6 19 87
 Date

This permit covering the well operator and well location shown below is evidence of permission granted to drill in accordance with the pertinent legal requirements subject to the conditions contained herein and on the reverse hereof. Notification must be given to the District Oil and Gas Inspector. (Refer to No. 8) Prior to the construction of roads, locations and pits for any permitted work. In addition, the well operator or his contractor shall notify the proper district oil and gas inspector 24 hours before actual permitted work has commenced.)

The permitted work is as described in the Notice and Application, plat, and reclamation plan, subject to any modifications and conditions specified on the reverse hereof.
 Permit expires August 6, 1989 unless well work is commenced prior to that date and prosecuted with due diligence.

Bond:	Agent:	Plat:	Casing	Fee	WPP	S&E	Other
				225			
				0723			

John H. Johnston
 Director, Division of Oil and Gas
 State of West Virginia

NOTE: Keep one copy of this permit posted at the drilling location.

See the reverse side of the APPLICANT'S COPY for instructions to the well operator.