

WW-7
8-30-06



West Virginia Department of Environmental Protection
Office of Oil and Gas
WELL LOCATION FORM: GPS

API: 47-067-00701 WELL NO.: 11070

FARM NAME: Consolidation Rail Corp.

RESPONSIBLE PARTY NAME: CNX Gas Company LLC

COUNTY: Nicholas DISTRICT: Grant

QUADRANGLE: Gilboa, WV

SURFACE OWNER: Bonnie J. Corp.

ROYALTY OWNER: Flynn Coal and Lumber

UTM GPS NORTHING: 4,236,896 m

UTM GPS EASTING: 501,828 m GPS ELEVATION: 895 m 1210 FT

The Responsible Party named above has chosen to submit GPS coordinates in lieu of preparing a new well location plat for a plugging permit or assigned API number on the above well. The Office of Oil and Gas will not accept GPS coordinates that do not meet the following requirements:

- Datum: NAD 1983, Zone: 17 North, Coordinate Units: meters, Altitude: height above mean sea level (MSL) – meters.
- Accuracy to Datum – 3.05 meters
- Data Collection Method:

Survey grade GPS : Post Processed Differential

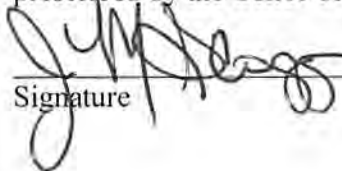
Real-Time Differential

Mapping Grade GPS : Post Processed Differential

Real-Time Differential

- Letter size copy of the topography map showing the well location.**

I the undersigned, hereby certify this data is correct to the best of my knowledge and belief and shows all the information required by law and the regulations issued and prescribed by the Office of Oil and Gas.


Signature

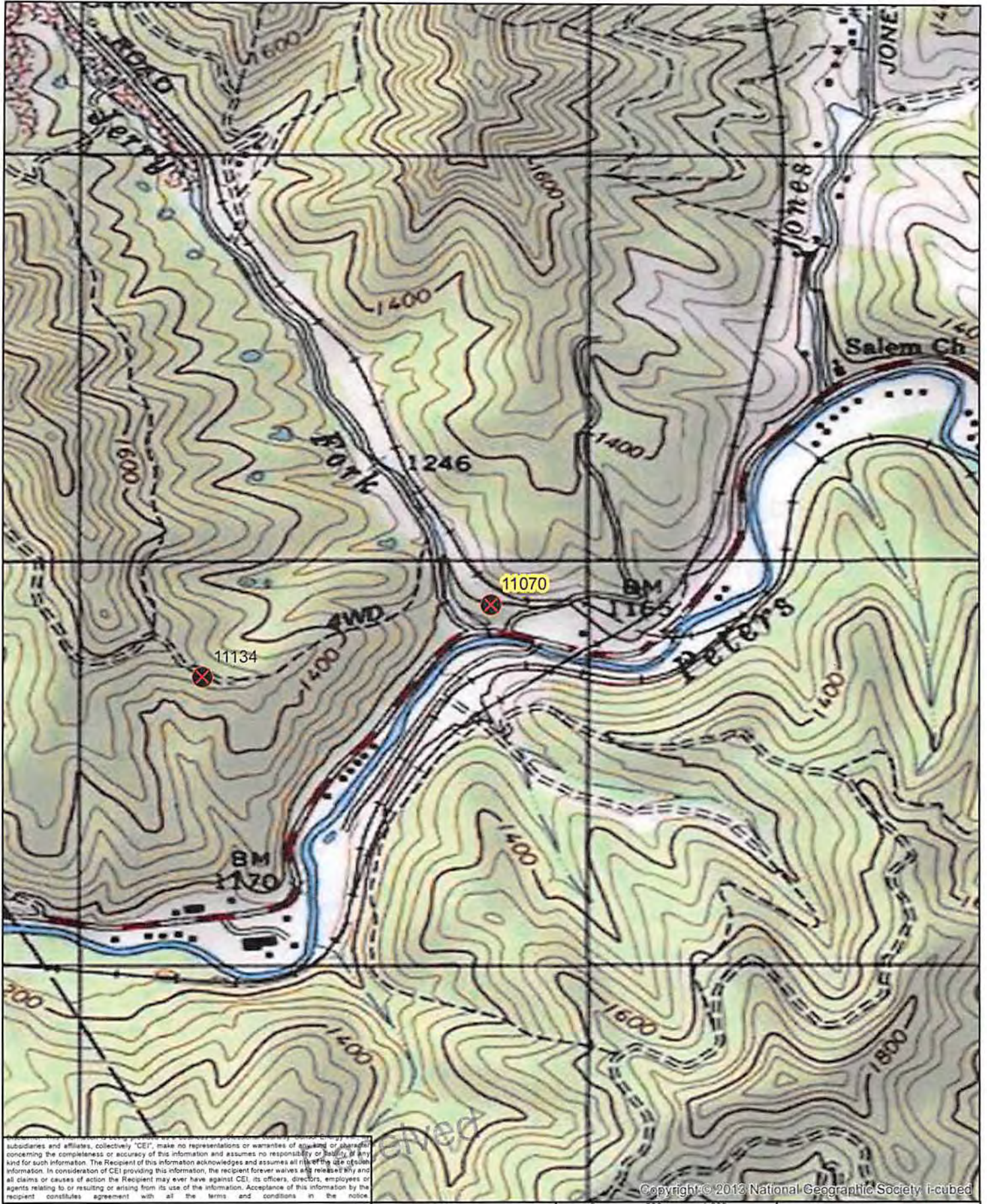
Production Coord
Title

3-28-14
Date

Received

OFFICE OF OIL AND GAS

Department of Environmental Protection



subsidaries and affiliates, collectively "CEI", make no representations or warranties of any kind or shall be held responsible for the completeness or accuracy of this information and assumes no responsibility or liability of any kind for such information. The Recipient of this information acknowledges and assumes all risks of the use of such information. In consideration of CEI providing this information, the recipient forever waives any right to sue CEI and all claims or causes of action the Recipient may ever have against CEI, its officers, directors, employees or agents relating to or resulting or arising from its use of the information. Acceptance of this information by the recipient constitutes agreement with all the terms and conditions in the notice.

Copyright © 2013 National Geographic Society. i-cubed

Office of Oil and Gas
 U.S. Dept. of Environmental Protection

0 500 1,000 Feet	
Date: 1/24/2014	Prepared By: KK
Revisions:	Approved By: BS
This map is property of CONSOL Energy Inc. and contains information that is proprietary and confidential in nature and may not be copied or reproduced without prior written consent.	

CONSOL ENERGY

PROPOSED PLUGGING
 WELL NUMBER 11070
 API# 47-067-00701
 GENERAL LOCATION MAP