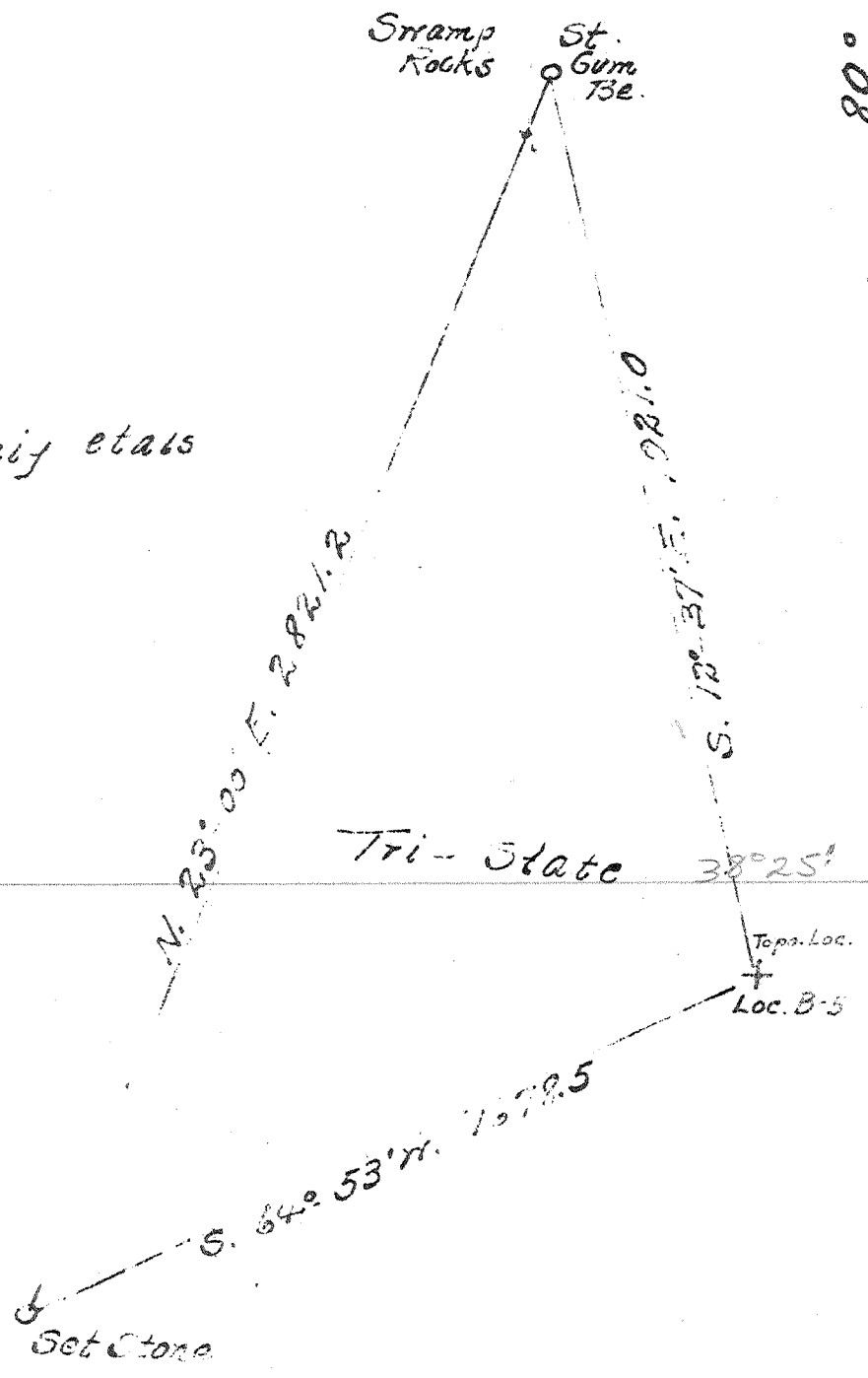


0 1 2 3

Latitud $38^{\circ} 30'$

Longitud $80^{\circ} 45'$

S.M. Craig et al



Company Hamilton Gas Co.
 Address 1200 UNION Bldg. Charleston, W. Va.
 Farm Tri-State
 Tract _____ Acres 100 Lease No. WN-3
 Well (Farm) No. _____ Serial No. B-5
 Elevation (Spirit Level) 2534.06
 Quadrangle Summersville
 County Nicholas District Hamilton
 Engineer S. H. ...
 Engineer's Registration No. 33
 File No. _____ Drawing No. _____
 Date 2-21-40 Scale 400 Ft.

STATE OF WEST VIRGINIA
 DEPARTMENT OF MINES
 OIL AND GAS DIVISION
 CHARLESTON

WELL LOCATION MAP
 FILE NO. NIC-B A

+ Denotes location of well on United States Topographic Maps, scale 1 to 62,500, latitude and longitude lines being represented by border lines as shown.
 - Denotes one inch spaces on border line of original tracing.

TRI-STATE NO. 1 (5) WELL.

2A

Hamilton District, Nicholas County, W. Va.

By Hamilton Oil & Gas Co.

Located on Little Creek, in Nicholas Co., W. Va., northeast of Hookersville.

Completed, June, 1924.

Elevation of surface, 2220'.

String of tools left in well - top of tools, 1988'; bottom, 2047'.

8 1/2" casing, 993'; 6-5/8", 1993'; 2" tubing (new), 1988'; perforation, 1980-1988'. 10" casing (240'), pulled.

Two packers in well: 2" x 6-5/8", set at 1960'; 2" x 6-5/8", set at 1980'. Special gas anchor. Conductor, 16'.

Water at 70'; hole full water, 160'.

	Top.	Bottom.
Coal	75	80
Slate	295	370
Sand, light, hard	370	635
Slate	635	640
Slate and shells	640	670
Sand	670	900
Slate	900	905
Sand	905	965
Slate	965	980
Sand	980	995
Salt? Sand (show of gas at 1015')	995	1073
Slate, black	1073	1140
Sand	1140	1210
Slate and shells	1210	1340
Grit, lime, and shells	1340	1495?
Sand	1491?	1530
Red rock	1530	1565
Lime	1565	1580
Sand	1580	1630
Red rock	1630	1687
Sand	1687	1806
Slate	1806	1831
Sand (Maxton?)	1831	1903
Slate	1903	1908
Lime (Little)	1908	1928
Slate	1928	1965
Lime	1965	1973
Slate (Pencil Cave)	1973	1986
Steel-line measurement	1993	
Big Lime	1988	1998
Slate	1998	2002
Lime	2002	2006
Gas - Big Injun	2008	2015
Slate	2015	2016
Sand (Big Injun)	2016	2086
Total depth		2086