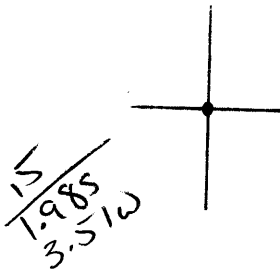


LATITUDE

38° 30' (15')

(15') 80° 45' 08

LONGITUDE



on Road Fork near
Clay-Nicholas Border

7'5 OGIS topo location

7.5' loc _____ 15' loc _____
 _____ (calc.) _____

#24

Company Hope

Farm EIK River Coal Land Co. (1553)

Quad Summersville (15') NE

County Nicholas

District Hamilton

WELL LOCATION MAP

File No. 067-70017