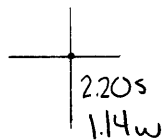


40°07'30"

Latitude

80°40'08"

Longitude



**Topo Location**

7.5' Loc. \_\_\_\_\_ 15' Loc. \_\_\_\_\_  
 \_\_\_\_\_ (calc.) \_\_\_\_\_

**Company** Washington Farms O+G Sand

**Farm** Washington Farms # 2

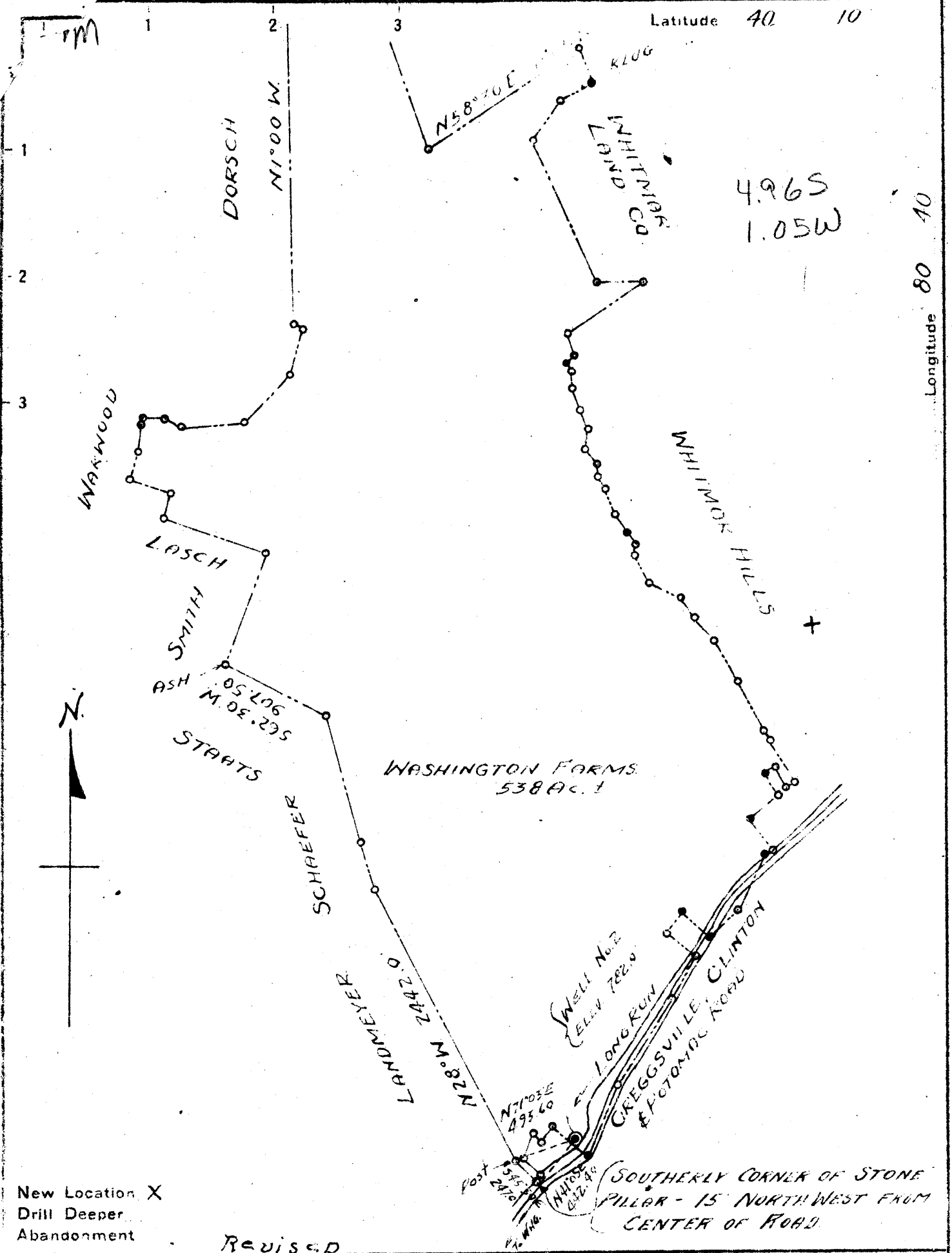
**15' Quad** \_\_\_\_\_  
(sec.)

**7.5' Quad** Wheeling

**District** Richland

**WELL LOCATION PLAT**

**County** 069 **Permit** 7



Company WASHINGTON FARMS OIL & GAS SYNDICATE  
 Address 70 EARL WATERHOUSE - 27th & Wood STREET  
WHEELING, W. VA.

Farm WASHINGTON FARMS

Tract \_\_\_\_\_ Acres 538 Lease No. \_\_\_\_\_

Well (Farm) No. 2 Serial No. \_\_\_\_\_

Elevation (Spirit Level) 782.0

Quadrangle WHEELING

County OHIO District RICHLAND

Engineer WALTER W. STEGMAN

Engineer's Registration No. 304

File No. \_\_\_\_\_ Drawing No. \_\_\_\_\_

Date May 14, 1945 Scale 1" = 400'

STATE OF WEST VIRGINIA  
 DEPARTMENT OF MINES  
 OIL AND GAS DIVISION  
 CHARLESTON

**WELL LOCATION MAP**  
 FILE NO. OHIO-7-R

+ Denotes location of well on United States Topographic Maps, scale 1 to 62,500, latitude and longitude lines as indicated by border lines as shown.

• Denotes the inch spaces on border lines.

WEST VIRGINIA DEPARTMENT OF MINES  
OIL & GAS DIVISION  
W E L L R E C O R D

Permit No. Ohio 7-revised

Dry Hole

Wheeling Quad.

CASING & TUBING

Company

Washington Oil & Gas Syndicate

Address

Wheeling, W.Va.

10 71

Farm

Edward Phillips Acres 537

8 1/2 700

Location

Long Run

6 5/8 1017

Well No.

#2 Elev.

District

Richland Ohio County

Mineral

Farm Owner

Commenced

June 4, 1945

Completed

June 30, 1945

Volume

Dry Hole

Well started 8' below Pgh. Coal outcrop.

Surface, Clay	S	0	34	
Slate Gr	S	34	217	
Sand Gr	S	217	224	
Slate Gr	S	224	490	
Sand Gr	H	490	508	
Lime Gr	H	508	605	
Sand Gr	S	605	635	
Slate Gr	S	635	655	
Sand Gr	S	655	822	
Slate Gr	S	822	865	
Sand Gr	S	865	993	
Slate Gr	S	993	1005	
Big Lime Gr	H	1005	1101	
Sand Wh	H	1105	1290	Show of oil 1108
Slate Gr	S	1290	1680	
TOTAL DEPTH			1680	

Well was plugged back with clay to 1298 and wood plug set at 1298-1295 with cement and a 100# lead plug at 1290. Then filled to 1130 with clay and wood plug at 1130 to 1127. This was to test show of oil at 1108'