



CHESAPEAKE APPALACHIA, LLC

Location: Ohio County, WV
 Field: Ohio
 Facility: OCC-A OHI Pad

Slot: Slot #03
 Well: OCC-A OHI 3H
 Wellbore: OCC-A OHI 3H PWB



RECEIVED
 JUL 06 2017
 WV GEOLOGICAL SURVEY
 MORGANTOWN, WV

Location Information

Facility Name			Grid East (US ft)	Grid North (US ft)	Latitude	Longitude
OCC-A OHI Pad			1692658.570	577140.550	40°04'45.800"N	80°35'53.921"W
Slot	Local N (ft)	Local E (ft)	Grid East (US ft)	Grid North (US ft)	Latitude	Longitude
Slot #03	0.00	0.00	1692658.570	577140.550	40°04'45.800"N	80°35'53.921"W
Nomac 243 (RT) to Mud line (At Slot: Slot #03)					16ft	
Mean Sea Level to Mud line (At Slot: Slot #03)					-1100ft	
Nomac 243 (RT) to Mean Sea Level					1116ft	

Well Profile Data

Design Comment	MD (ft)	Inc (°)	Az (°)	TVD (ft)	Local N (ft)	Local E (ft)	DLS (%100ft)	VS (ft)
Tie On	13169.00	90.700	345.700	6158.19	6608.29	-2924.97	0.00	7226.66
End of Tangent	13229.00	90.700	345.700	6157.46	6666.43	-2939.79	0.00	7285.80
End of 3D Arc	13824.86	93.000	334.000	6138.15	7224.53	-3144.54	2.00	7878.91
End of Tangent	14006.76	93.000	334.000	6128.63	7387.80	-3224.17	0.00	8060.45
3D Arc	14096.73	91.201	334.054	6125.34	7468.62	-3263.54	2.00	8150.31
PBHL	15851.72	91.201	334.054	6088.54	9046.38	-4031.22	0.00	9903.92

Tie-On Position

MD (ft)	Inc (°)	Az (°)	TVD (ft)	Local N (ft)	Local E (ft)	Grid East (US ft)	Grid North (US ft)	Latitude	Longitude
13169.00	90.700	345.700	6158.19	6608.29	-2924.97	1689733.68	563748.65	40°05'50.746"N	80°36'32.595"W

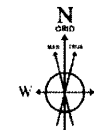
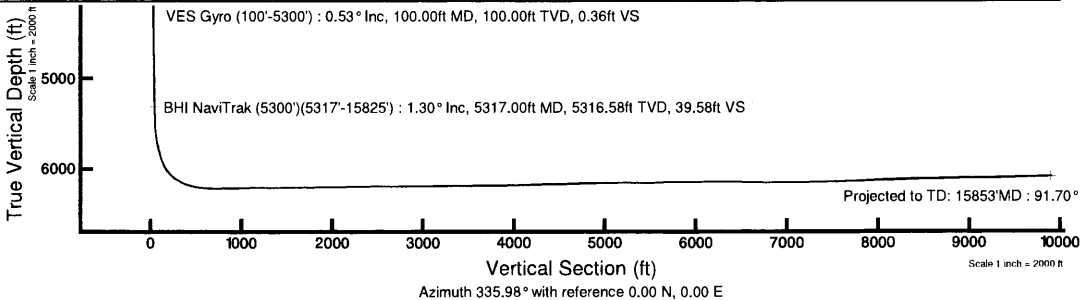
Bottom Hole Location

MD (ft)	Inc (°)	Az (°)	TVD (ft)	Local N (ft)	Local E (ft)	Grid East (US ft)	Grid North (US ft)	Latitude	Longitude
15851.72	91.201	334.054	6088.54	9046.38	-4031.22	1688627.47	586186.66	40°06'14.702"N	80°36'47.218"W

Targets

Name	MD (ft)	TVD (ft)	Local N (ft)	Local E (ft)	Grid East (US ft)	Grid North (US ft)	Latitude	Longitude
OCC-A OHI 3H PBHL Rev-3	6082.13	9046.38	-4031.22	1688627.47	586186.66	40°06'14.702"N	80°36'47.218"W	
OCC-A OHI 3H PBHL Rev-5	15851.72	9046.38	-4031.22	1688627.47	586186.66	40°06'14.702"N	80°36'47.218"W	
OCC-A OHI 3H PBHL Rev-4	6134.86	9046.38	-4031.22	1688627.47	586186.66	40°06'14.702"N	80°36'47.218"W	
OCC-A OHI 3H PBHL Rev-2	6138.57	9046.38	-4031.22	1688627.47	586186.66	40°06'14.702"N	80°36'47.218"W	
OCC-A OHI 3H LP Rev-3	6219.45	559.10	-296.24	1692362.34	577699.63	40°04'51.289"N	80°35'57.820"W	

Plot reference wellpath is OCC-A OHI 3H PWP Rev-F.0	
True vertical depths are referenced to Nomac 243 (RT)	Grid System: NAD27 / Lambert West Virginia SP, Northern Zone (4701), US feet
Measured depths are referenced to Nomac 243 (RT)	North Reference: Grid north
Nomac 243 (RT) to Mean Sea Level: 1116 feet	Scale: True distance
Mean Sea Level to Mud line (At Slot: Slot #03): -1100 feet	Depths are in feet
Coordinates are in feet referenced to Slot	Created by: frisjesl on 5/25/2012



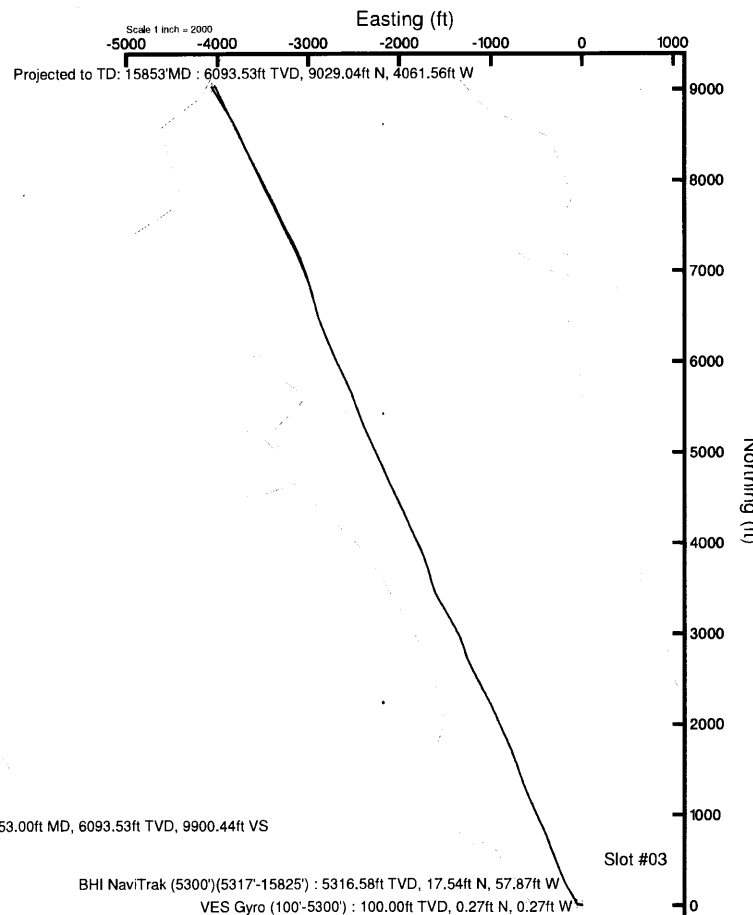
BRGM (1945.01-2013.0) [p. 67.61] Field 50999 -1
 Magnetic North is 8.75 degrees West of True North (at 4/26/2012)
 Grid North is 0.70 degrees West of True North
 To correct azimuth from True to Grid add 0.70 degrees
 To correct azimuth from Magnetic to Grid subtract 8.05 degrees
 For example if the Magnetic North Azimuth = 90 degs, then the Grid North Azimuth = 90 - 8.05

API#: 47-069-00096-0000

Rig: Nomac 243

BHI Job: 4611191

Duration: 05/08/2012-05/18/2012





Actual Wellpath Report

OCC-A OHI 3H AWP Proj:15853'MD

Page 1 of 10



REFERENCE WELLPATH IDENTIFICATION

Operator	CHESAPEAKE APPALACHIA, LLC	Slot	Slot #03
Area	Ohio County, WV	Well	OCC-A OHI 3H
Field	Ohio	Wellbore	OCC-A OHI 3H AWB
Facility	OCC-A OHI Pad		

REPORT SETUP INFORMATION

Projection System	NAD27 / Lambert West Virginia SP, Northern Zone (4701), US feet	Software System	WellArchitect® 3.0.0
North Reference	Grid	User	Frisjesl
Scale	0.999972	Report Generated	5/25/2012 at 10:09:45 AM
Convergence at slot	0.70° West	Database/Source file	WA_EasternUS/OCC-A_OHI_3H_AWB.xml

WELLPATH LOCATION

	Local coordinates		Grid coordinates		Geographic coordinates	
	North[ft]	East[ft]	Easting[US ft]	Northing[US ft]	Latitude	Longitude
Slot Location	0.00	0.00	1692658.57	577140.55	40°04'45.800"N	80°35'53.921"W
Facility Reference Pt			1692658.57	577140.55	40°04'45.800"N	80°35'53.921"W
Field Reference Pt			0.00	0.00	38°17'12.460"N	86°28'23.077"W

WELLPATH DATUM

Calculation method	Minimum curvature	Nomac 243 (RT) to Facility Vertical Datum	16.00ft
Horizontal Reference Pt	Slot	Nomac 243 (RT) to Mean Sea Level	1116.00ft
Vertical Reference Pt	Nomac 243 (RT)	Nomac 243 (RT) to Mud Line at Slot (Slot #03)	16.00ft
MD Reference Pt	Nomac 243 (RT)	Section Origin	N 0.00, E 0.00 ft
Field Vertical Reference	Mean Sea Level	Section Azimuth	335.98°

RECEIVED

JUL 06 2012

WV GEOLOGICAL SURVEY
MORGANTOWN, WV



Actual Wellpath Report

OCC-A OHI 3H AWP Proj:15853'MD
Page 2 of 10



REFERENCE WELLPATH IDENTIFICATION

Operator	CHESAPEAKE APPALACHIA, LLC	Slot	Slot #03
Area	Ohio County, WV	Well	OCC-A OHI 3H
Field	Ohio	Wellbore	OCC-A OHI 3H AWP
Facility	OCC-A OHI Pad		

WELLPATH DATA (197 stations) † = interpolated/extrapolated station

MD [ft]	Inclination [°]	Azimuth [°]	TVD [ft]	Vert Sect [ft]	North [ft]	East [ft]	Grid East [US ft]	Grid North [US ft]	Latitude	Longitude	Closure Dist [ft]	Closure Dir [°]	DLS [°/100ft]
0.00†	0.000	314.970	0.00	0.00	0.00	0.00	1692658.57	577140.55	40°04'45.800"N	80°35'53.921"W	0.00	0.000	0.00
16.00	0.000	314.970	16.00	0.00	0.00	0.00	1692658.57	577140.55	40°04'45.800"N	80°35'53.921"W	0.00	0.000	0.00
100.00	0.530	314.970	100.00	0.36	0.27	-0.27	1692658.30	577140.82	40°04'45.803"N	80°35'53.925"W	0.39	314.970	0.63
200.00	0.880	311.450	199.99	1.49	1.11	-1.18	1692657.39	577141.66	40°04'45.811"N	80°35'53.937"W	1.62	313.300	0.35
300.00	0.800	289.810	299.98	2.68	1.85	-2.41	1692656.16	577142.40	40°04'45.818"N	80°35'53.953"W	3.04	307.581	0.33
400.00	0.360	260.500	399.98	3.24	2.04	-3.38	1692655.19	577142.59	40°04'45.820"N	80°35'53.965"W	3.94	301.131	0.52
500.00	0.750	267.160	499.97	3.55	1.96	-4.34	1692654.23	577142.51	40°04'45.819"N	80°35'53.977"W	4.76	294.250	0.39
600.00	0.840	272.200	599.96	4.11	1.95	-5.73	1692652.84	577142.50	40°04'45.819"N	80°35'53.995"W	6.05	288.813	0.11
700.00	0.810	269.920	699.95	4.72	1.98	-7.17	1692651.40	577142.53	40°04'45.819"N	80°35'54.014"W	7.43	285.432	0.04
800.00	1.000	272.840	799.94	5.40	2.02	-8.74	1692649.83	577142.57	40°04'45.819"N	80°35'54.034"W	8.97	283.010	0.20
900.00	1.100	273.620	899.92	6.24	2.12	-10.57	1692648.00	577142.67	40°04'45.820"N	80°35'54.058"W	10.78	281.359	0.10
1000.00	1.240	274.640	999.90	7.21	2.27	-12.61	1692645.96	577142.82	40°04'45.821"N	80°35'54.084"W	12.81	280.215	0.14
1100.00	1.010	276.520	1099.88	8.18	2.46	-14.56	1692644.01	577143.01	40°04'45.823"N	80°35'54.109"W	14.77	279.587	0.23
1200.00	1.370	275.410	1199.86	9.21	2.67	-16.63	1692641.94	577143.22	40°04'45.825"N	80°35'54.136"W	16.84	279.130	0.36
1300.00	1.120	278.800	1299.84	10.33	2.93	-18.79	1692639.78	577143.48	40°04'45.827"N	80°35'54.163"W	19.01	278.879	0.26
1400.00	0.660	280.810	1399.82	11.19	3.19	-20.32	1692638.25	577143.74	40°04'45.829"N	80°35'54.183"W	20.57	278.930	0.46
1500.00	0.660	285.140	1499.82	11.88	3.45	-21.44	1692637.13	577144.00	40°04'45.832"N	80°35'54.198"W	21.71	279.144	0.05
1600.00	0.570	286.700	1599.81	12.57	3.74	-22.47	1692636.10	577144.29	40°04'45.834"N	80°35'54.211"W	22.78	279.460	0.09
1700.00	0.630	283.090	1699.81	13.22	4.01	-23.48	1692635.09	577144.56	40°04'45.837"N	80°35'54.224"W	23.82	279.694	0.07
1800.00	0.110	277.850	1799.80	13.61	4.15	-24.11	1692634.46	577144.70	40°04'45.838"N	80°35'54.232"W	24.47	279.763	0.52
1900.00	0.450	285.440	1899.80	13.91	4.27	-24.59	1692633.98	577144.82	40°04'45.839"N	80°35'54.238"W	24.96	279.845	0.34
2000.00	0.410	281.360	1999.80	14.36	4.44	-25.32	1692633.25	577144.99	40°04'45.841"N	80°35'54.248"W	25.70	279.952	0.05
2100.00	0.480	295.120	2099.80	14.89	4.69	-26.05	1692632.52	577145.24	40°04'45.843"N	80°35'54.257"W	26.47	280.208	0.13
2200.00	0.690	273.680	2199.79	15.48	4.91	-27.03	1692631.54	577145.46	40°04'45.845"N	80°35'54.270"W	27.47	280.290	0.30
2300.00	0.660	274.640	2299.78	16.04	4.99	-28.20	1692630.37	577145.54	40°04'45.846"N	80°35'54.285"W	28.64	280.038	0.03
2400.00	0.790	271.490	2399.78	16.61	5.06	-29.47	1692629.11	577145.61	40°04'45.847"N	80°35'54.301"W	29.90	279.738	0.14
2500.00	0.600	270.490	2499.77	17.13	5.08	-30.68	1692627.89	577145.63	40°04'45.847"N	80°35'54.311"W	31.10	279.400	0.19
2600.00	0.360	275.140	2599.76	17.50	5.11	-31.51	1692627.06	577145.66	40°04'45.847"N	80°35'54.327"W	31.93	279.213	0.24
2700.00	0.570	278.600	2699.76	17.92	5.21	-32.32	1692626.25	577145.76	40°04'45.848"N	80°35'54.338"W	32.74	279.165	0.21
2800.00	0.700	278.600	2799.76	18.52	5.38	-33.41	1692625.16	577145.93	40°04'45.849"N	80°35'54.352"W	33.85	279.146	0.13

WV GEOLOGICAL SURVEY
MORGANTOWN, WV

RECEIVED
JUL 0 31 2010



Actual Wellpath Report

OCC-A OHI 3H AWP Proj:15853'MD
Page 3 of 10



REFERENCE WELLPATH IDENTIFICATION

Operator	CHESAPEAKE APPALACHIA, LLC	Slot	Slot #03
Area	Ohio County, WV	Well	OCC-A OHI 3H
Field	Ohio	Wellbore	OCC-A OHI 3H AWB
Facility	OCC-A OHI Pad		

WELLPATH DATA (197 stations)

MD [ft]	Inclination [°]	Azimuth [°]	TVD [ft]	Vert Sect [ft]	North [ft]	East [ft]	Grid East [US ft]	Grid North [US ft]	Latitude	Longitude	Closure Dist [ft]	Closure Dir [°]	DLS [°/100ft]
2900.00	0.740	279.530	2899.75	19.20	5.58	-34.66	1692623.92	577146.13	40°04'45.851"N	80°35'54.368"W	35.10	279.144	0.04
3000.00	0.540	295.730	2999.74	19.92	5.89	-35.72	1692622.85	577146.44	40°04'45.854"N	80°35'54.382"W	36.20	279.363	0.27
3100.00	0.680	298.340	3099.74	20.75	6.38	-36.66	1692621.91	577146.93	40°04'45.859"N	80°35'54.394"W	37.21	279.865	0.14
3200.00	0.260	292.140	3199.73	21.38	6.74	-37.40	1692621.17	577147.29	40°04'45.862"N	80°35'54.403"W	38.00	280.221	0.42
3300.00	0.680	281.720	3299.73	21.89	6.95	-38.19	1692620.38	577147.50	40°04'45.864"N	80°35'54.414"W	38.81	280.313	0.43
3400.00	0.350	279.970	3399.72	22.41	7.12	-39.07	1692619.50	577147.67	40°04'45.866"N	80°35'54.425"W	39.71	280.332	0.33
3500.00	0.900	279.300	3499.72	23.01	7.30	-40.15	1692618.43	577147.85	40°04'45.868"N	80°35'54.439"W	40.80	280.309	0.55
3600.00	0.560	276.710	3599.71	23.69	7.49	-41.41	1692617.17	577148.04	40°04'45.869"N	80°35'54.455"W	42.08	280.249	0.34
3700.00	0.350	272.430	3699.71	24.08	7.56	-42.20	1692616.38	577148.11	40°04'45.870"N	80°35'54.465"W	42.87	280.153	0.21
3800.00	0.800	271.730	3799.70	24.52	7.59	-43.20	1692615.37	577148.14	40°04'45.870"N	80°35'54.478"W	43.86	279.965	0.45
3900.00	0.620	273.500	3899.69	25.07	7.64	-44.44	1692614.13	577148.19	40°04'45.870"N	80°35'54.494"W	45.09	279.761	0.18
4000.00	0.710	274.190	3999.69	25.61	7.72	-45.59	1692612.98	577148.27	40°04'45.871"N	80°35'54.509"W	46.24	279.613	0.09
4100.00	0.890	281.990	4099.68	26.36	7.93	-46.97	1692611.60	577148.48	40°04'45.873"N	80°35'54.527"W	47.64	279.582	0.21
4200.00	0.480	290.250	4199.67	27.11	8.24	-48.13	1692610.45	577148.79	40°04'45.876"N	80°35'54.542"W	48.82	279.711	0.42
4300.00	0.760	295.230	4299.66	27.91	8.66	-49.12	1692609.45	577149.21	40°04'45.880"N	80°35'54.554"W	49.88	280.003	0.28
4400.00	0.310	300.580	4399.66	28.63	9.08	-49.95	1692608.62	577149.63	40°04'45.884"N	80°35'54.565"W	50.77	280.307	0.45
4500.00	0.930	308.590	4499.65	29.57	9.73	-50.82	1692607.75	577150.28	40°04'45.890"N	80°35'54.576"W	51.74	280.836	0.62
4600.00	0.280	312.390	4599.65	30.52	10.40	-51.63	1692606.94	577150.95	40°04'45.897"N	80°35'54.587"W	52.67	281.387	0.65
4700.00	0.980	319.010	4699.64	31.56	11.21	-52.37	1692606.20	577151.76	40°04'45.905"N	80°35'54.597"W	53.56	282.080	0.70
4800.00	0.820	322.360	4799.63	33.07	12.42	-53.37	1692605.20	577152.97	40°04'45.916"N	80°35'54.610"W	54.80	283.101	0.17
4900.00	0.800	325.100	4899.62	34.45	13.56	-54.21	1692604.36	577154.11	40°04'45.928"N	80°35'54.621"W	55.88	284.044	0.04
5000.00	0.890	319.140	4999.61	35.88	14.72	-55.12	1692603.46	577155.27	40°04'45.939"N	80°35'54.633"W	57.05	284.953	0.13
5100.00	0.760	316.870	5099.60	37.25	15.79	-56.08	1692602.49	577156.34	40°04'45.949"N	80°35'54.645"W	58.26	285.727	0.13
5200.00	0.620	312.380	5199.59	38.37	16.64	-56.93	1692601.64	577157.19	40°04'45.958"N	80°35'54.656"W	59.31	286.293	0.15
5300.00	0.560	317.100	5299.58	39.33	17.36	-57.66	1692600.91	577157.91	40°04'45.965"N	80°35'54.666"W	60.22	286.757	0.08
5317.00	1.300	308.000	5316.58	39.58	17.54	-57.87	1692600.70	577158.09	40°04'45.967"N	80°35'54.668"W	60.47	286.863	4.43
5360.00	2.200	310.000	5359.56	40.75	18.37	-58.89	1692599.68	577158.92	40°04'45.975"N	80°35'54.682"W	61.69	287.328	2.10
5403.00	2.300	317.900	5402.53	42.31	19.54	-60.10	1692598.47	577160.09	40°04'45.986"N	80°35'54.697"W	63.20	288.014	0.76
5446.00	2.400	331.500	5445.49	44.03	20.98	-61.11	1692597.46	577161.52	40°04'46.000"N	80°35'54.711"W	64.61	288.945	1.31
5490.00	2.400	339.700	5489.45	45.87	22.65	-61.87	1692596.71	577163.20	40°04'46.017"N	80°35'54.721"W	65.88	290.107	0.78

RECEIVED
JUL 0 3 2014



Actual Wellpath Report

OCC-A OHI 3H AWP Proj:15853'MD

Page 4 of 10

RECEIVED

JUL 06 2012

WV GEOLOGICAL SURVEY



REFERENCE WELLPATH IDENTIFICATION

Operator	CHESAPEAKE APPALACHIA, LLC	Slot	Slot #03
Area	Ohio County, WV	Well	OCC-A OHI 3H
Field	Ohio	Wellbore	OCC-A OHI 3H AWB
Facility	OCC-A OHI Pad		

WELLPATH DATA (197 stations)

MD [ft]	Inclination [°]	Azimuth [°]	TVD [ft]	Vert Sect [ft]	North [ft]	East [ft]	Grid East [US ft]	Grid North [US ft]	Latitude	Longitude	Closure Dist [ft]	Closure Dir [°]	DLS [°/100ft]
5533.00	2.100	337.800	5532.42	47.56	24.22	-62.48	1692596.10	577164.77	40°04'46.032"N	80°35'54.729"W	67.01	291.192	0.72
5577.00	5.100	331.300	5576.33	50.31	26.69	-63.72	1692594.85	577167.23	40°04'46.056"N	80°35'54.745"W	69.08	292.723	6.87
5620.00	5.900	336.300	5619.13	54.43	30.39	-65.53	1692593.05	577170.93	40°04'46.093"N	80°35'54.769"W	72.23	294.878	2.17
5664.00	7.500	337.200	5662.83	59.56	35.10	-67.55	1692591.02	577175.65	40°04'46.139"N	80°35'54.796"W	76.13	297.460	3.64
5708.00	10.500	336.700	5706.28	66.44	41.43	-70.25	1692588.32	577181.98	40°04'46.201"N	80°35'54.831"W	81.56	300.534	6.82
5751.00	12.700	337.900	5748.40	75.08	49.41	-73.58	1692585.00	577189.96	40°04'46.280"N	80°35'54.875"W	88.63	303.885	5.15
5794.00	14.000	333.700	5790.24	85.01	58.46	-77.66	1692580.91	577199.00	40°04'46.368"N	80°35'54.929"W	97.20	306.970	3.77
5838.00	15.700	324.700	5832.77	96.16	68.09	-83.46	1692575.11	577208.64	40°04'46.463"N	80°35'55.005"W	107.71	309.209	6.50
5881.00	16.200	329.200	5874.12	107.83	77.99	-89.89	1692568.68	577218.54	40°04'46.560"N	80°35'55.090"W	119.01	310.944	3.10
5924.00	19.100	334.600	5915.09	120.82	89.50	-95.98	1692562.59	577230.05	40°04'46.673"N	80°35'55.170"W	131.24	312.998	7.74
5968.00	24.500	332.600	5955.93	137.14	104.11	-103.27	1692555.30	577244.66	40°04'46.817"N	80°35'55.266"W	146.65	315.232	12.39
6012.00	30.700	330.400	5994.91	157.44	122.00	-113.03	1692545.54	577262.54	40°04'46.992"N	80°35'55.394"W	166.31	317.185	14.28
6055.00	37.000	329.200	6030.60	181.24	142.68	-125.09	1692533.48	577283.22	40°04'47.195"N	80°35'55.553"W	189.75	318.758	14.73
6098.00	43.000	328.500	6063.53	208.65	166.31	-139.39	1692519.18	577306.86	40°04'47.427"N	80°35'55.740"W	217.00	320.033	13.99
6141.00	48.700	329.700	6093.47	239.27	192.79	-155.21	1692503.36	577333.33	40°04'47.686"N	80°35'55.948"W	247.50	321.162	13.41
6185.00	54.800	331.200	6120.69	273.65	222.84	-172.23	1692486.34	577363.38	40°04'47.981"N	80°35'56.172"W	281.64	322.300	14.12
6227.00	61.200	332.800	6142.94	309.16	254.28	-188.93	1692469.65	577394.82	40°04'48.290"N	80°35'56.391"W	316.78	323.388	15.58
6270.00	65.800	334.700	6162.12	347.60	288.78	-205.93	1692452.65	577429.33	40°04'48.629"N	80°35'56.616"W	354.69	324.508	11.40
6314.00	70.100	336.500	6178.64	388.37	325.92	-222.76	1692435.81	577466.46	40°04'48.994"N	80°35'56.838"W	394.77	325.648	10.48
6358.00	74.700	337.600	6191.94	430.29	364.53	-239.11	1692419.47	577505.07	40°04'49.373"N	80°35'57.054"W	435.95	326.738	10.72
6401.00	77.600	338.400	6202.23	472.01	403.24	-254.74	1692403.83	577543.77	40°04'49.754"N	80°35'57.262"W	476.96	327.717	6.98
6445.00	80.700	339.000	6210.51	515.17	443.49	-270.44	1692388.14	577584.03	40°04'50.150"N	80°35'57.470"W	519.44	328.625	7.17
6488.00	83.400	339.500	6216.46	557.68	483.31	-285.52	1692373.05	577623.85	40°04'50.542"N	80°35'57.670"W	561.35	329.427	6.38
6532.00	85.300	339.400	6220.79	601.39	524.31	-300.89	1692357.69	577664.84	40°04'50.945"N	80°35'57.874"W	604.52	330.149	4.32
6575.00	86.800	339.000	6223.75	644.22	564.41	-316.13	1692342.45	577704.94	40°04'51.339"N	80°35'58.077"W	646.91	330.747	3.61
6618.00	89.000	338.600	6225.33	687.13	604.47	-331.67	1692326.91	577745.00	40°04'51.733"N	80°35'58.283"W	689.48	331.247	5.20
6662.00	90.600	339.400	6225.48	731.07	645.55	-347.43	1692311.15	577786.08	40°04'52.137"N	80°35'58.492"W	733.10	331.711	4.07
6705.00	90.700	340.200	6225.00	773.97	685.90	-362.28	1692296.30	577826.43	40°04'52.534"N	80°35'58.689"W	775.70	332.158	1.87
6751.00	91.100	340.100	6224.27	819.84	729.16	-377.90	1692280.68	577869.69	40°04'52.960"N	80°35'58.897"W	821.27	332.604	0.90
6792.00	91.000	339.600	6223.52	860.74	767.65	-392.02	1692266.56	577908.17	40°04'53.338"N	80°35'59.085"W	861.95	332.948	1.24



Actual Wellpath Report

OCC-A OHI 3H AWP Proj:15853' MW
Page 5 of 10

JUL 06 2012
GEOLOGICAL SURVEY
MORGANTOWN, WV



REFERENCE WELLPATH IDENTIFICATION

Operator	CHESAPEAKE APPALACHIA, LLC	Slot	Slot #03
Area	Ohio County, WV	Well	OCC-A OHI 3H
Field	Ohio	Wellbore	OCC-A OHI 3H AWB
Facility	OCC-A OHI Pad		

WELLPATH DATA (197 stations)

MD [ft]	Inclination [°]	Azimuth [°]	TVD [ft]	Vert Sect [ft]	North [ft]	East [ft]	Grid East [US ft]	Grid North [US ft]	Latitude	Longitude	Closure Dist [ft]	Closure Dir [°]	DLS [°/100ft]
6835.00	90.700	337.500	6222.88	903.69	807.66	-407.74	1692250.84	577948.19	40°04'53.732"N	80°35'59.293"W	904.75	333.213	4.93
6878.00	91.200	333.700	6222.17	946.68	846.81	-425.50	1692233.08	577987.33	40°04'54.117"N	80°35'59.528"W	947.70	333.322	8.91
6922.00	91.500	334.700	6221.13	990.64	886.41	-444.64	1692213.94	578026.93	40°04'54.506"N	80°35'59.780"W	991.68	333.361	2.37
7009.00	91.500	335.600	6218.86	1077.60	965.33	-481.19	1692177.39	578105.85	40°04'55.281"N	80°36'00.263"W	1078.61	333.505	1.03
7095.00	90.500	335.900	6217.36	1163.59	1043.72	-516.51	1692142.08	578184.24	40°04'56.051"N	80°36'00.730"W	1164.53	333.671	1.21
7182.00	90.500	336.200	6216.60	1250.59	1123.23	-551.82	1692106.76	578263.75	40°04'56.833"N	80°36'01.196"W	1251.46	333.836	0.34
7269.00	90.500	337.700	6215.84	1337.57	1203.28	-585.88	1692072.70	578343.79	40°04'57.620"N	80°36'01.647"W	1338.34	334.038	1.72
7356.00	90.500	338.300	6215.08	1424.51	1283.94	-618.47	1692040.12	578424.45	40°04'58.413"N	80°36'02.079"W	1425.14	334.280	0.69
7443.00	90.500	339.800	6214.32	1511.38	1365.18	-649.58	1692009.01	578505.69	40°04'59.212"N	80°36'02.492"W	1511.85	334.554	1.72
7531.00	90.400	339.900	6213.63	1599.18	1447.80	-679.89	1691978.70	578588.30	40°05'00.025"N	80°36'02.895"W	1599.49	334.845	0.16
7617.00	90.600	339.500	6212.88	1684.99	1528.45	-709.73	1691948.86	578668.96	40°05'00.818"N	80°36'03.292"W	1685.19	335.093	0.52
7703.00	90.300	340.300	6212.20	1770.79	1609.21	-739.28	1691919.31	578749.71	40°05'01.612"N	80°36'03.684"W	1770.90	335.326	0.99
7790.00	90.500	339.200	6211.59	1857.59	1690.83	-769.39	1691889.20	578831.33	40°05'02.415"N	80°36'04.085"W	1857.65	335.533	1.29
7877.00	90.500	337.600	6210.84	1944.51	1771.71	-801.42	1691857.18	578912.21	40°05'03.211"N	80°36'04.509"W	1944.54	335.661	1.84
7964.00	90.600	336.200	6210.00	2031.49	1851.73	-835.55	1691823.05	578992.23	40°05'03.997"N	80°36'04.961"W	2031.52	335.714	1.61
8051.00	90.900	335.100	6208.86	2118.48	1930.99	-871.41	1691787.18	579071.48	40°05'04.776"N	80°36'05.435"W	2118.51	335.711	1.31
8138.00	90.800	335.100	6207.57	2205.46	2009.89	-908.04	1691750.56	579150.38	40°05'05.551"N	80°36'05.919"W	2205.49	335.687	0.11
8225.00	90.600	335.200	6206.51	2292.45	2088.83	-944.60	1691714.00	579229.32	40°05'06.327"N	80°36'06.401"W	2292.48	335.667	0.26
8312.00	90.800	335.200	6205.44	2379.43	2167.80	-981.09	1691677.51	579308.28	40°05'07.103"N	80°36'06.883"W	2379.47	335.650	0.23
8399.00	90.700	333.600	6204.31	2466.39	2246.25	-1018.67	1691639.93	579386.73	40°05'07.873"N	80°36'07.379"W	2466.44	335.606	1.84
8485.00	90.800	332.600	6203.18	2552.27	2322.94	-1057.58	1691601.02	579463.42	40°05'08.627"N	80°36'07.892"W	2552.35	335.521	1.17
8572.00	90.300	333.000	6202.34	2639.13	2400.31	-1097.35	1691561.26	579540.79	40°05'09.386"N	80°36'08.416"W	2639.25	335.432	0.74
8659.00	90.600	333.100	6201.66	2726.02	2477.86	-1136.77	1691521.83	579618.34	40°05'10.148"N	80°36'08.935"W	2726.18	335.356	0.36
8746.00	90.400	332.200	6200.90	2812.87	2555.13	-1176.74	1691481.86	579695.61	40°05'10.907"N	80°36'09.461"W	2813.08	335.272	1.06
8833.00	90.400	334.200	6200.29	2899.76	2632.78	-1215.97	1691442.64	579773.25	40°05'11.669"N	80°36'09.978"W	2900.02	335.210	2.30
8920.00	90.700	337.200	6199.46	2986.74	2712.06	-1251.76	1691406.85	579852.53	40°05'12.448"N	80°36'10.451"W	2987.00	335.224	3.47
9006.00	90.500	344.000	6198.56	3072.41	2793.13	-1280.31	1691378.30	579933.59	40°05'13.246"N	80°36'10.831"W	3072.58	335.374	7.91
9090.00	90.600	341.300	6197.75	3155.83	2873.29	-1305.35	1691353.25	580013.76	40°05'14.035"N	80°36'11.166"W	3155.91	335.567	3.22
9177.00	90.400	336.900	6196.99	3242.67	2954.55	-1336.38	1691322.23	580095.01	40°05'14.834"N	80°36'11.578"W	3242.72	335.662	5.06
9264.00	90.400	331.900	6196.38	3329.61	3032.98	-1373.96	1691284.65	580173.44	40°05'15.605"N	80°36'12.074"W	3329.67	335.629	5.75



Actual Wellpath Report

OCC-A OHI 3H AWP Proj:15853'MD
Page 6 of 10

RECEIVED

JUL 03 2012

WV GEOLOGICAL SURVEY
MORGANTOWN, WV



REFERENCE WELLPATH IDENTIFICATION

Operator	CHESAPEAKE APPALACHIA, LLC	Slot	Slot #03
Area	Ohio County, WV	Well	OCC-A OHI 3H
Field	Ohio	Wellbore	OCC-A OHI 3H AWB
Facility	OCC-A OHI Pad		

WELLPATH DATA (197 stations)

MD [ft]	Inclination [°]	Azimuth [°]	TVD [ft]	Vert Sect [ft]	North [ft]	East [ft]	Grid East [US ft]	Grid North [US ft]	Latitude	Longitude	Closure Dist [ft]	Closure Dir [°]	DLS ["/100ft]
9352.00	90.400	330.000	6195.77	3417.27	3109.90	-1416.69	1691241.92	580250.36	40°05'16.359"N	80°36'12.636"W	3417.38	335.509	2.16
9438.00	90.400	329.600	6195.17	3502.76	3184.23	-1459.95	1691198.67	580324.68	40°05'17.089"N	80°36'13.204"W	3502.96	335.369	0.47
9524.00	90.500	330.100	6194.49	3588.27	3258.59	-1503.14	1691155.47	580399.04	40°05'17.818"N	80°36'13.772"W	3588.57	335.237	0.59
9612.00	90.400	330.400	6193.80	3675.83	3334.99	-1546.81	1691111.81	580475.44	40°05'18.568"N	80°36'14.345"W	3676.24	335.118	0.36
9698.00	90.400	333.600	6193.20	3761.61	3410.91	-1587.17	1691071.44	580551.36	40°05'19.313"N	80°36'14.877"W	3762.11	335.046	3.72
9785.00	90.400	339.400	6192.59	3848.56	3490.66	-1621.85	1691036.77	580631.10	40°05'20.097"N	80°36'15.335"W	3849.04	335.079	6.67
9871.00	91.500	344.200	6191.17	3934.08	3572.32	-1648.70	1691009.92	580712.76	40°05'20.901"N	80°36'15.694"W	3934.42	335.226	5.73
9959.00	91.500	344.800	6188.86	4021.08	3657.09	-1672.21	1690986.41	580797.53	40°05'21.736"N	80°36'16.010"W	4021.27	335.428	0.68
10046.00	91.400	341.600	6186.66	4107.35	3740.34	-1697.34	1690961.28	580880.78	40°05'22.555"N	80°36'16.346"W	4107.45	335.592	3.68
10134.00	91.500	340.000	6184.44	4195.01	3823.42	-1726.27	1690932.35	580963.85	40°05'23.373"N	80°36'16.731"W	4195.06	335.701	1.82
10222.00	91.500	338.900	6182.13	4282.82	3905.79	-1757.15	1690901.47	581046.22	40°05'24.183"N	80°36'17.142"W	4282.84	335.778	1.25
10307.00	91.300	335.700	6180.05	4367.76	3984.17	-1789.94	1690868.68	581124.60	40°05'24.953"N	80°36'17.576"W	4367.78	335.807	3.77
10394.00	91.500	334.700	6177.93	4454.72	4063.12	-1826.42	1690832.20	581203.55	40°05'25.729"N	80°36'18.058"W	4454.75	335.796	1.17
10481.00	91.400	334.500	6175.73	4541.67	4141.69	-1863.73	1690794.90	581282.11	40°05'26.501"N	80°36'18.550"W	4541.70	335.773	0.26
10568.00	91.500	335.700	6173.53	4628.63	4220.57	-1900.34	1690758.28	581361.00	40°05'27.276"N	80°36'19.034"W	4628.66	335.760	1.38
10655.00	91.200	335.000	6171.48	4715.60	4299.62	-1936.62	1690722.01	581440.04	40°05'28.053"N	80°36'19.513"W	4715.64	335.752	0.88
10742.00	91.000	335.100	6169.81	4802.57	4378.49	-1973.31	1690685.32	581518.91	40°05'28.827"N	80°36'19.998"W	4802.61	335.740	0.26
10828.00	90.900	335.800	6168.38	4888.56	4456.70	-2009.04	1690649.59	581597.12	40°05'29.596"N	80°36'20.470"W	4888.60	335.735	0.82
10915.00	91.000	335.300	6166.94	4975.54	4535.89	-2045.04	1690613.59	581676.30	40°05'30.374"N	80°36'20.945"W	4975.59	335.731	0.59
11002.00	90.800	332.800	6165.57	5062.47	4614.10	-2083.10	1690575.53	581754.51	40°05'31.142"N	80°36'21.447"W	5062.53	335.702	2.88
11089.00	90.600	335.800	6164.51	5149.42	4692.48	-2120.83	1690537.81	581832.89	40°05'31.912"N	80°36'21.945"W	5149.49	335.679	3.46
11174.00	90.800	337.200	6163.47	5234.41	4770.42	-2154.72	1690503.92	581910.83	40°05'32.678"N	80°36'22.393"W	5234.47	335.692	1.66
11261.00	90.100	336.300	6162.79	5321.40	4850.35	-2189.06	1690469.58	581990.76	40°05'33.464"N	80°36'22.848"W	5321.46	335.709	1.31
11348.00	89.900	334.300	6162.79	5408.39	4929.39	-2225.41	1690433.23	582069.79	40°05'34.241"N	80°36'23.328"W	5408.45	335.703	2.31
11434.00	90.400	335.400	6162.56	5494.37	5007.23	-2261.96	1690396.68	582147.63	40°05'35.005"N	80°36'23.811"W	5494.44	335.690	1.40
11522.00	91.900	334.600	6160.79	5582.33	5086.97	-2299.14	1690359.50	582227.37	40°05'35.789"N	80°36'24.302"W	5582.41	335.679	1.93
11609.00	92.600	335.400	6157.38	5669.25	5165.76	-2335.88	1690322.76	582306.15	40°05'36.563"N	80°36'24.787"W	5669.34	335.668	1.22
11696.00	91.600	336.400	6154.19	5756.19	5245.12	-2371.38	1690287.26	582385.51	40°05'37.343"N	80°36'25.256"W	5756.28	335.672	1.62
11783.00	89.900	338.100	6153.05	5843.16	5325.34	-2405.02	1690253.63	582465.73	40°05'38.131"N	80°36'25.702"W	5843.23	335.695	2.76
11869.00	89.900	339.500	6153.20	5929.05	5405.52	-2436.12	1690222.53	582545.90	40°05'38.920"N	80°36'26.115"W	5929.10	335.740	1.63



Actual Wellpath Report

OCC-A OHI 3H AWP Proj:15853 MD
Page 7 of 10

RECEIVED

JUL 03 2010

WV GEOLOGICAL SURVEY
MORGANTOWN



REFERENCE WELLPATH IDENTIFICATION

Operator	CHESAPEAKE APPALACHIA, LLC	Slot	Slot #03
Area	Ohio County, WV	Well	OCC-A OHI 3H
Field	Ohio	Wellbore	OCC-A OHI 3H AWB
Facility	OCC-A OHI Pad		

WELLPATH DATA (197 stations)

MD [ft]	Inclination [°]	Azimuth [°]	TVD [ft]	Vert Sect [ft]	North [ft]	East [ft]	Grid East [US ft]	Grid North [US ft]	Latitude	Longitude	Closure Dist [ft]	Closure Dir [°]	DLS [°/100ft]
11955.00	89.700	340.000	6153.50	6014.86	5486.20	-2465.88	1690192.76	582626.58	40°05'39.713"N	80°36'26.510"W	6014.89	335.798	0.63
12041.00	92.300	340.200	6152.00	6100.62	5567.04	-2495.15	1690163.50	582707.43	40°05'40.509"N	80°36'26.900"W	6100.63	335.858	3.03
12127.00	91.600	337.700	6149.07	6186.45	5647.25	-2526.02	1690132.63	582787.63	40°05'41.298"N	80°36'27.310"W	6186.45	335.901	3.02
12214.00	89.400	336.000	6148.32	6273.43	5727.24	-2560.21	1690098.43	582867.61	40°05'42.084"N	80°36'27.762"W	6273.43	335.914	3.20
12300.00	88.200	335.800	6150.12	6359.41	5805.72	-2595.32	1690063.32	582946.10	40°05'42.855"N	80°36'28.226"W	6359.41	335.914	1.41
12386.00	88.200	334.700	6152.82	6445.35	5883.78	-2631.31	1690027.34	583024.15	40°05'43.622"N	80°36'28.702"W	6445.36	335.905	1.28
12472.00	88.300	333.300	6155.44	6531.26	5961.04	-2668.99	1689989.66	583101.41	40°05'44.381"N	80°36'29.199"W	6531.27	335.880	1.63
12559.00	88.200	335.000	6158.10	6618.17	6039.29	-2706.91	1689951.75	583179.66	40°05'45.150"N	80°36'29.699"W	6618.19	335.857	1.96
12647.00	89.300	337.400	6160.02	6706.14	6119.79	-2742.41	1689916.25	583260.15	40°05'45.941"N	80°36'30.169"W	6706.16	335.862	3.00
12733.00	89.500	337.900	6160.92	6792.10	6199.32	-2775.11	1689883.55	583339.68	40°05'46.722"N	80°36'30.602"W	6792.11	335.884	0.63
12821.00	90.300	338.200	6161.08	6880.04	6280.94	-2808.00	1689850.65	583421.30	40°05'47.525"N	80°36'31.038"W	6880.05	335.912	0.97
12908.00	90.300	338.900	6160.62	6966.95	6361.91	-2839.81	1689818.84	583502.27	40°05'48.321"N	80°36'31.460"W	6966.96	335.945	0.80
12995.00	90.300	337.500	6160.16	7053.89	6442.69	-2872.12	1689786.53	583583.04	40°05'49.116"N	80°36'31.889"W	7053.89	335.973	1.61
13082.00	90.800	343.000	6159.33	7140.61	6524.53	-2901.51	1689757.15	583664.89	40°05'49.921"N	80°36'32.280"W	7140.61	336.025	6.35
13169.00	90.700	345.700	6158.19	7226.66	6608.29	-2924.97	1689733.68	583748.65	40°05'50.746"N	80°36'32.595"W	7226.69	336.125	3.11
13254.00	91.400	342.200	6156.63	7310.82	6689.95	-2948.47	1689710.19	583830.30	40°05'51.550"N	80°36'32.911"W	7310.88	336.215	4.20
13341.00	91.400	346.600	6154.50	7396.83	6773.70	-2971.85	1689686.81	583914.05	40°05'52.374"N	80°36'33.225"W	7396.96	336.311	5.06
13428.00	91.600	344.700	6152.23	7482.56	6857.96	-2993.40	1689665.26	583998.30	40°05'53.204"N	80°36'33.515"W	7482.78	336.419	2.20
13514.00	91.600	341.900	6149.83	7567.82	6940.29	-3018.10	1689640.56	584080.63	40°05'54.015"N	80°36'33.846"W	7568.13	336.497	3.25
13600.00	91.600	341.700	6147.42	7653.34	7021.95	-3044.95	1689613.71	584162.29	40°05'54.818"N	80°36'34.205"W	7653.73	336.557	0.23
13688.00	91.600	339.200	6144.97	7741.03	7104.84	-3074.39	1689584.27	584245.18	40°05'55.634"N	80°36'34.597"W	7741.49	336.601	2.84
13774.00	91.900	336.900	6142.34	7826.93	7184.57	-3106.52	1689552.15	584324.90	40°05'56.418"N	80°36'35.023"W	7827.42	336.617	2.70
13862.00	91.700	332.800	6139.57	7914.85	7264.17	-3143.89	1689514.77	584404.50	40°05'57.200"N	80°36'35.516"W	7915.31	336.597	4.66
13950.00	91.800	331.700	6136.89	8002.62	7342.01	-3184.84	1689473.82	584482.34	40°05'57.964"N	80°36'36.056"W	8003.02	336.550	1.25
14037.00	92.100	332.500	6133.93	8089.37	7418.85	-3225.53	1689433.14	584559.18	40°05'58.718"N	80°36'36.591"W	8089.71	336.502	0.98
14124.00	91.300	334.300	6131.35	8176.24	7496.60	-3264.47	1689394.20	584636.93	40°05'59.482"N	80°36'37.105"W	8176.54	336.469	2.26
14211.00	91.200	334.000	6129.45	8263.18	7574.88	-3302.39	1689356.28	584715.20	40°06'00.251"N	80°36'37.605"W	8263.45	336.444	0.36
14298.00	91.800	334.200	6127.17	8350.10	7653.11	-3340.38	1689318.29	584793.43	40°06'01.019"N	80°36'38.106"W	8350.35	336.420	0.73
14384.00	91.300	333.000	6124.84	8435.99	7730.12	-3378.60	1689280.07	584870.43	40°06'01.775"N	80°36'38.610"W	8436.21	336.391	1.51
14471.00	91.300	333.500	6122.87	8522.87	7807.78	-3417.75	1689240.92	584948.10	40°06'02.538"N	80°36'39.126"W	8523.06	336.359	0.57



Actual Wellpath Report

OCC-A OHI 3H AWP Proj:15853'MD

Page 8 of 10

RECEIVED

JUL 08 2017

WV GEOLOGICAL SURVEY
MORGANTOWN, WV



REFERENCE WELLPATH IDENTIFICATION

Operator	CHESAPEAKE APPALACHIA, LLC	Slot	Slot #03
Area	Ohio County, WV	Well	OCC-A OHI 3H
Field	Ohio	Wellbore	OCC-A OHI 3H AWP
Facility	OCC-A OHI Pad		

WELLPATH DATA (197 stations)

MD [ft]	Inclination [°]	Azimuth [°]	TVD [ft]	Vert Sect [ft]	North [ft]	East [ft]	Grid East [US ft]	Grid North [US ft]	Latitude	Longitude	Closure Dist [ft]	Closure Dir [°]	DLS [°/100ft]
14558.00	91.200	334.500	6120.97	8609.80	7885.96	-3455.88	1689202.79	585026.27	40°06'03.306"N	80°36'39.630"W	8609.96	336.335	1.15
14645.00	91.300	333.700	6119.07	8696.73	7964.20	-3493.87	1689164.80	585104.51	40°06'04.075"N	80°36'40.131"W	8696.88	336.313	0.93
14731.00	91.300	332.600	6117.12	8782.60	8040.91	-3532.70	1689125.97	585181.22	40°06'04.828"N	80°36'40.643"W	8782.72	336.282	1.28
14818.00	91.300	332.000	6115.15	8869.40	8117.92	-3573.13	1689085.54	585258.23	40°06'05.584"N	80°36'41.175"W	8869.49	336.243	0.69
14905.00	91.300	333.100	6113.18	8956.22	8195.10	-3613.23	1689045.45	585335.41	40°06'06.342"N	80°36'41.703"W	8956.29	336.207	1.26
14991.00	91.400	333.700	6111.15	9042.11	8271.98	-3651.72	1689006.96	585412.28	40°06'07.097"N	80°36'42.211"W	9042.16	336.181	0.71
15078.00	90.400	334.400	6109.78	9129.05	8350.20	-3689.79	1688968.89	585490.50	40°06'07.865"N	80°36'42.713"W	9129.09	336.160	1.40
15164.00	90.300	334.900	6109.26	9215.02	8427.91	-3726.61	1688932.07	585568.21	40°06'08.628"N	80°36'43.199"W	9215.06	336.146	0.59
15251.00	90.400	335.100	6108.73	9302.01	8506.76	-3763.38	1688895.31	585647.05	40°06'09.403"N	80°36'43.685"W	9302.04	336.135	0.26
15339.00	91.400	333.500	6107.34	9389.95	8586.04	-3801.53	1688857.15	585726.33	40°06'10.182"N	80°36'44.189"W	9389.98	336.118	2.14
15425.00	91.400	330.200	6105.24	9475.69	8661.84	-3842.09	1688816.60	585802.13	40°06'10.926"N	80°36'44.723"W	9475.71	336.080	3.84
15513.00	91.200	328.700	6103.25	9563.10	8737.60	-3886.80	1688771.88	585877.89	40°06'11.669"N	80°36'45.310"W	9563.10	336.019	1.72
15599.00	91.700	327.800	6101.07	9648.29	8810.70	-3932.04	1688726.65	585950.99	40°06'12.386"N	80°36'45.904"W	9648.29	335.950	1.20
15686.00	91.700	328.800	6098.49	9734.47	8884.69	-3977.74	1688680.95	586024.98	40°06'13.111"N	80°36'46.504"W	9734.48	335.882	1.15
15773.00	91.700	330.100	6095.91	9820.86	8959.58	-4021.94	1688636.75	586099.86	40°06'13.846"N	80°36'47.084"W	9820.90	335.825	1.49
15825.00	91.700	330.400	6094.36	9872.58	9004.71	-4047.73	1688610.96	586144.99	40°06'14.289"N	80°36'47.423"W	9872.63	335.795	0.58
15853.00	91.700	330.400	6093.53	9900.44	9029.04	-4061.56	1688597.14	586169.32	40°06'14.527"N	80°36'47.605"W	9900.50	335.780	0.00



Actual Wellpath Report

OCC-A OHI 3H AWP Proj:15853'MD

Page 9 of 10

RECEIVED

JUL 0 2017

WV GEOLOGICAL SURVEY
MORGANTHAU



REFERENCE WELLPATH IDENTIFICATION

Operator	CHESAPEAKE APPALACHIA, LLC	Slot	Slot #03
Area	Ohio County, WV	Well	OCC-A OHI 3H
Field	Ohio	Wellbore	OCC-A OHI 3H AWB
Facility	OCC-A OHI Pad		

TARGETS

Name	MD [ft]	TVD [ft]	North [ft]	East [ft]	Grid East [US ft]	Grid North [US ft]	Latitude	Longitude	Shape
OCC-A OHI 3H PBHL Rev-3		6082.13	9046.38	-4031.22	1688627.47	586186.66	40°06'14.702"N	80°36'47.218"W	point
OCC-A OHI 3H PBHL Rev-5		6088.54	9046.38	-4031.22	1688627.47	586186.66	40°06'14.702"N	80°36'47.218"W	point
OCC-A OHI 3H PBHL Rev-4		6134.86	9046.38	-4031.22	1688627.47	586186.66	40°06'14.702"N	80°36'47.218"W	point
OCC-A OHI 3H PBHL Rev-2		6138.57	9046.38	-4031.22	1688627.47	586186.66	40°06'14.702"N	80°36'47.218"W	point
OCC-A OHI 3H LP Rev-3		6219.45	559.10	-296.24	1692362.34	577699.63	40°04'51.289"N	80°35'57.820"W	point

WELLPATH COMPOSITION - Ref Wellbore: OCC-A OHI 3H AWB Ref Wellpath: OCC-A OHI 3H AWP Proj:15853'MD

Start MD [ft]	End MD [ft]	Positional Uncertainty Model	Log Name/Comment	Wellbore
16.00	5300.00	Generic gyro - northseeking (Standard)	VES Gyro (100'-6230')	OCC-A OHI 3H AWB
5300.00	15825.00	NaviTrak (MagCorr)	BHI NaviTrak (5300')(5317'-15825')	OCC-A OHI 3H AWB
15825.00	15853.00	Blind Drilling (std)	Projection to bit	OCC-A OHI 3H AWB



Actual Wellpath Report

OCC-A OHI 3H AWP Proj:15853'MD
Page 10 of 10

RECEIVED

JUL 06 2012

WV GEOLOGICAL SURVEY
MORGANTOWN, WV



REFERENCE WELLPATH IDENTIFICATION

Operator	CHESAPEAKE APPALACHIA, LLC	Slot	Slot #03
Area	Ohio County, WV	Well	OCC-A OHI 3H
Field	Ohio	Wellbore	OCC-A OHI 3H AWP
Facility	OCC-A OHI Pad		

COMMENTS

Wellpath general comments

API#: 47-069-00096-0000

Rig: Nomac 243

BHI Job#: 4611191

Duration: 05/08/2012-05/18/2012

VES Gyro (100'-5300')

BHI NaviTrak (5300')(5317'-15825')

Projected to TD: 15853'MD