

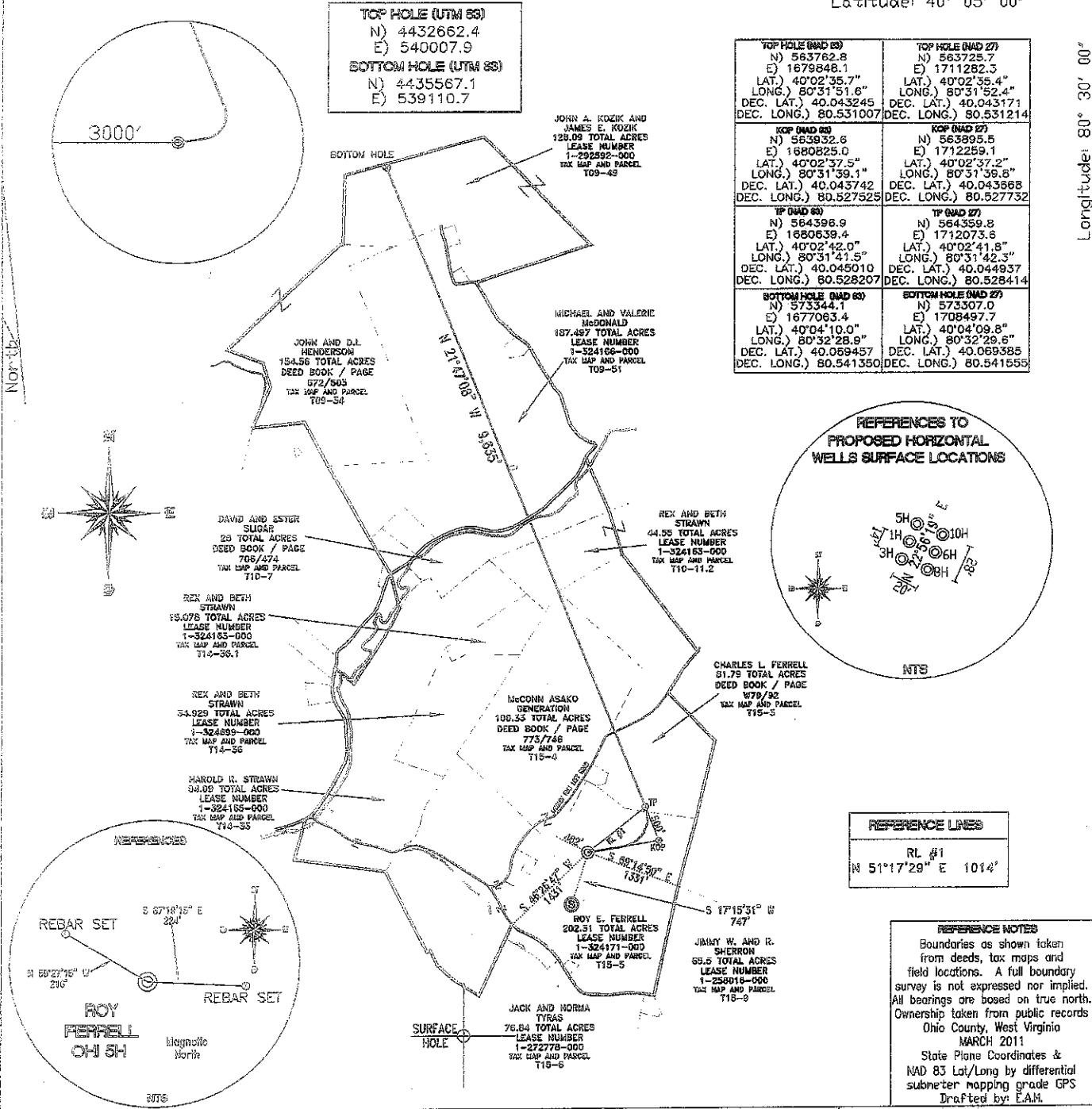
SURFACE HOLE DEC. LONG 80.531007
SURVEYED LONG 80° 31' 31.6"

8,660'

Latitude: 40° 05' 00"

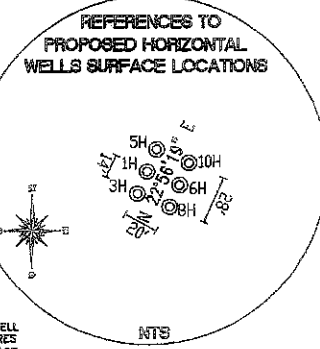
Longitude: 80° 30' 00"

14,560'
SURFACE HOLE DEC. LAT. 40° 02' 35.7"
SURVEYED LAT. 40° 02' 35.7"



TOP HOLE (UTM 8S)
N) 4432662.4
E) 540007.9
BOTTOM HOLE (UTM 8S)
N) 4435567.1
E) 539110.7

TOP HOLE (NAD 83) N) 563762.8 E) 1679848.1 LAT.) 40°02'35.7" LONG.) 80°31'51.6" DEC. LAT.) 40.043245 DEC. LONG.) 80.531007	TOP HOLE (NAD 27) N) 563725.7 E) 1711282.3 LAT.) 40°02'35.4" LONG.) 80°31'52.4" DEC. LAT.) 40.043171 DEC. LONG.) 80.531214
KOP (NAD 83) N) 563832.6 E) 1680825.0 LAT.) 40°02'37.5" LONG.) 80°31'59.1" DEC. LAT.) 40.043742 DEC. LONG.) 80.528207	KOP (NAD 27) N) 563895.5 E) 1712259.1 LAT.) 40°02'37.2" LONG.) 80°31'59.8" DEC. LAT.) 40.043668 DEC. LONG.) 80.527732
TP (NAD 83) N) 564398.9 E) 1680639.4 LAT.) 40°02'42.0" LONG.) 80°31'41.5" DEC. LAT.) 40.045010 DEC. LONG.) 80.528207	TP (NAD 27) N) 564359.8 E) 1712073.6 LAT.) 40°02'41.8" LONG.) 80°31'42.3" DEC. LAT.) 40.044937 DEC. LONG.) 80.528414
BOTTOM HOLE (NAD 83) N) 573344.1 E) 1677063.4 LAT.) 40°04'10.0" LONG.) 80°32'28.9" DEC. LAT.) 40.069457 DEC. LONG.) 80.541350	BOTTOM HOLE (NAD 27) N) 573307.0 E) 1708497.7 LAT.) 40°04'09.8" LONG.) 80°32'29.8" DEC. LAT.) 40.069385 DEC. LONG.) 80.541555



REFERENCE LINES
RL #1
N 51°17'29" E 1014'

REFERENCE NOTES
Boundaries as shown taken from deeds, tax maps and field locations. A full boundary survey is not expressed nor implied. All bearings are based on true north. Ownership taken from public records Ohio County, West Virginia MARCH 2011
State Plane Coordinates & NAD 83 Lat/Long by differential submeter mapping grade GPS
Drafted by: E.A.M.

FILE #1: CHE 034
DRAWING #1: 1854
SCALE: 1"=2000'
MINIMUM DEGREE OF ACCURACY: 1/200
PROVEN SOURCE SUBMETER MAPPING OF ELEVATION: GRADE GPS

I, THE UNDERSIGNED, HEREBY CERTIFY THAT THIS PLAT IS CORRECT TO THE BEST OF MY KNOWLEDGE AND BELIEF AND SHOWS ALL THE INFORMATION REQUIRED BY LAW AND THE REGULATIONS ISSUED AND PRESCRIBED BY THE DEPARTMENT OF ENVIRONMENTAL PROTECTION.
Signed:
L.L.S. #2124: Ernest J. Benchek III

DATE: NOVEMBER 11, 2011
OPERATOR'S WELL #: ROY FERRELL OHI 5H
API WELL #: 47 69 0012H
STATE COUNTY PERMIT

(+) DENOTES LOCATION OF WELL ON UNITED STATES TOPOGRAPHIC MAPS WVDOP
OFFICE OF OIL & GAS
601 5TH STREET
CHARLESTON, WV 25304

Well Type: Oil Waste Diposal Production Deep
 Gas Liquid Injection Storage Shallow

WATERSHED: UPPER OHIO SOUTH ELEVATION: 1,210'
COUNTY/DISTRICT: OHIO/TRIADELPHIA QUADRANGLE: VALLEY GROVE WV.
SURFACE OWNER: ROY E. FERRELL ACREAGE: 202.31 +/-
OIL & GAS ROYALTY OWNER: ROY E. FERRELL ACREAGE: 719.704 +/-
LEASE NUMBERS:

DRILL CONVERT DRILL DEEPER REDRILL FRACTURE OR STIMULATE
PLUG OFF FORMATION PERFORATE NEW FORMATION PLUG & ABANDON
CLEAN OUT & REPLUG OTHER CHANGE (SPECIFY):

TARGET FORMATION: MARCELLUS ESTIMATED DEPTH: TVD: 6,665' TMD: 16,690'
WELL OPERATOR: CHESAPEAKE APPALACHIA, LLC. DESIGNATED AGENT: ERIC B. GILLESPIE
ADDRESS: PO BOX 18496 ADDRESS: PO BOX 6070
CITY: OKLAHOMA CITY STATE: OK ZIP CODE: 73154-0496 CITY: CHARLESTON STATE: WV ZIP CODE: 25301

03/23/2012

69-00112H

WELL: ROY FERRELL OHI 5H
QUAD: VALLEY GROVE WV

