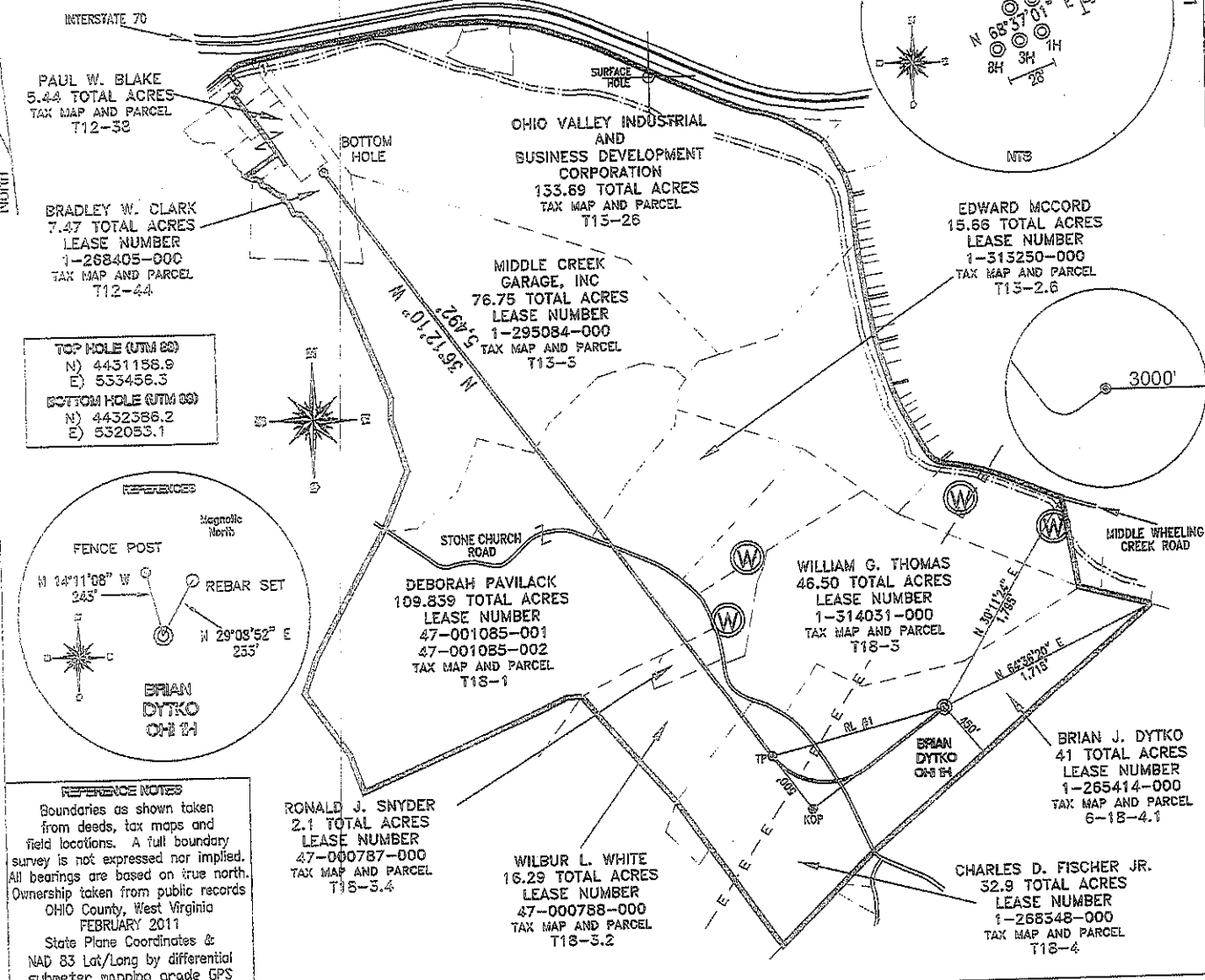
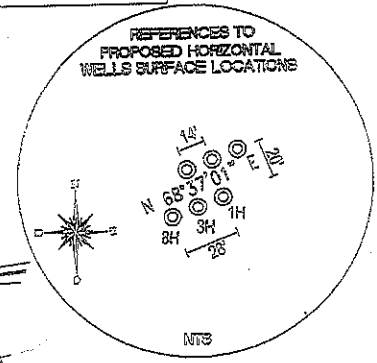
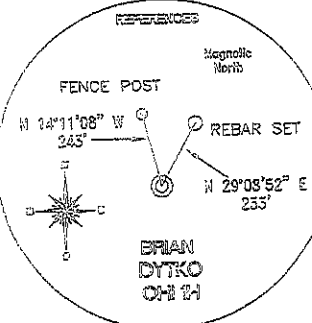


<b>TOP HOLE (NAD 83)</b> N) 559188.8 E) 1658266.2 LAT.) 40°01'47.9" LONG.) 80°36'28.4" DEC. LAT.) 40.029984 DEC. LONG.) 80.607884	<b>BOTTOM HOLE (NAD 83)</b> N) 563293.3 E) 1653728.9 LAT.) 40°02'27.9" LONG.) 80°37'27.4" DEC. LAT.) 40.041096 DEC. LONG.) 80.624268	<b>KOP (NAD 83)</b> N) 558458.2 E) 1657268.1 LAT.) 40°01'40.6" LONG.) 80°36'41.1" DEC. LAT.) 40.027945 DEC. LONG.) 80.611416	<b>TP (NAD 83)</b> N) 558861.7 E) 1656972.7 LAT.) 40°01'44.6" LONG.) 80°36'44.9" DEC. LAT.) 40.029042 DEC. LONG.) 80.612468
<b>TOP HOLE (NAD 27)</b> N) 559152.0 E) 1689701.0 LAT.) 40°01'47.7" LONG.) 80°36'29.1" DEC. LAT.) 40.029910 DEC. LONG.) 80.608086	<b>BOTTOM HOLE (NAD 27)</b> N) 563266.5 E) 1685163.9 LAT.) 40°02'27.7" LONG.) 80°37'28.1" DEC. LAT.) 40.041022 DEC. LONG.) 80.624470	<b>KOP (NAD 27)</b> N) 558412.4 E) 1688702.9 LAT.) 40°01'40.3" LONG.) 80°36'41.8" DEC. LAT.) 40.027871 DEC. LONG.) 80.611618	<b>TP (NAD 27)</b> N) 558824.9 E) 1688407.6 LAT.) 40°01'44.3" LONG.) 80°36'45.7" DEC. LAT.) 40.028968 DEC. LONG.) 80.612690

REFERENCE LINES
RL #1
S 75°45'22" W 1,534'



<b>TOP HOLE (UTM 83)</b> N) 4431158.9 E) 533456.3 <b>BOTTOM HOLE (UTM 83)</b> N) 4432586.2 E) 532053.1
---



**REFERENCE NOTES**  
 Boundaries as shown taken from deeds, tax maps and field locations. A full boundary survey is not expressed nor implied. All bearings are based on true north. Ownership taken from public records OHIO County, West Virginia FEBRUARY 2011  
 State Plane Coordinates & NAD 83 Lat/Long by differential submeter mapping grade GPS  
 Drafted by: E.A.H.

FILE #: CHE 033  
 DRAWING #: 1814  
 SCALE: 1" = 1200'  
 MINIMUM DEGREE OF ACCURACY: 1/200  
 PROVEN SOURCE OF ELEVATION: SUBMETER MAPPING GRADE GPS

I, THE UNDERSIGNED, HEREBY CERTIFY THAT THIS PLAT IS CORRECT TO THE BEST OF MY KNOWLEDGE AND BELIEF AND SHOWS ALL THE INFORMATION REQUIRED BY LAW AND THE REGULATIONS ISSUED AND PRESCRIBED BY THE DEPARTMENT OF ENVIRONMENTAL PROTECTION.  
 Signed:   
 L.L.S. #2124 : Ernest J. Benchek III

(+) DENOTES LOCATION OF WELL ON UNITED STATES TOPOGRAPHIC MAPS WVDENP  
 OFFICE OF OIL & GAS  
 601 57TH STREET  
 CHARLESTON, WV 25304

DATE: DECEMBER 01, 2011  
 OPERATOR'S WELL #: BRIAN DYTKO OHI 1H  
 API WELL #: 47 69 001516A  
 STATE COUNTY PERMIT

Well Type:  Oil  Waste Disposal  Production  Deep  
 Gas  Liquid Injection  Storage  Shallow

WATERSHED: UPPER OHIO SOUTH ELEVATION: 1,220.52'  
 COUNTY/DISTRICT: OHIO / TRIADDELPHIA QUADRANGLE: VALLEY GROVE, WV.  
 SURFACE OWNER: BRIAN J. DYTKO ACREAGE: 41.00 +/-  
 OIL & GAS ROYALTY OWNER: BRIAN J. DYTKO ACREAGE: 482.707 +/-  
 LEASE NUMBERS: 1-280169-001

DRILL  CONVERT  DRILL DEEPER  REDRILL  FRACTURE OR STIMULATE   
 PLUG OFF FORMATION  PERFORATE NEW FORMATION  PLUG & ABANDON   
 CLEAN OUT & REPLUG  OTHER CHANGE  (SPECIFY):

TARGET FORMATION: MARCELLUS ESTIMATED DEPTH: TVD: 6,374' TMD: 12,331'  
 WELL OPERATOR: CHESAPEAKE APPALACHIA, LLC. DESIGNATED AGENT: ERIC GILLESPIE  
 ADDRESS: PO BOX 18496 ADDRESS: PO BOX 6070  
 CITY: OKLAHOMA CITY STATE: OK ZIP CODE: 73154-0496 CITY: CHARLESTON STATE: WV ZIP CODE: 25301

109-001154

