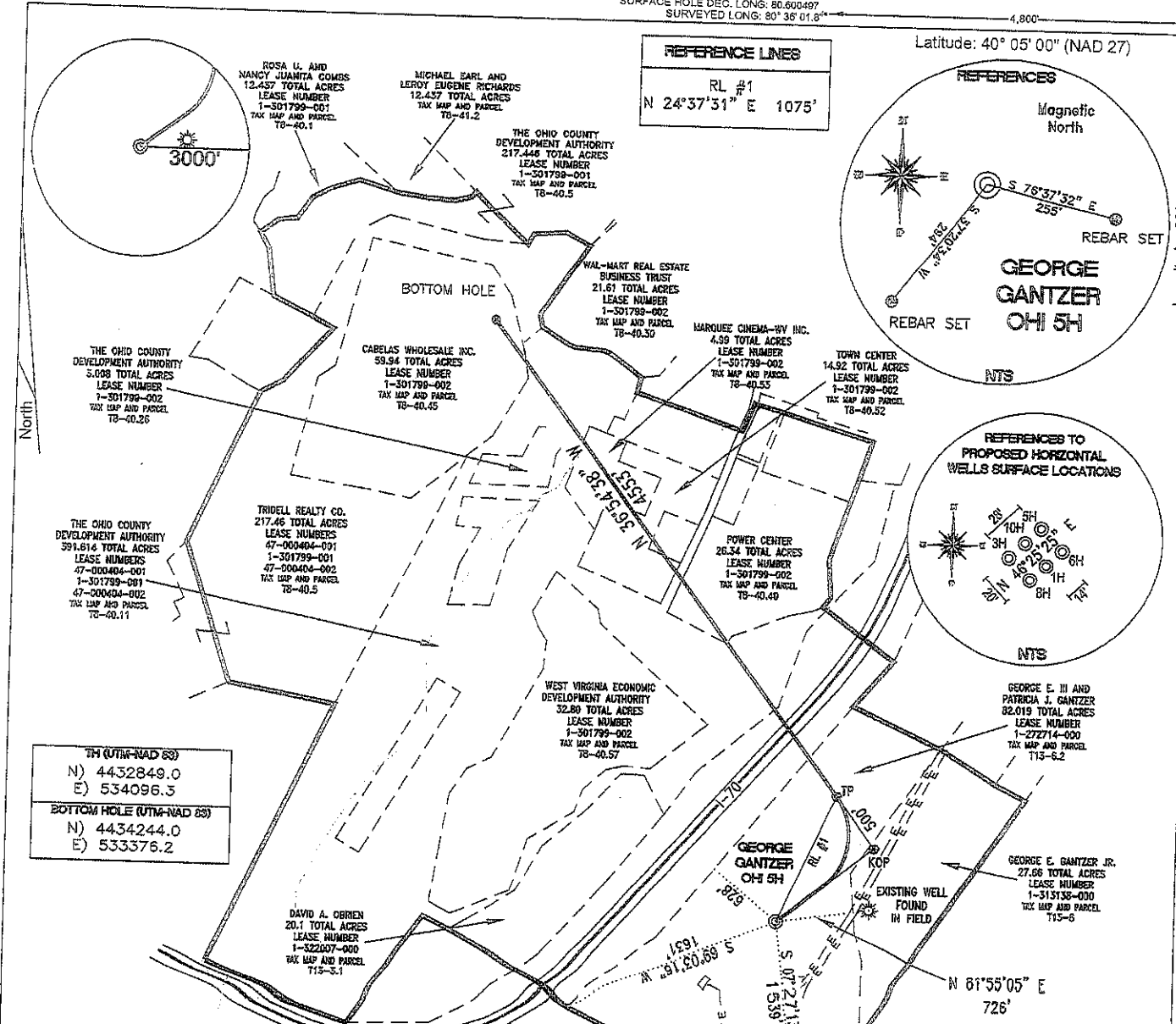
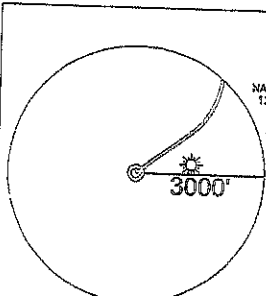
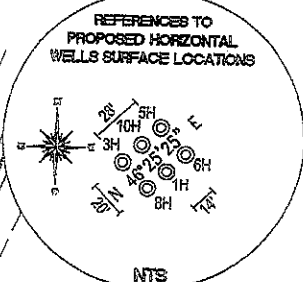
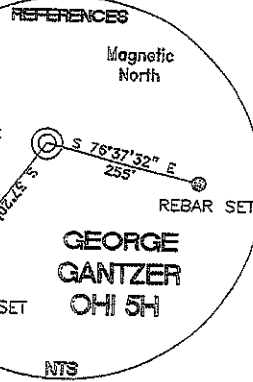


SURFACE HOLE DEC. LONG: 80.600497
 SURVEYED LONG: 80° 36' 01.8"

Latitude: 40° 05' 00" (NAD 27)

Longitude: 80° 35' 00" (NAD 27)

REFERENCE LINES
 RL #1
 N 24°37'31" E 1075'



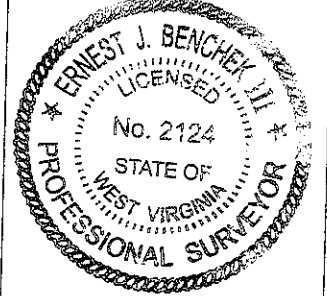
TH (UTM-NAD 83)
 N) 4432849.0
 E) 534096.3
 BOTTOM HOLE (UTM-NAD 83)
 N) 4434244.0
 E) 533376.2

TOP HOLE (NAD 83)	KOP (NAD 83)	TP (NAD 83)	BOTTOM HOLE (NAD 83)
N) 564700.0 E) 1660499.2 LAT.) 40°02'42.7" LONG.) 80°36'01.1" DEC. LAT.) 40.045187 DEC. LONG.) 80.600294	N) 565277.1 E) 1661207.3 LAT.) 40°02'48.5" LONG.) 80°35'51.5" DEC. LAT.) 40.046796 DEC. LONG.) 80.597648	N) 565676.8 E) 1660907.0 LAT.) 40°02'52.4" LONG.) 80°35'55.5" DEC. LAT.) 40.047883 DEC. LONG.) 80.598738	N) 569317.2 E) 1658172.7 LAT.) 40°03'28.0" LONG.) 80°36'31.2" DEC. LAT.) 40.057783 DEC. LONG.) 80.608664
TOP HOLE (NAD 27)	KOP (NAD 27)	TP (NAD 27)	BOTTOM HOLE (NAD 27)
N) 564663.2 E) 1691894.0 LAT.) 40°02'42.4" LONG.) 80°36'01.6" DEC. LAT.) 40.045113 DEC. LONG.) 80.600497	N) 565240.2 E) 1692642.0 LAT.) 40°02'48.2" LONG.) 80°35'52.3" DEC. LAT.) 40.046722 DEC. LONG.) 80.597851	N) 565640.0 E) 1692341.7 LAT.) 40°02'52.1" LONG.) 80°35'56.2" DEC. LAT.) 40.047809 DEC. LONG.) 80.598941	N) 569280.4 E) 1689607.5 LAT.) 40°03'27.8" LONG.) 80°36'31.9" DEC. LAT.) 40.057710 DEC. LONG.) 80.608857

REFERENCE NOTES
 Boundaries as shown taken from deeds, tax maps and field locations. A full boundary survey is not expressed nor implied. All bearings are based on true north. Ownership taken from public records Ohio County, West Virginia JUNE 2011
 State Plane Coordinates & NAD 83 Lat/Long by differential submeter mapping grade GPS
 Drafted by: E.A.M.

FILE #: CHE 019
 DRAWING #: 1860
 SCALE: 1"=1200'
 MINIMUM DEGREE OF ACCURACY: 1/200
 PROVEN SOURCE OF ELEVATION: SUBMETER MAPPING GRADE GPS

I, THE UNDERSIGNED, HEREBY CERTIFY THAT THIS PLAT IS CORRECT TO THE BEST OF MY KNOWLEDGE AND BELIEF AND SHOWS ALL THE INFORMATION REQUIRED BY LAW AND THE REGULATIONS ISSUED AND PRESCRIBED BY THE DEPARTMENT OF ENVIRONMENTAL PROTECTION.
 Signed: _____
 L.L.S. #2124 : Ernest J. Benchek III



(+) DENOTES LOCATION OF WELL ON UNITED STATES TOPOGRAPHIC MAPS WVDEP

OFFICE OF OIL & GAS
 601 57TH STREET
 CHARLESTON, WV 25304

Well Type: Oil Waste Diposal Production Deep Gas Liquid Injection Storage Shallow

WATERSHED: UPPER OHIO SOUTH ELEVATION: 1,260'

COUNTY/DISTRICT: OHIO/TRIDELPHIA QUADRANGLE: VALLEY GROVE WV.

SURFACE OWNER: GEORGE E. III AND PATRICIA J. GANTZER ACREAGE: 82.019 +/-

OIL & GAS ROYALTY OWNER: GEORGE E. III AND PATRICIA J. GANTZER ACREAGE: 579.823 +/-

LEASE NUMBERS: _____

DRILL CONVERT DRILL DEEPER REDRILL FRACTURE OR STIMULATE
 PLUG OFF FORMATION PERFORATE NEW FORMATION PLUG & ABANDON
 CLEAN OUT & REPLUG OTHER CHANGE (SPECIFY): _____

TARGET FORMATION: MARCELLUS

WELL OPERATOR : CHESAPEAKE APPALACHIA, LLC. ESTIMATED DEPTH: TVD: 6,394' TVD: 11,332'
 ADDRESS: PO BOX 18496 DESIGNATED AGENT : ERIC B. GILLESPIE
 CITY: OKLAHOMA CITY STATE: OK ZIP CODE: 73154-0496 CITY: CHARLESTON STATE: WV ZIP CODE: 25301

DATE: DECEMBER 09, 2011
 REVISED: APRIL 19, 2012

OPERATOR'S WELL #: GEORGE GANTZER OHI 5H
 API WELL #: 47 69 00118 H6A
 STATE COUNTY PERMIT

06/08/2012

WELL: GEORGE GANTZER-OHI 5H
QUAD: VALLEY GROVE WV

