

TOP HOLE GUID ID	TOP GUID ID	TP GUID ID	BOTTOM HOLE GUID ID
N) 564680.7 E) 1660439.0 LAT.) 40°02'42.2" LONG.) 80°36'01.3" DEC. LONG.) 80.600369	N) 564132.1 E) 155924.4 LAT.) 40°02'37.0" LONG.) 80°36'11.7" DEC. LAT.) 40.045133 DEC. LONG.) 80.603251	N) 564533.2 E) 1559325.7 LAT.) 40°02'40.9" LONG.) 80°36'15.6" DEC. LAT.) 40.044890 DEC. LONG.) 80.604335	N) 569326.0 E) 1657556.6 LAT.) 40°03'27.8" LONG.) 80°37'02.3" DEC. LAT.) 40.057725 DEC. LONG.) 80.617295
N) 554543.9 E) 1691873.7 LAT.) 40°02'42.2" LONG.) 80°36'02.0" DEC. LAT.) 40.045069 DEC. LONG.) 80.600569	N) 564095.3 E) 1691050.1 LAT.) 40°02'36.7" LONG.) 80°36'12.4" DEC. LAT.) 40.043226 DEC. LONG.) 80.603454	N) 554495.3 E) 1690750.5 LAT.) 40°02'40.5" LONG.) 80°36'16.3" DEC. LAT.) 40.044617 DEC. LONG.) 80.604538	N) 569289.2 E) 1697191.5 LAT.) 40°03'27.5" LONG.) 80°37'03.0" DEC. LAT.) 40.057852 DEC. LONG.) 80.617498

FILE #: CHE019  
DRAWING #: 1881  
SCALE: 1"=1400'  
MINIMUM DEGREE OF ACCURACY: 1/200  
PROVEN SOURCE: SUBMETER MAPPING OF ELEVATION: GRADE GPS

I, THE UNDERSIGNED, HEREBY CERTIFY THAT THIS PLAT IS CORRECT TO THE BEST OF MY KNOWLEDGE AND BELIEF AND SHOWS ALL THE INFORMATION REQUIRED BY LAW AND THE REGULATIONS ISSUED AND PRESCRIBED BY THE DEPARTMENT OF ENVIRONMENTAL PROTECTION.

Signed: [Signature]  
L.L.S. #2124 : Ernest J. Benchek III

DATE: JANUARY 30, 2013

OPERATOR'S WELL #: GEORGE GANTZER OHI 1H  
API WELL #: 47 69 00119 MOIS  
STATE COUNTY PERMIT

(+) DENOTES LOCATION OF WELL ON UNITED STATES TOPOGRAPHIC MAPS WYDEP  
OFFICE OF OIL & GAS  
601 57TH STREET  
CHARLESTON, WV 25304

Well Type:  Oil  Waste Dposal  Production  Deep  
 Gas  Liquid Injection  Storage  Shallow

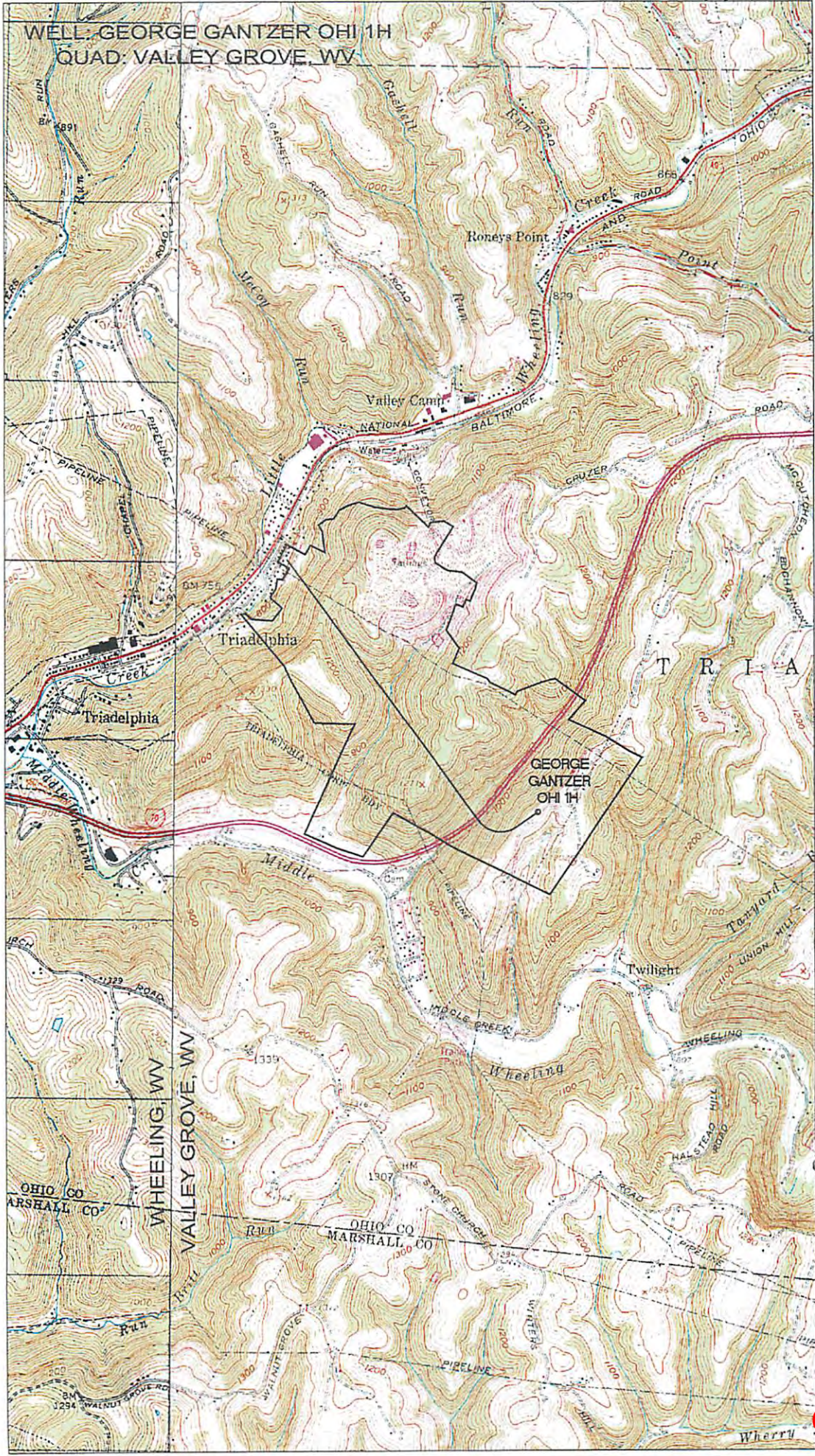
WATERSHED: UPPER OHIO SOUTH ELEVATION: 1,244'  
COUNTY/DISTRICT: OHIO/TRIDELPHIA QUADRANGLE: VALLEY GROVE WV.  
SURFACE OWNER: GEORGE E. III AND PATRICIA J. GANTZER ACREAGE: 82.019 +/-  
OIL & GAS ROYALTY OWNER: GEORGE E. III AND PATRICIA J. GANTZER ACREAGE: 810.952 +/-  
LEASE NUMBERS:

DRILL  CONVERT  DRILL DEEPER  REDRILL  FRACTURE OR STIMULATE   
PLUG OFF FORMATION  PERFORATE NEW FORMATION  PLUG & ABANDON   
CLEAN OUT & REPLUG  OTHER CHANGE  (SPECIFY):

TARGET FORMATION: MARCELLUS ESTIMATED DEPTH: TVD: 8,398' TMD: 12,757'  
WELL OPERATOR: CHESAPEAKE APPALACHIA, LLC. DESIGNATED AGENT: ERIC B. GILLESPIE  
ADDRESS: PO BOX 18496 ADDRESS: 414 SUMMER ST.  
CITY: OKLAHOMA CITY STATE: OK ZIP CODE: 73154-0496 CITY: CHARLESTON STATE: WV ZIP CODE: 25301

04/05/2013

6900119



WGH  
2-12-13

WGH  
2-12-13

04/05/2013