

SURFACE HOLE DEC. LONG: 80.541250
 SURVEYED LONG: 80° 32' 29.0"

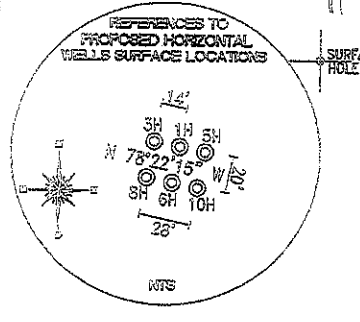
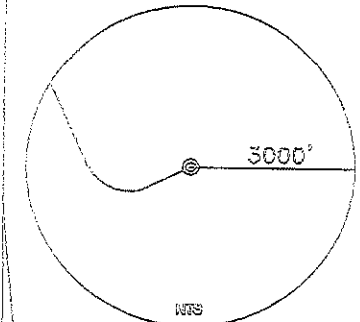
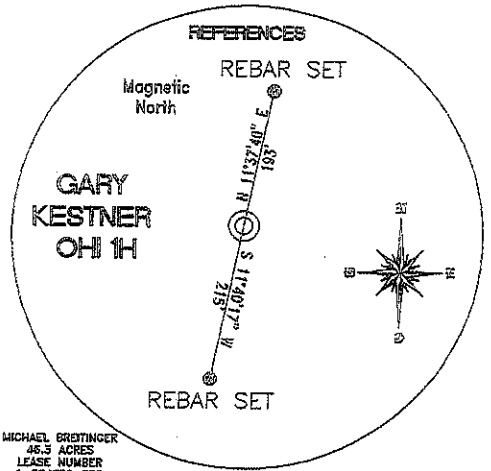
11,540

Latitude: 40° 10' 00"

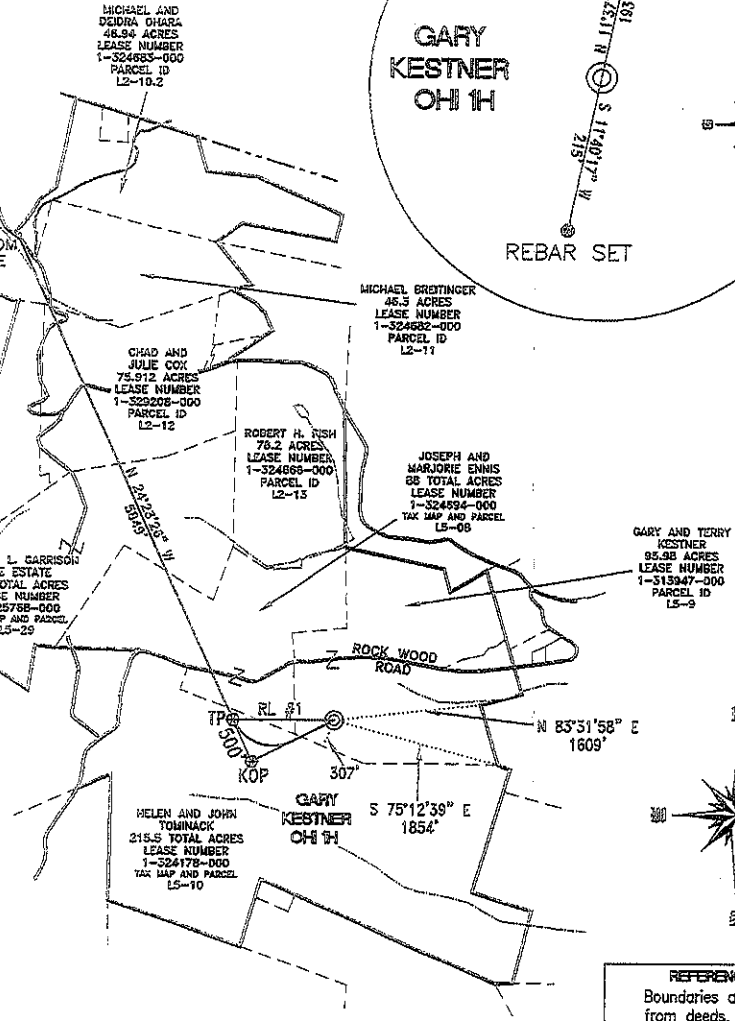
Longitude: 80° 30' 00"

SURFACE HOLE DEC. LAT: 40.148658
 SURVEYED LAT: 40° 08' 55.2"

TOP HOLE (UTM 68)
 N) 4444357.9
 E) 539073.6
 BOTTOM HOLE (UTM 68)
 N) 4445962.5
 E) 537974.9



TOP HOLE (NAD 83) N) 602193.4 E) 1677425.5 LAT.) 40°08'55.2" LONG.) 80°32'29.0" DEC. LAT.) 40.148658 DEC. LONG.) 80.541250	KOP (NAD 83) N) 601737.2 E) 1676529.4 LAT.) 40°08'50.5" LONG.) 80°32'40.0" DEC. LAT.) 40.147377 DEC. LONG.) 80.544437
TOP HOLE (NAD 27) N) 602156.4 E) 1708860.0 LAT.) 40°08'55.0" LONG.) 80°32'29.2" DEC. LAT.) 40.148586 DEC. LONG.) 80.541457	KOP (NAD 27) N) 601700.1 E) 1707963.6 LAT.) 40°08'50.3" LONG.) 80°32'40.7" DEC. LAT.) 40.147505 DEC. LONG.) 80.544643
TP (NAD 83) N) 602192.6 E) 1676322.9 LAT.) 40°08'55.3" LONG.) 80°32'42.7" DEC. LAT.) 40.148621 DEC. LONG.) 80.545194	BOTTOM HOLE (NAD 83) N) 607519.5 E) 1673907.6 LAT.) 40°09'47.4" LONG.) 80°33'14.6" DEC. LAT.) 40.163165 DEC. LONG.) 80.554057
TP (NAD 27) N) 602155.5 E) 1707757.2 LAT.) 40°08'54.8" LONG.) 80°32'43.4" DEC. LAT.) 40.148548 DEC. LONG.) 80.545400	BOTTOM HOLE (NAD 27) N) 607482.4 E) 1705342.0 LAT.) 40°09'47.1" LONG.) 80°33'15.3" DEC. LAT.) 40.163093 DEC. LONG.) 80.554263



REFERENCE LINES
 RL #1
 S 89°57'18" W 1103'

REFERENCE NOTES
 Boundaries as shown taken from deeds, tax maps and field locations. A full boundary survey is not expressed nor implied. All bearings are based on true north. Ownership taken from public records OHIO County, West Virginia FEBRUARY 2011 State Plane Coordinates & NAD 83 Lat/Long by differential submeter mapping grade GPS Drafted by: E.A.M.

FILE #: CHE 049
 DRAWING #: 1858
 SCALE: 1" = 2000'
 MINIMUM DEGREE OF ACCURACY: 1/200
 PROVEN SOURCE SUBMETER MAPPING OF ELEVATION: GRADE GPS

I, THE UNDERSIGNED, HEREBY CERTIFY THAT THIS PLAT IS CORRECT TO THE BEST OF MY KNOWLEDGE AND BELIEF AND SHOWS ALL THE INFORMATION REQUIRED BY LAW AND THE REGULATIONS ISSUED AND PRESCRIBED BY THE DEPARTMENT OF ENVIRONMENTAL PROTECTION.
 Signed:
 L.L.S. #2124: Ernest J. Benchek III

(+) DENOTES LOCATION OF WELL ON UNITED STATES TOPOGRAPHIC MAPS WVDEP
 OFFICE OF OIL & GAS
 601 57TH STREET
 CHARLESTON, WV 25304

DATE: DECEMBER 08, 2011
 OPERATOR'S WELL #: GARY KESTNER OHI 1H
 API WELL #: 47 69 00100 H&A
 STATE COUNTY PERMIT

Well Type: Oil Waste Disposal Production Deep Gas Liquid Injection Storage Shallow

WATERSHED: UPPER OHIO SOUTH ELEVATION: 1,290'
 COUNTY/DISTRICT: OHIO / LIBERTY QUADRANGLE: BETHANY, WV
 SURFACE OWNER: GARY AND TERRY KESTNER ACREAGE: 95.98 +/-
 OIL & GAS ROYALTY OWNER: GARY AND TERRY KESTNER ACREAGE: 486.22 +/-
 LEASE NUMBERS:

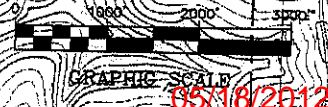
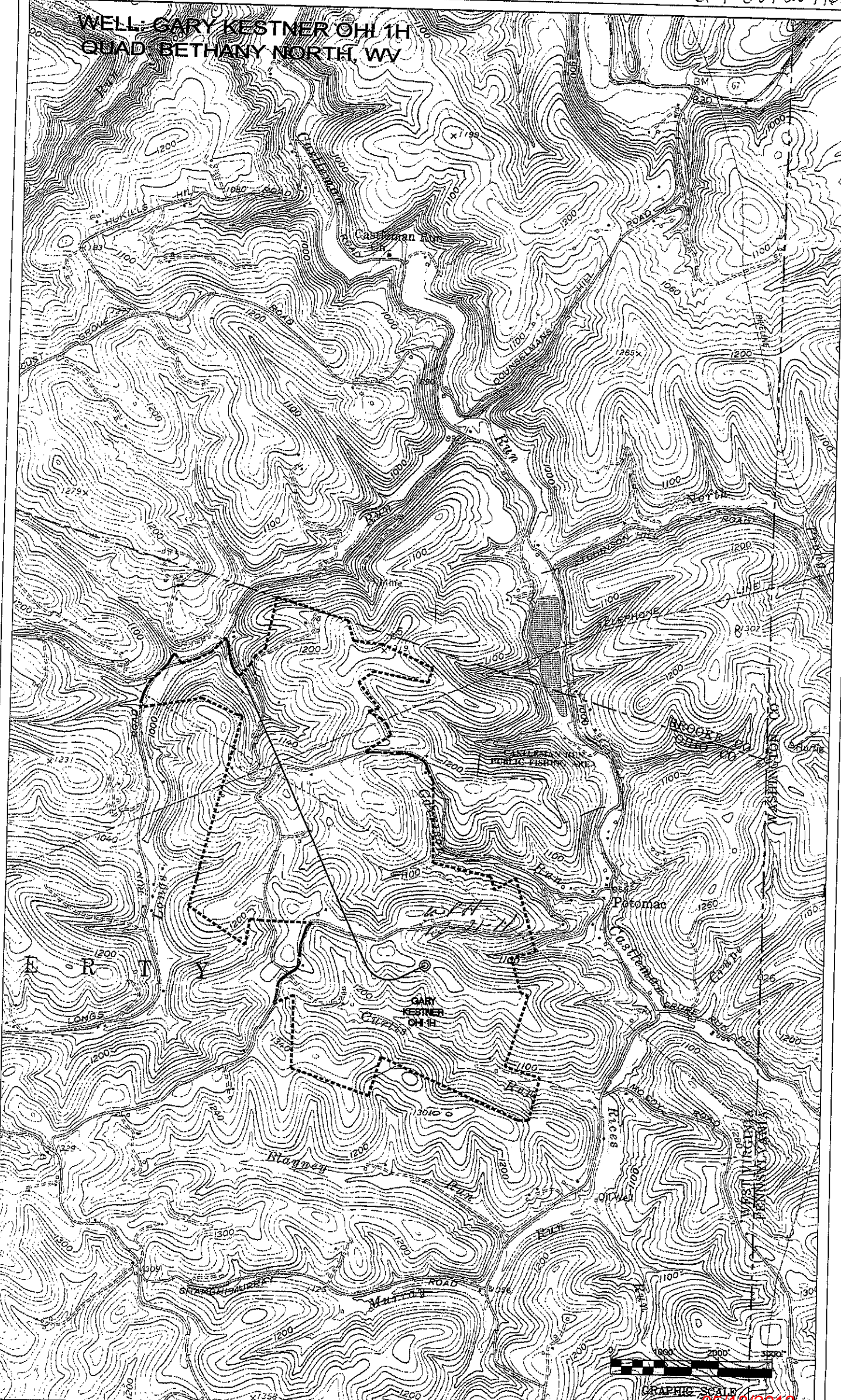
DRILL CONVERT DRILL DEEPER REDRILL FRACTURE OR STIMULATE
 PLUG OFF FORMATION PERFORATE NEW FORMATION PLUG & ABANDON
 CLEAN OUT & REPLUG OTHER CHANGE (SPECIFY):

TARGET FORMATION: MARCELLUS ESTIMATED DEPTH: TVD: 6,450' TMD: 12,699'
 WELL OPERATOR: CHESAPEAKE APPALACHIA, LLC. DESIGNATED AGENT: ERIC GILLESPIE
 ADDRESS: PO BOX 18496 ADDRESS: PO BOX 6070
 CITY: OKLAHOMA CITY STATE: OK ZIP CODE: 73154-0496 CITY: CHARLESTON STATE: WV ZIP CODE: 25301

05/18/2012

69-00120464

WELL: GARY KESTNER OH 1H
QUAD BETHANY NORTH, WV



05/18/2012