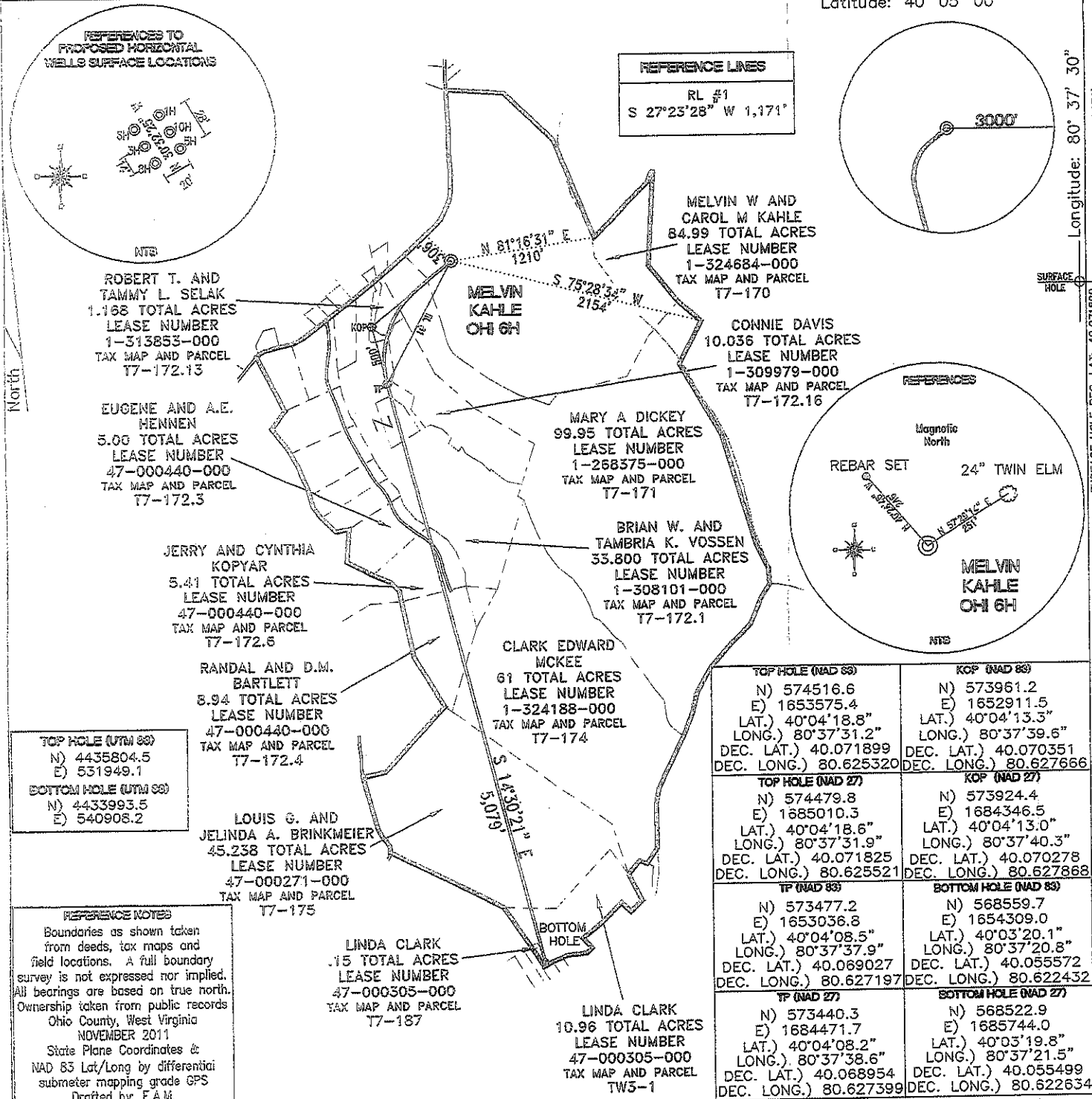


SURFACE HOLE DEC. LONG: 80.525320
SURVEYED LONG: 80° 37' 31.2" 90'
Latitude: 40° 05' 00"



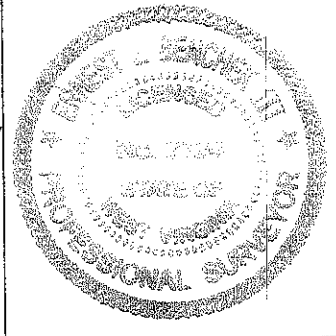
TOP HOLE (UTM 88)
N) 4435804.5
E) 531949.1
BOTTOM HOLE (UTM 88)
N) 4433993.5
E) 540908.2

REFERENCE NOTES
Boundaries as shown taken from deeds, tax maps and field locations. A full boundary survey is not expressed nor implied. All bearings are based on true north. Ownership taken from public records Ohio County, West Virginia NOVEMBER 2011 State Plane Coordinates & NAD 83 Lat/Long by differential submeter mapping grade GPS Drafted by: E.A.M.

TOP HOLE (NAD 88) N) 574516.6 E) 1653575.4 LAT.) 40°04'18.8" LONG.) 80°37'31.2" DEC. LAT.) 40.071899 DEC. LONG.) 80.625320	KOP (NAD 88) N) 573961.2 E) 1652911.5 LAT.) 40°04'13.3" LONG.) 80°37'39.6" DEC. LAT.) 40.070351 DEC. LONG.) 80.627666
TOP HOLE (NAD 27) N) 574479.8 E) 1685010.3 LAT.) 40°04'18.6" LONG.) 80°37'31.9" DEC. LAT.) 40.071825 DEC. LONG.) 80.625521	KOP (NAD 27) N) 573924.4 E) 1684346.5 LAT.) 40°04'13.0" LONG.) 80°37'40.3" DEC. LAT.) 40.070278 DEC. LONG.) 80.627868
TP (NAD 88) N) 573477.2 E) 1653036.8 LAT.) 40°04'08.5" LONG.) 80°37'37.9" DEC. LAT.) 40.069027 DEC. LONG.) 80.627197	BOTTOM HOLE (NAD 88) N) 568559.7 E) 1654309.0 LAT.) 40°03'20.1" LONG.) 80°37'20.8" DEC. LAT.) 40.055572 DEC. LONG.) 80.622432
TP (NAD 27) N) 573440.3 E) 1684471.7 LAT.) 40°04'08.2" LONG.) 80°37'38.6" DEC. LAT.) 40.068954 DEC. LONG.) 80.627399	BOTTOM HOLE (NAD 27) N) 568522.9 E) 1685744.0 LAT.) 40°03'19.8" LONG.) 80°37'21.5" DEC. LAT.) 40.055499 DEC. LONG.) 80.622634

FILE #: CHE 035
DRAWING #: 1925
SCALE: 1"=1200'
MINIMUM DEGREE OF ACCURACY: 1/200
PROVEN SOURCE SUBMETER MAPPING OF ELEVATION: GRADE GPS

I, THE UNDERSIGNED, HEREBY CERTIFY THAT THIS PLAT IS CORRECT TO THE BEST OF MY KNOWLEDGE AND BELIEF AND SHOWS ALL THE INFORMATION REQUIRED BY LAW AND THE REGULATIONS ISSUED AND PRESCRIBED BY THE DEPARTMENT OF ENVIRONMENTAL PROTECTION.
Signed:
L.L.S. #2124 : Ernest J. Benchek III



(+) DENOTES LOCATION OF WELL ON UNITED STATES TOPOGRAPHIC MAPS
WVDEP
OFFICE OF OIL & GAS
601 5TH STREET
CHARLESTON, WV 25304

Well Type: Oil Waste Diposal Production Deep
 Gas Liquid Injection Storage Shallow

WATERSHED: UPPER OHIO SOUTH ELEVATION : 1,280'

COUNTY/DISTRICT: OHIO/TRIADELPHIA QUADRANGLE: WHEELING WV.

SURFACE OWNER: MELVIN W AND CAROL M KAHLE ACREAGE: 84.99 +/-

OIL & GAS ROYALTY OWNER: MELVIN W AND CAROL M KAHLE ACREAGE: 255.58 +/-

LEASE NUMBERS:

DRILL CONVERT DRILL DEEPER REDRILL FRACTURE OR STIMULATE
PLUG OFF FORMATION PERFORATE NEW FORMATION PLUG & ABANDON
CLEAN OUT & REPLUG OTHER CHANGE (SPECIFY):

TARGET FORMATION: MARCELLUS ESTIMATED DEPTH: TVD: 6,265' TMD: 11,566'
WELL OPERATOR : CHESAPEAKE APPALACHIA, LLC. DESIGNATED AGENT : ERIC B. GILLESPIE
ADDRESS: PO BOX 18496 ADDRESS: Po Box 6070
CITY: OKLAHOMA CITY STATE: OK ZIP CODE: 73154-0496 CITY: CHARLESTON STATE: WV 05/25/2012 01

DATE: DECEMBER 20, 2011
OPERATOR'S WELL #: MELVIN KAHLE OHI 6H
API WELL #: 47 69 00125H6A
STATE COUNTY PERMIT

