

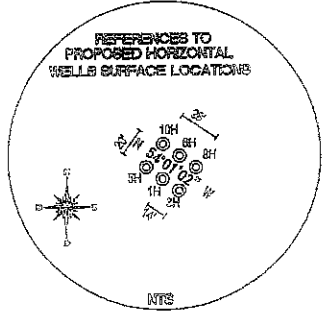
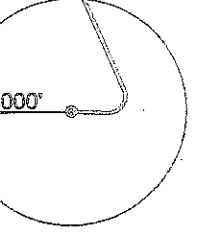
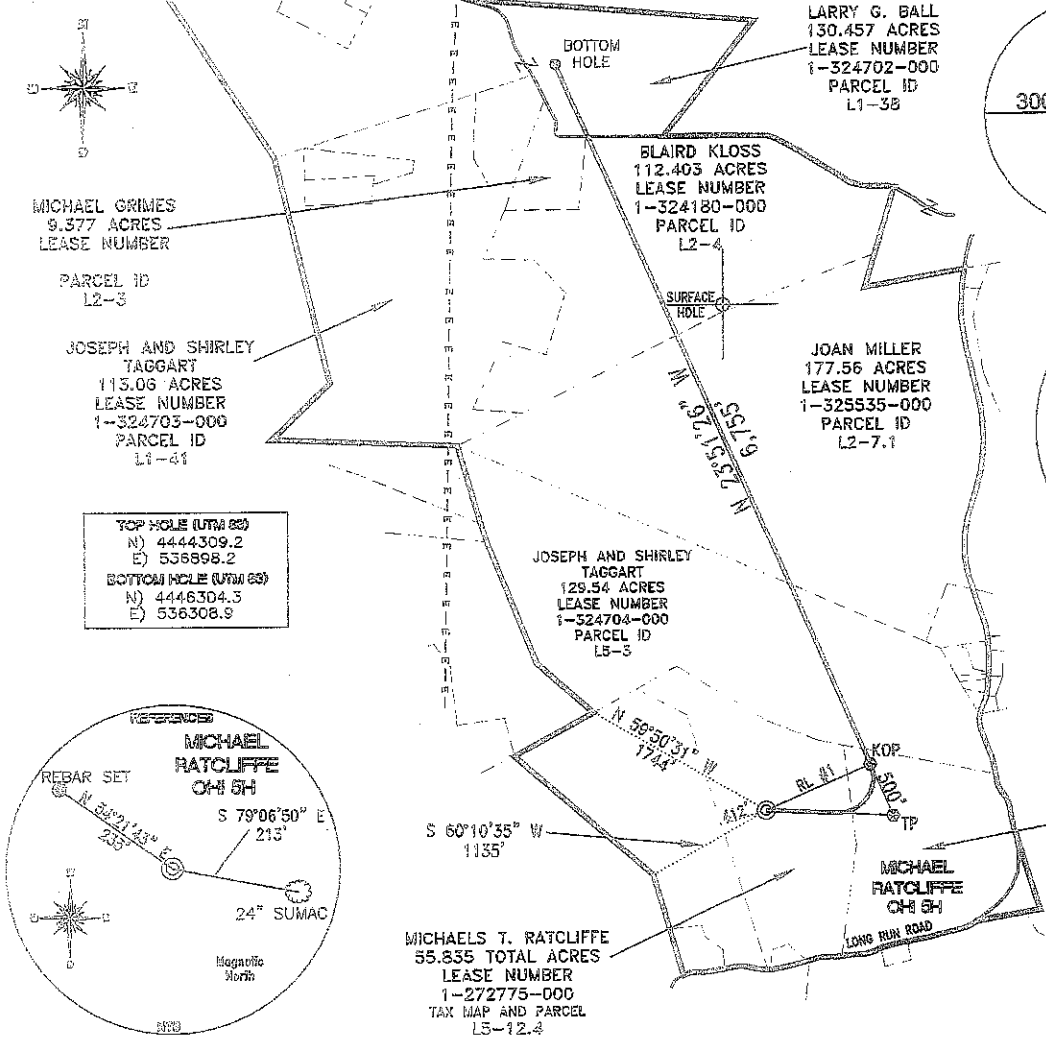
69-00135

Latitude: 40° 10' 00" (NAD 27)

<p>TOP HOLE (NAD 83)</p> <p>N) 602153.3 E) 1670263.6 LAT.) 40°08'53.9" LONG.) 80°34'00.5" DEC. LAT.) 40.148318 DEC. LONG.) 80.566794</p>	<p>KOP (NAD 83)</p> <p>N) 602097.7 E) 1671394.0 LAT.) 40°08'53.5" LONG.) 80°33'46.2" DEC. LAT.) 40.148202 DEC. LONG.) 80.562820</p>	<p>TP (NAD 83)</p> <p>N) 602554.9 E) 1671191.7 LAT.) 40°08'58.0" LONG.) 80°33'48.6" DEC. LAT.) 40.149450 DEC. LONG.) 80.563563</p>	<p>BOTTOM HOLE (NAD 83)</p> <p>N) 608732.8 E) 1668459.5 LAT.) 40°09'58.7" LONG.) 80°34'25.0" DEC. LAT.) 40.166318 DEC. LONG.) 80.573600</p>
<p>TOP HOLE (NAD 27)</p> <p>N) 602116.3 E) 1701718.1 LAT.) 40°08'53.7" LONG.) 80°34'01.2" DEC. LAT.) 40.148246 DEC. LONG.) 80.567000</p>	<p>KOP (NAD 27)</p> <p>N) 602050.6 E) 1702828.4 LAT.) 40°08'53.3" LONG.) 80°33'46.9" DEC. LAT.) 40.148129 DEC. LONG.) 80.563026</p>	<p>TP (NAD 27)</p> <p>N) 602517.9 E) 1702626.2 LAT.) 40°08'57.8" LONG.) 80°33'49.6" DEC. LAT.) 40.149378 DEC. LONG.) 80.563769</p>	<p>BOTTOM HOLE (NAD 27)</p> <p>N) 608695.8 E) 1699894.0 LAT.) 40°09'58.5" LONG.) 80°34'25.7" DEC. LAT.) 40.166246 DEC. LONG.) 80.573805</p>

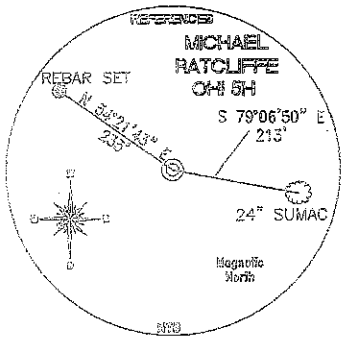
Longitude: 80° 32' 30" (NAD 27)

SURFACE HOLE DEC. LAT: 40.148246  
SURVEYED LAT: 40° 08' 03.7"



REFERENCE LINES	
RL #1	N 66°08'32" E 993'

TOP HOLE (UTM 83)	N) 4444309.2 E) 536898.2
BOTTOM HOLE (UTM 83)	N) 4446304.3 E) 536308.9



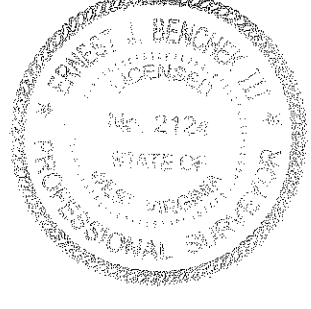
**REFERENCE NOTES**  
Boundaries as shown taken from deeds, tax maps and field locations. A full boundary survey is not expressed nor implied. All bearings are based on true north. Ownership taken from public records Ohio County, West Virginia JUNE 2011  
State Plane Coordinates & NAD 83 Lat/Long by differential submeter mapping grade GPS  
Drafted by: E.A.M.

FILE #: CHE 040  
DRAWING #: 1539  
SCALE: 1"=1600'  
MINIMUM DEGREE OF ACCURACY: 1/200  
PROVEN SOURCE OF ELEVATION: SUBMETER MAPPING GRADE GPS

I, THE UNDERSIGNED, HEREBY CERTIFY THAT THIS PLAT IS CORRECT TO THE BEST OF MY KNOWLEDGE AND BELIEF AND SHOWS ALL THE INFORMATION REQUIRED BY LAW AND THE REGULATIONS ISSUED AND PRESCRIBED BY THE DEPARTMENT OF ENVIRONMENTAL PROTECTION.

Signed:

L.L.S. #2124 : Ernest J. Benckek III



(+) DENOTES LOCATION OF WELL ON UNITED STATES TOPOGRAPHIC MAPS  
WVDEP  
OFFICE OF OIL & GAS  
601 5TH STREET  
CHARLESTON, WV 25304

Well Type:  Oil  Waste Disposal  Production  Deep  
 Gas  Liquid Injection  Storage  Shallow

WATERSHED: UPPER OHIO SOUTH ELEVATION: 1,285'

COUNTY/DISTRICT: OHIO/LIBERTY QUADRANGLE: BETHANY WV.

SURFACE OWNER: MICHAEL T. RATCLIFFE ACREAGE: 55.835 +/-

OIL & GAS ROYALTY OWNER: MICHAEL T. RATCLIFFE ACREAGE: 661.422 +/-

LEASE NUMBERS:

DRILL  CONVERT  DRILL DEEPER  REDRILL  FRACTURE OR STIMULATE   
PLUG OFF FORMATION  PERFORATE NEW FORMATION  PLUG & ABANDON   
CLEAN OUT & REPLUG  OTHER CHANGE  (SPECIFY):

TARGET FORMATION: MARCELLUS ESTIMATED DEPTH: TVD: 6,325' TVD: 13,511'

WELL OPERATOR : CHESAPEAKE APPALACHIA, LLC. DESIGNATED AGENT : ERIC B. GILLESPIE  
ADDRESS: PO BOX 18496 ADDRESS: Po Box 6070  
CITY: OKLAHOMA CITY STATE: OK ZIP CODE: 73154-0496 CITY: CHARLESTON STATE: WV ZIP CODE: 25301

DATE: FEBRUARY 07, 2012  
OPERATOR'S WELL #: MICHAEL RATCLIFFE OHI SH  
API WELL #: 47 69 00135 H6A  
STATE COUNTY PERMIT

07/06/2012

WELL: MICHAEL RATCLIFFE OHI 5H  
QUAD: BETHANY WV

