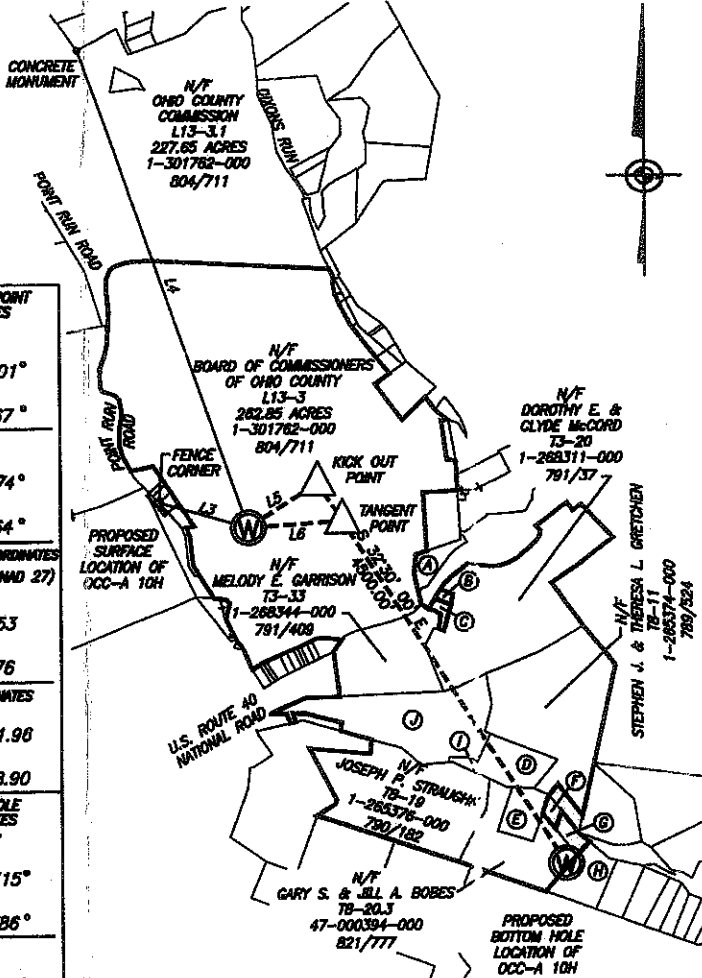


OCC-A OHI 10H

LEASES

- (A) 1-313881-000 813/190
- (B) OPEN AS OF 2/22/2012
- (C) OPEN AS OF 2/22/2012
- (D) 47-000160-000 817/176
- (E) 47-000394-000 821/777
- (F) 47-001294-000
- (G) 47-000468-000 818/652
- (H) 1-264342-000 796/56
- (I) 1-308108-000 806/227
- (J) 1-268402-000 792/320

WELL NO. 10H COORDINATES NAD 27 True Latitude: 40.079430° True Longitude: 80.598243° NAD 83 True Latitude: 40.079503° True Longitude: 80.598040° STATE PLANE COORDINATES (NORTH ZONE NAD 27) Northing: 577155.36 Easting: 1692677.98 UTM COORDINATES Northing: 4436658.78 Easting: 534271.45	KICK OUT POINT COORDINATES NAD 27 True Latitude: 40.080801° True Longitude: 80.595567° NAD 83 True Latitude: 40.080874° True Longitude: 80.595364° STATE PLANE COORDINATES (NORTH ZONE NAD 27) Northing: 577645.53 Easting: 1693432.76 UTM COORDINATES Northing: 4436811.96 Easting: 534498.90
TANGENT POINT COORDINATES NAD 27 True Latitude: 40.079652° True Longitude: 80.594589° NAD 83 True Latitude: 40.079726° True Longitude: 80.594385° STATE PLANE COORDINATES (NORTH ZONE NAD 27) Northing: 577223.83 Easting: 1693701.40 UTM COORDINATES Northing: 4436684.86 Easting: 534582.89	BOTTOM HOLE COORDINATES NAD 27 True Latitude: 40.089315° True Longitude: 80.585786° NAD 83 True Latitude: 40.089388° True Longitude: 80.585582° STATE PLANE COORDINATES (NORTH ZONE NAD 27) Northing: 573428.55 Easting: 1696119.18 UTM COORDINATES Northing: 4435540.97 Easting: 535338.84



- LATITUDE 40°05'00"
- LONGITUDE 80°35'00"
- (A) JDS INVESTMENTS, LLC T3-16
 - (B) FRED E. WILSON III T3-20.2
 - (C) RAYMOND E. SHARPSKY T3-20.3
 - (D) KENNETH L. MURPHY T8-10
 - (E) GARY S. & JILL A. BOBES T8-20
 - (F) JOHN A. PIFFKO, JR. T8-20.1
 - (G) THERESA MITCHEM T8-20.2
 - (H) FRANCES F. DARRAH T8-21
 - (I) PAUL R. & C.G. TEMPLIN T8-9.1
 - (J) UNITED PRESBYTERIAN CHURCH T8-9

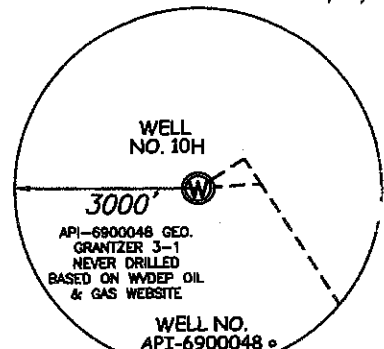
DIRECTIONS TO SITE

IN RONEYS POINT, WV (IN OHIO CO), FROM THE INTERSECTION OF US RT 40 AND DALLAS PIKE, GO NORTHWEST ON DALLAS PIKE FOR ABOUT 250 FEET; DALLAS PIKE BENDS SLIGHTLY RIGHT AND BECOMES RONEYS POINT RUN RD. CONTINUE ON RONEYS POINT RUN RD FOR ABOUT 0.9 MILES TO CO FARM RD. TURN RIGHT ON CO FARM RD AND GO ABOUT 0.3 MILES TO THE PROPOSED WELL SITE ACCESS ROAD ON THE RIGHT.

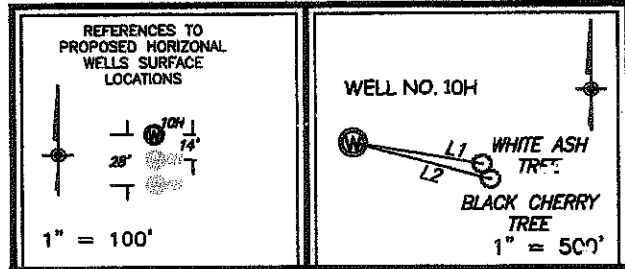
NOTES ON SURVEY

- TIES TO WELLS AND CORNERS ARE BASED ON GRID NORTH FOR THE WV STATE PLANE COORDINATE SYSTEM NORTH ZONE NAD '27.
- SURFACE OWNER AND ADJOINER INFORMATION TAKEN FROM THE ASSESSOR AND COUNTY CLERK RECORDS OF OHIO COUNTY IN MAY, 2010.
- WELL LAT./LONG. (NAD'27) ESTABLISHED BY DUAL FREQ STATIC GPS WITH NGS OPUS SOLUTION.

LINE	BEARING	DISTANCE
L1	S 80°27'57" E	249.4'
L2	S 74°47'47" E	270.6'
L3	N 73°45'08" W	1013.5'
L4	N 19°05'57" W	5617.4'
L5	N 57°00'00" E	900.0'
L6	N 86°10'19" W	1025.7'

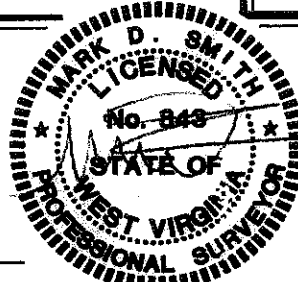


REFERENCES



GREENWAY ENGINEERING, INC.

I THE UNDERSIGNED, HEREBY CERTIFY THAT THIS PLAT IS CORRECT TO THE BEST OF MY KNOWLEDGE AND BELIEF AND SHOWS ALL THE INFORMATION REQUIRED BY LAW AND THE REGULATIONS ISSUED AND PRESCRIBED BY THE DIVISION OF ENVIRONMENTAL PROTECTION.



(+) DENOTES LOCATION OF WELL ON UNITED STATES TOPOGRAPHIC MAPS.

DATE JUNE 08 , 20 10
 REV. FEBRUARY 23 , 20 12

OPERATORS WELL NO. OCC-A OHI 10H
 API WELL NO. 47-069-0137H6A
 STATE COUNTY PERMIT

MINIMUM DEGREE OF ACCURACY 1/200 FILE NO. OCC-A 10H
 PROVEN SOURCE OF ELEVATION DUAL FREQ STATIC GPS WITH NGS OPUS SOLUTION SCALE 1" = 2,000'

STATE OF WEST VIRGINIA
 DIVISION OF ENVIRONMENTAL PROTECTION
 OFFICE OF OIL AND GAS

WELL TYPE: OIL GAS LIQUID INJECTION WASTE DISPOSAL F "GAS" PRODUCTION STORAGE DEEP SHALLOW

LOCATION: ELEVATION 1099.5' WATERSHED WHEELING CREEK
 DISTRICT TRIADELPHIA PO COUNTY OHIO QUADRANGLE VALLEY GROVE 7.5
 SURFACE OWNER: THE BOARD OF COMMISSIONERS OF THE COUNTY OF OHIO ACREAGE 263.6 +/-
 ROYALTY OWNER: THE BOARD OF COMMISSIONERS OF THE COUNTY OF OHIO LEASE ACREAGE 263.6 +/-
 PROPOSED WORK: LEASE NO. _____
 DRILL CONVERT DRILL DEEPER REDRILL FRACTURE OR STIMULATE PLUG OFF OLD
 FORMATION PERFORATE NEW FORMATION PLUG AND ABANDON CLEAN OUT AND REPLUG OTHER
 PHYSICAL CHANGE IN WELL (SPECIFY) _____ TARGET FORMATION MARCELLUS
 ESTIMATED DEPTH TMD=11,070' TVD 6,200'

WELL OPERATOR CHESAPEAKE APPALACHIA, L.L.C. DESIGNATED AGENT ERIC B. GILLESPIE
 ADDRESS P.O. BOX 18496 OKLAHOMA CITY, OK 73154-0496 ADDRESS P.O. BOX 6070 CHARLESTON, WV 25301

