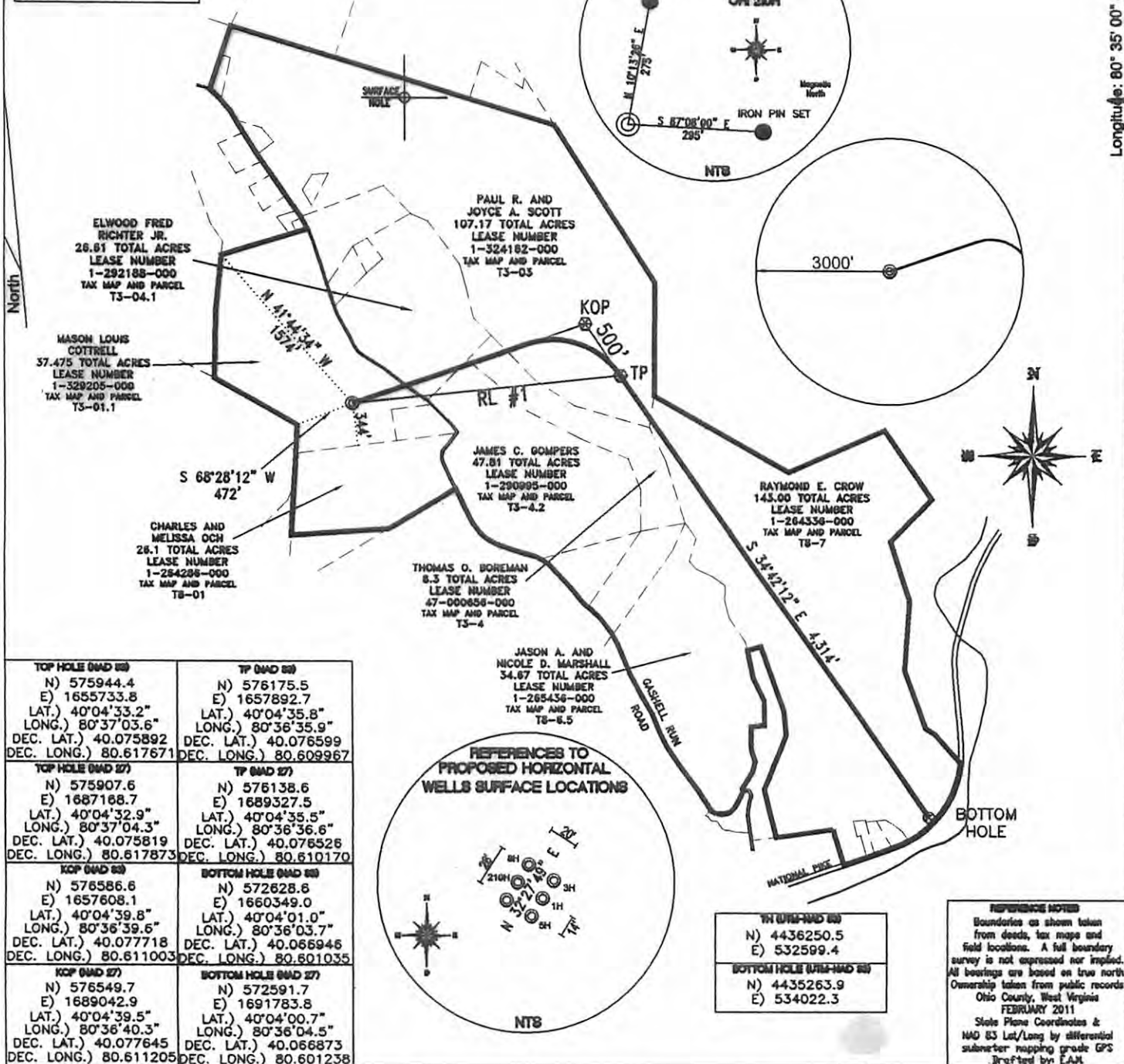
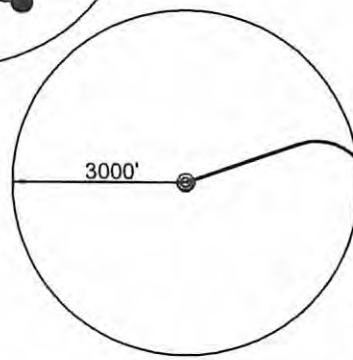
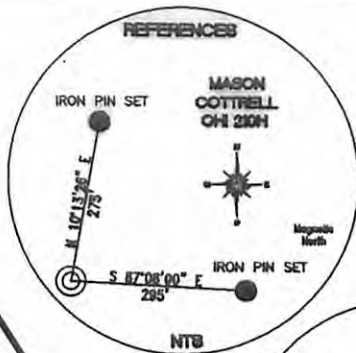
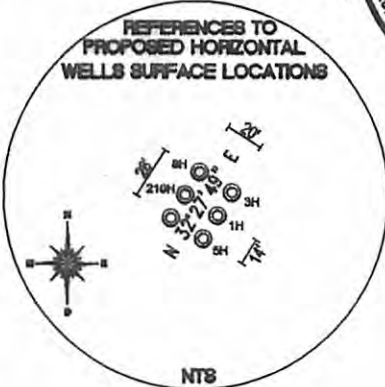


REFERENCE LINES	
RL #1	N 83°53'26" E 2,171'



TOP HOLE (MAD 88) N) 575944.4 E) 1655733.8 LAT.) 40°04'33.2" LONG.) 80°37'03.6" DEC. LAT.) 40.075892 DEC. LONG.) 80.617671	TP (MAD 88) N) 576175.5 E) 1657892.7 LAT.) 40°04'35.8" LONG.) 80°36'35.9" DEC. LAT.) 40.076599 DEC. LONG.) 80.609967
TOP HOLE (MAD 87) N) 575907.6 E) 1687168.7 LAT.) 40°04'32.9" LONG.) 80°37'04.3" DEC. LAT.) 40.075819 DEC. LONG.) 80.617873	TP (MAD 87) N) 576138.6 E) 1689327.5 LAT.) 40°04'35.5" LONG.) 80°36'36.6" DEC. LAT.) 40.076526 DEC. LONG.) 80.610170
KOP (MAD 88) N) 576586.6 E) 1657608.1 LAT.) 40°04'39.8" LONG.) 80°36'39.6" DEC. LAT.) 40.077718 DEC. LONG.) 80.611003	BOTTOM HOLE (MAD 88) N) 572628.6 E) 1660349.0 LAT.) 40°04'01.0" LONG.) 80°36'03.7" DEC. LAT.) 40.066946 DEC. LONG.) 80.601035
KOP (MAD 87) N) 576549.7 E) 1689042.9 LAT.) 40°04'39.5" LONG.) 80°36'40.3" DEC. LAT.) 40.077645 DEC. LONG.) 80.611205	BOTTOM HOLE (MAD 87) N) 572591.7 E) 1691783.8 LAT.) 40°04'00.7" LONG.) 80°36'04.5" DEC. LAT.) 40.066873 DEC. LONG.) 80.601238



TH (MAD 88) N) 4436250.5 E) 532599.4
BOTTOM HOLE (MAD 88) N) 4435263.9 E) 534022.3

REFERENCE NOTES
Boundaries as shown taken from deeds, tax maps and field locations. A full boundary survey is not expressed nor implied. Ownership taken from public records Ohio County, West Virginia FEBRUARY 2011
State Plane Coordinates & NAD 83 Lat/Long by differential submeter mapping grade GPS drafted by EAM

FILE #: CHE 060
DRAWING #: 2023
SCALE: 1"=1200'
MINIMUM DEGREE OF ACCURACY: 1/200
PROVEN SOURCE OF ELEVATION: SUBMETER MAPPING GRADE GPS

I, THE UNDERSIGNED, HEREBY CERTIFY THAT THIS PLAT IS CORRECT TO THE BEST OF MY KNOWLEDGE AND BELIEF AND SHOWS ALL THE INFORMATION REQUIRED BY LAW AND THE REGULATIONS ISSUED AND PRESCRIBED BY THE DEPARTMENT OF ENVIRONMENTAL PROTECTION.
Signed:
L.L.S. #2124 : Ernest J. Benchek III



(+) DENOTES LOCATION OF WELL ON UNITED STATES TOPOGRAPHIC MAPS
WVDEP
OFFICE OF OIL & GAS
601 57TH STREET
CHARLESTON, WV 25304

DATE: MARCH 01, 2012
OPERATOR'S WELL #: MASON COTTRELL OHI 210H
API WELL #: 47 69 00139H6A
STATE COUNTY PERMIT
CANCELLED

Well Type: Oil Waste Diposal Production Deep
 Gas Liquid Injection Storage Shallow

WATERSHED: UPPER OHIO SOUTH ELEVATION: 1,300'
COUNTY/DISTRICT: OHIO/TRIADELPHIA QUADRANGLE: VALLEY GROVE WV.
SURFACE OWNER: MASON LOUIS COTTRELL ACREAGE: 37.475 +/-
OIL & GAS ROYALTY OWNER: MASON LOUIS COTTRELL ACREAGE: 573.315 +/-
LEASE NUMBERS:

DRILL CONVERT DRILL DEEPER REDRILL FRACTURE OR STIMULATE
PLUG OFF FORMATION PERFORATE NEW FORMATION PLUG & ABANDON
CLEAN OUT & REPLUG OTHER CHANGE (SPECIFY):

TARGET FORMATION: MARCELLUS ESTIMATED DEPTH: TVD: 6,320' TMD: 11,440'
WELL OPERATOR : CHESAPEAKE APPALACHIA, LLC. DESIGNATED AGENT : ERIC B. GILLESPIE
ADDRESS: PO BOX 18496 ADDRESS: Po Box 6070
CITY: OKLAHOMA CITY STATE: OK ZIP CODE: 73154-0496 CITY: CHARLESTON STATE: WV ZIP CODE: 25301

09/05/2014