

OCC-B OHI 210H

LINE	BEARING	DISTANCE
L1	N 84°14'10" E	1985.6'
L2	N 69°48'42" E	1901.5'
L3	S 82°58'28" W	1802.1'
L4	N 25°32'33" E	2358.5'

ADJOINERS/LEASES:

- (A) DAVID B. & L.M. MAIN
R6-10.1
1-324187-000 779-134
- (B) MARK W. KETTLER
R9-5.1
47-000773-000 826-132
- (C) MARK W. KETTLER
R9-7
47-000733-000 826-132
- (D) HELEN M. PERRY
R9-14.1
47-000495-000 822-497
- (E) HELEN M. PERRY
R9-14.2
47-000495-000 822-497
- (F) MARC SEAMON
R6-37.1
1-324195-000 781-534
- (G) PAMELA S. LOUGH
R6-19.1
OPEN
- (H) JAMES & LEONA A. TODD
R6-19.3
OPEN

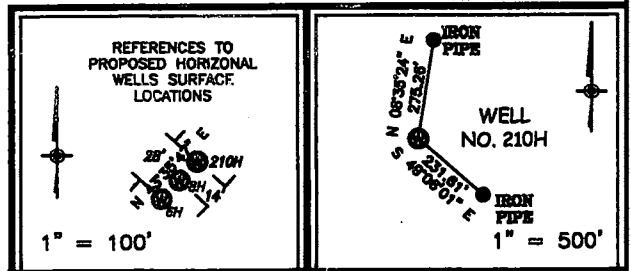
DIRECTIONS TO SITE

FROM INTERSECTION OF SHORT CREEK RD AND NORTH FORK SHORT CREEK RD, GO ± 0.4 MILES EAST ON NORTH FORK SHORT CREEK RD, THEN NORTH ON AN UNNAMED RURAL RD FOR 0.98 MILES TO THE OCC-B WELL PAD ACCESS ROAD ON THE LEFT.

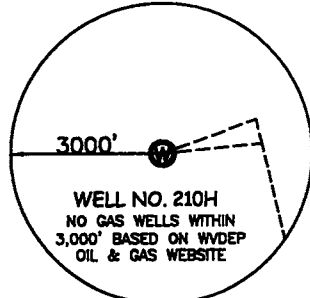
NOTES ON SURVEY

- TIES TO WELLS AND CORNERS ARE BASED ON GRID NORTH FOR THE WV STATE PLANE COORDINATE SYSTEM NORTH ZONE NAD '27.
- SURFACE OWNER AND ADJOINER INFORMATION TAKEN FROM THE ASSESSOR AND COUNTY CLERK RECORDS OF OHIO COUNTY IN MAY, 2010.
- WELL LAT./LONG. (NAD'27) ESTABLISHED BY DUAL FREQ STATIC GPS WITH NGS OPUS SOLUTION.

REFERENCES

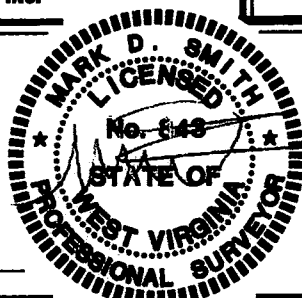


WELL NO. 5H COORDINATES NAD 27 True Latitude: NORTH 40.163158° True Longitude: WEST 80.643141° NAD 83 True Latitude: NORTH 40.163229° True Longitude: WEST 80.642939° STATE PLANE COORDINATES (NORTH ZONE NAD 27) Northing: 607809.87 Easting: 1680502.95 UTM COORDINATES Northing: 4445935.47 Easting: 530405.92	KICK OUT POINT COORDINATES NAD 27 True Latitude: NORTH 40.165108° True Longitude: WEST 80.638484° NAD 83 True Latitude: NORTH 40.165179° True Longitude: WEST 80.638283° STATE PLANE COORDINATES (NORTH ZONE NAD 27) Northing: 608496.61 Easting: 1682372.28 UTM COORDINATES Northing: 4446154.22 Easting: 530971.91
TANGENT POINT COORDINATES NAD 27 True Latitude: NORTH 40.163777° True Longitude: WEST 80.638047° NAD 83 True Latitude: NORTH 40.163849° True Longitude: WEST 80.635845° STATE PLANE COORDINATES (NORTH ZONE NAD 27) Northing: 608010.28 Easting: 1682488.40 UTM COORDINATES Northing: 4446008.66 Easting: 531009.77	BOTTOM HOLE COORDINATES NAD 27 True Latitude: NORTH 40.145677° True Longitude: WEST 80.630099° NAD 83 True Latitude: NORTH 40.145749° True Longitude: WEST 80.629897° STATE PLANE COORDINATES (NORTH ZONE NAD 27) Northing: 601396.20 Easting: 1684067.60 UTM COORDINATES Northing: 4443999.77 Easting: 531524.61



GREENWAY ENGINEERING, INC.

I THE UNDERSIGNED, HEREBY CERTIFY THAT THIS PLAT IS CORRECT TO THE BEST OF MY KNOWLEDGE AND BELIEF AND SHOWS ALL THE INFORMATION REQUIRED BY LAW AND THE REGULATIONS ISSUED AND PRESCRIBED BY THE DIVISION OF ENVIRONMENTAL PROTECTION.



P.S. 843 *[Signature]* 02-27-2012

(+) DENOTES LOCATION OF WELL ON UNITED STATES TOPOGRAPHIC MAPS.
 DATE JUNE 08, 20 10
 REV. FEBRUARY 27, 20 12
 OPERATORS WELL NO. OCC-B OHI 210H
 API WELL NO. 47 - 069 - 00141H6A
 STATE COUNTY PERMIT

MINIMUM DEGREE OF ACCURACY 1/200 FILE NO. OCC-B210H
 PROVEN SOURCE OF ELEVATION DUAL FREQ STATIC GPS WITH NGS OPUS SOLUTION SCALE 1" = 2,000'

STATE OF WEST VIRGINIA
 DIVISION OF ENVIRONMENTAL PROTECTION
 OFFICE OF OIL AND GAS

WELL TYPE: OIL LIQUID GAS INJECTION WASTE DISPOSAL IF "GAS" PRODUCTION STORAGE DEEP SHALLOW

LOCATION: ELEVATION: 1,194.0' WATERSHED OHIO RIVER DIRECT DRAINS
 DISTRICT RICHLAND COUNTY OHIO QUADRANGLE TILTONSVILLE 7.5'
 SURFACE OWNER THE BOARD OF COMMISSIONERS OF THE COUNTY OF OHIO ACREAGE 269.895 +/-
 ROYALTY OWNER THE BOARD OF COMMISSIONERS OF THE COUNTY OF OHIO LEASE ACREAGE 269.895 +/-
 PROPOSED WORK: LEASE NO. _____
 DRILL CONVERT DRILL DEEPER REDRILL FRACTURE OR STIMULATE PLUG OFF OLD
 FORMATION PERFORATE NEW FORMATION PLUG AND ABANDON CLEAN OUT AND REPLUG OTHER
 PHYSICAL CHANGE IN WELL (SPECIFY) _____ TARGET FORMATION MARCELLUS
 ESTIMATED DEPTH 6,250' + LATERAL LENGTH _____

WELL OPERATOR CHESAPEAKE APPALACHIA, L.L.C. DESIGNATED AGENT ERIC B. GILLESPIE
 ADDRESS P.O. BOX 18498 ADDRESS P.O. BOX 6070
OKLAHOMA CITY, OK 73154-0498 CHARLESTON, WV 25301