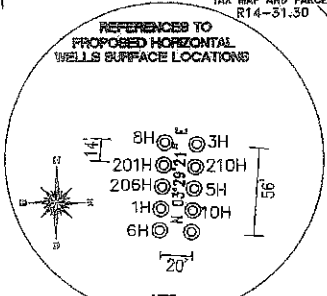
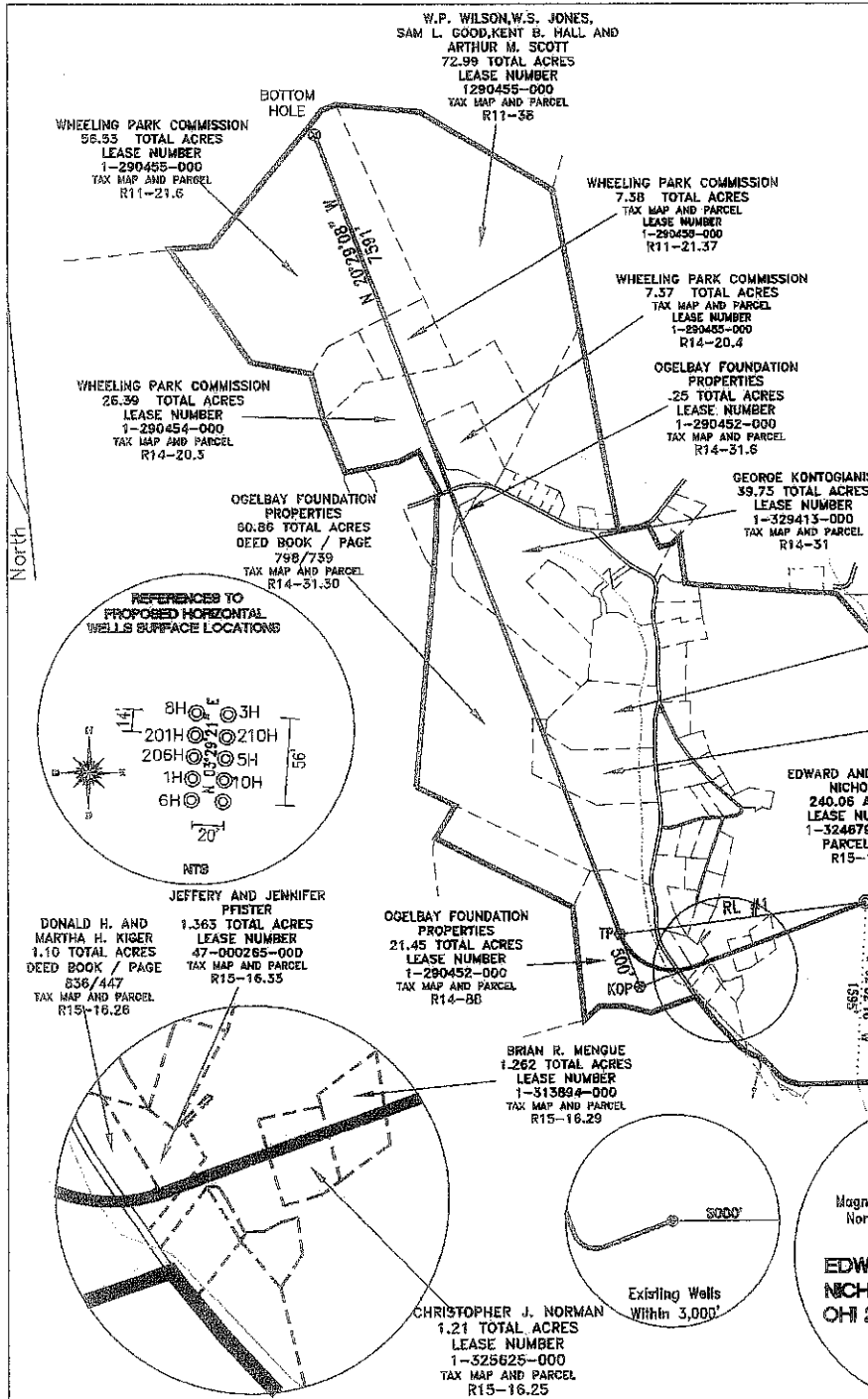


TH (NAD 83) N) 585136.1 E) 1652322.7 LAT.) 40°06'03.6" LONG.) 80°37'49.0" DEC. LAT.) 40.101005 DEC. LONG.) 80.630273	TP (NAD 83) N) 584869.5 E) 1650162.9 LAT.) 40°06'00.7" LONG.) 80°38'16.7" DEC. LAT.) 40.100198 DEC. LONG.) 80.637981
TH (NAD 27) N) 585099.3 E) 1683757.7 LAT.) 40°06'03.4" LONG.) 80°37'49.7" DEC. LAT.) 40.100932 DEC. LONG.) 80.630474	TP (NAD 27) N) 584832.7 E) 1681598.0 LAT.) 40°06'00.5" LONG.) 80°38'17.5" DEC. LAT.) 40.100126 DEC. LONG.) 80.638182
KOP (NAD 83) N) 584401.1 E) 1650337.9 LAT.) 40°05'56.1" LONG.) 80°38'14.4" DEC. LAT.) 40.098919 DEC. LONG.) 80.637334	BOTTOM HOLE (NAD 83) N) 591980.7 E) 1647506.2 LAT.) 40°07'10.6" LONG.) 80°38'52.1" DEC. LAT.) 40.119625 DEC. LONG.) 80.647802
KOP (NAD 27) N) 584364.3 E) 1681772.9 LAT.) 40°05'55.8" LONG.) 80°38'15.1" DEC. LAT.) 40.098846 DEC. LONG.) 80.637535	BOTTOM HOLE (NAD 27) N) 591943.9 E) 1678941.3 LAT.) 40°07'10.4" LONG.) 80°38'52.8" DEC. LAT.) 40.119553 DEC. LONG.) 80.648002

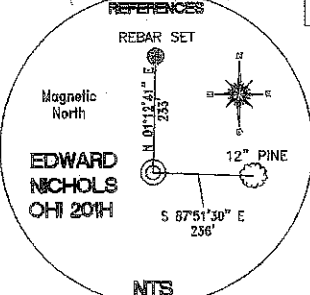


REFERENCE LINES

RL #1
S 82°57'46" W 2176'

TOP HOLE (UTM 83)
 N) 4439033.4
 E) 531513.3

BOTTOM HOLE (UTM 83)
 N) 4437345.6
 E) 531918.5

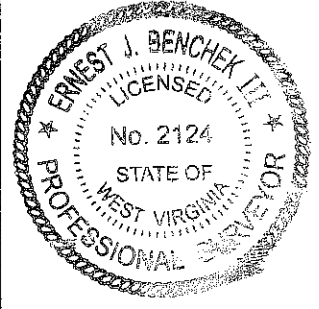


REFERENCE NOTES
 Boundaries as shown taken from deeds, tax maps and field locations. A full boundary survey is not expressed nor implied. All bearings are based on true north. Ownership taken from public records OHIO County, West Virginia DECEMBER 2011. State Plane Coordinates & NAD 83 Lat/Long by differential submeter mapping grade GPS. Drafted by: E.A.M.

FILE #: CHE 062
 DRAWING #: 1993
 SCALE: 1" = 1600'
 MINIMUM DEGREE OF ACCURACY: 1/200
 PROVEN SOURCE SUBMETER MAPPING OF ELEVATION: GRADE GPS

I, THE UNDERSIGNED, HEREBY CERTIFY THAT THIS PLAT IS CORRECT TO THE BEST OF MY KNOWLEDGE AND BELIEF AND SHOWS ALL THE INFORMATION REQUIRED BY LAW AND THE REGULATIONS ISSUED AND PRESCRIBED BY THE DEPARTMENT OF ENVIRONMENTAL PROTECTION.

Signed: _____
 L.L.S. #2124 : Ernest J. Benchek III



(+) DENOTES LOCATION OF WELL ON UNITED STATES TOPOGRAPHIC MAPS
WVDEP
OFFICE OF OIL & GAS
601 57TH STREET
CHARLESTON, WV 25304

Well Type: Oil Waste Disposal Production Deep
 Gas Liquid Injection Storage Shallow

WATERSHED: UPPER OHIO SOUTH ELEVATION: 1,310.15'
 COUNTY/DISTRICT: OHIO/RICHLAND QUADRANGLE: WHEELING WV
 SURFACE OWNER: EDWARD AND JUDITH NICHOLS ACREAGE: 240.06 +/-
 OIL & GAS ROYALTY OWNER: EDWARD AND JUDITH NICHOLS ACREAGE: 449.488 +/-
 LEASE NUMBERS: _____

DRILL CONVERT DRILL DEEPER REDRILL FRACTURE OR STIMULATE
 PLUG OFF FORMATION PERFORATE NEW FORMATION PLUG & ABANDON
 CLEAN OUT & REPLUG OTHER CHANGE (SPECIFY): _____

TARGET FORMATION: MARCELLUS ESTIMATED DEPTH: TVD: 6,205' TMD: 15,186'
 WELL OPERATOR: CHESAPEAKE APPALACHIA, LLC. DESIGNATED AGENT: ERIC GILLESPIE
 ADDRESS: PO BOX 18496 ADDRESS: PO BOX 6070
 CITY: OKLAHOMA CITY STATE: OK ZIP CODE: 73154-0496 CITY: CHARLESTON STATE: WV ZIP CODE: 25301

DATE: APRIL 17, 2012
 OPERATOR'S WELL #: EDWARD NICHOLS OHI 201H
 API WELL #: 47 69 00146 H6A
 STATE COUNTY PERMIT _____

WELL EDWARD NICHOLS OHI 201H
QUAD WHEELING WV

