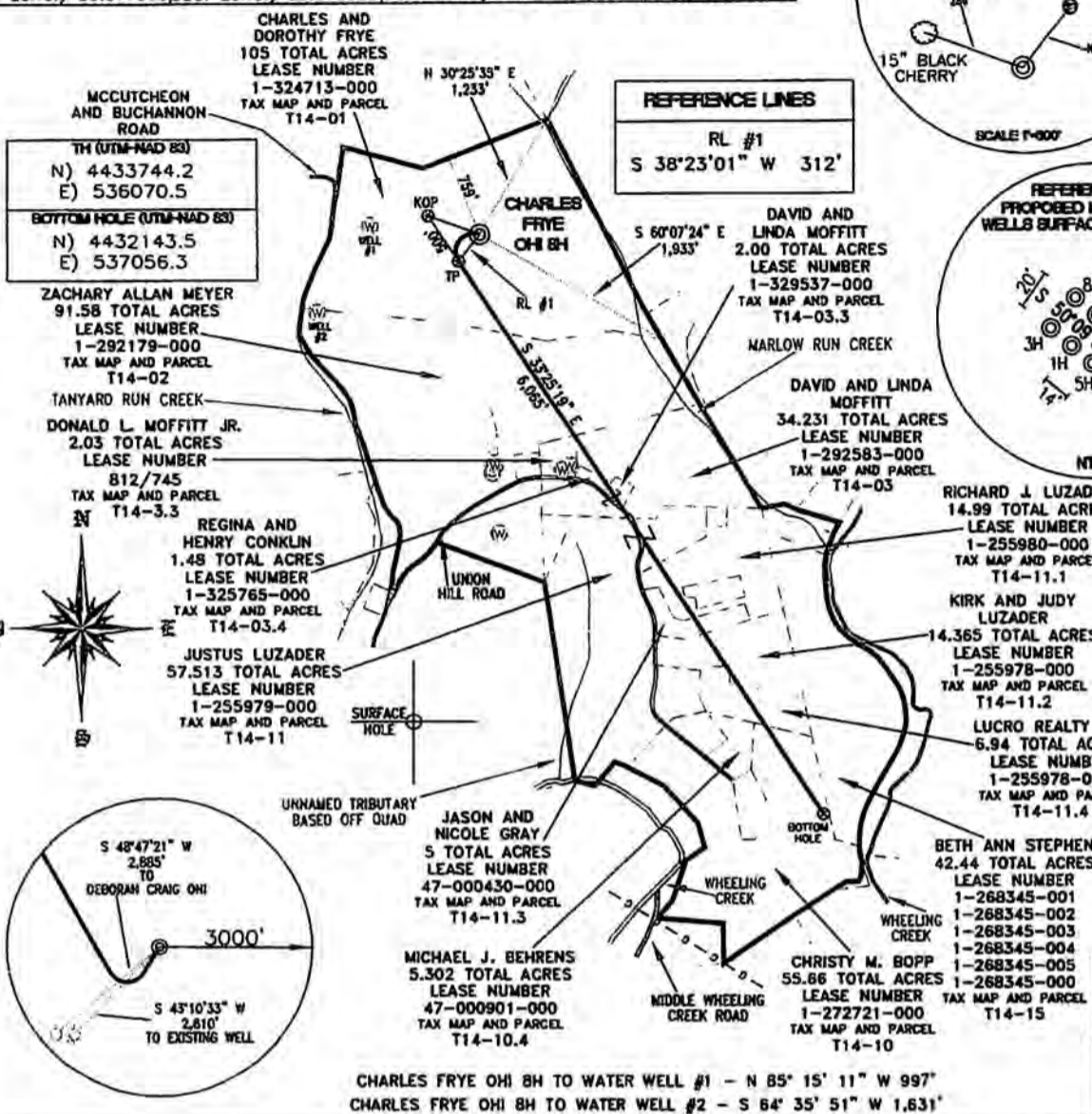
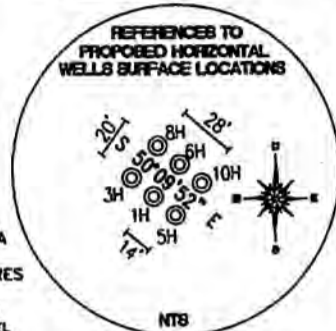
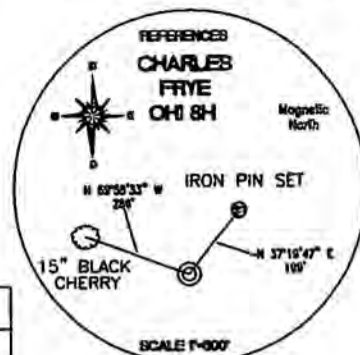
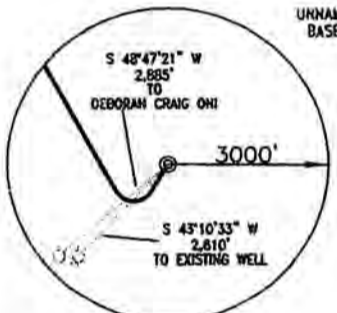
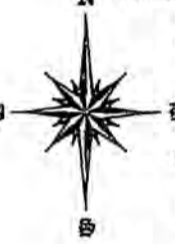


TOP HOLE QUAD 83 N) 567529.2 E) 1666986.9 LAT.) 40°03'11.4" LONG.) 80°34'37.6" DEC. LAT.) 40.053169 DEC. LONG.) 80.577101	KOP QUAD 83 N) 567701.8 E) 1666517.6 LAT.) 40°03'13.1" LONG.) 80°34'43.6" DEC. LAT.) 40.053628 DEC. LONG.) 80.578785	TP QUAD 83 N) 567284.5 E) 1666793.0 LAT.) 40°03'09.0" LONG.) 80°34'40.0" DEC. LAT.) 40.052491 DEC. LONG.) 80.577783	BOTTOM HOLE QUAD 83 N) 562222.1 E) 1670133.8 LAT.) 40°02'19.3" LONG.) 80°33'56.3" DEC. LAT.) 40.038704 DEC. LONG.) 80.565635
TOP HOLE QUAD 27 N) 567492.3 E) 1698421.5 LAT.) 40°03'11.1" LONG.) 80°34'38.3" DEC. LAT.) 40.053096 DEC. LONG.) 80.577305	KOP QUAD 27 N) 567664.9 E) 1697952.2 LAT.) 40°03'12.8" LONG.) 80°34'44.4" DEC. LAT.) 40.053554 DEC. LONG.) 80.578989	TP QUAD 27 N) 567247.5 E) 1698227.6 LAT.) 40°03'08.7" LONG.) 80°34'40.8" DEC. LAT.) 40.052417 DEC. LONG.) 80.577987	BOTTOM HOLE QUAD 27 N) 562185.1 E) 1701568.3 LAT.) 40°02'19.1" LONG.) 80°33'57.0" DEC. LAT.) 40.038630 DEC. LONG.) 80.565840



TH (UTM-NAD 83) N) 4433744.2 E) 536070.5
BOTTOM HOLE (UTM-NAD 83) N) 4432143.5 E) 537056.3

REFERENCE LINES
RL #1 S 38°23'01" W 312'



CHARLES FRYE OHI 8H TO WATER WELL #1 - N 85° 15' 11" W 997'  
 CHARLES FRYE OHI 8H TO WATER WELL #2 - S 84° 35' 51" W 1,631'

**DISCLAIMER**  
 Boundaries as shown taken from deeds, tax maps and field locations. A full boundary survey is not expressed nor implied. All bearings are based on true north. Ownership taken from public records. Ohio County, West Virginia. JULY 2012. State Plane Coordinates & NAD 27 Lat/Long by differential submeter mapping grade GPS drafted by E.A.R.

FILE #: CHE 046  
 DRAWING #: 2091  
 SCALE: 1" = 1600'  
 MINIMUM DEGREE OF ACCURACY: 1/200  
 PROVEN SOURCE SUBMETER MAPPING OF ELEVATION: GRADE GPS

I, THE UNDERSIGNED, HEREBY CERTIFY THAT THIS PLAT IS CORRECT TO THE BEST OF MY KNOWLEDGE AND BELIEF AND SHOWS ALL THE INFORMATION REQUIRED BY LAW AND THE REGULATIONS ISSUED AND PRESCRIBED BY THE DEPARTMENT OF ENVIRONMENTAL PROTECTION.

Signed: \_\_\_\_\_  
 L.L.S. #2124: Ernest J. Benchek III



(+) DENOTES LOCATION OF WELL ON UNITED STATES TOPOGRAPHIC MAPS WVDEP

OFFICE OF OIL & GAS  
 601 57TH STREET  
 CHARLESTON, WV 25304

Well Type:  Oil  Waste Diposal  Production  Deep  
 Gas  Liquid Injection  Storage  Shallow

WATERSHED: UPPER OHIO SOUTH ELEVATION: 1,260'

COUNTY/DISTRICT: OHIO / TRIADDELPHIA QUADRANGLE: VALLEY GROVE, WV.

SURFACE OWNER: CHARLES AND DOROTHY FRYE ACREAGE: 105.00 +/-  
 OIL & GAS ROYALTY OWNER: CHARLES AND DOROTHY FRYE ACREAGE: 390.789 +/-  
 LEASE NUMBERS: \_\_\_\_\_

DRILL  CONVERT  DRILL DEEPER  REDRILL  FRACTURE OR STIMULATE   
 PLUG OFF FORMATION  PERFORATE NEW FORMATION  PLUG & ABANDON   
 CLEAN OUT & REPLUG  OTHER CHANGE  (SPECIFY): \_\_\_\_\_

TARGET FORMATION: MARCELLUS ESTIMATED DEPTH: TVD: 6,500' TMD: 12,868'

WELL OPERATOR: CHESAPEAKE APPALACHIA, LLC. DESIGNATED AGENT: ERIC GILLESPIE  
 ADDRESS: PO BOX 18496 ADDRESS: PO BOX 6070  
 CITY: OKLAHOMA CITY STATE: OK ZIP CODE: 73154-0496 CITY: CHARLESTON STATE: WV ZIP CODE: 25301

DATE: AUGUST 6, 2012  
 OPERATOR'S WELL #: CHARLES FRYE OHI 8H  
 API WELL #: 47 69 00163#6A  
 STATE COUNTY PERMIT

