

SOUTHWESTERN ENERGY

Location: Ohio County, WV Slot: Slot #206
 Field: Ohio Well: Shawn Couch OHI 206H
 Facility: Shawn Couch OHI Pad 1 Wellbore: Shawn Couch OHI 206H PWB



Plot reference wellpath is Shawn Couch OHI 206H PWP Ex-01	
True vertical depths are referenced to Rlg on Slot #206 (KB)	Grid System NAD83 / UTM Zone 17 North, US feet
Measured depths are referenced to Rlg on Slot #206 (KB)	North Reference: Grid north
Rig on Slot #206 (KB) to Mean Sea Level: 1272 feet	Scale: True distance
Mean Sea Level to Mud line (At Slot: Slot #206): 0 feet	Depths are in feet
Coordinates are in feet referenced to Slot	Created by: thomsuzc on 8/27/2015

Targets

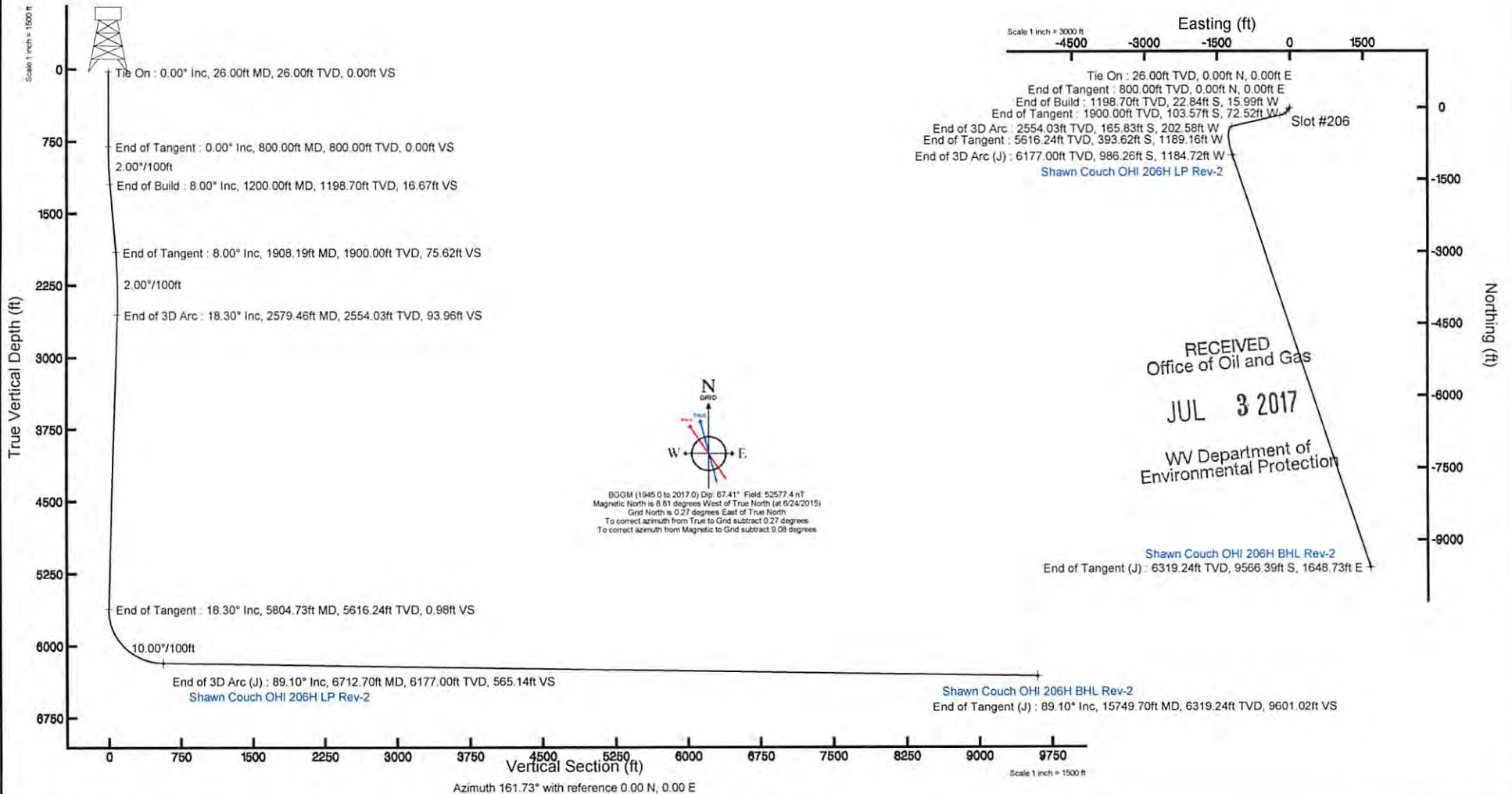
Name	MD (ft)	TVD (ft)	Local N (ft)	Local E (ft)	Grid East (US ft)	Grid North (US ft)	Latitude	Longitude
Shawn Couch OHI 206H LP Rev-2	6712.70	6177.00	-986.26	-1184.72	1754165.75	14579829.12	40°08'42.3377"N	80°35'34.674"W
Shawn Couch OHI 206H BHL Rev-2	15749.70	6319.24	-9566.39	-1648.73	1756698.11	14531252.30	40°07'17.419"N	80°34'58.705"W

Well Profile Data

Design Comment	MD (ft)	Inc (°)	Az (°)	TVD (ft)	Local N (ft)	Local E (ft)	DLS (°/100ft)	VS (ft)
Tie On	26.00	0.000	215.000	26.00	0.00	0.00	0.00	0.00
End of Tangent	800.00	0.000	215.000	800.00	0.00	0.00	0.00	0.00
End of Build	1200.00	8.000	215.000	1198.70	-22.84	-15.99	2.00	16.67
End of Tangent	1908.19	8.000	215.000	1900.00	-103.57	-72.52	0.00	75.62
End of 3D Arc	2579.46	18.297	256.999	2554.03	-165.83	-202.58	2.00	93.96
End of Tangent	5804.73	18.297	256.999	5616.24	-393.62	-1189.16	0.00	0.98
End of 3D Arc (J)	6712.70	89.098	161.725	6177.00	-986.26	-1184.72	10.00	565.14
End of Tangent (J)	15749.70	89.098	161.725	6319.24	-9566.39	1648.73	0.00	9601.02

Location Information

Facility Name	Grid East (US ft)	Grid North (US ft)	Latitude	Longitude		
Shawn Couch OHI Pad 1	1755367.233	14580844.955	40°08'52.325"N	80°35'19.136"W		
Slot	Local N (ft)	Local E (ft)	Grid East (US ft)	Grid North (US ft)	Latitude	Longitude
Slot #206	-29.97	-17.23	1755350.015	14580814.994	40°08'52.030"N	80°35'19.360"W
Rig on Slot #206 (KB) to Mud line (At Slot: Slot #206)				1272ft		
Mean Sea Level to Mud line (At Slot: Slot #206)				0ft		
Rig on Slot #206 (KB) to Mean Sea Level				1272ft		





Planned Wellpath Report

Shawn Couch OHI 206H PWP Ex-01

Page 1 of 8



REFERENCE WELLPATH IDENTIFICATION

Operator	SOUTHWESTERN ENERGY	Slot	Slot #206	RECEIVED Office of Oil and Gas JUL 3 2017 WV Department of Environmental Protection
Area	Ohio County, WV	Well	Shawn Couch OHI 206H	
Field	Ohio	Wellbore	Shawn Couch OHI 206H PWB	
Facility	Shawn Couch OHI Pad 1			

REPORT SETUP INFORMATION

Projection System	NAD83 / UTM Zone 17 North, US feet	Software System	WellArchitect® 4.0.1
North Reference	Grid	User	Thomsuzc
Scale	0.999615	Report Generated	8/27/2015 at 10:01:38 AM
Convergence at slot	0.27° East	Database/Source file	WA_Eastern_US/Shawn_Couch_OHI_206H_PWB.xml

WELLPATH LOCATION

	Local coordinates		Grid coordinates		Geographic coordinates	
	North[ft]	East[ft]	Easting[US ft]	Northing[US ft]	Latitude	Longitude
Slot Location	-29.97	-17.23	1755350.02	14580814.99	40°08'52.030"N	80°35'19.360"W
Facility Reference Pt			1755367.23	14580844.96	40°08'52.325"N	80°35'19.136"W
Field Reference Pt			0.00	0.00	0°00'00.000"	85°29'19.478"W

WELLPATH DATUM

Calculation method	Minimum curvature	Rig on Slot #206 (KB) to Facility Vertical Datum	1272.00ft
Horizontal Reference Pt	Slot	Rig on Slot #206 (KB) to Mean Sea Level	1272.00ft
Vertical Reference Pt	Rig on Slot #206 (KB)	Rig on Slot #206 (KB) to Mud Line at Slot (Slot #206)	1272.00ft
MD Reference Pt	Rig on Slot #206 (KB)	Section Origin	N 0.00, E 0.00 ft
Field Vertical Reference	Mean Sea Level	Section Azimuth	161.73°



Planned Wellpath Report

Shawn Couch OHI 206H PWP Ex-01

Page 5 of 8



REFERENCE WELLPATH IDENTIFICATION

Operator	SOUTHWESTERN ENERGY	Slot	Slot #206	RECEIVED Office of Oil and Gas
Area	Ohio County, WV	Well	Shawn Couch OHI 206H	JUL 3 2017
Field	Ohio	Wellbore	Shawn Couch OHI 206H PWB	
Facility	Shawn Couch OHI Pad 1			WV Department of Environmental Protection

WELLPATH DATA (166 stations) † = interpolated/extrapolated station

MD [ft]	Inclination [°]	Azimuth [°]	TVD [ft]	Vert Sect [ft]	North [ft]	East [ft]	Grid East [US ft]	Grid North [US ft]	Latitude	Longitude	Closure Dist [ft]	Closure Dir [°]	DLS [°/100ft]	Build Rate [°/100ft]	Turn Rate [°/100ft]
8326.00†	89.098	161.725	6202.39	2178.23	-2518.00	-678.89	1754671.39	14578297.97	40°08'27.178"N	80°35'28.251"W	2607.91	195.089	0.00	0.00	0.00
8426.00†	89.098	161.725	6203.97	2278.22	-2612.94	-647.53	1754702.73	14578203.07	40°08'26.238"N	80°35'27.853"W	2691.98	193.919	0.00	0.00	0.00
8526.00†	89.098	161.725	6205.54	2378.21	-2707.88	-616.18	1754734.07	14578108.16	40°08'25.298"N	80°35'27.455"W	2777.11	192.819	0.00	0.00	0.00
8626.00†	89.098	161.725	6207.11	2478.20	-2802.83	-584.83	1754765.41	14578013.25	40°08'24.359"N	80°35'27.057"W	2863.19	191.786	0.00	0.00	0.00
8726.00†	89.098	161.725	6208.69	2578.18	-2897.77	-553.47	1754796.76	14577918.34	40°08'23.419"N	80°35'26.659"W	2950.16	190.813	0.00	0.00	0.00
8826.00†	89.098	161.725	6210.26	2678.17	-2992.72	-522.12	1754828.10	14577823.43	40°08'22.479"N	80°35'26.261"W	3037.92	189.896	0.00	0.00	0.00
8926.00†	89.098	161.725	6211.84	2778.16	-3087.66	-490.76	1754859.44	14577728.53	40°08'21.540"N	80°35'25.863"W	3126.42	189.031	0.00	0.00	0.00
9026.00†	89.098	161.725	6213.41	2878.15	-3182.61	-459.41	1754890.78	14577633.62	40°08'20.600"N	80°35'25.464"W	3215.59	188.214	0.00	0.00	0.00
9126.00†	89.098	161.725	6214.98	2978.14	-3277.55	-428.06	1754922.12	14577538.71	40°08'19.660"N	80°35'25.066"W	3305.39	187.441	0.00	0.00	0.00
9226.00†	89.098	161.725	6216.56	3078.12	-3372.50	-396.70	1754953.47	14577443.80	40°08'18.721"N	80°35'24.668"W	3395.75	186.709	0.00	0.00	0.00
9326.00†	89.098	161.725	6218.13	3178.11	-3467.44	-365.35	1754984.81	14577348.90	40°08'17.781"N	80°35'24.270"W	3486.63	186.015	0.00	0.00	0.00
9426.00†	89.098	161.725	6219.71	3278.10	-3562.38	-334.00	1755016.15	14577253.99	40°08'16.841"N	80°35'23.872"W	3578.01	185.356	0.00	0.00	0.00
9526.00†	89.098	161.725	6221.28	3378.09	-3657.33	-302.64	1755047.49	14577159.08	40°08'15.902"N	80°35'23.474"W	3669.83	184.730	0.00	0.00	0.00
9626.00†	89.098	161.725	6222.85	3478.07	-3752.27	-271.29	1755078.83	14577064.17	40°08'14.962"N	80°35'23.076"W	3762.07	184.135	0.00	0.00	0.00
9726.00†	89.098	161.725	6224.43	3578.06	-3847.22	-239.93	1755110.17	14576969.26	40°08'14.022"N	80°35'22.678"W	3854.69	183.569	0.00	0.00	0.00
9826.00†	89.098	161.725	6226.00	3678.05	-3942.16	-208.58	1755141.52	14576874.36	40°08'13.083"N	80°35'22.280"W	3947.68	183.029	0.00	0.00	0.00
9926.00†	89.098	161.725	6227.58	3778.04	-4037.11	-177.23	1755172.86	14576779.45	40°08'12.143"N	80°35'21.882"W	4041.00	182.514	0.00	0.00	0.00
10026.00†	89.098	161.725	6229.15	3878.02	-4132.05	-145.87	1755204.20	14576684.54	40°08'11.203"N	80°35'21.484"W	4134.63	182.022	0.00	0.00	0.00
10126.00†	89.098	161.725	6230.72	3978.01	-4227.00	-114.52	1755235.54	14576589.63	40°08'10.264"N	80°35'21.086"W	4228.55	181.552	0.00	0.00	0.00
10226.00†	89.098	161.725	6232.30	4078.00	-4321.94	-83.16	1755266.88	14576494.73	40°08'09.324"N	80°35'20.688"W	4322.74	181.102	0.00	0.00	0.00
10326.00†	89.098	161.725	6233.87	4177.99	-4416.88	-51.81	1755298.22	14576399.82	40°08'08.384"N	80°35'20.290"W	4417.19	180.672	0.00	0.00	0.00
10426.00†	89.098	161.725	6235.45	4277.97	-4511.83	-20.46	1755329.57	14576304.91	40°08'07.445"N	80°35'19.892"W	4511.88	180.260	0.00	0.00	0.00
10526.00†	89.098	161.725	6237.02	4377.96	-4606.77	10.90	1755360.91	14576210.00	40°08'06.505"N	80°35'19.494"W	4606.79	179.864	0.00	0.00	0.00
10626.00†	89.098	161.725	6238.59	4477.95	-4701.72	42.25	1755392.25	14576115.10	40°08'05.565"N	80°35'19.096"W	4701.91	179.485	0.00	0.00	0.00
10726.00†	89.098	161.725	6240.17	4577.94	-4796.66	73.61	1755423.59	14576020.19	40°08'04.626"N	80°35'18.698"W	4797.23	179.121	0.00	0.00	0.00
10826.00†	89.098	161.725	6241.74	4677.92	-4891.61	104.96	1755454.93	14575925.28	40°08'03.686"N	80°35'18.300"W	4892.73	178.771	0.00	0.00	0.00
10926.00†	89.098	161.725	6243.32	4777.91	-4986.55	136.31	1755486.28	14575830.37	40°08'02.746"N	80°35'17.902"W	4988.41	178.434	0.00	0.00	0.00
11026.00†	89.098	161.725	6244.89	4877.90	-5081.50	167.67	1755517.62	14575735.46	40°08'01.807"N	80°35'17.504"W	5084.26	178.110	0.00	0.00	0.00
11126.00†	89.098	161.725	6246.46	4977.89	-5176.44	199.02	1755548.96	14575640.56	40°08'00.867"N	80°35'17.106"W	5180.27	177.798	0.00	0.00	0.00
11226.00†	89.098	161.725	6248.04	5077.87	-5271.39	230.38	1755580.30	14575545.65	40°07'59.927"N	80°35'16.708"W	5276.42	177.498	0.00	0.00	0.00



Planned Wellpath Report

Shawn Couch OHI 206H PWP Ex-01

Page 6 of 8



REFERENCE WELLPATH IDENTIFICATION				RECEIVED Office of Oil and Gas	
Operator	SOUTHWESTERN ENERGY	Slot	Slot #206	JUL 3 2017	
Area	Ohio County, WV	Well	Shawn Couch OHI 206H		
Field	Ohio	Wellbore	Shawn Couch OHI 206H PWB	WV Department of Environmental Protection	
Facility	Shawn Couch OHI Pad 1				

WELLPATH DATA (166 stations) † = interpolated/extrapolated station

MD [ft]	Inclination [°]	Azimuth [°]	TVD [ft]	Vert Sect [ft]	North [ft]	East [ft]	Grid East [US ft]	Grid North [US ft]	Latitude	Longitude	Closure Dist [ft]	Closure Dir [°]	DLS [°/100ft]	Build Rate [°/100ft]	Turn Rate [°/100ft]
11326.00†	89.098	161.725	6249.61	5177.86	-5366.33	261.73	1755611.64	14575450.74	40°07'58.988"N	80°35'16.310"W	5372.71	177.208	0.00	0.00	0.00
11426.00†	89.098	161.725	6251.19	5277.85	-5461.27	293.08	1755642.98	14575355.83	40°07'58.048"N	80°35'15.912"W	5469.13	176.928	0.00	0.00	0.00
11526.00†	89.098	161.725	6252.76	5377.84	-5556.22	324.44	1755674.33	14575260.93	40°07'57.108"N	80°35'15.514"W	5565.68	176.658	0.00	0.00	0.00
11626.00†	89.098	161.725	6254.33	5477.83	-5651.16	355.79	1755705.67	14575166.02	40°07'56.169"N	80°35'15.116"W	5662.35	176.397	0.00	0.00	0.00
11726.00†	89.098	161.725	6255.91	5577.81	-5746.11	387.14	1755737.01	14575071.11	40°07'55.229"N	80°35'14.718"W	5759.13	176.146	0.00	0.00	0.00
11826.00†	89.098	161.725	6257.48	5677.80	-5841.05	418.50	1755768.35	14574976.20	40°07'54.289"N	80°35'14.320"W	5856.03	175.902	0.00	0.00	0.00
11926.00†	89.098	161.725	6259.06	5777.79	-5936.00	449.85	1755799.69	14574881.29	40°07'53.350"N	80°35'13.922"W	5953.02	175.666	0.00	0.00	0.00
12026.00†	89.098	161.725	6260.63	5877.78	-6030.94	481.21	1755831.04	14574786.39	40°07'52.410"N	80°35'13.524"W	6050.11	175.438	0.00	0.00	0.00
12126.00†	89.098	161.725	6262.20	5977.76	-6125.89	512.56	1755862.38	14574691.48	40°07'51.470"N	80°35'13.126"W	6147.29	175.217	0.00	0.00	0.00
12226.00†	89.098	161.725	6263.78	6077.75	-6220.83	543.91	1755893.72	14574596.57	40°07'50.531"N	80°35'12.728"W	6244.56	175.003	0.00	0.00	0.00
12326.00†	89.098	161.725	6265.35	6177.74	-6315.77	575.27	1755925.06	14574501.66	40°07'49.591"N	80°35'12.330"W	6341.92	174.796	0.00	0.00	0.00
12426.00†	89.098	161.725	6266.93	6277.73	-6410.72	606.62	1755956.40	14574406.76	40°07'48.651"N	80°35'11.932"W	6439.36	174.594	0.00	0.00	0.00
12526.00†	89.098	161.725	6268.50	6377.71	-6505.66	637.98	1755987.74	14574311.85	40°07'47.712"N	80°35'11.534"W	6536.87	174.399	0.00	0.00	0.00
12626.00†	89.098	161.725	6270.07	6477.70	-6600.61	669.33	1756019.09	14574216.94	40°07'46.772"N	80°35'11.136"W	6634.46	174.210	0.00	0.00	0.00
12726.00†	89.098	161.725	6271.65	6577.69	-6695.55	700.68	1756050.43	14574122.03	40°07'45.832"N	80°35'10.738"W	6732.12	174.026	0.00	0.00	0.00
12826.00†	89.098	161.725	6273.22	6677.68	-6790.50	732.04	1756081.77	14574027.12	40°07'44.892"N	80°35'10.340"W	6829.84	173.847	0.00	0.00	0.00
12926.00†	89.098	161.725	6274.80	6777.66	-6885.44	763.39	1756113.11	14573932.22	40°07'43.953"N	80°35'09.942"W	6927.63	173.673	0.00	0.00	0.00
13026.00†	89.098	161.725	6276.37	6877.65	-6980.39	794.75	1756144.45	14573837.31	40°07'43.013"N	80°35'09.544"W	7025.48	173.505	0.00	0.00	0.00
13126.00†	89.098	161.725	6277.94	6977.64	-7075.33	826.10	1756175.79	14573742.40	40°07'42.073"N	80°35'09.146"W	7123.39	173.340	0.00	0.00	0.00
13226.00†	89.098	161.725	6279.52	7077.63	-7170.27	857.45	1756207.14	14573647.49	40°07'41.134"N	80°35'08.748"W	7221.36	173.181	0.00	0.00	0.00
13326.00†	89.098	161.725	6281.09	7177.61	-7265.22	888.81	1756238.48	14573552.59	40°07'40.194"N	80°35'08.350"W	7319.38	173.025	0.00	0.00	0.00
13426.00†	89.098	161.725	6282.67	7277.60	-7360.16	920.16	1756269.82	14573457.68	40°07'39.254"N	80°35'07.952"W	7417.46	172.874	0.00	0.00	0.00
13526.00†	89.098	161.725	6284.24	7377.59	-7455.11	951.52	1756301.16	14573362.77	40°07'38.315"N	80°35'07.554"W	7515.59	172.727	0.00	0.00	0.00
13626.00†	89.098	161.725	6285.81	7477.58	-7550.05	982.87	1756332.50	14573267.86	40°07'37.375"N	80°35'07.157"W	7613.76	172.583	0.00	0.00	0.00
13726.00†	89.098	161.725	6287.39	7577.57	-7645.00	1014.22	1756363.85	14573172.96	40°07'36.435"N	80°35'06.759"W	7711.98	172.443	0.00	0.00	0.00
13826.00†	89.098	161.725	6288.96	7677.55	-7739.94	1045.58	1756395.19	14573078.05	40°07'35.496"N	80°35'06.361"W	7810.25	172.307	0.00	0.00	0.00
13926.00†	89.098	161.725	6290.54	7777.54	-7834.89	1076.93	1756426.53	14572983.14	40°07'34.556"N	80°35'05.963"W	7908.55	172.174	0.00	0.00	0.00
14026.00†	89.098	161.725	6292.11	7877.53	-7929.83	1108.29	1756457.87	14572888.23	40°07'33.616"N	80°35'05.565"W	8006.90	172.044	0.00	0.00	0.00
14126.00†	89.098	161.725	6293.68	7977.52	-8024.78	1139.64	1756489.21	14572793.32	40°07'32.677"N	80°35'05.167"W	8105.29	171.917	0.00	0.00	0.00
14226.00†	89.098	161.725	6295.26	8077.50	-8119.72	1170.99	1756520.55	14572698.42	40°07'31.737"N	80°35'04.769"W	8203.72	171.794	0.00	0.00	0.00



Planned Wellpath Report

Shawn Couch OHI 206H PWP Ex-01

Page 7 of 8



RECEIVED
Office of Oil and Gas
JUL 3 2017

WV Department of
Environmental Protection

REFERENCE WELLPATH IDENTIFICATION

Operator	SOUTHWESTERN ENERGY	Slot	Slot #206
Area	Ohio County, WV	Well	Shawn Couch OHI 206H
Field	Ohio	Wellbore	Shawn Couch OHI 206H PWB
Facility	Shawn Couch OHI Pad 1		

WELLPATH DATA (166 stations) † = interpolated/extrapolated station

MD [ft]	Inclination [°]	Azimuth [°]	TVD [ft]	Vert Sect [ft]	North [ft]	East [ft]	Grid East [US ft]	Grid North [US ft]	Latitude	Longitude	Closure Dist [ft]	Closure Dir [°]	DLS [°/100ft]	Build Rate [°/100ft]	Turn Rate [°/100ft]
14326.00†	89.098	161.725	6296.83	8177.49	-8214.66	1202.35	1756551.90	14572603.51	40°07'30.797"N	80°35'04.371"W	8302.19	171.673	0.00	0.00	0.00
14426.00†	89.098	161.725	6298.41	8277.48	-8309.61	1233.70	1756583.24	14572508.60	40°07'29.858"N	80°35'03.973"W	8400.69	171.555	0.00	0.00	0.00
14526.00†	89.098	161.725	6299.98	8377.47	-8404.55	1265.05	1756614.58	14572413.69	40°07'28.918"N	80°35'03.575"W	8499.23	171.440	0.00	0.00	0.00
14626.00†	89.098	161.725	6301.55	8477.45	-8499.50	1296.41	1756645.92	14572318.79	40°07'27.978"N	80°35'03.177"W	8597.80	171.328	0.00	0.00	0.00
14726.00†	89.098	161.725	6303.13	8577.44	-8594.44	1327.76	1756677.26	14572223.88	40°07'27.038"N	80°35'02.779"W	8696.40	171.218	0.00	0.00	0.00
14826.00†	89.098	161.725	6304.70	8677.43	-8689.39	1359.12	1756708.61	14572128.97	40°07'26.099"N	80°35'02.382"W	8795.03	171.110	0.00	0.00	0.00
14926.00†	89.098	161.725	6306.28	8777.42	-8784.33	1390.47	1756739.95	14572034.06	40°07'25.159"N	80°35'01.984"W	8893.70	171.005	0.00	0.00	0.00
15026.00†	89.098	161.725	6307.85	8877.40	-8879.28	1421.82	1756771.29	14571939.15	40°07'24.219"N	80°35'01.586"W	8992.39	170.903	0.00	0.00	0.00
15126.00†	89.098	161.725	6309.42	8977.39	-8974.22	1453.18	1756802.63	14571844.25	40°07'23.280"N	80°35'01.188"W	9091.11	170.802	0.00	0.00	0.00
15226.00†	89.098	161.725	6311.00	9077.38	-9069.16	1484.53	1756833.97	14571749.34	40°07'22.340"N	80°35'00.790"W	9189.86	170.704	0.00	0.00	0.00
15326.00†	89.098	161.725	6312.57	9177.37	-9164.11	1515.89	1756865.31	14571654.43	40°07'21.400"N	80°35'00.392"W	9288.64	170.607	0.00	0.00	0.00
15426.00†	89.098	161.725	6314.14	9277.35	-9259.05	1547.24	1756896.66	14571559.52	40°07'20.461"N	80°34'59.994"W	9387.44	170.513	0.00	0.00	0.00
15526.00†	89.098	161.725	6315.72	9377.34	-9354.00	1578.59	1756928.00	14571464.62	40°07'19.521"N	80°34'59.596"W	9486.27	170.421	0.00	0.00	0.00
15626.00†	89.098	161.725	6317.29	9477.33	-9448.94	1609.95	1756959.34	14571369.71	40°07'18.581"N	80°34'59.199"W	9585.12	170.331	0.00	0.00	0.00
15726.00†	89.098	161.725	6318.87	9577.32	-9543.89	1641.30	1756990.68	14571274.80	40°07'17.642"N	80°34'58.801"W	9683.99	170.242	0.00	0.00	0.00
15749.70	89.098	161.725	6319.24 ²	9601.02	-9566.39	1648.73	1756998.11	14571252.30	40°07'17.419"N	80°34'58.706"W	9707.43	170.221	0.00	0.00	0.00



Planned Wellpath Report

Shawn Couch OHI 206H PWP Ex-01

Page 8 of 8



RECEIVED
Office of Oil and Gas

JUL 3 2017

WV Department of
Environmental Protection

REFERENCE WELLPATH IDENTIFICATION

Operator	SOUTHWESTERN ENERGY	Slot	Slot #206
Area	Ohio County, WV	Well	Shawn Couch OHI 206H
Field	Ohio	Wellbore	Shawn Couch OHI 206H PWB
Facility	Shawn Couch OHI Pad 1		

TARGETS

Name	MD [ft]	TVD [ft]	North [ft]	East [ft]	Grid East [US ft]	Grid North [US ft]	Latitude	Longitude	Shape
1) Shawn Couch OHI 206H LP Rev-2	6712.70	6177.00	-986.26	-1184.72	1754165.75	14579829.12	40°08'42.337"N	80°35'34.674"W	point
2) Shawn Couch OHI 206H BHL Rev-2	15749.70	6319.24	-9566.39	1648.73	1756998.11	14571252.30	40°07'17.419"N	80°34'58.706"W	point

SURVEY PROGRAM - Ref Wellbore: Shawn Couch OHI 206H PWB Ref Wellpath: Shawn Couch OHI 206H PWP Ex-01

Start MD [ft]	End MD [ft]	Positional Uncertainty Model	Log Name/Comment	Wellbore
26.00	1000.00	Generic gyro - continuous (Standard)		Shawn Couch OHI 206H PWB
1000.00	15749.70	ISCWSA MWD, Rev. 2 (Standard)		Shawn Couch OHI 206H PWB