

**5D Survey Report**

---

**SOUTHWESTERN ENERGY**

**Field Name:** *SOUTHWESTERN\_OHIO CO, WV UTM NAD 83 (17N)*  
**Site Name:** *Melvin Kahle OHI Pad*  
**Well Name:** *Melvin Kahle OHI 10H*  
**Survey:** *Definitive survey*

---

27 February 2018

RECEIVED  
Office of Oil and Gas

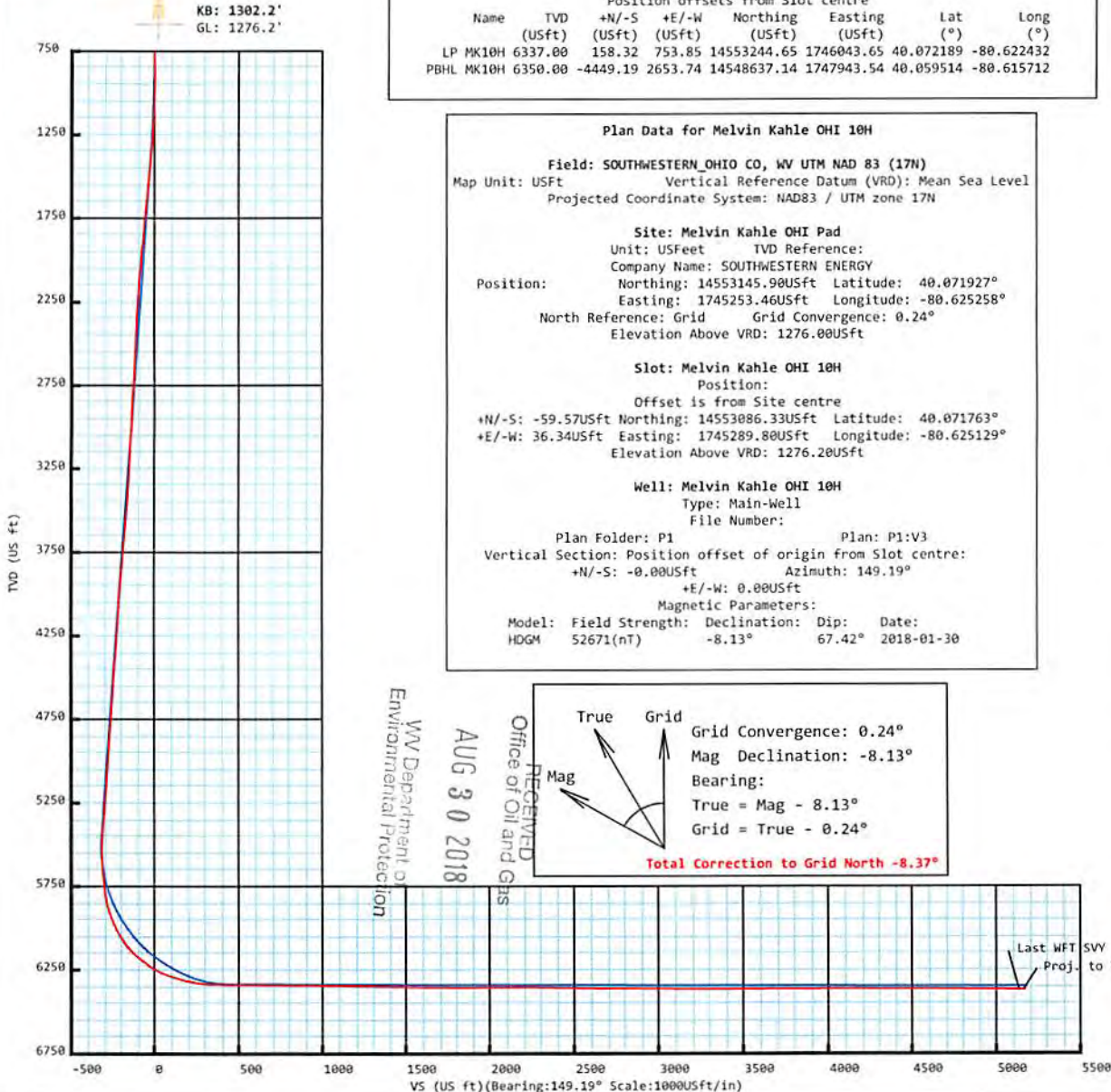
AUG 30 2018

WV Department of  
Environmental Protection**Weatherford®**



Southwestern Energy®  
Melvin Kahle OHI 10H  
Ohio Co, WV  
SDC 41

**Plan vs Actual**



**Plan Data for Melvin Kahle OHI 10H**

Plan Point Information:  
Dogleg Severity Unit: °/100.00ft Position offsets from Slot centre

MD	Inc	Az	TVD	+N/-S	+E/-W	VSec	DLS	Toolface	Comments
(USft)	(°)	(°)	(USft)	(USft)	(USft)	(DLSU)	(°)	(°)	(°)
0.00	0.00	0.00	-0.00	-0.00	0.00	0.00	0.00	0.00	0.0
840.00	0.00	0.00	840.00	-0.00	0.00	0.00	0.00	0.00	0.0 Nudge KOP
1340.00	10.00	35.06	1337.47	35.62	25.00	-17.79	2.00	35.1	Hold
5525.30	10.00	35.06	5459.18	630.49	442.53	-314.79	0.00	0.0	Curve KOP 7° DLS
6602.42	70.00	156.35	6298.54	175.88	744.12	230.13	7.00	123.9	Build/Turn 9° DLS
6823.33	89.84	157.59	6337.00	-23.31	828.72	444.53	9.00	3.7	Landing Point
11610.75	89.84	157.59	6350.00	-4449.19	2653.74	5180.51	0.00	0.0	PBHL MK10H

Target Set Information:  
Name: Melvin Kahle OHI 10H  
Position offsets from Slot centre

Name	TVD	+N/-S	+E/-W	Northing	Easting	Lat	Long
(USft)	(USft)	(USft)	(USft)	(USft)	(USft)	(°)	(°)
LP MK10H	6337.00	158.32	753.85	14553244.65	1746043.65	40.072189	-80.622432
PBHL MK10H	6350.00	-4449.19	2653.74	14548637.14	1747943.54	40.059514	-80.615712

**Plan Data for Melvin Kahle OHI 10H**

Field: SOUTHWESTERN OHIO CO, WV UTM NAD 83 (17N)  
Map Unit: USft Vertical Reference Datum (VRD): Mean Sea Level  
Projected Coordinate System: NAD83 / UTM zone 17N

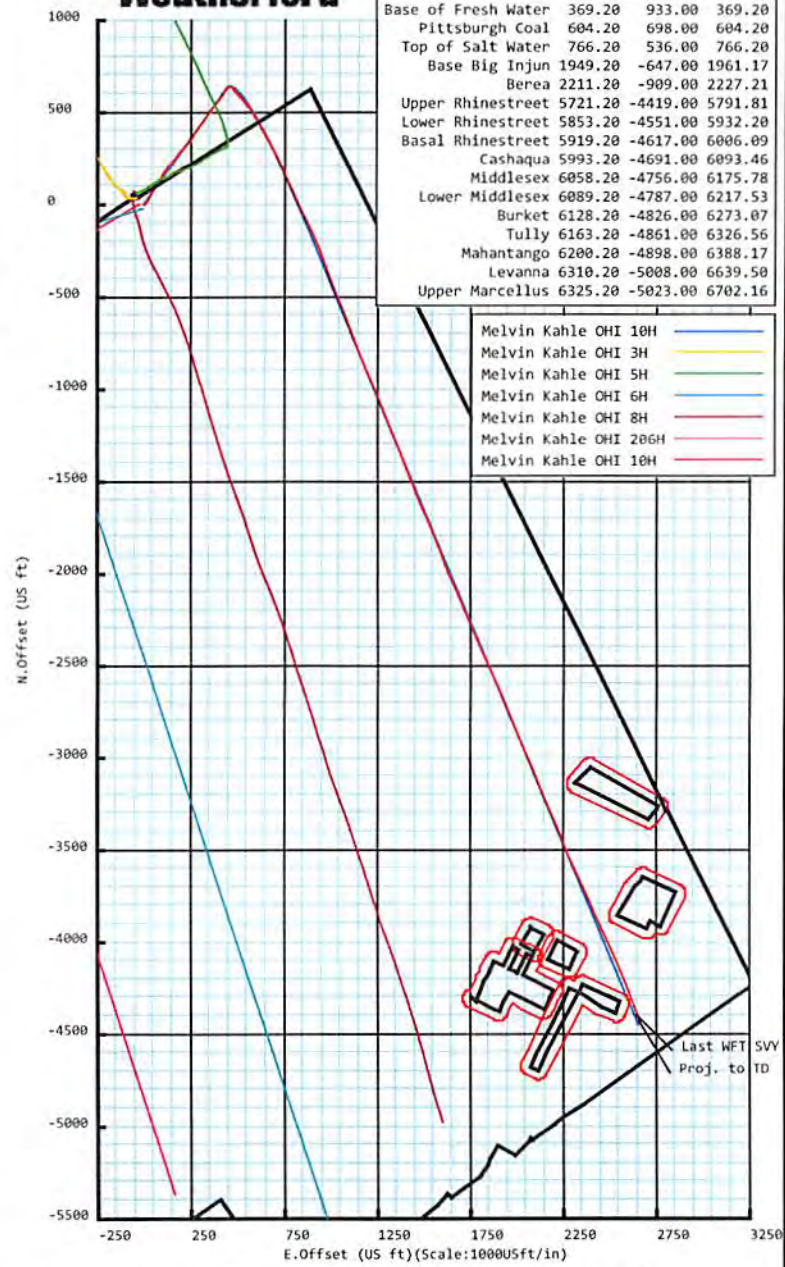
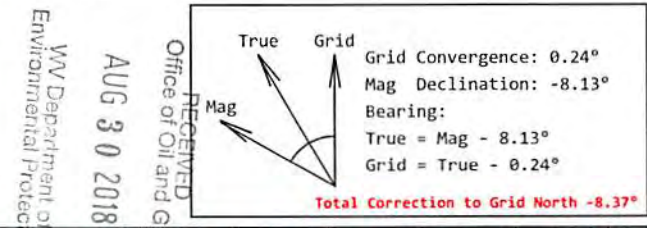
Site: Melvin Kahle OHI Pad  
Unit: USFeet TVD Reference:  
Company Name: SOUTHWESTERN ENERGY  
Position: Northing: 14553145.90USft Latitude: 40.071927°  
Easting: 1745253.46USft Longitude: -80.625258°  
North Reference: Grid Grid Convergence: 0.24°  
Elevation Above VRD: 1276.00USft

Slot: Melvin Kahle OHI 10H  
Position:  
Offset is from Site centre  
+N/-S: -59.57USft Northing: 14553086.33USft Latitude: 40.071763°  
+E/-W: 36.34USft Easting: 1745289.80USft Longitude: -80.625129°  
Elevation Above VRD: 1276.20USft

Well: Melvin Kahle OHI 10H  
Type: Main-Well  
File Number:

Plan Folder: P1 Plan: P1:V3  
Vertical Section: Position offset of origin from Slot centre:  
+N/-S: -0.00USft Azimuth: 149.19°  
+E/-W: 0.00USft

Magnetic Parameters:  
Model: Field Strength: Declination: Dip: Date:  
HDGM 52671(nT) -8.13° 67.42° 2018-01-30



**Plan Data for Melvin Kahle OHI 10H**

Formation Point Information:

Name	TVD	SS	MD
(USft)	(USft)	(USft)	(USft)
Base of Fresh Water	369.20	933.00	369.20
Pittsburgh Coal	604.20	698.00	604.20
Top of Salt Water	766.20	536.00	766.20
Base Big Injun	1949.20	-647.00	1961.17
Berea	2211.20	-909.00	2227.21
Upper Rhinestreet	5721.20	-4419.00	5791.81
Lower Rhinestreet	5853.20	-4551.00	5932.20
Basal Rhinestreet	5919.20	-4617.00	6006.09
Cashaqua	5993.20	-4691.00	6093.46
Middlesex	6058.20	-4756.00	6175.78
Lower Middlesex	6089.20	-4787.00	6217.53
Burket	6128.20	-4826.00	6273.07
Tully	6163.20	-4861.00	6326.56
Mahantango	6200.20	-4898.00	6388.17
Levanna	6310.20	-5008.00	6639.50
Upper Marcellus	6325.20	-5023.00	6702.16

Drawing By: Gary Rhodes Date: 31 January 2018  
Office Name: MidCon DS  
Address: 7725 W. Reno Ave, Ste. #220  
Oklahoma City, OK 73127  
Phone: +1.405.720.4257



## Melvin Kahle OHI 10H

<b>Field Name:</b>	SOUTHWESTER N_OHIO CO, WV UTM NAD 83 (17N)	<b>Map Units:</b> US ft	<b>Company Name:</b> SOUTHWESTERN ENERGY
		<b>Vertical Reference Datum (VRD):</b> Mean Sea Level	
		<b>Projected Coordinate System:</b> NAD83 / UTM zone 17N	
		<b>Comment:</b>	

<b>Site:</b>	Melvin Kahle OHI Pad	<b>Units:</b> US ft	<b>North Reference:</b> Grid	<b>Convergence Angle:</b> 0.24
		<b>Position:</b>	<b>Northing:</b> 14553145.90 US ft	<b>Latitude:</b> 40.071927
			<b>Easting:</b> 1745253.46 US ft	<b>Longitude:</b> -80.625258
		<b>Elevation above MSL:</b> 1276.00 US ft		
		<b>Comment:</b>		

<b>Slot:</b>	Melvin Kahle OHI 10H	<b>Position (Relative to Site Centre)</b>		
		<b>+N/-S:</b> -59.57 US ft	<b>Northing:</b> 14553086.33 US ft	<b>Latitude:</b> 40.071763
		<b>+E/-W:</b> 36.34 US ft	<b>Easting:</b> 1745289.80 US ft	<b>Longitude:</b> -80.625129
		<b>Elevation above MSL:</b> 1276.20 US ft		
		<b>Comment:</b>		

<b>Well:</b>	Melvin Kahle OHI 10H	<b>Type:</b> Main well	<b>UWI:</b>
		<b>File Number:</b>	<b>Comment:</b>
		<b>Closure Distance:</b> 5170.98 US ft	<b>Closure Azimuth:</b> 149.01°
		<b>Vertical Section: Position of Origin (Relative to Slot centre)</b>	
		<b>+N/-S:</b> -0.00 US ft	<b>+E/-W:</b> 0.00 US ft <b>Az:</b> 149.19°

<b>Drill floor: Survey Name:</b> Definitive Survey			
<b>Rig Height (Drill Floor):</b> 26.00 US ft	<b>Elevation above MSL:</b> 1302.20 US ft	<b>Inclination:</b> 0.00°	<b>Azimuth:</b> 0.00°

RECEIVED  
Office of Oil and Gas  
AUG 30 2018

### Survey Name: Definitive Survey

<b>Date:</b> 28/Dec/2017	<b>Survey Tool:</b> See Survey Tool Ranges below.	<b>Comment:</b>	<b>Company:</b>
--------------------------	---	-----------------	-----------------

WVD  
Department of  
Environmental Protection

### Magnetic Model:

<b>Model Name:</b> HDGM	<b>Date:</b> 30/Jan/2018	<b>Field Strength:</b> 52671.0nT	<b>Declination:</b> -8.13° <b>Dip:</b> 67.42°
-------------------------	--------------------------	----------------------------------	---

### Tie Point:

<b>MD:</b> 0.00 US ft	<b>Inclination:</b> 0.00°	<b>Azimuth:</b> 0.00°	<b>TVD:</b> -0.00 US ft	<b>North Offset:</b> -0.00 US ft	<b>East Offset:</b> 0.00 US ft
-----------------------	---------------------------	-----------------------	-------------------------	----------------------------------	--------------------------------

### Survey Tool Ranges:

Name	Start MD(USFt)	End MD(USFt)	Source Survey
MFAC_US_V2	0.00	510.00	WFT MFAC_01
MWD	510.00	605.00	WFT MFAC_02
MWD	605.00	1962.00	WFT MWD_03
MWD	1962.00	5866.00	WFT MWD_04
MWD	5866.00	6815.00	WFT MWD_05
MWD	6815.00	6925.00	WFT MWD_07
MWD	6925.00	11662.00	WFT MWD_08

Wellpath created using minimum curvature.

## SLI Survey Report

Survey Points: (Relative to Slot centre)(TVD relative to Drill Floor)										
MD (US ft)	Inc (°)	Az (°)	TVD (US ft)	VS (US ft)	N.Offset (US ft)	E.Offset (US ft)	Latitude (° ' ")	Longitude (° ' ")	DLS (%/100US ft)	Comment
0.00	0.00	0.00	-0.00	-0.00	-0.00	0.00	40.071763	-80.625129	0.00	
227.00	0.51	326.45	227.00	-1.01	0.84	-0.56	40.071765	-80.625131	0.22	
317.00	0.21	327.82	317.00	-1.57	1.32	-0.87	40.071767	-80.625132	0.33	
414.00	0.02	3.39	413.99	-1.77	1.48	-0.96	40.071767	-80.625132	0.20	
510.00	0.08	230.45	509.99	-1.77	1.46	-1.01	40.071767	-80.625133	0.10	
605.00	0.36	124.67	604.99	-1.49	1.24	-0.82	40.071766	-80.625132	0.41	
782.00	0.90	103.04	781.98	-0.02	0.61	0.99	40.071765	-80.625125	0.33	
879.00	1.63	83.61	878.96	1.08	0.60	3.11	40.071765	-80.625118	0.86	
975.00	2.57	54.66	974.90	1.47	1.99	6.22	40.071768	-80.625107	1.45	
1071.00	4.17	39.22	1070.73	0.11	5.94	10.18	40.071779	-80.625093	1.90	
1167.00	6.44	33.09	1166.31	-3.45	13.16	15.33	40.071799	-80.625074	2.43	
1264.00	8.68	31.54	1262.46	-9.24	23.96	22.13	40.071829	-80.625050	2.32	
1360.00	9.51	29.35	1357.26	-16.54	37.04	29.81	40.071864	-80.625022	0.94	
1456.00	10.76	28.32	1451.76	-25.09	51.84	37.94	40.071905	-80.624993	1.32	
1552.00	11.78	30.87	1545.90	-34.33	68.14	47.22	40.071950	-80.624959	1.18	
1648.00	11.95	29.10	1639.85	-43.96	85.24	57.09	40.071996	-80.624924	0.42	
1744.00	11.72	30.86	1733.81	-53.57	102.29	66.92	40.072043	-80.624888	0.45	
1841.00	11.27	31.97	1828.87	-62.58	118.79	76.99	40.072088	-80.624852	0.52	
1936.00	11.47	31.13	1922.00	-71.27	134.75	86.79	40.072132	-80.624817	0.27	
1962.00	10.51	32.16	1947.53	-73.56	138.97	89.39	40.072144	-80.624807	3.77	
2093.00	9.41	29.64	2076.55	-84.27	158.40	101.05	40.072197	-80.624765	0.90	
2157.00	8.85	28.81	2139.74	-89.34	167.26	106.01	40.072221	-80.624748	0.90	
2254.00	8.81	36.81	2235.59	-95.95	179.74	114.05	40.072255	-80.624719	1.27	
2350.00	8.40	35.90	2330.51	-101.52	191.31	122.57	40.072287	-80.624688	0.45	
2447.00	8.08	38.76	2426.51	-106.70	202.36	130.99	40.072317	-80.624658	0.54	
2543.00	8.06	38.66	2521.56	-111.41	212.88	139.42	40.072346	-80.624627	0.03	
2639.00	9.45	41.40	2616.44	-116.18	224.05	148.84	40.072377	-80.624594	1.51	
2736.00	9.92	38.71	2712.06	-121.53	236.54	159.33	40.072411	-80.624556	0.67	
2832.00	9.46	36.92	2806.69	-127.41	249.30	169.24	40.072446	-80.624520	0.57	
2929.00	9.30	36.01	2902.39	-133.52	262.01	178.63	40.072480	-80.624487	0.22	
3025.00	8.44	36.10	2997.24	-139.33	273.98	187.35	40.072513	-80.624455	0.90	
3120.00	9.11	44.33	3091.13	-144.00	284.99	196.71	40.072543	-80.624422	1.50	
3217.00	9.15	43.73	3186.90	-148.02	296.06	207.41	40.072574	-80.624383	0.11	
3313.00	8.87	39.75	3281.72	-152.52	307.27	217.42	40.072604	-80.624347	0.71	
3409.00	10.44	38.12	3376.36	-158.11	319.80	227.52	40.072639	-80.624311	1.66	
3505.00	11.27	37.96	3470.64	-164.63	334.04	238.66	40.072678	-80.624271	0.87	
3602.00	10.66	34.13	3565.87	-171.86	348.94	249.52	40.072718	-80.624232	0.98	
3698.00	11.20	33.95	3660.13	-179.60	364.02	259.71	40.072760	-80.624195	0.56	
3794.00	10.65	32.09	3754.39	-187.61	379.27	269.63	40.072801	-80.624159	0.68	
3891.00	10.73	30.48	3849.70	-196.03	394.65	278.97	40.072844	-80.624126	0.32	
3987.00	9.84	29.91	3944.16	-204.34	409.46	287.60	40.072884	-80.624095	0.93	
4084.00	9.80	37.78	4039.74	-211.40	423.17	296.79	40.072922	-80.624062	1.38	
4180.00	9.70	40.03	4134.36	-217.04	435.82	306.99	40.072956	-80.624025	0.41	
4276.00	9.40	36.79	4229.03	-222.68	448.29	316.89	40.072990	-80.623990	0.64	
4372.00	10.12	33.08	4323.64	-229.38	461.64	326.19	40.073027	-80.623956	1.00	
4468.00	9.98	32.78	4418.17	-236.79	475.70	335.30	40.073065	-80.623923	0.16	
4564.00	9.58	34.65	4512.77	-243.80	489.26	344.34	40.073103	-80.623891	0.53	
4660.00	9.36	33.78	4607.46	-250.47	502.32	353.23	40.073138	-80.623859	0.27	
4757.00	9.97	36.75	4703.09	-257.06	515.61	362.64	40.073175	-80.623825	0.81	
4853.00	10.25	35.80	4797.59	-263.62	529.20	372.60	40.073212	-80.623789	0.34	
4950.00	10.20	35.65	4893.05	-270.48	543.17	382.66	40.073250	-80.623753	0.06	
5046.00	10.79	39.74	4987.45	-276.86	556.99	393.36	40.073288	-80.623715	0.99	
5141.00	10.05	37.10	5080.88	-282.94	570.44	404.04	40.073325	-80.623676	0.93	
5237.00	9.94	35.52	5175.43	-289.42	583.87	413.91	40.073362	-80.623641	0.31	
5334.00	11.18	34.20	5270.78	-296.75	598.46	424.06	40.073402	-80.623604	1.30	
5382.00	10.66	33.26	5317.91	-300.66	606.02	429.11	40.073422	-80.623586	1.15	
5430.00	10.27	32.38	5365.11	-304.53	613.34	433.84	40.073442	-80.623569	0.88	
5478.00	9.77	32.09	5412.38	-308.31	620.41	438.29	40.073462	-80.623553	1.05	

RECEIVED  
Office of Oil and Gas

AUG 30 2018

WV Department of  
Environmental Protection



## SD Survey Reprint

Survey Points: (Relative to Slot centre) (TVD relative to Drill Floor)											
MD (US ft)	Inc (°)	Az (°)	TVD (US ft)	VS (US ft)	N.Offset (US ft)	E.Offset (US ft)	Latitude (° ' ")	Longitude (° ' ")	DLS (#/100US ft)	Comment	
5526.00	7.40	37.72	5459.84	-311.30	626.31	442.35	40.073478	-80.623538	5.23		
5574.00	6.22	46.66	5507.50	-312.99	630.54	446.13	40.073489	-80.623525	3.30		
5623.00	5.96	66.15	5556.23	-313.26	633.39	450.39	40.073497	-80.623510	4.23		
5671.00	7.36	88.46	5603.91	-311.45	634.48	455.74	40.073500	-80.623490	6.07		
5717.00	8.27	97.71	5649.49	-307.95	634.11	461.96	40.073499	-80.623468	3.37		
5770.00	7.27	104.70	5702.00	-303.19	632.75	468.99	40.073495	-80.623443	2.59		
5818.00	6.74	127.48	5749.65	-298.40	630.26	474.16	40.073488	-80.623425	5.85		
5866.00	7.74	149.55	5797.28	-292.55	625.76	478.03	40.073476	-80.623411	6.11		
5886.00	8.64	151.71	5817.07	-289.70	623.28	479.43	40.073469	-80.623406	4.75		
5918.00	12.00	141.61	5848.55	-284.00	618.55	482.63	40.073456	-80.623394	11.89		
5950.00	15.81	137.66	5879.61	-276.43	612.72	487.64	40.073440	-80.623377	12.26		
5998.00	20.88	136.20	5925.16	-261.68	601.71	497.97	40.073410	-80.623340	10.60		
6046.00	24.31	137.75	5969.47	-243.65	588.22	510.54	40.073372	-80.623295	7.25		
6094.00	27.88	139.09	6012.57	-222.91	572.42	524.53	40.073329	-80.623245	7.54		
6143.00	32.45	139.92	6054.92	-198.65	553.69	540.51	40.073277	-80.623189	9.37		
6191.00	37.63	143.55	6094.21	-171.33	532.03	557.52	40.073218	-80.623128	11.63		
6239.00	42.87	147.51	6130.84	-140.40	506.45	575.01	40.073147	-80.623066	12.14		
6287.00	46.30	150.49	6165.03	-106.72	477.57	592.34	40.073068	-80.623004	8.37		
6335.00	50.72	149.34	6196.82	-70.78	446.47	610.37	40.072982	-80.622941	9.38		
6383.00	55.23	153.13	6225.72	-32.50	412.88	628.76	40.072890	-80.622875	11.31		
6431.00	60.94	151.79	6251.09	8.16	376.77	647.61	40.072790	-80.622808	12.13		
6479.00	66.94	151.94	6272.16	51.21	338.76	667.93	40.072686	-80.622736	12.50		
6526.00	71.54	152.85	6288.82	95.08	299.83	688.28	40.072578	-80.622664	9.95		
6574.00	73.83	152.71	6303.10	140.81	259.08	709.24	40.072466	-80.622590	4.78		
6623.00	76.19	155.09	6315.78	187.97	216.58	730.06	40.072349	-80.622516	6.72		
6671.00	79.07	157.13	6326.06	234.51	173.72	749.04	40.072231	-80.622449	7.30		
6719.00	82.15	156.09	6333.89	281.46	130.26	767.84	40.072112	-80.622382	6.76		
6767.00	86.85	155.10	6338.49	328.93	86.76	787.58	40.071992	-80.622313	10.00		
6815.00	89.81	156.43	6339.89	376.59	43.01	807.27	40.071872	-80.622243	6.76		
6925.00	89.51	154.07	6340.54	485.96	-56.87	853.32	40.071597	-80.622080	2.16		
7021.00	89.45	154.19	6341.42	581.60	-143.25	895.20	40.071359	-80.621931	0.14		
7116.00	89.44	157.68	6342.34	675.92	-229.97	933.93	40.071121	-80.621794	3.67		
7213.00	89.51	161.68	6343.22	771.28	-320.91	967.61	40.070870	-80.621675	4.12		
7309.00	89.38	159.67	6344.15	865.34	-411.50	999.37	40.070621	-80.621563	2.10		
7406.00	89.57	156.95	6345.04	961.10	-501.62	1035.22	40.070373	-80.621436	2.81		
7502.00	89.26	159.13	6346.02	1055.95	-590.64	1071.12	40.070129	-80.621309	2.29		
7598.00	89.01	159.77	6347.47	1150.40	-680.52	1104.81	40.069881	-80.621190	0.72		
7694.00	88.89	159.30	6349.23	1244.82	-770.45	1138.37	40.069634	-80.621072	0.51		
7790.00	88.89	157.41	6351.09	1339.57	-859.66	1173.77	40.069389	-80.620947	1.97		
7886.00	89.08	154.99	6352.79	1434.83	-947.47	1212.50	40.069147	-80.620809	2.53		
7982.00	88.95	158.67	6354.44	1529.95	-1035.70	1250.26	40.068904	-80.620676	3.84		
8078.00	89.14	157.61	6356.04	1624.76	-1124.79	1286.00	40.068659	-80.620549	1.12		
8175.00	89.51	158.11	6357.19	1720.65	-1214.63	1322.56	40.068412	-80.620420	0.64		
8271.00	90.06	157.84	6357.55	1815.52	-1303.62	1358.56	40.068167	-80.620293	0.64		
8367.00	90.12	160.40	6357.40	1910.07	-1393.31	1392.77	40.067921	-80.620172	2.67		
8464.00	90.06	158.06	6357.24	2005.58	-1484.00	1427.16	40.067671	-80.620050	2.41		
8560.00	90.31	158.58	6356.93	2100.36	-1573.21	1462.63	40.067426	-80.619925	0.60		
8656.00	89.88	155.10	6356.77	2195.49	-1661.45	1500.38	40.067183	-80.619791	3.65		
8753.00	89.01	157.54	6357.71	2291.73	-1750.28	1539.33	40.066939	-80.619653	2.67		
8848.00	89.26	158.57	6359.15	2385.58	-1838.38	1574.83	40.066696	-80.619528	1.12		
8944.00	89.26	160.12	6360.39	2480.06	-1928.20	1608.69	40.066449	-80.619408	1.61		
9040.00	89.26	156.12	6361.63	2574.87	-2017.26	1644.46	40.066204	-80.619282	4.17		
9136.00	89.51	156.43	6362.66	2670.13	-2105.14	1683.08	40.065962	-80.619145	0.41		
9231.00	89.57	157.97	6363.42	2764.20	-2192.71	1719.89	40.065722	-80.619015	1.62		
9328.00	89.75	157.72	6364.00	2860.09	-2282.55	1756.47	40.065474	-80.618886	0.32		
9424.00	89.51	157.07	6364.62	2955.10	-2371.17	1793.37	40.065231	-80.618755	0.72		
9520.00	89.45	155.70	6365.49	3050.34	-2459.13	1831.82	40.064989	-80.618619	1.43		
9616.00	89.69	156.87	6366.21	3145.60	-2547.02	1870.43	40.064747	-80.618482	1.24		
9712.00	89.75	156.44	6366.68	3240.78	-2635.16	1908.47	40.064504	-80.618348	0.45		

RECEIVED  
Office of Oil and Gas  
AUG 30 2018  
WV Department of  
Environmental Protection

## SD Survey Report

Survey Points: (Relative to Slot centre)(TVD relative to Drill Floor)										
MD (US ft)	Inc (°)	Az (°)	TVD (US ft)	VS (US ft)	N.Offset (US ft)	E.Offset (US ft)	Latitude (° '' ''')	Longitude (° '' ''')	DLS (°/100US ft)	Comment
9807.00	89.88	158.41	6366.99	3334.80	-2722.87	1944.94	40.064263	-80.618219	2.08	
9904.00	89.94	158.41	6367.14	3430.54	-2813.07	1980.63	40.064015	-80.618092	0.06	
10000.00	90.43	157.32	6366.83	3525.44	-2901.99	2016.80	40.063770	-80.617965	1.24	
10097.00	90.43	155.92	6366.10	3621.62	-2991.02	2055.29	40.063525	-80.617828	1.44	
10193.00	90.49	158.48	6365.33	3716.67	-3079.51	2092.49	40.063282	-80.617697	2.67	
10289.00	90.18	157.43	6364.77	3811.55	-3168.49	2128.52	40.063037	-80.617569	1.14	
10385.00	90.31	156.85	6364.36	3906.62	-3256.95	2165.82	40.062794	-80.617437	0.62	
10481.00	90.25	156.78	6363.89	4001.77	-3345.19	2203.61	40.062551	-80.617304	0.10	
10576.00	89.94	159.30	6363.73	4095.63	-3433.29	2239.13	40.062309	-80.617178	2.67	
10673.00	89.69	157.85	6364.04	4191.33	-3523.59	2274.56	40.062060	-80.617053	1.52	
10768.00	89.69	155.25	6364.56	4285.54	-3610.73	2312.37	40.061821	-80.616919	2.74	
10864.00	90.00	154.73	6364.82	4381.04	-3697.73	2352.95	40.061581	-80.616775	0.63	
10959.00	89.94	157.35	6364.87	4475.36	-3784.53	2391.53	40.061342	-80.616639	2.76	
11055.00	89.69	155.83	6365.18	4570.55	-3872.63	2429.67	40.061100	-80.616504	1.60	
11151.00	89.26	154.56	6366.06	4666.02	-3959.77	2469.94	40.060860	-80.616361	1.40	
11248.00	89.38	156.26	6367.21	4762.44	-4047.96	2510.30	40.060618	-80.616218	1.76	
11344.00	89.51	157.11	6368.14	4857.61	-4136.12	2548.29	40.060375	-80.616084	0.90	
11439.00	89.75	158.57	6368.75	4951.52	-4224.09	2584.13	40.060133	-80.615957	1.56	
11535.00	89.45	160.66	6369.42	5045.93	-4314.07	2617.56	40.059885	-80.615839	2.20	
11631.00	90.00	158.42	6369.88	5140.36	-4404.01	2651.12	40.059638	-80.615721	2.40	Last WFT SVY
11662.00	90.00	158.42	6369.88	5170.96	-4432.84	2662.52	40.059559	-80.615680	0.00	Proj. to TD

RECEIVED  
Office of Oil and Gas  
AUG 30 2018  
WV Department of  
Environmental Protection