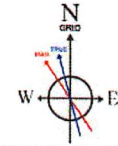


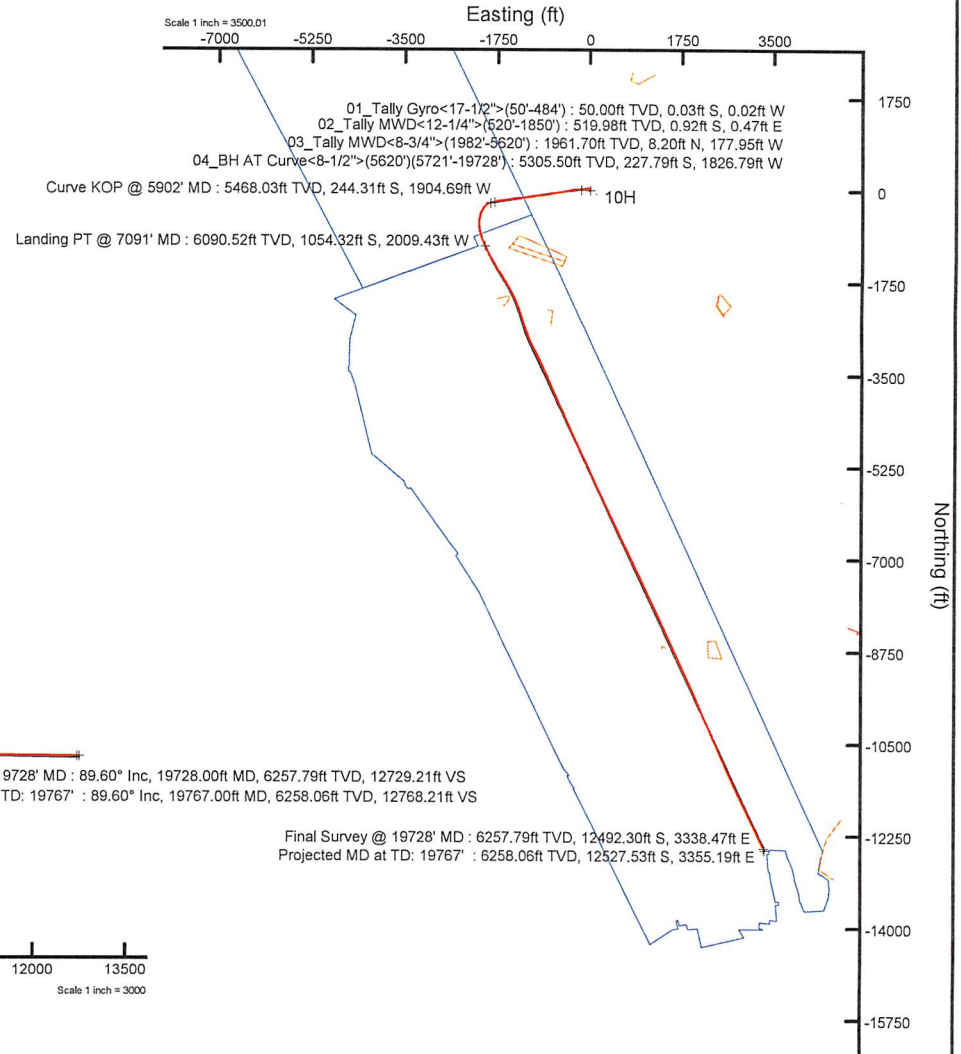
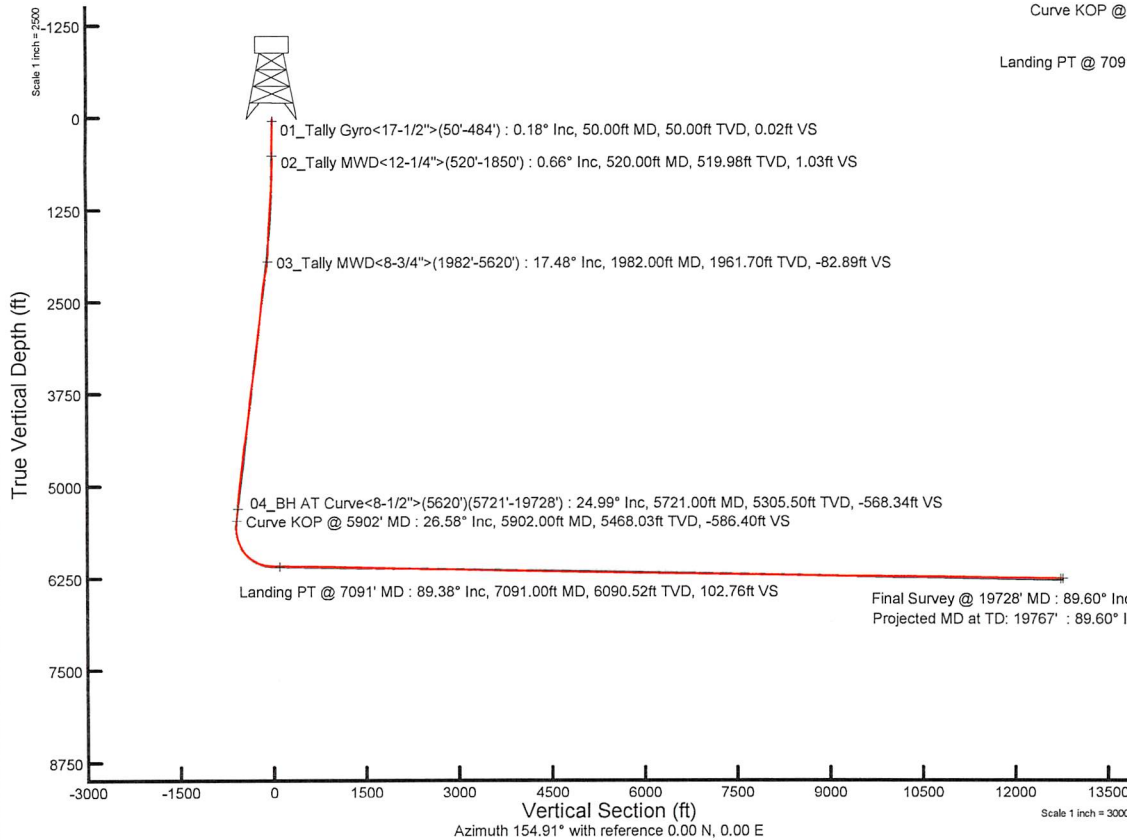
Plot reference wellbore is Shannon Fields OHI 10H AWP Plot 19767 MD	Grid System: NAD83 / UTM Zone 17 North, US feet
True vertical depths are referenced to SDC 40 (KB)	North Reference: Grid North
Reference wellbore measured depths are referenced to SDC 40 (KB)	Scale: True distance
SDC 40 (KB) to Mean Sea Level: 1233.92 feet	Coordinates are in feet referenced to SDC
Mean Sea Level to Ground level (At Slot: 10H): -1233.92 feet	Depths are in feet
Other wellbore MDs are referenced to each pattern's default MD datum	Created by: asurda on 2022-11-03; Database: WA_MPL_EASTERNUS_Dept

API: 47-069-00338-0000
BH Job #: 111469797
Rig: SDC 40
Duration: 10/30/2022-11/01/2022



HOGM2022v1.0 (1900.0 to 2023.0) Dip: 67.01° Field: 52106.5 nT
Magnetic North is 8.09 degrees West of True North (at 10/18/2022)
Grid North is 0.22 degrees East of True North
To correct azimuth from True to Grid subtract 0.22 degrees
To correct azimuth from Magnetic to Grid subtract 8.31 degrees

Location Information									
Facility Name	Grid East (US ft)	Grid North (US ft)	Latitude	Longitude					
Shannon Fields OHI Pad	1736232.340	1455962.680	40°05'17.7900"N	80°39'26.7200"W					
Slot	Local N (ft)	Local E (ft)	Grid East (US ft)	Grid North (US ft)	Latitude	Longitude			
10H	50.16	-107.68	1736124.700	14559112.620	40°05'18.2898"N	80°39'28.1030"W			
SDC 40 (KB) to Ground level (At Slot: 10H)					26ft				
Mean Sea Level to Ground level (At Slot: 10H)					-1233.92ft				
SDC 40 (KB) to Mean Sea Level					1259.92ft				
Bottom Hole Location									
MD (ft)	Inc (°)	Az (°)	TVD (ft)	Local N (ft)	Local E (ft)	Grid East (US ft)	Grid North (US ft)	Latitude	Longitude
19767.00	89.600	154.620	6258.06	-12527.53	3355.19	1739478.57	14546390.19	40°03'14.3615"N	80°38'45.3758"W





Well Name:

Shannon Fields OHI 10H

47069003380000

LITHOLOGY/FORMATION	TOP DEPTH, MD (FT)	TOP DEPTH, TVD (FT)	BOTTOM DEPTH, MD (FT)	BOTTOM DEPTH, TVD (FT)	QUANTITY AND TYPE OF FLUID
Base of Fresh Water	0.00	0.00	352.00	352.00	
Top of Salt Water	602.00	602.00	NA	NA	
Pittsburgh Coal	504.00	504.00	509.00	509.00	
Pottsville (ss)	683.00	683.00	739.00	739.00	
Raven Cliff (ss)	954.00	954.00	1158.00	1156.00	
Maxton (ss)	1402.00	1398.00	1543.00	1535.00	
Big Injun (ss)	1543.00	1535.00	1869.00	1853.00	
Berea (siltstone)	2136.00	2104.00	2175.00	2140.00	
Rhinestreet (shale)	6059.00	5607.00	6228.00	5749.00	
Cashaqua (shale)	6228.00	5749.00	6304.00	5804.00	
Middlesex (shale)	6304.00	5804.00	6415.00	5882.00	
Burket (shale)	6415.00	5882.00	6435.00	5895.00	
Tully (ls)	6435.00	5895.00	6522.00	5949.00	
Mahantango (shale)	6522.00	5949.00	6714.00	6036.00	
Marcellus (shale)	6714.00	6036.00	NA	NA	GAS



Actual Wellpath Report
Shannon Fields OHI 10H AWP Proj: 19767' MD
Page n of nn

**REFERENCE WELLPATH IDENTIFICATION**

Operator	SWN PRODUCTION COMPANY, LLC	Well	Shannon Fields OHI 10H
Field	Ohio	API	47-069-00338-0000
Facility	Shannon Fields OHI Pad	Wellbore	Shannon Fields OHI 10H AWP
Slot	10H		

REPORT SETUP INFORMATION

Projection System	NAD83 / UTM Zone 17 North, US feet	Software System	WellArchitect® 6.0
North Reference	Grid	User	Scurdan
Scale	0.999610	Report Generated	11/3/2022 at 4:26:32 PM
Convergence at slot	0.22° East	Database	WA_MPL_EASTERLUS_Defn

WELLPATH LOCATION

	Local coordinates		Grid coordinates		Geographic coordinates	
	North[ft]	East[ft]	Easting[US ft]	Northing[US ft]	Latitude	Longitude
Slot Location	50.16	-107.68	1736124.70	14559112.82	40°05'18.2898"N	80°39'28.1030"W
Facility Reference Pt			1736232.34	14559062.68	40°05'17.7900"N	80°39'26.7200"W
Field Reference Pt			0.00	0.00	0°00'0.0000"	85°29'19.4780"W

WELLPATH DATUM

Calculation method	Minimum curvature	SDC 40 (KB) to Facility Vertical Datum	1259.92ft
Horizontal Reference Pt	Slot	SDC 40 (KB) to Mean Sea Level	1259.92ft
Vertical Reference Pt	SDC 40 (KB)	SDC 40 (KB) to Ground Level at Slot (10H)	26.00ft
MD Reference Pt	SDC 40 (KB)	Section Origin	N 0.00, E 0.00 ft
Field Vertical Reference	Mean Sea Level	Section Azimuth	154.91°

09/15/2023



Actual Wellpath Report
 Shannon Fields OHI 10H AWP Proj: 19767' MD
 Page n of nn



REFERENCE WELLPATH IDENTIFICATION			
Operator	SWN PRODUCTION COMPANY, LLC	Well	Shannon Fields OHI 10H
Field	Ohio	API	47-069-00338-0000
Facility	Shannon Fields OHI Pad	Wellbore	Shannon Fields OHI 10H AWP
Slot	10H		

WELLPATH DATA (215 stations) † = interpolated, ‡ = extrapolated station															
MD [ft]	Inclination [°]	Azimuth [°]	TVD [ft]	Vert Sect [ft]	North [ft]	East [ft]	Grid East [US ft]	Grid North [US ft]	Latitude	Longitude	Closure Dist [ft]	Closure Dir [°]	DLS ["/100ft]	Build Rate ["/100ft]	Turn Rate ["/100ft]
0.00†	0.00	218.070	0.00	0.00	0.00	0.00	1736124.70	14559112.82	40°05'18.2898"N	80°39'28.1030"W	0.00	0.000	0.00	0.00	0.00
26.00	0.00	218.070	26.00	0.00	0.00	0.00	1736124.70	14559112.82	40°05'18.2898"N	80°39'28.1030"W	0.00	0.000	0.00	0.00	0.00
50.00	0.18	218.070	50.00	0.02	-0.03	-0.02	1736124.68	14559112.79	40°05'18.2895"N	80°39'28.1033"W	0.04	218.070	0.75	0.75	0.00
100.00	0.40	141.920	100.00	0.22	-0.23	0.04	1736124.74	14559112.59	40°05'18.2875"N	80°39'28.1025"W	0.23	171.069	0.79	0.44	-152.30
150.00	0.54	158.370	150.00	0.63	-0.59	0.23	1736124.93	14559112.23	40°05'18.2840"N	80°39'28.1001"W	0.63	158.508	0.39	0.28	32.90
200.00	0.54	42.300	200.00	0.77	-0.63	0.48	1736125.18	14559112.19	40°05'18.2836"N	80°39'28.0969"W	0.79	142.936	1.83	0.00	-232.14
250.00	0.80	329.740	249.99	0.33	-0.15	0.46	1736125.16	14559112.67	40°05'18.2883"N	80°39'28.0971"W	0.48	108.596	1.64	0.52	-145.12
300.00	0.48	199.270	299.99	0.14	-0.05	0.21	1736124.91	14559112.77	40°05'18.2893"N	80°39'28.1002"W	0.22	103.303	2.34	-0.64	-260.94
350.00	0.66	100.550	349.99	0.45	-0.30	0.43	1736125.13	14559112.52	40°05'18.2868"N	80°39'28.0975"W	0.52	125.140	1.75	0.36	-197.44
400.00	0.62	328.350	399.99	0.35	-0.12	0.57	1736125.27	14559112.70	40°05'18.2886"N	80°39'28.0957"W	0.58	102.239	2.34	-0.08	-264.40
450.00	0.51	170.320	449.99	0.30	-0.11	0.46	1736125.16	14559112.71	40°05'18.2887"N	80°39'28.0970"W	0.48	103.616	2.22	-0.22	-316.06
484.00	0.74	179.940	483.99	0.64	-0.48	0.49	1736125.19	14559112.34	40°05'18.2850"N	80°39'28.0967"W	0.69	134.488	0.74	0.68	28.29
520.00	0.66	185.350	519.98	1.03	-0.92	0.47	1736125.17	14559111.90	40°05'18.2807"N	80°39'28.0970"W	1.03	152.904	0.29	-0.22	15.03
592.00	0.14	144.450	591.98	1.48	-1.40	0.48	1736125.18	14559111.42	40°05'18.2759"N	80°39'28.0968"W	1.49	161.014	0.78	-0.72	-56.81
682.00	0.75	21.730	681.98	1.18	-0.95	0.77	1736125.46	14559111.87	40°05'18.2804"N	80°39'28.0932"W	1.22	141.053	0.93	0.68	-136.36
774.00	2.17	8.110	773.95	-0.69	1.34	1.23	1736125.93	14559114.16	40°05'18.3030"N	80°39'28.0870"W	1.82	42.703	1.58	1.54	-14.80
865.00	3.48	358.020	864.84	-4.67	5.80	1.38	1736126.08	14559118.62	40°05'18.3471"N	80°39'28.0849"W	5.97	13.391	1.53	1.44	-11.09
956.00	4.89	352.150	955.59	-10.91	12.41	0.76	1736125.46	14559125.22	40°05'18.4124"N	80°39'28.0926"W	12.43	3.489	1.62	1.55	-6.45
1047.00	5.52	329.880	1046.22	-18.98	20.03	-1.97	1736122.73	14559132.85	40°05'18.4879"N	80°39'28.1273"W	20.13	354.384	2.31	0.69	-24.47
1138.00	5.98	305.890	1136.78	-27.49	26.60	-8.01	1736116.70	14559139.41	40°05'18.5530"N	80°39'28.2047"W	27.78	343.247	2.67	0.51	-26.36
1229.00	7.43	284.450	1227.17	-35.38	30.85	-17.55	1736107.16	14559143.66	40°05'18.5953"N	80°39'28.3272"W	35.49	330.367	3.15	1.59	-23.56
1320.00	9.60	272.830	1317.17	-42.68	32.69	-30.83	1736093.89	14559145.50	40°05'18.6140"N	80°39'28.4980"W	44.93	316.682	3.03	2.38	-12.77
1410.00	11.51	267.530	1405.64	-49.65	32.68	-47.29	1736077.42	14559145.48	40°05'18.6145"N	80°39'28.7099"W	57.48	304.640	2.38	2.12	-5.89
1501.00	13.31	264.050	1494.51	-56.57	31.20	-66.79	1736057.94	14559144.01	40°05'18.6006"N	80°39'28.9607"W	73.71	295.039	2.14	1.98	-3.82
1592.00	13.64	256.800	1583.01	-62.22	27.66	-87.65	1736037.08	14559140.47	40°05'18.5665"N	80°39'29.2294"W	91.91	287.515	1.89	0.36	-7.97
1683.00	13.03	252.400	1671.56	-65.77	22.11	-107.88	1736016.86	14559134.92	40°05'18.5124"N	80°39'29.4899"W	110.12	281.582	1.30	-0.67	-4.84
1773.00	12.40	252.380	1759.36	-68.35	16.12	-126.76	1735997.99	14559128.93	40°05'18.4539"N	80°39'29.7331"W	127.78	277.246	0.70	-0.70	-0.02
1850.00	13.29	257.670	1834.43	-71.38	11.72	-143.28	1735981.47	14559124.54	40°05'18.4111"N	80°39'29.9459"W	143.76	274.678	1.91	1.16	6.87
1982.00	17.48	269.200	1961.70	-82.89	8.20	-177.95	1735946.82	14559121.02	40°05'18.3776"N	80°39'30.3922"W	178.14	272.640	3.92	3.17	8.73
2072.00	21.73	275.340	2046.47	-96.90	9.57	-208.07	1735916.71	14559122.38	40°05'18.3922"N	80°39'30.7796"W	208.29	272.633	5.24	4.72	6.82

09/15/2023



Actual Wellpath Report
 Shannon Fields OHI 10H AWP Proj: 19767' MD
 Page n of nn



REFERENCE WELLPATH IDENTIFICATION				
Operator	SWN PRODUCTION COMPANY, LLC		Well	Shannon Fields OHI 10H
Field	Ohio		API	47-069-00338-0000
Facility	Shannon Fields OHI Pad		Wellbore	Shannon Fields OHI 10H AWP
Slot	10H			

WELLPATH DATA (215 stations)															
MD [ft]	Inclination [°]	Azimuth [°]	TVD [ft]	Vert Sect [ft]	North [ft]	East [ft]	Grid East [US ft]	Grid North [US ft]	Latitude	Longitude	Closure Dist [ft]	Closure Dir [°]	DLS [°/100ft]	Build Rate [°/100ft]	Turn Rate [°/100ft]
2163.00	26.230	271.020	2129.60	-114.29	11.49	-244.97	1735879.82	14559124.31	40°05'18.4127"N	80°39'31.2543"W	245.24	272.686	5.31	4.95	-4.75
2255.00	29.420	265.670	2210.97	-131.25	10.15	-287.85	1735836.96	14559122.97	40°05'18.4010"N	80°39'31.8060"W	288.03	272.019	4.40	3.47	-5.82
2346.00	31.010	260.720	2289.62	-145.56	4.68	-333.28	1735791.55	14559117.50	40°05'18.3487"N	80°39'32.3908"W	333.31	270.805	3.25	1.75	-5.44
2437.00	29.800	256.610	2368.11	-156.54	-4.34	-378.42	1735746.43	14559108.48	40°05'18.2613"N	80°39'32.9720"W	378.45	269.343	2.64	-1.33	-4.52
2531.00	29.150	257.380	2449.94	-166.22	-14.75	-423.48	1735701.38	14559098.08	40°05'18.1601"N	80°39'33.5523"W	423.74	268.005	0.80	-0.69	0.82
2621.00	27.830	257.870	2529.04	-175.66	-23.95	-465.42	1735659.47	14559088.88	40°05'18.0707"N	80°39'34.0923"W	466.03	267.054	1.49	-1.47	0.54
2712.00	25.820	259.080	2610.24	-185.28	-32.17	-505.65	1735619.25	14559080.66	40°05'17.9910"N	80°39'34.6103"W	506.67	266.360	2.29	-2.21	1.33
2804.00	26.020	261.820	2692.99	-196.05	-38.84	-545.29	1735579.62	14559074.00	40°05'17.9267"N	80°39'35.1207"W	546.68	265.926	1.32	0.22	2.98
2896.00	26.790	262.260	2775.39	-208.11	-44.50	-585.81	1735539.12	14559068.34	40°05'17.8722"N	80°39'35.6423"W	587.50	265.656	0.86	0.84	0.48
2986.00	26.930	263.070	2855.68	-220.51	-49.69	-626.14	1735498.80	14559063.15	40°05'17.8225"N	80°39'36.1615"W	628.11	265.462	0.44	0.16	0.90
3076.00	27.710	260.500	2935.65	-232.48	-55.60	-667.01	1735457.95	14559057.24	40°05'17.7656"N	80°39'36.6876"W	669.33	265.235	1.57	0.87	-2.86
3167.00	26.510	258.800	3016.65	-243.05	-63.04	-707.81	1735417.17	14559049.80	40°05'17.6936"N	80°39'37.2128"W	710.61	264.910	1.57	-1.32	-1.87
3258.00	25.250	257.070	3098.52	-252.01	-71.33	-746.65	1735378.35	14559041.52	40°05'17.6132"N	80°39'37.7130"W	750.05	264.543	1.61	-1.38	-1.90
3350.00	24.730	258.400	3181.91	-260.63	-79.59	-784.62	1735340.38	14559033.26	40°05'17.5330"N	80°39'38.2020"W	788.65	264.208	0.83	-0.57	1.45
3440.00	25.840	261.290	3263.29	-270.56	-86.35	-822.45	1735302.57	14559026.51	40°05'17.4676"N	80°39'38.6890"W	826.97	264.007	1.84	1.23	3.21
3531.00	27.490	262.750	3344.61	-282.58	-92.00	-862.89	1735262.14	14559020.86	40°05'17.4133"N	80°39'39.2096"W	867.79	263.914	1.95	1.81	1.60
3624.00	27.540	263.800	3427.09	-296.12	-97.03	-905.56	1735219.49	14559015.83	40°05'17.3652"N	80°39'39.7588"W	910.75	263.884	0.52	0.05	1.13
3805.00	26.530	266.000	3588.32	-324.21	-104.37	-987.49	1735137.60	14559008.49	40°05'17.2957"N	80°39'40.8133"W	992.99	263.967	0.79	-0.56	1.22
3987.00	25.670	263.300	3751.76	-351.28	-111.81	-1067.19	1735057.92	14559001.06	40°05'17.2253"N	80°39'41.8391"W	1073.03	264.019	0.81	-0.47	-1.48
4078.00	25.470	260.760	3833.85	-362.84	-117.25	-1106.08	1735019.05	14558995.62	40°05'17.1729"N	80°39'42.3398"W	1112.28	263.949	1.22	-0.22	-2.79
4169.00	25.580	258.840	3915.97	-372.91	-124.19	-1144.67	1734980.48	14558988.68	40°05'17.1058"N	80°39'42.8366"W	1151.39	263.808	0.92	0.12	-2.11
4259.00	25.430	260.160	3997.20	-382.67	-131.25	-1182.77	1734942.39	14558981.62	40°05'17.0374"N	80°39'43.3271"W	1190.03	263.668	0.65	-0.17	1.47
4350.00	25.050	260.480	4079.51	-392.98	-137.78	-1221.02	1734904.16	14558975.09	40°05'16.9744"N	80°39'43.8196"W	1228.77	263.562	0.44	-0.42	0.35
4440.00	24.830	261.380	4161.12	-403.46	-143.76	-1258.50	1734866.70	14558969.11	40°05'16.9166"N	80°39'44.3020"W	1266.68	263.483	0.49	-0.24	1.00
4531.00	25.710	263.800	4243.41	-415.26	-148.76	-1297.01	1734828.20	14558964.12	40°05'16.8687"N	80°39'44.7978"W	1305.52	263.457	1.49	0.97	2.66
4621.00	27.640	266.260	4323.83	-429.19	-152.23	-1337.26	1734787.97	14558960.65	40°05'16.8359"N	80°39'45.3158"W	1345.89	263.506	2.47	2.14	2.73
4712.00	29.370	267.430	4403.80	-445.42	-154.61	-1380.62	1734744.62	14558958.27	40°05'16.8140"N	80°39'45.8738"W	1389.25	263.610	2.00	1.90	1.29
4804.00	28.380	263.400	4484.37	-461.00	-158.13	-1424.88	1734700.38	14558954.75	40°05'16.7809"N	80°39'46.4434"W	1433.63	263.667	2.37	-1.08	-4.38
4894.00	26.840	259.270	4564.12	-472.82	-164.37	-1466.10	1734659.18	14558948.51	40°05'16.7207"N	80°39'46.9740"W	1475.28	263.603	2.73	-1.71	-4.59
4985.00	26.850	258.190	4645.32	-482.64	-172.41	-1506.40	1734618.89	14558940.48	40°05'16.6429"N	80°39'47.4929"W	1516.23	263.471	0.54	0.01	-1.19

09/15/2023



Actual Wellpath Report
Shannon Fields OHI 10H AWP Proj: 19767' MD
Page n of nn



REFERENCE WELLPATH IDENTIFICATION			
Operator	SWN PRODUCTION COMPANY, LLC	Well	Shannon Fields OHI 10H
Field	Ohio	API	47-069-00338-0000
Facility	Shannon Fields OHI Pad	Wellbore	Shannon Fields OHI 10H AWP
Slot	10H		

WELLPATH DATA (215 stations)															
MD [ft]	Inclination [°]	Azimuth [°]	TVD [ft]	Vert Sect [ft]	North [ft]	East [ft]	Grid East [US ft]	Grid North [US ft]	Latitude	Longitude	Closure Dist [ft]	Closure Dir [°]	DLS ["/100ft]	Build Rate ["/100ft]	Turn Rate ["/100ft]
5079.00	27.620	260.540	4728.90	-493.38	-180.33	-1548.67	1734576.64	14558932.56	40°05'16.5661"N	80°39'48.0372"W	1559.13	263.358	1.41	0.82	2.50
5169.00	26.550	261.470	4809.03	-504.74	-186.74	-1589.14	1734536.18	14558926.15	40°05'16.5043"N	80°39'48.5582"W	1600.08	263.298	1.28	-1.19	1.03
5260.00	25.300	261.550	4890.87	-516.10	-192.62	-1628.49	1734496.85	14558920.28	40°05'16.4477"N	80°39'49.0647"W	1639.84	263.254	1.37	-1.37	0.09
5350.00	25.940	260.740	4972.02	-526.98	-198.61	-1666.94	1734458.41	14558914.29	40°05'16.3899"N	80°39'49.5597"W	1678.73	263.205	0.81	0.71	-0.90
5441.00	27.170	261.820	5053.42	-538.45	-204.77	-1707.15	1734418.22	14558908.13	40°05'16.3305"N	80°39'50.0774"W	1719.39	263.160	1.45	1.39	1.19
5532.00	25.730	258.990	5134.89	-549.30	-211.50	-1747.11	1734378.28	14558901.40	40°05'16.2655"N	80°39'50.5918"W	1759.86	263.098	2.10	-1.58	-3.11
5620.00	25.640	258.060	5214.20	-558.28	-219.09	-1784.49	1734340.91	14558893.82	40°05'16.1919"N	80°39'51.0731"W	1797.88	263.001	0.47	-0.10	-1.06
5721.00	24.990	258.710	5305.50	-568.34	-227.79	-1826.79	1734298.63	14558885.12	40°05'16.1076"N	80°39'51.6178"W	1840.93	262.892	0.70	-0.64	0.64
5811.00	26.420	258.210	5386.59	-577.48	-235.60	-1865.03	1734260.40	14558877.31	40°05'16.0318"N	80°39'52.1102"W	1879.85	262.800	1.61	1.59	-0.56
5902.00	26.580	257.000	5468.03	-586.40	-244.31	-1904.69	1734220.76	14558868.60	40°05'15.9471"N	80°39'52.6208"W	1920.29	262.691	0.62	0.18	-1.33
5993.00	27.620	245.380	5549.10	-590.84	-257.69	-1943.73	1734181.73	14558855.23	40°05'15.8164"N	80°39'53.1238"W	1960.74	262.448	5.92	1.14	-12.77
6084.00	31.400	234.590	5628.33	-586.77	-280.24	-1982.27	1734143.21	14558832.69	40°05'15.5950"N	80°39'53.6208"W	2001.98	261.953	7.15	4.15	-11.86
6174.00	34.860	220.200	5703.81	-571.79	-313.53	-2018.05	1734107.44	14558799.41	40°05'15.2673"N	80°39'54.0827"W	2042.26	261.169	9.52	3.84	-15.99
6264.00	39.860	211.610	5775.37	-545.17	-357.80	-2049.81	1734075.70	14558755.16	40°05'14.8311"N	80°39'54.4934"W	2080.80	260.099	8.01	5.56	-9.54
6355.00	45.770	204.510	5842.13	-507.97	-412.38	-2078.66	1734046.86	14558700.60	40°05'14.2928"N	80°39'54.8673"W	2119.17	258.779	8.38	6.49	-7.80
6445.00	51.230	197.580	5901.79	-461.20	-475.26	-2102.66	1734022.87	14558637.75	40°05'13.6723"N	80°39'55.1791"W	2155.70	257.264	8.38	6.07	-7.72
6536.00	56.750	190.060	5955.32	-403.90	-546.67	-2120.03	1734005.50	14558586.37	40°05'12.9672"N	80°39'55.4061"W	2189.38	255.541	9.01	6.07	-8.24
6626.00	63.290	179.910	6000.35	-336.49	-624.16	-2126.57	1733998.97	14558488.91	40°05'12.2017"N	80°39'55.4939"W	2216.27	253.643	12.16	7.27	-11.28
6717.00	68.410	173.340	6037.61	-259.39	-706.95	-2121.59	1734003.94	14558406.14	40°05'11.3833"N	80°39'55.4339"W	2236.27	251.571	8.66	5.63	-7.22
6808.00	75.350	168.840	6065.90	-176.39	-792.31	-2108.14	1734017.39	14558320.82	40°05'10.5394"N	80°39'55.2650"W	2252.11	249.402	8.96	7.63	-4.95
6900.00	82.900	162.490	6083.27	-87.73	-879.72	-2085.73	1734039.78	14558233.45	40°05'9.6748"N	80°39'54.9810"W	2263.67	247.131	10.64	8.21	-6.90
6990.00	89.320	154.600	6089.38	1.77	-963.17	-2052.91	1734072.59	14558150.03	40°05'8.8489"N	80°39'54.5627"W	2267.63	244.865	11.28	7.13	-8.77
7091.00	89.380	154.390	6090.52	102.76	-1054.32	-2009.43	1734116.06	14558058.91	40°05'7.9465"N	80°39'54.0076"W	2269.22	242.315	0.22	0.06	-0.21
7187.00	88.920	153.980	6091.95	198.74	-1140.73	-1967.63	1734157.84	14557972.54	40°05'7.0910"N	80°39'53.4741"W	2274.38	239.897	0.64	-0.48	-0.43
7284.00	89.690	152.210	6093.12	295.68	-1227.22	-1923.74	1734201.72	14557886.08	40°05'6.2347"N	80°39'52.9136"W	2281.85	237.465	1.99	0.79	-1.82
7380.00	88.980	149.120	6094.24	391.40	-1310.89	-1876.71	1734248.72	14557802.44	40°05'5.4066"N	80°39'52.3127"W	2289.21	235.066	3.30	-0.74	-3.22
7476.00	90.180	148.830	6094.94	486.88	-1393.16	-1827.24	1734298.18	14557720.21	40°05'4.5913"N	80°39'51.6801"W	2297.76	232.677	1.29	1.25	-0.30
7573.00	89.480	148.590	6095.23	583.31	-1476.05	-1776.86	1734348.54	14557637.35	40°05'3.7703"N	80°39'51.0360"W	2309.97	230.283	0.76	-0.72	-0.25
7669.00	89.050	148.230	6096.46	678.68	-1557.81	-1726.58	1734398.80	14557555.62	40°05'2.9603"N	80°39'50.3931"W	2325.48	227.941	0.58	-0.45	-0.38
7765.00	89.200	148.360	6097.93	774.03	-1639.48	-1676.13	1734449.23	14557473.98	40°05'2.1515"N	80°39'49.7480"W	2344.63	225.633	0.21	0.16	0.14

09/15/2023



Actual Wellpath Report
Shannon Fields OHI 10H AWP Proj: 19767' MD
Page n of nn



REFERENCE WELLPATH IDENTIFICATION

Operator	SWN PRODUCTION COMPANY, LLC	Well	Shannon Fields OHI 10H
Field	Ohio	API	47-069-00338-0000
Facility	Shannon Fields OHI Pad	Wellbore	Shannon Fields OHI 10H AWP
Slot	10H		

WELLPATH DATA (215 stations)

MD [ft]	Inclination [°]	Azimuth [°]	TVD [ft]	Vert Sect [ft]	North [ft]	East [ft]	Grid East [US ft]	Grid North [US ft]	Latitude	Longitude	Closure Dist [ft]	Closure Dir [°]	DLS ["/100ft]	Build Rate ["/100ft]	Turn Rate ["/100ft]
7862.00	89.320	148.530	6099.18	870.41	-1722.13	-1625.37	1734499.97	14557391.37	40°05'1.3328"N	80°39'49.0990"W	2368.03	223.344	0.21	0.12	0.18
7958.00	89.200	148.870	6100.42	965.84	-1804.15	-1575.50	1734549.82	14557309.38	40°05'0.5204"N	80°39'48.4614"W	2395.24	221.130	0.38	-0.12	0.35
8055.00	87.940	148.920	6102.84	1062.27	-1987.17	-1525.41	1734599.89	14557226.38	40°04'59.6980"N	80°39'47.8210"W	2426.58	218.949	1.30	-1.30	0.05
8151.00	89.540	152.000	6104.95	1157.94	-1970.66	-1478.10	1734647.18	14557142.93	40°04'58.8712"N	80°39'47.2164"W	2463.39	216.872	3.61	1.67	3.21
8247.00	88.860	155.170	6106.29	1253.90	-2056.62	-1435.40	1734689.86	14557057.00	40°04'58.0202"N	80°39'46.6713"W	2508.00	214.913	3.38	-0.71	3.30
8344.00	89.020	156.450	6108.09	1350.87	-2145.09	-1395.66	1734729.59	14556968.57	40°04'57.1445"N	80°39'46.1643"W	2559.15	213.049	1.33	0.16	1.32
8440.00	88.830	158.100	6109.89	1446.76	-2233.62	-1358.58	1734766.65	14556880.08	40°04'56.2682"N	80°39'45.6916"W	2614.34	211.310	1.73	-0.20	1.72
8537.00	88.680	160.660	6112.00	1543.44	-2324.37	-1324.43	1734800.79	14556789.36	40°04'55.3701"N	80°39'45.2567"W	2675.22	209.675	2.64	-0.19	2.64
8634.00	88.740	162.170	6114.18	1639.79	-2416.29	-1293.52	1734831.68	14556697.48	40°04'54.4606"N	80°39'44.8636"W	2740.74	208.162	1.56	0.06	1.58
8730.00	88.920	161.560	6116.14	1735.06	-2507.50	-1263.65	1734861.54	14556606.30	40°04'53.5581"N	80°39'44.4837"W	2807.91	206.746	0.66	0.19	-0.64
8826.00	88.520	161.360	6118.29	1830.41	-2598.49	-1233.13	1734892.05	14556515.34	40°04'52.6578"N	80°39'44.0956"W	2876.25	205.387	0.47	-0.42	-0.21
8923.00	88.520	158.270	6120.79	1927.01	-2689.50	-1199.68	1734925.49	14556424.38	40°04'51.7572"N	80°39'43.6696"W	2944.93	204.040	3.18	0.00	-3.19
9019.00	89.050	159.700	6122.83	2022.74	-2779.09	-1165.26	1734959.90	14556334.82	40°04'50.8706"N	80°39'43.2312"W	3013.50	202.748	1.59	0.55	1.49
9116.00	88.680	156.740	6124.75	2119.55	-2869.14	-1129.28	1734995.86	14556244.81	40°04'49.9794"N	80°39'42.7728"W	3083.38	201.484	3.07	-0.28	-3.05
9212.00	88.920	151.740	6126.76	2215.49	-2955.55	-1087.58	1735037.54	14556158.43	40°04'49.1238"N	80°39'42.2405"W	3149.30	200.203	5.21	0.25	-5.21
9309.00	88.340	149.940	6129.08	2312.22	-3040.23	-1040.33	1735084.77	14556073.78	40°04'48.2853"N	80°39'41.6369"W	3213.30	198.890	1.95	-0.60	-1.86
9405.00	89.510	154.390	6130.88	2408.06	-3125.08	-995.53	1735129.56	14555988.96	40°04'47.4450"N	80°39'41.0646"W	3279.82	197.670	4.79	1.22	4.64
9502.00	88.890	155.870	6132.24	2505.05	-3213.07	-954.74	1735170.33	14555901.00	40°04'46.5739"N	80°39'40.5442"W	3351.92	196.549	1.65	-0.64	1.53
9598.00	89.010	155.640	6134.00	2601.02	-3300.59	-915.33	1735209.73	14555813.52	40°04'45.7076"N	80°39'40.0414"W	3425.16	195.500	0.27	0.13	-0.24
9695.00	89.290	155.980	6135.43	2698.00	-3389.07	-875.58	1735249.46	14555725.08	40°04'44.8318"N	80°39'39.5345"W	3500.34	194.486	0.45	0.29	0.35
9791.00	89.080	155.650	6136.80	2793.98	-3476.63	-836.26	1735288.77	14555637.55	40°04'43.9650"N	80°39'39.0329"W	3575.79	193.525	0.41	-0.22	-0.34
9888.00	89.540	157.350	6137.97	2890.93	-3565.58	-797.58	1735327.43	14555548.64	40°04'43.0846"N	80°39'38.5397"W	3653.69	192.609	1.82	0.47	1.75
9984.00	88.710	156.300	6139.43	2986.86	-3653.82	-759.81	1735365.19	14555460.43	40°04'42.2111"N	80°39'38.0581"W	3731.98	191.747	1.39	-0.86	-1.09
10081.00	88.860	155.970	6141.49	3083.82	-3742.50	-720.57	1735404.41	14555371.78	40°04'41.3333"N	80°39'37.5577"W	3811.24	190.898	0.37	0.15	-0.34
10177.00	88.680	155.750	6143.55	3179.78	-3830.09	-681.32	1735443.65	14555284.23	40°04'40.4663"N	80°39'37.0571"W	3890.21	190.087	0.30	-0.19	-0.23
10274.00	88.950	156.040	6145.56	3276.75	-3918.61	-641.71	1735483.24	14555195.74	40°04'39.5900"N	80°39'36.5519"W	3970.81	189.300	0.41	0.28	0.30
10370.00	89.020	155.870	6147.26	3372.72	-4006.27	-602.60	1735522.33	14555108.12	40°04'38.7223"N	80°39'36.0531"W	4051.33	188.554	0.19	0.07	-0.18
10467.00	89.020	155.150	6148.92	3469.70	-4094.53	-562.40	1735562.52	14555019.90	40°04'37.8486"N	80°39'35.5403"W	4132.97	187.821	0.74	0.00	-0.74
10563.00	88.710	155.800	6150.82	3565.67	-4181.85	-522.56	1735602.34	14554932.61	40°04'36.9841"N	80°39'35.0321"W	4214.37	187.123	0.75	-0.32	0.68
10660.00	88.550	155.630	6153.14	3662.63	-4270.24	-482.68	1735642.21	14554844.25	40°04'36.1091"N	80°39'34.5234"W	4297.43	186.449	0.24	-0.16	-0.18

09/15/2023



Actual Wellpath Report
 Shannon Fields OHI 10H AWP Proj: 19767' MD
 Page n of nn



REFERENCE WELLPATH IDENTIFICATION

Operator	SWN PRODUCTION COMPANY, LLC	Well	Shannon Fields OHI 10H
Field	Ohio	API	47-069-00338-0000
Facility	Shannon Fields OHI Pad	Wellbore	Shannon Fields OHI 10H AWP
Slot	10H		

WELLPATH DATA (215 stations)

MD [ft]	Inclination [°]	Azimuth [°]	TVD [ft]	Vert Sect [ft]	North [ft]	East [ft]	Grid East [US ft]	Grid North [US ft]	Latitude	Longitude	Closure Dist [ft]	Closure Dir [°]	DLS ["/100ft]	Build Rate ["/100ft]	Turn Rate ["/100ft]
10757.00	88.980	156.330	6155.23	3759.59	-4358.82	-443.20	1735681.67	14554755.71	40°04'35.2323"N	80°39'34.0199"W	4381.29	185.806	0.85	0.44	0.72
10853.00	89.230	156.510	6156.73	3855.55	-4446.79	-404.80	1735720.05	14554667.77	40°04'34.3615"N	80°39'33.5303"W	4465.18	185.201	0.32	0.26	0.19
10950.00	89.320	157.090	6157.96	3952.49	-4535.94	-366.60	1735758.25	14554578.66	40°04'33.4791"N	80°39'33.0432"W	4550.73	184.621	0.61	0.09	0.60
11046.00	89.290	156.460	6159.12	4048.43	-4624.15	-328.74	1735796.09	14554490.48	40°04'32.6059"N	80°39'32.5606"W	4635.82	184.066	0.66	-0.03	-0.66
11142.00	89.080	155.220	6160.49	4144.41	-4711.73	-289.45	1735835.36	14554402.93	40°04'31.7389"N	80°39'32.0595"W	4720.62	183.515	1.31	-0.22	-1.29
11239.00	89.200	154.110	6161.94	4241.39	-4799.39	-247.95	1735876.84	14554315.31	40°04'30.8711"N	80°39'31.5300"W	4805.79	182.957	1.15	0.12	-1.14
11336.00	88.980	154.950	6163.48	4338.38	-4886.95	-206.24	1735918.54	14554227.78	40°04'30.0042"N	80°39'30.9978"W	4891.30	182.417	0.90	-0.23	0.87
11433.00	89.140	154.890	6165.07	4435.36	-4974.80	-165.13	1735959.63	14554139.97	40°04'29.1346"N	80°39'30.4733"W	4977.54	181.901	0.18	0.16	-0.06
11529.00	89.350	154.650	6166.34	4531.36	-5061.63	-124.22	1736000.53	14554053.17	40°04'28.2749"N	80°39'29.9512"W	5063.15	181.406	0.33	0.22	-0.25
11624.00	89.200	154.560	6167.54	4626.35	-5147.44	-83.48	1736041.25	14553967.39	40°04'27.4254"N	80°39'29.4314"W	5148.12	180.929	0.18	-0.16	-0.09
11721.00	88.860	153.870	6169.18	4723.32	-5234.77	-41.29	1736083.43	14553880.10	40°04'26.5608"N	80°39'28.8931"W	5234.93	180.452	0.79	-0.35	-0.71
11817.00	89.260	154.500	6170.76	4819.30	-5321.18	0.51	1736125.21	14553793.72	40°04'25.7053"N	80°39'28.3597"W	5321.18	179.995	0.78	0.42	0.68
11914.00	89.290	155.330	6171.99	4916.29	-5409.02	41.63	1736166.31	14553705.92	40°04'24.8357"N	80°39'27.8351"W	5409.18	179.559	0.86	0.03	0.86
12010.00	89.170	155.420	6173.28	5012.28	-5496.28	81.63	1736206.29	14553618.69	40°04'23.9718"N	80°39'27.3249"W	5496.89	179.149	0.16	-0.12	0.09
12107.00	89.140	154.820	6174.71	5109.27	-5584.27	122.43	1736247.08	14553530.74	40°04'23.1008"N	80°39'26.8043"W	5585.61	178.744	0.62	-0.03	-0.62
12204.00	89.050	154.820	6176.24	5206.26	-5672.04	163.70	1736288.33	14553443.00	40°04'22.2318"N	80°39'26.2779"W	5674.40	178.347	0.09	-0.09	0.00
12300.00	89.010	154.170	6177.86	5302.24	-5758.67	205.03	1736329.65	14553356.40	40°04'21.3741"N	80°39'25.7505"W	5762.32	177.961	0.68	-0.04	-0.68
12397.00	89.450	154.430	6179.17	5399.23	-5846.07	247.09	1736371.69	14553269.04	40°04'20.5089"N	80°39'25.2138"W	5851.29	177.580	0.53	0.45	0.27
12493.00	89.110	154.640	6180.37	5495.22	-5932.74	288.36	1736412.95	14553182.41	40°04'19.6509"N	80°39'24.6872"W	5939.74	177.217	0.42	-0.35	0.22
12589.00	89.080	154.310	6181.89	5591.20	-6019.36	329.72	1736454.29	14553095.82	40°04'18.7933"N	80°39'24.1595"W	6028.38	176.865	0.35	-0.03	-0.34
12686.00	89.260	154.900	6183.29	5688.19	-6106.97	371.32	1736495.87	14553008.24	40°04'17.9259"N	80°39'23.6288"W	6118.25	176.521	0.64	0.19	0.61
12783.00	89.230	154.360	6184.57	5785.18	-6194.61	412.87	1736537.41	14552920.63	40°04'17.0582"N	80°39'23.0986"W	6208.36	176.187	0.56	-0.03	-0.56
12879.00	89.630	154.970	6185.53	5881.17	-6281.37	453.95	1736578.47	14552833.91	40°04'16.1993"N	80°39'22.5746"W	6297.76	175.866	0.76	0.42	0.64
12975.00	89.420	154.190	6186.32	5977.17	-6368.08	495.16	1736619.66	14552747.24	40°04'15.3409"N	80°39'22.0488"W	6387.30	175.554	0.84	-0.22	-0.81
13072.00	89.480	154.370	6187.25	6074.16	-6455.46	537.25	1736661.74	14552659.89	40°04'14.4757"N	80°39'21.5117"W	6477.78	175.243	0.20	0.06	0.19
13168.00	89.320	154.840	6188.26	6170.15	-6542.18	578.42	1736702.89	14552573.20	40°04'13.6172"N	80°39'20.9865"W	6567.70	174.947	0.52	-0.17	0.49
13264.00	89.260	154.580	6189.45	6266.14	-6628.97	619.43	1736743.88	14552486.44	40°04'12.7579"N	80°39'20.4634"W	6657.85	174.662	0.28	-0.06	-0.27
13361.00	89.020	154.440	6190.91	6363.13	-6716.52	661.17	1736785.61	14552398.93	40°04'11.8912"N	80°39'19.9308"W	6748.98	174.378	0.29	-0.25	-0.14
13457.00	89.170	153.880	6192.42	6459.11	-6802.91	703.00	1736827.43	14552312.57	40°04'11.0359"N	80°39'19.3970"W	6839.14	174.100	0.60	0.16	-0.58
13554.00	88.980	154.390	6193.99	6556.09	-6890.18	745.31	1736869.72	14552225.34	40°04'10.1718"N	80°39'18.8571"W	6930.38	173.826	0.56	-0.20	0.53

09/15/2023



Actual Wellpath Report
 Shannon Fields OHI 10H AWP Proj: 19767' MD
 Page n of nn



REFERENCE WELLPATH IDENTIFICATION

Operator	SWN PRODUCTION COMPANY, LLC	Well	Shannon Fields OHI 10H
Field	Ohio	API	47-069-00338-0000
Facility	Shannon Fields OHI Pad	Wellbore	Shannon Fields OHI 10H AWP
Slot	10H		

WELLPATH DATA (215 stations)

MD [ft]	Inclination [°]	Azimuth [°]	TVD [ft]	Vert Sect [ft]	North [ft]	East [ft]	Grid East [US ft]	Grid North [US ft]	Latitude	Longitude	Closure Dist [ft]	Closure Dir [°]	DLS ["/100ft]	Build Rate ["/100ft]	Turn Rate ["/100ft]
13650.00	89.540	154.670	6195.23	6652.08	-6976.84	786.59	1736910.99	14552138.71	40°04'9.3138"N	80°39'18.3305"W	7021.05	173.567	0.65	0.58	0.29
13747.00	89.380	154.600	6196.14	6749.07	-7064.49	828.14	1736952.52	14552051.10	40°04'8.4461"N	80°39'17.8004"W	7112.86	173.314	0.18	-0.16	-0.07
13843.00	89.630	154.700	6196.97	6845.07	-7151.24	869.25	1736993.61	14551964.38	40°04'7.5872"N	80°39'17.2761"W	7203.88	173.070	0.28	0.26	0.10
13939.00	89.170	154.080	6197.98	6941.06	-7237.81	910.74	1737035.08	14551877.85	40°04'6.7302"N	80°39'16.7467"W	7294.88	172.828	0.80	-0.48	-0.65
14035.00	89.260	154.560	6199.29	7037.04	-7324.31	952.34	1737076.66	14551791.37	40°04'5.8737"N	80°39'16.2160"W	7385.97	172.592	0.51	0.09	0.50
14132.00	89.350	154.280	6200.47	7134.03	-7411.80	994.21	1737118.52	14551703.92	40°04'5.0076"N	80°39'15.6817"W	7478.18	172.360	0.30	0.09	-0.29
14228.00	89.320	154.690	6201.58	7230.02	-7498.43	1035.56	1737159.86	14551617.32	40°04'4.1499"N	80°39'15.1542"W	7569.60	172.137	0.43	-0.03	0.43
14325.00	89.260	154.830	6202.78	7327.01	-7586.16	1076.92	1737201.20	14551529.63	40°04'3.2813"N	80°39'14.6266"W	7662.22	171.920	0.16	-0.06	0.14
14422.00	89.420	154.970	6203.90	7424.01	-7674.00	1118.07	1737242.33	14551441.83	40°04'2.4117"N	80°39'14.1018"W	7755.02	171.711	0.22	0.16	0.14
14518.00	89.110	154.310	6205.13	7520.00	-7760.74	1159.18	1737283.43	14551355.12	40°04'1.5530"N	80°39'13.5773"W	7846.83	171.505	0.76	-0.32	-0.69
14615.00	89.290	154.860	6206.49	7616.99	-7848.34	1200.80	1737325.03	14551267.55	40°04'0.6857"N	80°39'13.0463"W	7939.67	171.301	0.60	0.19	0.57
14711.00	89.290	154.210	6207.68	7712.98	-7935.01	1242.08	1737366.29	14551180.92	40°03'59.8276"N	80°39'12.5198"W	8031.63	171.104	0.68	0.00	-0.68
14808.00	89.230	154.970	6208.93	7809.97	-8022.62	1283.70	1737407.89	14551093.34	40°03'58.9603"N	80°39'11.9889"W	8124.67	170.909	0.79	-0.06	0.78
14904.00	89.570	155.030	6209.94	7905.96	-8109.62	1324.27	1737448.45	14551006.38	40°03'58.0990"N	80°39'11.4714"W	8217.03	170.726	0.36	0.39	0.06
15000.00	89.260	154.860	6210.92	8001.96	-8196.58	1364.92	1737489.08	14550919.45	40°03'57.2380"N	80°39'10.9529"W	8309.45	170.546	0.37	-0.32	-0.18
15097.00	88.980	155.300	6212.41	8098.94	-8284.54	1405.78	1737529.93	14550831.52	40°03'56.3672"N	80°39'10.4317"W	8402.96	170.369	0.54	-0.29	0.45
15193.00	89.350	155.130	6213.80	8194.93	-8371.69	1446.02	1737570.16	14550744.41	40°03'55.5045"N	80°39'9.9185"W	8495.65	170.200	0.42	0.39	-0.18
15289.00	88.860	154.830	6215.30	8290.92	-8458.67	1486.62	1737610.74	14550657.46	40°03'54.6434"N	80°39'9.4007"W	8588.31	170.032	0.60	-0.51	-0.31
15386.00	89.320	155.660	6216.84	8387.91	-8546.74	1527.23	1737651.33	14550569.42	40°03'53.7714"N	80°39'8.8828"W	8682.12	169.869	0.98	0.47	0.86
15482.00	89.230	155.530	6218.06	8483.89	-8634.16	1566.90	1737690.98	14550482.04	40°03'52.9060"N	80°39'8.3771"W	8775.18	169.714	0.16	-0.09	-0.14
15579.00	88.680	154.180	6219.83	8580.87	-8721.95	1608.10	1737732.17	14550394.29	40°03'52.0369"N	80°39'7.8515"W	8868.96	169.553	1.50	-0.57	-1.39
15675.00	89.750	155.540	6221.14	8676.86	-8808.84	1648.88	1737772.94	14550307.43	40°03'51.1766"N	80°39'7.3314"W	8961.84	169.398	1.80	1.11	1.42
15772.00	89.260	155.430	6221.98	8773.85	-8897.09	1689.13	1737813.17	14550219.21	40°03'50.3029"N	80°39'6.8182"W	9056.02	169.250	0.52	-0.51	-0.11
15868.00	89.200	155.690	6223.27	8869.84	-8984.48	1728.84	1737852.87	14550131.85	40°03'49.4378"N	80°39'6.3118"W	9149.31	169.108	0.28	-0.06	0.27
15965.00	89.320	155.380	6224.52	8966.82	-9072.77	1769.01	1737893.02	14550043.60	40°03'48.5638"N	80°39'5.7996"W	9243.62	168.967	0.34	0.12	-0.32
16062.00	89.290	154.770	6225.70	9063.81	-9160.73	1809.89	1737933.88	14549955.68	40°03'47.6930"N	80°39'5.2783"W	9337.80	168.824	0.63	-0.03	-0.63
16158.00	89.630	155.130	6226.61	9159.81	-9247.69	1850.53	1737974.51	14549868.75	40°03'46.8320"N	80°39'4.7599"W	9431.03	168.684	0.52	0.35	0.37
16255.00	89.540	154.950	6227.31	9256.81	-9335.63	1891.46	1738015.42	14549780.84	40°03'45.9614"N	80°39'4.2379"W	9525.32	168.547	0.21	-0.09	-0.19
16351.00	89.320	156.150	6228.26	9352.79	-9423.02	1931.20	1738055.14	14549693.49	40°03'45.0964"N	80°39'3.7313"W	9618.87	168.418	1.27	-0.23	1.25
16447.00	89.290	155.440	6229.43	9448.77	-9510.57	1970.55	1738094.48	14549605.97	40°03'44.2296"N	80°39'3.2296"W	9712.57	168.294	0.74	-0.03	-0.74

09/15/2023



Actual Wellpath Report
 Shannon Fields OHI 10H AWP Proj: 19767' MD
 Page n of nn



REFERENCE WELLPATH IDENTIFICATION			
Operator	SWN PRODUCTION COMPANY, LLC	Well	Shannon Fields OHI 10H
Field	Ohio	API	47-069-00338-0000
Facility	Shannon Fields OHI Pad	Wellbore	Shannon Fields OHI 10H AWP
Slot	10H		

WELLPATH DATA (215 stations)															
MD [ft]	Inclination [°]	Azimuth [°]	TVD [ft]	Vert Sect [ft]	North [ft]	East [ft]	Grid East [US ft]	Grid North [US ft]	Latitude	Longitude	Closure Dist [ft]	Closure Dir [°]	DLS ["/100ft]	Build Rate ["/100ft]	Turn Rate ["/100ft]
16543.00	89.850	157.050	6230.15	9544.74	-9598.43	2009.22	1738133.14	14549518.15	40°03'43.3599"N	80°39'2.7367"W	9806.47	168.177	1.78	0.58	1.68
16640.00	90.150	155.930	6230.15	9641.70	-9687.38	2047.92	1738171.81	14549429.24	40°03'42.4794"N	80°39'2.2435"W	9901.48	168.063	1.20	0.31	-1.15
16736.00	89.820	156.930	6230.17	9737.67	-9775.37	2086.30	1738210.19	14549341.28	40°03'41.6084"N	80°39'1.7543"W	9995.52	167.952	1.10	-0.34	1.04
16833.00	89.750	157.300	6230.54	9834.60	-9864.73	2124.02	1738247.89	14549251.95	40°03'40.7238"N	80°39'1.2736"W	10090.81	167.849	0.39	-0.07	0.38
16929.00	89.600	155.800	6231.08	9930.55	-9952.80	2162.22	1738286.08	14549163.92	40°03'39.8520"N	80°39'0.7868"W	10184.96	167.743	1.57	-0.16	-1.56
17026.00	89.970	155.850	6231.45	10027.54	-10041.29	2201.95	1738325.79	14549075.46	40°03'38.9760"N	80°39'0.2804"W	10279.89	167.631	0.38	0.38	0.05
17122.00	88.860	155.540	6232.43	10123.52	-10128.77	2241.46	1738365.28	14548988.01	40°03'38.1099"N	80°38'59.7767"W	10373.82	167.522	1.20	-1.16	-0.32
17218.00	89.600	155.820	6233.72	10219.50	-10216.25	2280.99	1738404.80	14548900.57	40°03'37.2440"N	80°38'59.2727"W	10467.79	167.414	0.82	0.77	0.29
17315.00	89.660	155.670	6234.34	10316.49	-10304.68	2320.84	1738444.63	14548812.17	40°03'36.3685"N	80°38'58.7647"W	10562.80	167.308	0.17	0.06	-0.15
17411.00	89.850	155.760	6234.75	10412.48	-10392.19	2360.32	1738484.10	14548724.70	40°03'35.5022"N	80°38'58.2613"W	10656.86	167.204	0.22	0.20	0.09
17507.00	89.750	155.840	6235.09	10508.47	-10479.75	2399.67	1738523.43	14548637.17	40°03'34.6354"N	80°38'57.7597"W	10750.98	167.103	0.13	-0.10	0.08
17604.00	89.320	155.780	6235.88	10605.45	-10568.23	2439.42	1738563.16	14548548.73	40°03'33.7595"N	80°38'57.2530"W	10846.12	167.002	0.45	-0.44	-0.06
17701.00	89.450	156.090	6236.92	10702.43	-10656.79	2478.97	1738602.70	14548460.20	40°03'33.8827"N	80°38'56.7488"W	10941.32	166.905	0.35	0.13	0.32
17797.00	89.290	155.720	6237.97	10798.41	-10744.42	2518.16	1738641.87	14548372.60	40°03'32.0152"N	80°38'56.2493"W	11035.57	166.810	0.42	-0.17	-0.39
17893.00	89.380	155.630	6239.09	10894.40	-10831.89	2557.70	1738681.40	14548285.17	40°03'31.1493"N	80°38'55.7452"W	11129.77	166.714	0.13	0.09	-0.09
17990.00	89.380	155.820	6240.14	10991.38	-10920.31	2597.58	1738721.26	14548196.78	40°03'30.2740"N	80°38'55.2368"W	11225.00	166.620	0.20	0.00	0.20
18086.00	89.110	155.570	6241.40	11087.36	-11007.80	2637.09	1738760.75	14548109.33	40°03'29.4079"N	80°38'54.7332"W	11319.27	166.528	0.38	-0.28	-0.26
18182.00	89.200	155.520	6242.82	11183.35	-11095.17	2676.82	1738800.47	14548021.99	40°03'28.5429"N	80°38'54.2266"W	11413.51	166.436	0.11	0.09	-0.05
18279.00	89.080	155.470	6244.27	11280.33	-11183.43	2717.05	1738840.69	14547933.77	40°03'27.6692"N	80°38'53.7137"W	11508.75	166.344	0.13	-0.12	-0.05
18375.00	89.080	155.560	6245.81	11376.31	-11270.78	2756.83	1738880.45	14547846.45	40°03'26.8043"N	80°38'53.2065"W	11603.05	166.255	0.09	0.00	0.09
18472.00	88.890	154.570	6247.53	11473.30	-11358.73	2797.72	1738921.33	14547758.54	40°03'25.9337"N	80°38'52.6852"W	11698.20	166.163	1.04	-0.20	-1.02
18568.00	89.050	154.390	6249.26	11569.28	-11445.35	2839.07	1738962.66	14547671.96	40°03'25.0761"N	80°38'52.1578"W	11792.21	166.069	0.25	0.17	-0.19
18665.00	89.290	154.480	6250.66	11666.27	-11532.84	2880.93	1739004.50	14547584.50	40°03'24.2098"N	80°38'51.6240"W	11887.23	165.974	0.26	0.25	0.09
18762.00	89.380	154.770	6251.79	11763.26	-11620.48	2922.49	1739046.05	14547496.89	40°03'23.3422"N	80°38'51.0939"W	11982.34	165.883	0.31	0.09	0.30
18858.00	89.350	154.400	6252.85	11859.25	-11707.18	2963.69	1739087.23	14547410.22	40°03'22.4837"N	80°38'50.5685"W	12076.49	165.794	0.39	-0.03	-0.39
18955.00	89.630	154.620	6253.72	11956.24	-11794.73	3005.43	1739128.96	14547322.70	40°03'21.6169"N	80°38'50.0361"W	12171.62	165.705	0.37	0.29	0.23
19052.00	89.600	154.510	6254.37	12053.24	-11882.33	3047.09	1739170.60	14547235.14	40°03'20.7496"N	80°38'49.5049"W	12266.81	165.617	0.12	-0.03	-0.11
19148.00	89.630	154.130	6255.01	12149.23	-11968.85	3088.69	1739212.18	14547148.66	40°03'19.8930"N	80°38'48.9743"W	12360.96	165.530	0.40	0.03	-0.40
19245.00	89.940	154.860	6255.38	12246.23	-12056.39	3130.46	1739253.93	14547061.15	40°03'19.0262"N	80°38'48.4417"W	12456.18	165.444	0.82	0.32	0.75
19341.00	89.780	154.520	6255.61	12342.23	-12143.18	3171.50	1739294.96	14546974.40	40°03'18.1670"N	80°38'47.9183"W	12550.50	165.363	0.39	-0.17	-0.35

09/15/2023



Actual Wellpath Report
Shannon Fields OHI 10H AWP Proj: 19767' MD
Page n of nn



REFERENCE WELLPATH IDENTIFICATION			
Operator	SWN PRODUCTION COMPANY, LLC	Well	Shannon Fields OHI 10H
Field	Ohio	API	47-069-00338-0000
Facility	Shannon Fields OHI Pad	Wellbore	Shannon Fields OHI 10H AWP
Slot	10H		

WELLPATH DATA (215 stations) † = interpolated, ‡ = extrapolated station															
MD [ft]	Inclination [°]	Azimuth [°]	TVD [ft]	Vert Sect [ft]	North [ft]	East [ft]	Grid East [US ft]	Grid North [US ft]	Latitude	Longitude	Closure Dist [ft]	Closure Dir [°]	DLS ["/100ft]	Build Rate ["/100ft]	Turn Rate ["/100ft]
19438.00	89.450	154.320	6256.26	12439.22	-12230.67	3213.38	1739336.82	14546886.94	40°03'17.3008"N	80°38'47.3842"W	12645.75	165.279	0.40	-0.34	-0.21
19535.00	89.690	154.400	6256.99	12536.21	-12318.11	3255.35	1739378.78	14546799.53	40°03'16.4350"N	80°38'46.8489"W	12741.01	165.197	0.26	0.25	0.08
19631.00	89.880	154.470	6257.35	12632.21	-12404.71	3296.78	1739420.19	14546712.96	40°03'15.5775"N	80°38'46.3206"W	12835.33	165.117	0.21	0.20	0.07
19728.00	89.600	154.620	6257.79	12729.21	-12492.30	3338.47	1739461.86	14546625.42	40°03'14.7104"N	80°38'45.7889"W	12930.69	165.038	0.33	-0.29	0.15
19767.00‡	89.600	154.620	6258.06	12768.21	-12527.53	3355.19	1739478.57	14546590.19	40°03'14.3615"N	80°38'45.5758"W	12969.05	165.007	0.00	0.00	0.00

HOLE & CASING SECTIONS - Ref Wellbore: Shannon Fields OHI 10H AWP Ref Wellpath: Shannon Fields OHI 10H AWP Proj: 19767' MD										
String/Diameter	Start MD [ft]	End MD [ft]	Interval [ft]	Start TVD [ft]	End TVD [ft]	Start N/S [ft]	Start E/W [ft]	End N/S [ft]	End E/W [ft]	
20in Conductor	26.00	133.00	107.00	26.00	133.00	0.00	0.00	-0.45	0.17	
17.5in Open Hole	133.00	554.00	421.00	133.00	553.98	-0.45	0.17	-1.23	0.45	
13.375in Casing Surface	26.00	554.00	528.00	26.00	553.98	0.00	0.00	-1.23	0.45	
12.25in Open Hole	554.00	1934.00	1380.00	553.98	1915.72	-1.23	0.45	8.80	-164.19	
9.625in Casing Intermediate	26.00	1917.00	1891.00	26.00	1899.35	0.00	0.00	9.20	-159.63	
8.75in Open Hole	1934.00	5690.00	3756.00	1915.72	5277.42	8.80	-164.19	-225.19	-1813.90	
8.5in Open Hole	5690.00	19767.00	14077.00	5277.42	6258.06	-225.19	-1813.90	-12527.53	3355.19	
5.5in Casing Production	26.00	19767.00	19741.00	26.00	6258.06	0.00	0.00	-12527.53	3355.19	

09/15/2023



Actual Wellpath Report
 Shannon Fields OHI 10H AWP Proj: 19767' MD
 Page n of nn



REFERENCE WELLPATH IDENTIFICATION

Operator	SWN PRODUCTION COMPANY, LLC	Well	Shannon Fields OHI 10H
Field	Ohio	API	47-069-00338-0000
Facility	Shannon Fields OHI Pad	Wellbore	Shannon Fields OHI 10H AWP
Slot	10H		

TARGETS

Name	TVD [ft]	North [ft]	East [ft]	Grid East [US ft]	Grid North [US ft]	Latitude	Longitude	Shape
Shannon Fields OHI 10H LP Rev-1	6057.00	-963.75	-2050.23	1734075.27	14558149.45	40°05'8.8431"N	80°39'54.5282"W	point
Shannon Fields OHI 10H WP1	6059.92	-1532.58	-1782.43	1734342.97	14557580.84	40°05'3.2118"N	80°39'51.1104"W	point
Shannon Fields OHI 10H WP2	6059.92	-2027.66	-1475.31	1734649.97	14557085.95	40°04'58.3079"N	80°39'47.1833"W	point
Shannon Fields OHI 10H WP3	6059.92	-2621.96	-1272.85	1734852.35	14556491.89	40°04'52.4274"N	80°39'44.6077"W	point
Shannon Fields OHI 10H LP Rev-2	6094.00	-963.74	-2050.23	1734075.27	14558149.45	40°05'8.8431"N	80°39'54.5282"W	point
Shannon Fields OHI 10H BHL Rev 2	6242.00	-12527.75	3365.44	1739488.82	14546589.97	40°03'14.3590"N	80°38'45.4439"W	point
Shannon Fields OHI 10H BHL Rev 3	6279.00	-12527.75	3365.44	1739488.82	14546589.97	40°03'14.3590"N	80°38'45.4439"W	point

09/15/2023



Actual Wellpath Report
 Shannon Fields OHI 10H AWP Proj: 19767' MD
 Page n of nn



REFERENCE WELLPATH IDENTIFICATION			
Operator	SWN PRODUCTION COMPANY, LLC	Well	Shannon Fields OHI 10H
Field	Ohio	API	47-069-00338-0000
Facility	Shannon Fields OHI Pad	Wellbore	Shannon Fields OHI 10H AWP
Slot	10H		

WELLPATH COMPOSITION - Ref Wellbore: Shannon Fields OHI 10H AWP Ref Wellpath: Shannon Fields OHI 10H AWP Proj: 19767' MD					
Start MD (ft)	End MD (ft)	Positional Uncertainty Model	Log Name/Comment	Wellbore	Survey Date
26.00	484.00	BH Generic gyro - continuous (Standard)	01 Tally Gyro <17-1/2"> (50'- 484')	Shannon Fields OHI 10H AWP	10/24/2022
484.00	1850.00	OWSG MWD rev2 + HRGM	02 Tally MWD <12-1/4"> (520' - 1850')	Shannon Fields OHI 10H AWP	10/28/2022
1850.00	5620.00	OWSG MWD rev2 + HRGM	03 Tally MWD <8-3/4"> (1982'-5620')	Shannon Fields OHI 10H AWP	11/2/2022
5620.00	19767.00	BH AutoTrak Curve/eXpress (2019) (HRGM, Short spacing)	04 BH AutoTrak Curve (HRGM, Short spacing) <8-1/2"> (5620') (5721'-19728') Projection:19767'	Shannon Fields OHI 10H AWP	10/31/2022

09/15/2023



Actual Wellpath Report
 Shannon Fields OHI 10H AWP Proj: 19767' MD
 Page n of nn



REFERENCE WELLPATH IDENTIFICATION			
Operator	SWN PRODUCTION COMPANY, LLC	Well	Shannon Fields OHI 10H
Field	Ohio	API	47-069-00338-0000
Facility	Shannon Fields OHI Pad	Wellbore	Shannon Fields OHI 10H AWP
Slot	10H		

COMMENTS
Wellpath general comments API:47-069-00338-0000 BH Job#:111469797 Rig: SDC 40 Duration:10/30/2022-11/01/2022 01_Tally Gyro<17-1/2">(50'-484') 02_Tally MWD<12-1/4">(520'-1850') 03_Tally MWD<8-3/4">(1982'-5620') 04_BH AT Curve<8-1/2">(5721'-19728')

09/15/2023