



SWN PRODUCTION COMPANY, LLC



Location: Ohio County, WV
 Field: Ohio
 Facility: Roy Riggle OHI Pad

Slot: 401H
 Well: Roy Riggle OHI 401H
 Wellbore: Roy Riggle OHI 401H AWB

Plot reference wellpath is Roy Riggle OHI 401H awp Proj: 25146'	Grid System: NAD83 / UTM Zone 17 North, US feet
True vertical depths are referenced to SDC 40 (KB)	North Reference: Grid north
Reference wellpath measured depths are referenced to SDC 40 (KB)	Scale: True distance
SDC 40 (KB) to Mean Sea Level: 1278 feet	Coordinates are in feet referenced to Slot
Mean Sea Level to Ground level (At Slot: 401H): -1252 feet	Depths are in feet
Offset wellpath MDs are referenced to each path's default MD datum	Created by: tranlam on 2023-12-23; Database: WA_MPL_EASTERNUS_Defn

Location Information

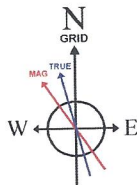
Facility Name			Grid East (US ft)	Grid North (US ft)	Latitude	Longitude
Roy Riggle OHI Pad			1773447.520	14582274.947	40°09'5.5690"N	80°31'26.1230"W
Slot	Local N (ft)	Local E (ft)	Grid East (US ft)	Grid North (US ft)	Latitude	Longitude
401H	-4.24	-24.74	1773422.790	14582270.710	40°09'5.5284"N	80°31'26.4419"W
SDC 40 (KB) to Ground level (At Slot: 401H)					26ft	
Mean Sea Level to Ground level (At Slot: 401H)					-1252ft	
SDC 40 (KB) to Mean Sea Level					1278ft	

Bottom Hole Location

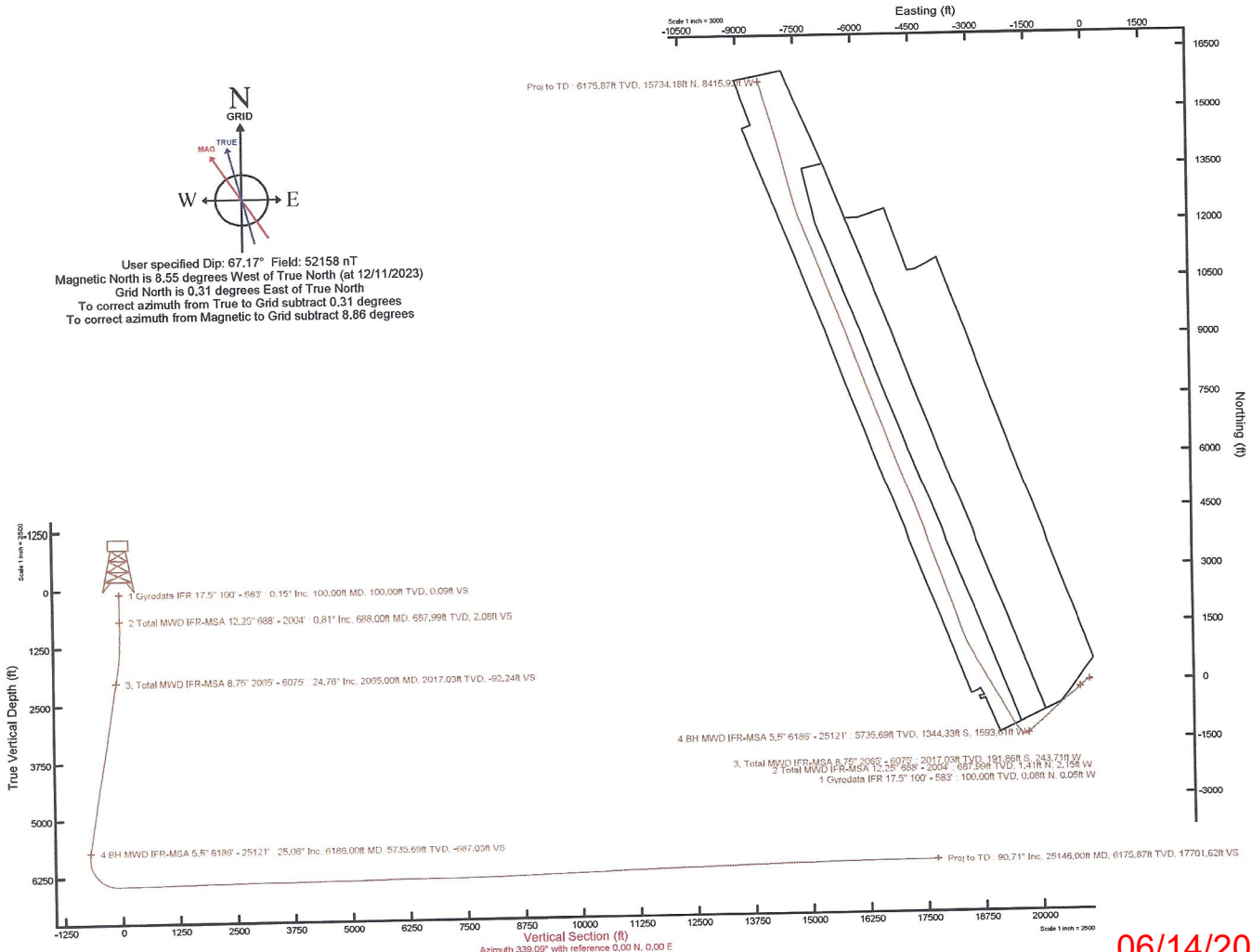
MD (ft)	Inc (°)	Az (°)	TVD (ft)	Local N (ft)	Local E (ft)	Grid East (US ft)	Grid North (US ft)	Latitude	Longitude
25146.00	90.710	343.460	6175.87	15734.18	-8415.92	1765010.08	14597998.89	40°11'41.4439"N	80°33'13.8043"W

API: 47069003630000
 BH JOB: 112037086
 DURATION: 12/15/2023 - 12/21/2023
 RIG: SDC 40

RECEIVED
 Office Of Oil and Gas
 APR 30 2024
 WV Department of
 Environmental Protection



User specified Dip: 67.17° Field: 52158 nT
 Magnetic North is 8.55 degrees West of True North (at 12/11/2023)
 Grid North is 0.31 degrees East of True North
 To correct azimuth from True to Grid subtract 0.31 degrees
 To correct azimuth from Magnetic to Grid subtract 8.86 degrees



06/14/2024



Actual Wellpath Report

Roy Riggle OHI 401H awp Proj: 25146'
Page 1 of 12



REFERENCE WELLPATH IDENTIFICATION

Operator	SWN PRODUCTION COMPANY, LLC	Well	Roy Riggle OHI 401H
Field	Ohio	API	47069003630000
Facility	Roy Riggle OHI Pad	Wellbore	Roy Riggle OHI 401H AWB
Slot	401H		

REPORT SETUP INFORMATION

Projection System	NAD83 / UTM Zone 17 North, US feet	Software System	WellArchitect® 6.0
North Reference	Grid	User	Tranlam
Scale	0.999620	Report Generated	12/23/2023 at 11:47:41 PM
Convergence at slot	0.31° East	Database	WA_MPL_EASTERNUS_Defn

WELLPATH LOCATION

	Local coordinates		Grid coordinates		Geographic coordinates	
	North[ft]	East[ft]	Easting[US ft]	Northing[US ft]	Latitude	Longitude
Slot Location	-4.24	-24.74	1773422.79	14582270.71	40°09'5.5284"N	80°31'26.4419"W
Facility Reference Pt			1773447.52	14582274.95	40°09'5.5690"N	80°31'26.1230"W
Field Reference Pt			0.00	0.00	0°00'0.0000"	85°29'19.4780"W

WELLPATH DATUM

Calculation method	Minimum curvature	SDC 40 (KB) to Facility Vertical Datum	1278.00ft
Horizontal Reference Pt	Slot	SDC 40 (KB) to Mean Sea Level	1278.00ft
Vertical Reference Pt	SDC 40 (KB)	SDC 40 (KB) to Ground Level at Slot (401H)	26.00ft
MD Reference Pt	SDC 40 (KB)	Section Origin	N 0.00, E 0.00 ft
Field Vertical Reference	Mean Sea Level	Section Azimuth	339.09°

RECEIVED
Office Of Oil and Gas
APR 30 2024
WV Department of Environmental Protection

06/14/2024

APR 30 2024

WV Department of
Environmental Protection



Actual Wellpath Report

Roy Riggle OHI 401H awp Proj: 25146'
Page 2 of 12



REFERENCE WELLPATH IDENTIFICATION

Operator	SWN PRODUCTION COMPANY, LLC	Well	Roy Riggle OHI 401H
Field	Ohio	API	47069003630000
Facility	Roy Riggle OHI Pad	Wellbore	Roy Riggle OHI 401H AWB
Slot	401H		

WELLPATH DATA (272 stations) † = interpolated, ‡ = extrapolated station

MD [ft]	Inclination [°]	Azimuth [°]	TVD [ft]	Vert Sect [ft]	North [ft]	East [ft]	Grid East [US ft]	Grid North [US ft]	Latitude	Longitude	Closure Dist [ft]	Closure Dir [°]	DLS [°/100ft]	Comments
0.00†	0.000	326.960	0.00	0.00	0.00	0.00	1773422.79	14582270.71	40°09'5.5284"N	80°31'26.4419"W	0.00	0.000	0.00	
26.00	0.000	326.960	26.00	0.00	0.00	0.00	1773422.79	14582270.71	40°09'5.5284"N	80°31'26.4419"W	0.00	0.000	0.00	
100.00	0.150	326.960	100.00	0.09	0.08	-0.05	1773422.74	14582270.79	40°09'5.5292"N	80°31'26.4426"W	0.10	326.960	0.20	
150.00	0.300	305.840	150.00	0.27	0.21	-0.19	1773422.60	14582270.92	40°09'5.5305"N	80°31'26.4444"W	0.29	317.544	0.34	
200.00	0.260	311.810	200.00	0.48	0.36	-0.39	1773422.40	14582271.07	40°09'5.5321"N	80°31'26.4468"W	0.53	313.450	0.10	
250.00	0.310	310.740	250.00	0.70	0.53	-0.57	1773422.22	14582271.24	40°09'5.5337"N	80°31'26.4492"W	0.78	312.741	0.10	
300.00	0.290	310.150	300.00	0.93	0.70	-0.77	1773422.02	14582271.41	40°09'5.5354"N	80°31'26.4534"W	1.04	312.166	0.04	
350.00	0.110	318.730	350.00	1.08	0.82	-0.90	1773421.89	14582271.53	40°09'5.5365"N	80°31'26.4548"W	1.22	312.215	0.36	
400.00	0.020	4.160	400.00	1.14	0.86	-0.93	1773421.86	14582271.57	40°09'5.5370"N	80°31'26.4538"W	1.27	312.772	0.19	
450.00	0.100	243.980	450.00	1.14	0.85	-0.97	1773421.82	14582271.56	40°09'5.5369"N	80°31'26.4543"W	1.29	311.267	0.22	
500.00	0.180	316.630	500.00	1.21	0.89	-1.06	1773421.73	14582271.60	40°09'5.5373"N	80°31'26.4555"W	1.39	309.906	0.36	
550.00	0.210	349.570	550.00	1.37	1.04	-1.13	1773421.66	14582271.75	40°09'5.5387"N	80°31'26.4564"W	1.54	312.433	0.23	
583.00	0.310	314.350	583.00	1.51	1.16	-1.21	1773421.58	14582271.87	40°09'5.5399"N	80°31'26.4574"W	1.67	313.785	0.56	
688.00	0.810	273.970	687.99	2.08	1.41	-2.15	1773420.64	14582272.12	40°09'5.5425"N	80°31'26.4695"W	2.57	303.197	0.58	
779.00	1.680	255.690	778.97	2.51	1.12	-4.09	1773418.71	14582271.83	40°09'5.5397"N	80°31'26.4944"W	4.24	285.363	1.04	
871.00	2.930	247.650	870.89	2.60	-0.10	-7.57	1773415.23	14582270.61	40°09'5.5278"N	80°31'26.5393"W	7.57	269.206	1.40	
961.00	4.730	238.100	960.69	1.84	-2.94	-12.85	1773409.95	14582267.77	40°09'5.5000"N	80°31'26.6075"W	13.18	257.105	2.12	
1051.00	6.990	241.250	1050.21	0.38	-7.54	-20.80	1773402.00	14582263.18	40°09'5.4551"N	80°31'26.7102"W	22.12	250.082	2.54	
1142.00	8.950	238.720	1140.33	-1.65	-13.88	-31.70	1773391.10	14582256.84	40°09'5.3930"N	80°31'26.8511"W	34.61	246.363	2.19	
1233.00	10.600	236.010	1230.01	-4.82	-22.23	-44.69	1773378.11	14582248.49	40°09'5.3111"N	80°31'27.0190"W	49.92	243.554	1.88	
1323.00	12.410	232.880	1318.20	-9.39	-32.70	-59.27	1773363.54	14582238.03	40°09'5.2085"N	80°31'27.2074"W	67.69	241.117	2.13	
1414.00	13.810	231.210	1406.82	-15.45	-45.40	-75.53	1773347.29	14582225.33	40°09'5.0838"N	80°31'27.4177"W	88.13	238.991	1.59	
1505.00	15.380	228.870	1494.88	-22.96	-60.14	-93.09	1773329.74	14582210.59	40°09'4.9390"N	80°31'27.6448"W	110.83	237.134	1.84	
1595.00	17.030	226.220	1581.31	-32.21	-77.11	-111.60	1773311.24	14582193.63	40°09'4.7723"N	80°31'27.8843"W	135.65	235.355	2.01	
1686.00	19.130	227.070	1667.81	-42.98	-96.49	-132.14	1773290.70	14582174.25	40°09'4.5819"N	80°31'28.1502"W	163.62	233.861	2.33	
1776.00	21.370	229.150	1752.24	-54.10	-117.26	-155.34	1773267.51	14582153.49	40°09'4.3778"N	80°31'28.4504"W	194.63	232.951	2.61	
1867.00	22.840	229.900	1836.55	-65.56	-139.49	-181.39	1773241.47	14582131.28	40°09'4.1596"N	80°31'28.7875"W	228.82	232.441	1.64	
1958.00	24.550	230.400	1919.88	-77.43	-162.91	-209.47	1773213.40	14582107.86	40°09'3.9296"N	80°31'29.1507"W	265.37	232.126	1.89	
2004.00	24.880	230.290	1961.66	-83.61	-175.19	-224.28	1773198.60	14582095.59	40°09'3.8091"N	80°31'29.3422"W	284.59	232.006	0.72	
2065.00	24.760	228.470	2017.03	-92.24	-191.86	-243.71	1773179.17	14582078.93	40°09'3.6454"N	80°31'29.5936"W	310.17	231.789	1.27	

RECEIVED
Office Of Oil and Gas

APR 30 2024

WV Department of
Environmental Protection



Southwestern Energy®

Actual Wellpath Report

Roy Riggle OHI 401H awp Proj: 25146'

Page 3 of 12



REFERENCE WELLPATH IDENTIFICATION

Operator	SWN PRODUCTION COMPANY, LLC	Well	Roy Riggle OHI 401H
Field	Ohio	API	47069003630000
Facility	Roy Riggle OHI Pad	Wellbore	Roy Riggle OHI 401H AWB
Slot	401H		

WELLPATH DATA (272 stations)

MD [ft]	Inclination [°]	Azimuth [°]	TVD [ft]	Vert Sect [ft]	North [ft]	East [ft]	Grid East [US ft]	Grid North [US ft]	Latitude	Longitude	Closure Dist [ft]	Closure Dir [°]	DLS [°/100ft]	Comments
2155.00	25.780	227.810	2098.41	-105.98	-217.50	-272.32	1773150.57	14582053.30	40°09'3.3935"N	80°31'29.9638"W	348.52	231.387	1.18	
2247.00	26.120	228.860	2181.14	-120.24	-244.26	-302.40	1773120.51	14582026.55	40°09'3.1307"N	80°31'30.3530"W	388.72	231.071	0.62	
2337.00	25.690	229.430	2262.10	-133.66	-269.98	-332.14	1773090.78	14582000.84	40°09'2.8781"N	80°31'30.7377"W	428.02	230.894	0.55	
2428.00	25.420	229.550	2344.19	-146.83	-295.48	-361.98	1773060.95	14581975.35	40°09'2.6277"N	80°31'31.1238"W	467.27	230.776	0.30	
2519.00	24.960	229.720	2426.54	-159.73	-320.56	-391.49	1773031.45	14581950.27	40°09'2.3813"N	80°31'31.5056"W	505.99	230.689	0.51	
2609.00	24.350	230.340	2508.33	-171.99	-344.68	-420.26	1773002.69	14581926.16	40°09'2.1445"N	80°31'31.8777"W	543.53	230.643	0.74	
2703.00	24.950	230.240	2593.77	-184.62	-369.73	-450.42	1772972.54	14581901.12	40°09'1.8986"N	80°31'32.2678"W	582.74	230.619	0.64	
2793.00	26.060	229.000	2675.00	-197.55	-394.84	-479.94	1772943.04	14581876.02	40°09'1.6520"N	80°31'32.6496"W	621.48	230.556	1.37	
2884.00	26.210	230.050	2756.69	-210.97	-420.86	-510.43	1772912.56	14581850.01	40°09'1.3965"N	80°31'33.0441"W	661.56	230.494	0.53	
2974.00	25.130	229.610	2837.81	-223.83	-446.00	-540.22	1772882.78	14581824.88	40°09'1.1496"N	80°31'33.4295"W	700.54	230.457	1.22	
3065.00	25.150	228.430	2920.19	-237.09	-471.36	-569.40	1772853.60	14581799.53	40°09'0.9006"N	80°31'33.8070"W	739.19	230.382	0.55	
3155.00	25.870	229.360	3001.42	-250.47	-496.83	-598.61	1772824.41	14581774.06	40°09'0.6504"N	80°31'34.1849"W	777.93	230.308	0.92	
3246.00	25.380	230.060	3083.46	-263.53	-522.29	-628.63	1772794.40	14581748.62	40°09'0.4004"N	80°31'34.5732"W	817.29	230.279	0.63	
3337.00	25.410	228.490	3165.67	-276.76	-547.75	-658.20	1772764.84	14581723.17	40°09'0.1504"N	80°31'34.9558"W	856.30	230.233	0.74	
3428.00	25.470	229.100	3247.85	-290.32	-573.50	-687.61	1772735.44	14581697.43	40°08'59.8975"N	80°31'35.3363"W	895.38	230.171	0.30	
3518.00	25.070	231.620	3329.24	-302.66	-598.01	-717.19	1772705.88	14581672.93	40°08'59.6568"N	80°31'35.7188"W	933.79	230.178	1.28	
3609.00	25.370	231.810	3411.56	-314.24	-622.03	-747.62	1772675.45	14581648.92	40°08'59.4210"N	80°31'36.1124"W	972.55	230.239	0.34	
3698.00	25.670	229.320	3491.88	-326.42	-646.38	-777.23	1772645.86	14581624.57	40°08'59.1819"N	80°31'36.4953"W	1010.89	230.251	1.25	
3788.00	25.630	229.500	3573.01	-339.54	-671.73	-806.81	1772616.28	14581599.23	40°08'58.9330"N	80°31'36.8781"W	1049.84	230.220	0.10	
3880.00	25.190	229.370	3656.11	-352.82	-697.40	-836.80	1772586.31	14581573.57	40°08'58.6809"N	80°31'37.2660"W	1089.32	230.192	0.48	
3971.00	25.200	229.060	3738.46	-365.99	-722.71	-866.13	1772556.99	14581548.28	40°08'58.4324"N	80°31'37.6455"W	1128.05	230.158	0.15	
4061.00	25.510	229.730	3819.79	-378.97	-747.79	-895.40	1772527.74	14581523.21	40°08'58.1861"N	80°31'38.0240"W	1166.59	230.133	0.47	
4156.00	25.500	229.140	3905.53	-392.73	-774.39	-926.47	1772496.67	14581496.61	40°08'57.9248"N	80°31'38.4260"W	1207.49	230.109	0.27	
4246.00	25.210	226.900	3986.86	-406.58	-800.16	-955.12	1772468.04	14581470.85	40°08'57.6717"N	80°31'38.7967"W	1246.00	230.045	1.11	
4337.00	24.990	225.970	4069.27	-421.45	-826.76	-983.09	1772440.08	14581444.26	40°08'57.4102"N	80°31'39.1587"W	1284.52	229.937	0.50	
4429.00	24.480	225.850	4152.83	-436.60	-853.55	-1010.74	1772412.44	14581417.49	40°08'57.1470"N	80°31'39.5166"W	1322.93	229.820	0.56	
4519.00	24.360	227.340	4234.78	-450.84	-879.11	-1037.77	1772385.42	14581391.93	40°08'56.8958"N	80°31'39.8664"W	1360.07	229.731	0.70	
4609.00	25.570	228.830	4316.37	-464.44	-904.48	-1066.04	1772357.16	14581366.58	40°08'56.6466"N	80°31'40.2322"W	1398.04	229.687	1.52	
4701.00	26.320	229.210	4399.09	-478.25	-930.87	-1096.43	1772326.78	14581340.19	40°08'56.3874"N	80°31'40.6253"W	1438.29	229.668	0.84	
4792.00	25.950	229.830	4480.79	-491.68	-956.90	-1126.91	1772296.31	14581314.18	40°08'56.1318"N	80°31'41.0197"W	1478.37	229.664	0.51	

06/14/2024

Actual Wellpath Report
Roy Riggle OHI 401H awp Proj: 25146'
Page 4 of 12



REFERENCE WELLPATH IDENTIFICATION

Operator	SWN PRODUCTION COMPANY, LLC	Well	Roy Riggle OHI 401H
Field	Ohio	API	47069003630000
Facility	Roy Riggle OHI Pad	Wellbore	Roy Riggle OHI 401H AWB
Slot	401H		

WELLPATH DATA (272 stations)

MD [ft]	Inclination [°]	Azimuth [°]	TVD [ft]	Vert Sect [ft]	North [ft]	East [ft]	Grid East [US ft]	Grid North [US ft]	Latitude	Longitude	Closure Dist [ft]	Closure Dir [°]	DLS [°/100ft]	Comments
4883.00	25.510	229.000	4562.77	-504.98	-982.60	-1156.92	1772266.31	14581288.49	40°08'55.8795"N	80°31'41.4078"W	1517.88	229.658	0.92	
4975.00	25.180	229.010	4645.91	-518.50	-1008.43	-1186.64	1772236.60	14581262.66	40°08'55.6257"N	80°31'41.7924"W	1557.26	229.641	0.36	
5066.00	26.050	230.280	4727.97	-531.59	-1033.90	-1216.62	1772206.63	14581237.21	40°08'55.3756"N	80°31'42.1802"W	1596.60	229.642	1.13	
5158.00	26.240	231.860	4810.56	-544.13	-1059.37	-1248.16	1772175.11	14581211.75	40°08'55.1256"N	80°31'42.5880"W	1637.12	229.677	0.78	
5252.00	27.240	232.210	4894.50	-556.63	-1085.38	-1281.50	1772141.78	14581185.74	40°08'54.8702"N	80°31'43.0192"W	1679.38	229.737	1.08	
5345.00	27.590	232.040	4977.06	-569.03	-1111.67	-1315.30	1772107.99	14581159.46	40°08'54.6122"N	80°31'43.4563"W	1722.16	229.796	0.39	
5436.00	26.820	230.100	5057.99	-581.89	-1137.81	-1347.67	1772075.64	14581133.34	40°08'54.3557"N	80°31'43.8748"W	1763.75	229.826	1.29	
5528.00	26.020	230.080	5140.38	-595.21	-1164.07	-1379.07	1772044.25	14581107.09	40°08'54.0978"N	80°31'44.2810"W	1804.68	229.832	0.87	
5619.00	25.980	230.070	5222.17	-608.21	-1189.67	-1409.66	1772013.67	14581081.49	40°08'53.8464"N	80°31'44.6767"W	1844.58	229.838	0.04	
5710.00	26.200	229.530	5303.90	-621.43	-1215.50	-1440.23	1771983.11	14581055.67	40°08'53.5927"N	80°31'45.0720"W	1884.60	229.837	0.36	
5801.00	24.990	229.140	5385.97	-634.72	-1241.12	-1470.05	1771953.30	14581030.07	40°08'53.3412"N	80°31'45.4578"W	1923.91	229.827	1.34	
5892.00	24.370	229.980	5468.66	-647.42	-1265.77	-1498.96	1771924.40	14581005.43	40°08'53.0991"N	80°31'45.8318"W	1961.90	229.821	0.78	
5983.00	24.730	230.350	5551.43	-659.68	-1289.98	-1528.00	1771895.37	14580981.22	40°08'52.8613"N	80°31'46.2074"W	1999.71	229.828	0.43	
6075.00	24.720	230.010	5635.00	-672.16	-1314.63	-1557.55	1771865.83	14580956.59	40°08'52.6193"N	80°31'46.5896"W	2038.19	229.835	0.15	
6186.00	25.060	231.020	5735.69	-687.03	-1344.33	-1593.61	1771829.79	14580926.89	40°08'52.3277"N	80°31'47.0560"W	2084.90	229.850	0.49	
6283.00	23.850	236.530	5823.99	-697.67	-1368.07	-1625.94	1771797.47	14580903.16	40°08'52.0948"N	80°31'47.4740"W	2124.93	229.923	2.66	
6379.00	23.990	260.080	5911.95	-698.17	-1382.17	-1661.44	1771761.99	14580889.07	40°08'51.9573"N	80°31'47.9320"W	2161.20	230.243	9.89	
6476.00	26.050	283.550	6000.06	-682.32	-1380.57	-1701.67	1771721.77	14580890.66	40°08'51.9752"N	80°31'48.4500"W	2191.27	230.947	10.39	
6572.00	28.470	300.350	6085.52	-652.50	-1364.05	-1741.98	1771681.48	14580907.19	40°08'52.1406"N	80°31'48.9679"W	2212.49	231.937	8.37	
6669.00	33.940	313.630	6168.55	-609.93	-1333.62	-1781.61	1771641.86	14580937.60	40°08'52.4434"N	80°31'49.4761"W	2225.46	233.183	9.03	
6765.00	41.810	317.320	6244.28	-555.93	-1291.53	-1822.77	1771600.72	14580979.67	40°08'52.8614"N	80°31'50.0033"W	2233.95	234.680	8.53	
6862.00	49.600	321.290	6311.98	-490.62	-1238.85	-1867.86	1771555.64	14581032.33	40°08'53.3844"N	80°31'50.5804"W	2241.35	236.446	8.55	
6958.00	59.710	324.550	6367.46	-415.49	-1176.39	-1914.89	1771508.63	14581094.77	40°08'54.0041"N	80°31'51.1818"W	2247.38	238.436	10.89	
7055.00	67.450	326.280	6410.59	-331.14	-1104.90	-1964.12	1771459.42	14581166.22	40°08'54.7131"N	80°31'51.8109"W	2253.57	240.640	8.14	
7151.00	75.160	327.260	6441.34	-242.36	-1028.89	-2013.90	1771409.65	14581242.22	40°08'55.4668"N	80°31'52.4468"W	2261.51	242.938	8.09	
7248.00	83.590	329.820	6459.21	-148.72	-947.63	-2063.59	1771359.99	14581323.44	40°08'56.2724"N	80°31'53.0810"W	2270.77	245.335	9.07	
7345.00	91.140	330.020	6463.66	-53.13	-863.84	-2112.12	1771311.48	14581407.20	40°08'57.1029"N	80°31'53.7003"W	2281.94	247.756	7.79	
7441.00	91.110	330.030	6461.78	41.65	-780.70	-2160.07	1771263.54	14581490.31	40°08'57.9270"N	80°31'54.3122"W	2296.82	250.129	0.03	
7538.00	91.110	330.450	6459.90	137.48	-696.51	-2208.21	1771215.42	14581574.47	40°08'58.7615"N	80°31'54.9264"W	2315.45	252.494	0.43	
7634.00	91.080	329.720	6458.07	232.27	-613.31	-2256.08	1771167.57	14581657.63	40°08'59.5861"N	80°31'55.5372"W	2337.96	254.792	0.76	

APR 30 2024

WV Department of
Environmental Protection



Southwestern Energy®

Actual Wellpath Report

Roy Riggle OHI 401H awp Proj: 25146'

Page 5 of 12



REFERENCE WELLPATH IDENTIFICATION

Operator	SWN PRODUCTION COMPANY, LLC	Well	Roy Riggle OHI 401H
Field	Ohio	API	47069003630000
Facility	Roy Riggle OHI Pad	Wellbore	Roy Riggle OHI 401H AWB
Slot	401H		

WELLPATH DATA (272 stations)

MD [ft]	Inclination [°]	Azimuth [°]	TVD [ft]	Vert Sect [ft]	North [ft]	East [ft]	Grid East [US ft]	Grid North [US ft]	Latitude	Longitude	Closure Dist [ft]	Closure Dir [°]	DLS ["/100ft]	Comments
7731.00	90.980	330.090	6456.32	328.01	-529.40	-2304.71	1771118.96	14581741.51	40°09'0.4178"N	80°31'56.1577"W	2364.73	257.063	0.40	
7827.00	91.140	330.150	6454.55	422.82	-446.18	-2352.53	1771071.16	14581824.70	40°09'1.2427"N	80°31'56.7679"W	2394.46	259.261	0.18	
7924.00	90.920	330.150	6452.80	518.63	-362.06	-2400.80	1771022.91	14581908.79	40°09'2.0765"N	80°31'57.3838"W	2427.95	261.424	0.23	
8020.00	90.980	329.660	6451.21	613.39	-279.01	-2448.93	1770974.80	14581991.80	40°09'2.8997"N	80°31'57.9980"W	2464.77	263.500	0.51	
8117.00	90.920	329.790	6449.60	709.08	-196.26	-2497.82	1770925.92	14582075.53	40°09'3.7299"N	80°31'58.6220"W	2505.44	265.530	0.15	
8214.00	90.980	329.710	6447.99	804.78	-111.47	-2546.68	1770877.08	14582159.28	40°09'4.5604"N	80°31'59.2456"W	2549.12	267.494	0.10	
8310.00	90.920	329.990	6446.40	899.52	-28.47	-2594.89	1770828.89	14582242.25	40°09'5.3831"N	80°31'59.8608"W	2595.05	269.371	0.30	
8407.00	90.980	329.970	6444.79	995.29	55.50	-2643.42	1770780.38	14582326.19	40°09'6.2154"N	80°32'0.4800"W	2644.00	271.203	0.07	
8503.00	91.020	330.270	6443.12	1090.10	138.73	-2691.24	1770732.58	14582409.39	40°09'7.0404"N	80°32'1.0902"W	2694.81	272.951	0.32	
8600.00	91.140	330.050	6441.29	1185.90	222.85	-2739.49	1770684.34	14582493.48	40°09'7.8742"N	80°32'1.7059"W	2748.54	274.651	0.26	
8696.00	90.860	329.920	6439.61	1280.68	305.97	-2787.51	1770636.35	14582576.56	40°09'8.6980"N	80°32'2.3187"W	2804.25	276.264	0.32	
8793.00	90.830	329.930	6438.18	1376.43	389.90	-2836.11	1770587.76	14582660.46	40°09'9.5299"N	80°32'2.9389"W	2862.79	277.828	0.03	
8890.00	90.890	330.060	6436.73	1472.20	473.89	-2884.61	1770539.28	14582744.42	40°09'10.3624"N	80°32'3.5579"W	2923.28	279.329	0.15	
8986.00	91.050	330.300	6435.10	1567.03	557.17	-2932.35	1770491.56	14582827.66	40°09'11.1878"N	80°32'4.1670"W	2984.81	280.758	0.30	
9084.00	91.350	331.720	6433.05	1664.03	642.86	-2979.83	1770444.10	14582913.33	40°09'12.0372"N	80°32'4.7727"W	3048.39	282.174	1.48	
9180.00	90.920	329.910	6431.15	1759.01	726.66	-3026.63	1770397.31	14582997.09	40°09'12.8676"N	80°32'5.3698"W	3112.64	283.500	1.94	
9276.00	90.680	330.200	6429.81	1853.81	809.83	-3074.55	1770349.42	14583080.23	40°09'13.6920"N	80°32'5.9813"W	3179.41	284.757	0.39	
9373.00	90.770	331.960	6428.58	1949.85	894.73	-3121.45	1770302.53	14583165.10	40°09'14.5334"N	80°32'6.5796"W	3247.15	285.994	1.82	
9470.00	90.800	333.830	6427.25	2046.27	981.06	-3165.64	1770258.36	14583251.40	40°09'15.3888"N	80°32'7.1428"W	3314.17	287.219	1.93	
9567.00	90.770	335.770	6425.92	2142.99	1068.82	-3206.93	1770217.08	14583339.12	40°09'16.2581"N	80°32'7.6687"W	3380.35	288.432	2.00	
9663.00	90.770	337.660	6424.63	2238.89	1156.99	-3244.88	1770179.15	14583427.26	40°09'17.1314"N	80°32'8.1515"W	3444.97	289.624	1.97	
9760.00	90.890	339.520	6423.23	2335.87	1247.28	-3280.28	1770143.76	14583517.51	40°09'18.0255"N	80°32'8.6013"W	3509.41	290.819	1.92	
9857.00	90.830	341.010	6421.77	2432.84	1338.57	-3313.03	1770111.02	14583608.77	40°09'18.9293"N	80°32'9.0170"W	3573.23	292.000	1.54	
9953.00	90.950	341.270	6420.28	2528.76	1429.40	-3344.06	1770080.01	14583699.57	40°09'19.8285"N	80°32'9.4105"W	3636.75	293.144	0.30	
10050.00	90.800	340.980	6418.80	2625.69	1521.18	-3375.44	1770048.64	14583791.31	40°09'20.7370"N	80°32'9.8084"W	3702.37	294.259	0.34	
10146.00	90.460	340.890	6417.74	2721.64	1611.91	-3406.79	1770017.30	14583882.00	40°09'21.6352"N	80°32'10.2061"W	3768.88	295.321	0.37	
10243.00	90.460	340.840	6416.96	2814.54	1703.54	-3438.59	1769985.52	14583973.60	40°09'22.5424"N	80°32'10.6094"W	3837.44	296.355	0.05	
10339.00	90.460	340.850	6416.19	2919.54	1794.23	-3470.09	1769954.03	14584064.25	40°09'23.4401"N	80°32'11.0090"W	3906.50	297.341	0.01	
10436.00	90.460	340.890	6415.42	3011.49	1885.87	-3501.87	1769922.25	14584155.86	40°09'24.3474"N	80°32'11.4122"W	3977.39	298.304	0.04	
10533.00	90.430	340.940	6414.66	3108.44	1977.53	-3533.59	1769890.55	14584247.49	40°09'25.2548"N	80°32'11.8145"W	4049.31	299.233	0.06	

APR 30 2024



WV Department of
Environmental Protection

Actual Wellpath Report

Roy Riggle OHI 401H awp Proj: 25146'
Page 6 of 12



REFERENCE WELLPATH IDENTIFICATION			
Operator	SWN PRODUCTION COMPANY, LLC	Well	Roy Riggle OHI 401H
Field	Ohio	API	47069003630000
Facility	Roy Riggle OHI Pad	Wellbore	Roy Riggle OHI 401H AWB
Slot	401H		

WELLPATH DATA (272 stations)														
MD [ft]	Inclination [°]	Azimuth [°]	TVD [ft]	Vert Sect [ft]	North [ft]	East [ft]	Grid East [US ft]	Grid North [US ft]	Latitude	Longitude	Closure Dist [ft]	Closure Dir [°]	DLS [°/100ft]	Comments
10629.00	90.460	341.150	6413.92	3204.38	2068.32	-3564.77	1769859.38	14584338.24	40°09'26.1536"N	80°32'12.2100"W	4121.35	300.123	0.22	
10726.00	90.490	340.990	6413.11	3301.32	2160.07	-3596.24	1769827.93	14584429.96	40°09'27.0619"N	80°32'12.6091"W	4195.10	300.991	0.17	
10822.00	90.460	340.640	6412.32	3397.27	2250.74	-3627.78	1769796.39	14584520.59	40°09'27.9595"N	80°32'13.0093"W	4269.27	301.816	0.37	
10919.00	90.340	340.470	6411.64	3494.24	2342.20	-3660.07	1769764.11	14584612.02	40°09'28.8650"N	80°32'13.4191"W	4345.35	302.617	0.21	
11016.00	90.460	340.750	6410.96	3591.20	2433.70	-3692.28	1769731.92	14584703.48	40°09'29.7708"N	80°32'13.8277"W	4422.19	303.390	0.31	
11112.00	90.370	340.700	6410.27	3687.16	2524.32	-3723.97	1769700.25	14584794.06	40°09'30.6679"N	80°32'14.2297"W	4498.90	304.132	0.11	
11209.00	90.430	340.550	6409.59	3784.12	2615.82	-3756.14	1769668.08	14584885.53	40°09'31.5738"N	80°32'14.6380"W	4577.24	304.854	0.17	
11306.00	90.620	340.550	6408.70	3881.08	2707.28	-3788.44	1769635.79	14584976.96	40°09'32.4793"N	80°32'15.0479"W	4656.36	305.550	0.20	
11402.00	90.460	340.130	6407.80	3977.06	2797.68	-3820.74	1769603.51	14585067.32	40°09'33.3743"N	80°32'15.4578"W	4735.51	306.213	0.47	
11499.00	90.400	339.340	6407.07	4074.05	2888.67	-3854.34	1769569.93	14585158.28	40°09'34.2752"N	80°32'15.8844"W	4816.67	306.850	0.82	
11596.00	90.370	339.460	6406.42	4171.04	2979.47	-3888.46	1769535.81	14585249.04	40°09'35.1742"N	80°32'16.3179"W	4898.71	307.461	0.13	
11692.00	90.520	339.650	6405.67	4267.04	3069.42	-3922.00	1769502.29	14585338.96	40°09'36.0648"N	80°32'16.7437"W	4980.30	308.047	0.25	
11789.00	90.580	339.850	6404.74	4364.03	3160.42	-3955.57	1769468.73	14585429.92	40°09'36.9658"N	80°32'17.1700"W	5063.08	308.624	0.22	
11885.00	90.460	339.770	6403.87	4460.02	3250.52	-3988.70	1769435.61	14585519.99	40°09'37.8578"N	80°32'17.5907"W	5145.44	309.178	0.15	
11981.00	90.620	340.080	6402.96	4556.00	3340.68	-4021.65	1769402.68	14585610.11	40°09'38.7505"N	80°32'18.0091"W	5228.17	309.716	0.36	
12078.00	90.430	339.770	6402.07	4652.99	3431.78	-4054.94	1769369.40	14585701.18	40°09'39.6525"N	80°32'18.4318"W	5312.22	310.242	0.37	
12175.00	90.430	340.020	6401.35	4749.97	3522.87	-4088.28	1769336.07	14585792.23	40°09'40.5543"N	80°32'18.8551"W	5396.73	310.751	0.26	
12271.00	90.620	340.260	6400.47	4845.95	3613.16	-4120.90	1769303.47	14585882.49	40°09'41.4482"N	80°32'19.2691"W	5480.57	311.244	0.32	
12368.00	90.550	340.100	6399.48	4942.93	3704.40	-4153.78	1769270.59	14585973.70	40°09'42.3516"N	80°32'19.6866"W	5565.66	311.727	0.18	
12464.00	90.460	339.080	6398.63	5038.92	3794.37	-4187.26	1769237.13	14586063.63	40°09'43.2423"N	80°32'20.1118"W	5650.70	312.182	1.07	
12560.00	90.550	339.180	6397.78	5134.92	3884.07	-4221.46	1769202.94	14586153.30	40°09'44.1305"N	80°32'20.5463"W	5736.44	312.616	0.14	
12657.00	90.490	339.530	6396.90	5231.91	3974.84	-4255.66	1769168.76	14586244.03	40°09'45.0292"N	80°32'20.9807"W	5823.23	313.046	0.37	
12753.00	90.460	338.800	6396.11	5327.91	4064.56	-4289.80	1769134.63	14586333.72	40°09'45.9157"N	80°32'21.4145"W	5909.57	313.456	0.76	
12850.00	90.340	339.540	6395.43	5424.91	4155.21	-4324.29	1769100.15	14586424.34	40°09'46.8152"W	80°32'21.8527"W	5997.11	313.858	0.77	
12946.00	90.520	339.530	6394.71	5520.90	4245.15	-4357.86	1769066.60	14586514.24	40°09'47.7057"N	80°32'22.2790"W	6083.77	314.249	0.19	
13043.00	90.340	339.210	6393.98	5617.90	4335.93	-4392.03	1769032.43	14586604.98	40°09'48.6045"N	80°32'22.7131"W	6171.73	314.632	0.38	
13139.00	90.490	339.350	6393.29	5713.89	4425.72	-4426.00	1768998.48	14586694.74	40°09'49.4935"N	80°32'23.1446"W	6259.11	314.998	0.21	
13236.00	90.520	339.480	6392.43	5810.89	4516.52	-4460.10	1768964.39	14586785.51	40°09'50.3925"N	80°32'23.5778"W	6347.56	315.360	0.14	
13332.00	90.620	339.570	6391.48	5906.88	4606.45	-4493.68	1768930.83	14586875.40	40°09'51.2829"N	80°32'24.0043"W	6435.26	315.710	0.14	
13429.00	90.490	339.650	6390.54	6003.87	4697.37	-4527.47	1768897.04	14586966.29	40°09'52.1831"N	80°32'24.4335"W	6524.06	316.055	0.16	

APR 30 2024



WV Department of
Environmental Protection

Southwestern Energy®

Actual Wellpath Report

Roy Riggle OHI 401H awp Proj: 25146'

Page 7 of 12



REFERENCE WELLPATH IDENTIFICATION

Operator	SWN PRODUCTION COMPANY, LLC	Well	Roy Riggle OHI 401H
Field	Ohio	API	47069003630000
Facility	Roy Riggle OHI Pad	Wellbore	Roy Riggle OHI 401H AWB
Slot	401H		

WELLPATH DATA (272 stations)

MD [ft]	Inclination [°]	Azimuth [°]	TVD [ft]	Vert Sect [ft]	North [ft]	East [ft]	Grid East [US ft]	Grid North [US ft]	Latitude	Longitude	Closure Dist [ft]	Closure Dir [°]	DLS [°/100ft]	Comments
13526.00	90.490	339.440	6389.71	6100.87	4788.25	-4561.37	1768863.16	14587057.13	40°09'53.0829"N	80°32'24.8640"W	6613.13	316.390	0.22	
13622.00	90.520	339.630	6388.86	6196.86	4878.19	-4594.93	1768829.61	14587147.04	40°09'53.9734"N	80°32'25.2904"W	6701.50	316.713	0.20	
13719.00	90.520	339.520	6387.98	6293.85	4969.09	-4628.78	1768795.77	14587237.90	40°09'54.8734"N	80°32'25.7203"W	6790.98	317.031	0.11	
13815.00	90.620	339.600	6387.03	6389.84	5059.04	-4662.31	1768762.26	14587327.82	40°09'55.7640"N	80°32'26.1461"W	6879.75	317.337	0.13	
13912.00	90.650	339.110	6385.95	6486.84	5149.80	-4696.51	1768728.08	14587418.55	40°09'56.6627"N	80°32'26.5806"W	6969.77	317.636	0.51	
14008.00	90.520	339.270	6384.97	6582.83	5239.53	-4730.61	1768693.99	14587508.24	40°09'57.5511"N	80°32'27.0139"W	7059.14	317.922	0.21	
14104.00	90.490	338.750	6384.13	6678.83	5329.16	-4765.00	1768659.61	14587597.84	40°09'58.4386"N	80°32'27.4508"W	7148.79	318.199	0.54	
14201.00	90.550	338.900	6383.24	6775.82	5419.61	-4800.03	1768624.59	14587688.25	40°09'59.3341"N	80°32'27.8961"W	7239.65	318.469	0.17	
14297.00	90.310	338.420	6382.52	6871.82	5509.02	-4834.97	1768589.67	14587777.63	40°10'0.2195"N	80°32'28.3401"W	7329.82	318.728	0.56	
14394.00	91.080	338.710	6381.35	6968.80	5599.31	-4870.41	1768554.24	14587867.88	40°10'1.1135"N	80°32'28.7907"W	7421.13	318.982	0.85	
14490.00	90.400	338.710	6380.11	7064.79	5688.75	-4905.27	1768519.40	14587957.28	40°10'1.9991"N	80°32'29.2337"W	7511.56	319.230	0.71	
14587.00	90.520	339.000	6379.33	7161.79	5779.21	-4940.26	1768484.42	14588047.72	40°10'2.8949"N	80°32'29.6784"W	7602.99	319.475	0.32	
14683.00	90.490	339.310	6378.48	7257.78	5868.93	-4974.41	1768450.27	14588137.40	40°10'3.7832"N	80°32'30.1124"W	7693.44	319.716	0.32	
14780.00	90.580	338.770	6377.58	7354.78	5959.50	-5009.11	1768415.59	14588227.94	40°10'4.6800"N	80°32'30.5533"W	7785.04	319.952	0.56	
14876.00	90.550	338.790	6376.63	7450.77	6048.99	-5043.86	1768380.86	14588317.39	40°10'5.5661"N	80°32'30.9950"W	7875.96	320.177	0.04	
14972.00	91.080	338.640	6375.27	7546.76	6138.43	-5078.70	1768346.03	14588406.80	40°10'6.4517"N	80°32'31.4379"W	7967.03	320.397	0.57	
15165.00	90.920	338.710	6371.90	7739.73	6318.19	-5148.88	1768275.88	14588586.49	40°10'8.2316"N	80°32'32.3299"W	8150.49	320.822	0.09	
15261.00	91.020	338.980	6370.27	7835.71	6407.71	-5183.52	1768241.25	14588675.97	40°10'9.1180"N	80°32'32.7702"W	8241.82	321.029	0.30	
15357.00	90.860	338.690	6368.70	7931.70	6497.22	-5218.17	1768206.61	14588765.45	40°10'10.0043"N	80°32'33.2106"W	8333.26	321.231	0.34	
15454.00	91.020	339.080	6367.11	8028.68	6587.69	-5253.11	1768171.68	14588855.89	40°10'10.9002"N	80°32'33.6547"W	8425.73	321.431	0.43	
15551.00	90.770	338.490	6365.59	8125.67	6678.11	-5288.21	1768136.60	14588946.27	40°10'11.7954"N	80°32'34.1008"W	8518.35	321.625	0.66	
15647.00	91.050	338.680	6364.07	8221.66	6767.47	-5323.26	1768101.57	14589035.60	40°10'12.6803"N	80°32'34.5463"W	8610.21	321.812	0.35	
15743.00	91.570	338.830	6361.87	8317.63	6856.92	-5358.02	1768066.80	14589125.01	40°10'13.5660"N	80°32'34.9884"W	8702.06	322.199	0.56	
15840.00	91.420	338.850	6359.34	8414.59	6947.35	-5393.04	1768031.81	14589215.41	40°10'14.4614"N	80°32'35.4333"W	8794.91	322.179	0.16	
15936.00	91.480	338.940	6356.91	8510.56	7036.88	-5427.59	1767997.27	14589304.91	40°10'15.3479"N	80°32'35.8725"W	8886.87	322.357	0.11	
16032.00	91.450	338.600	6354.46	8606.53	7126.34	-5462.34	1767962.53	14589394.33	40°10'16.2336"N	80°32'36.3142"W	8978.97	322.530	0.36	
16129.00	91.660	338.710	6351.82	8703.49	7216.65	-5497.64	1767927.25	14589484.61	40°10'17.1279"N	80°32'36.7629"W	9072.16	322.700	0.24	
16225.00	91.720	338.800	6348.99	8799.45	7306.09	-5532.41	1767892.49	14589574.01	40°10'18.0135"N	80°32'37.2049"W	9164.41	322.866	0.11	
16321.00	91.720	338.700	6346.11	8895.40	7395.52	-5567.19	1767857.73	14589663.41	40°10'18.8990"N	80°32'37.6470"W	9256.74	323.028	0.10	
16418.00	91.750	338.990	6343.17	8992.36	7485.94	-5602.18	1767822.75	14589753.79	40°10'19.7943"N	80°32'38.0917"W	9350.07	323.190	0.30	



RECEIVED
Office Of Oil and Gas
APR 30 2024
WV Department of
Environmental Protection

Actual Wellpath Report

Roy Riggle OHI 401H awp Proj: 25146'
Page 8 of 12



REFERENCE WELLPATH IDENTIFICATION

Operator	SWN PRODUCTION COMPANY, LLC	Well	Roy Riggle OHI 401H
Field	Ohio	API	47069003630000
Facility	Roy Riggle OHI Pad	Wellbore	Roy Riggle OHI 401H AWB
Slot	401H		

WELLPATH DATA (272 stations)

MD [ft]	Inclination [°]	Azimuth [°]	TVD [ft]	Vert Sect [ft]	North [ft]	East [ft]	Grid East [US ft]	Grid North [US ft]	Latitude	Longitude	Closure Dist [ft]	Closure Dir [°]	DLS [°/100ft]	Comments
16514.00	91.780	338.620	6340.22	9088.31	7575.41	-5636.87	1767788.07	14589843.22	40°10'20.6801"N	80°32'38.5327"W	9442.51	323.347	0.39	
16611.00	91.720	338.670	6337.26	9185.26	7665.70	-5672.17	1767752.78	14589933.49	40°10'21.5743"N	80°32'38.9815"W	9536.07	323.501	0.08	
16707.00	92.060	338.680	6334.09	9281.21	7755.08	-5707.07	1767717.90	14590022.83	40°10'22.4592"N	80°32'39.4251"W	9628.70	323.650	0.35	
16803.00	91.910	338.750	6330.76	9377.15	7844.48	-5741.89	1767683.09	14590112.19	40°10'23.3444"N	80°32'39.8679"W	9721.38	323.797	0.17	
16900.00	92.060	338.890	6327.40	9474.09	7934.87	-5776.92	1767648.08	14590202.55	40°10'24.2395"N	80°32'40.3131"W	9815.04	323.944	0.21	
16997.00	92.060	338.800	6323.92	9571.02	8025.28	-5811.90	1767613.11	14590292.92	40°10'25.1346"N	80°32'40.7578"W	9908.75	324.088	0.09	
17093.00	91.940	338.920	6320.57	9666.97	8114.76	-5846.50	1767578.52	14590382.37	40°10'26.0206"N	80°32'41.1976"W	10001.55	324.228	0.18	
17189.00	91.940	338.800	6317.32	9762.91	8204.25	-5881.11	1767543.93	14590471.83	40°10'26.9067"N	80°32'41.6375"W	10094.41	324.366	0.12	
17286.00	91.970	338.790	6314.01	9859.85	8294.63	-5916.17	1767508.88	14590562.17	40°10'27.8016"N	80°32'42.0832"W	10188.33	324.502	0.03	
17382.00	92.000	338.900	6310.68	9955.79	8384.11	-5950.80	1767474.26	14590651.62	40°10'28.6876"N	80°32'42.5234"W	10281.30	324.634	0.12	
17479.00	91.910	338.700	6307.37	10052.74	8474.49	-5985.85	1767439.22	14590741.96	40°10'29.5825"N	80°32'42.9690"W	10375.33	324.765	0.23	
17575.00	91.970	338.660	6304.12	10148.68	8563.87	-6020.74	1767404.35	14590831.31	40°10'30.4675"N	80°32'43.4125"W	10468.48	324.891	0.08	
17672.00	92.030	338.810	6300.74	10245.62	8654.21	-6055.90	1767369.21	14590921.61	40°10'31.3620"N	80°32'43.8595"W	10562.63	325.017	0.17	
17768.00	91.910	339.270	6297.44	10341.56	8743.80	-6090.22	1767334.90	14591011.18	40°10'32.2491"N	80°32'44.2957"W	10655.74	325.142	0.49	
17865.00	91.910	338.510	6294.21	10438.50	8834.24	-6125.13	1767300.00	14591101.58	40°10'33.1446"N	80°32'44.7395"W	10749.93	325.265	0.78	
17961.00	91.850	338.660	6291.06	10534.45	8923.57	-6160.17	1767264.98	14591190.87	40°10'34.0290"N	80°32'45.1850"W	10843.32	325.382	0.17	
18058.00	92.000	339.010	6287.80	10631.39	9013.97	-6195.17	1767229.99	14591281.24	40°10'34.9242"N	80°32'45.6299"W	10937.63	325.500	0.39	
18154.00	92.030	338.710	6284.42	10727.33	9103.46	-6229.77	1767195.40	14591370.69	40°10'35.8102"N	80°32'46.0698"W	11031.00	325.615	0.31	
18250.00	92.060	338.950	6281.00	10823.27	9192.92	-6264.42	1767160.77	14591460.12	40°10'36.6960"N	80°32'46.5103"W	11124.42	325.728	0.25	
18347.00	91.380	338.980	6278.09	10920.23	9283.42	-6299.22	1767125.98	14591550.58	40°10'37.5921"N	80°32'46.9526"W	11218.82	325.841	0.70	
18444.00	91.600	339.010	6275.56	11017.19	9373.94	-6333.97	1767091.23	14591641.07	40°10'38.4884"N	80°32'47.3945"W	11313.26	325.953	0.23	
18540.00	91.510	338.680	6272.96	11113.16	9463.44	-6368.61	1767056.61	14591730.53	40°10'39.3745"N	80°32'47.8348"W	11406.83	326.061	0.36	
18636.00	90.950	338.870	6270.90	11209.13	9552.90	-6403.35	1767021.88	14591819.97	40°10'40.2604"N	80°32'48.2765"W	11500.47	326.166	0.62	
18732.00	90.980	338.860	6269.28	11305.12	9642.43	-6437.96	1766987.28	14591909.46	40°10'41.1488"N	80°32'48.7165"W	11594.13	326.270	0.03	
18829.00	91.110	339.210	6267.51	11402.01	9733.00	-6472.66	1766952.60	14591999.99	40°10'42.0435"N	80°32'49.1576"W	11688.74	326.375	0.38	
18925.00	91.020	339.080	6265.73	11498.09	9822.69	-6506.83	1766918.44	14592089.65	40°10'42.9316"N	80°32'49.5919"W	11782.37	326.478	0.16	
19022.00	90.920	338.630	6264.08	11595.07	9913.15	-6541.82	1766883.47	14592180.07	40°10'43.8272"N	80°32'50.0367"W	11877.12	326.579	0.48	
19118.00	91.050	338.780	6262.43	11691.05	10002.58	-6576.68	1766848.62	14592269.47	40°10'44.7128"N	80°32'50.4799"W	11970.98	326.675	0.21	
19215.00	90.920	338.710	6260.77	11788.04	10092.97	-6611.84	1766813.48	14592359.82	40°10'45.6077"N	80°32'50.9270"W	12065.84	326.771	0.15	
19312.00	90.770	338.380	6259.34	11885.02	10183.24	-6647.31	1766778.01	14592450.06	40°10'46.5015"N	80°32'51.3781"W	12160.80	326.865	0.37	



Actual Wellpath Report

Roy Riggle OHI 401H awp Proj: 25146'
Page 9 of 12

RECEIVED
Office Of Oil and Gas
APR 30 2024



WV Department of
Environmental Protection

REFERENCE WELLPATH IDENTIFICATION

Operator	Well	Roy Riggle OHI 401H
Field	API	47069003630000
Facility	Wellbore	Roy Riggle OHI 401H AWB
Slot		

WELLPATH DATA (272 stations)

MD [ft]	Inclination [°]	Azimuth [°]	TVD [ft]	Vert Sect [ft]	North [ft]	East [ft]	Grid East [US ft]	Grid North [US ft]	Latitude	Longitude	Closure Dist [ft]	Closure Dir [°]	DLS ["/100ft]	Comments
19409.00	90.950	338.920	6257.88	11982.01	10273.57	-6682.62	1766742.72	14592540.36	40°10'47.3960"N	80°32'51.8271"W	12255.76	326.957	0.59	
19505.00	90.920	338.590	6256.31	12077.99	10363.03	-6717.41	1766707.95	14592629.79	40°10'48.2818"N	80°32'52.2693"W	12349.74	327.048	0.35	
19601.00	91.050	339.090	6254.66	12173.98	10452.55	-6752.05	1766673.31	14592719.27	40°10'49.1681"N	80°32'52.7098"W	12443.71	327.139	0.54	
19698.00	90.950	338.480	6252.97	12270.96	10542.96	-6787.15	1766638.23	14592809.64	40°10'50.0633"N	80°32'53.1560"W	12538.71	327.228	0.64	
19795.00	90.950	338.830	6251.36	12367.95	10633.29	-6822.45	1766602.94	14592899.94	40°10'50.9578"N	80°32'53.6049"W	12633.79	327.315	0.36	
19891.00	90.920	338.730	6249.80	12463.93	10722.77	-6857.19	1766568.21	14592989.39	40°10'51.8437"N	80°32'54.0467"W	12727.88	327.401	0.11	
19988.00	91.050	338.650	6248.13	12560.92	10813.13	-6892.44	1766532.98	14593079.71	40°10'52.7384"N	80°32'54.4948"W	12823.00	327.486	0.16	
20084.00	90.860	338.530	6246.53	12656.90	10902.40	-6927.48	1766497.96	14593169.04	40°10'53.6232"N	80°32'54.9404"W	12917.21	327.568	0.23	
20181.00	90.950	338.800	6245.00	12753.88	10992.83	-6962.76	1766462.68	14593259.34	40°10'54.5177"N	80°32'55.3891"W	13012.39	327.650	0.29	
20277.00	90.950	339.060	6243.40	12849.87	11082.40	-6997.27	1766428.19	14593348.88	40°10'55.4046"N	80°32'55.8279"W	13106.54	327.732	0.27	
20374.00	91.110	339.080	6241.66	12946.85	11172.98	-7031.92	1766393.56	14593439.43	40°10'56.3015"N	80°32'56.2683"W	13201.64	327.815	0.17	
20470.00	90.920	338.720	6239.96	13042.84	11262.53	-7066.47	1766359.02	14593528.94	40°10'57.1881"N	80°32'56.7076"W	13295.85	327.895	0.42	
20567.00	90.950	338.770	6238.38	13139.82	11352.92	-7101.63	1766323.87	14593619.30	40°10'58.0831"N	80°32'57.1547"W	13391.12	327.973	0.06	
20663.00	90.950	338.680	6236.79	13235.81	11442.37	-7136.46	1766289.05	14593708.71	40°10'58.9549"N	80°32'57.5976"W	13485.43	328.049	0.09	
20759.00	91.350	338.980	6234.86	13331.79	11531.87	-7171.12	1766254.41	14593798.18	40°10'59.8549"N	80°32'58.0383"W	13579.73	328.124	0.52	
20855.00	91.050	338.860	6232.85	13427.77	11621.43	-7205.64	1766219.90	14593887.70	40°11'0.7417"N	80°32'58.4772"W	13674.02	328.200	0.34	
20952.00	91.020	338.700	6231.10	13524.75	11711.83	-7240.75	1766184.81	14593978.07	40°11'1.6368"N	80°32'58.9236"W	13769.37	328.274	0.17	
21048.00	91.020	338.650	6229.39	13620.73	11801.25	-7275.65	1766149.92	14594067.45	40°11'2.5221"N	80°32'59.3675"W	13863.79	328.346	0.05	
21145.00	91.020	338.620	6227.66	13717.71	11891.57	-7310.98	1766114.60	14594157.74	40°11'3.4164"N	80°32'59.8168"W	13959.22	328.417	0.03	
21241.00	91.110	338.790	6225.88	13813.69	11981.00	-7345.84	1766079.75	14594247.13	40°11'4.3019"N	80°33'0.2601"W	14053.67	328.487	0.20	
21338.00	91.020	338.670	6224.07	13910.68	12071.37	-7381.02	1766044.58	14594337.48	40°11'5.1968"N	80°33'0.7075"W	14149.12	328.556	0.15	
21434.00	90.920	338.480	6222.45	14006.66	12160.73	-7416.09	1766009.53	14594426.79	40°11'6.0815"N	80°33'1.1534"W	14243.65	328.624	0.22	
21531.00	90.920	341.680	6220.89	14103.62	12251.90	-7449.13	1765976.51	14594517.93	40°11'6.9841"N	80°33'1.5732"W	14338.71	328.700	3.30	
21627.00	90.920	343.580	6219.35	14199.42	12343.51	-7477.78	1765947.86	14594609.50	40°11'7.8908"N	80°33'1.9364"W	14433.89	328.792	1.98	
21723.00	90.680	345.640	6218.01	14294.96	12436.05	-7503.26	1765922.40	14594702.01	40°11'8.8066"N	80°33'2.2586"W	14524.26	328.895	2.16	
21820.00	90.740	345.850	6216.81	14391.30	12530.06	-7527.14	1765898.53	14594795.98	40°11'9.7367"N	80°33'2.5602"W	14617.12	329.006	0.23	
21916.00	90.710	345.740	6215.59	14486.63	12623.11	-7550.69	1765874.98	14594889.00	40°11'10.6575"N	80°33'2.8576"W	14709.04	329.114	0.12	
22013.00	90.580	345.760	6214.50	14582.97	12717.12	-7574.57	1765851.11	14594982.98	40°11'11.5877"N	80°33'3.1591"W	14802.00	329.221	0.14	
22109.00	90.680	346.040	6213.44	14678.29	12810.22	-7597.96	1765827.74	14595076.04	40°11'12.5089"N	80°33'3.4543"W	14893.98	329.327	0.31	
22206.00	90.680	345.790	6212.29	14774.59	12904.30	-7621.56	1765804.14	14595170.09	40°11'13.4397"N	80°33'3.7523"W	14986.97	329.433	0.26	

WV Department of

REFERENCE WELLPATH IDENTIFICATION

Operator	SWN PRODUCTION COMPANY, LLC	Well	Roy Riggle OHI 401H
Field	Ohio	API	47069003630000
Facility	Roy Riggle OHI Pad	Wellbore	Roy Riggle OHI 401H AWB
Slot	401H		

WELLPATH DATA (272 stations)

MD [ft]	Inclination [°]	Azimuth [°]	TVD [ft]	Vert Sect [ft]	North [ft]	East [ft]	Grid East [US ft]	Grid North [US ft]	Latitude	Longitude	Closure Dist [ft]	Closure Dir [°]	DLS ["/100ft]	Comments
22302.00	90.460	345.000	6211.34	14870.01	12997.19	-7645.76	1765779.94	14595262.94	40°11'14.3589"N	80°33'4.0582"W	15079.28	329.533	0.85	
22399.00	90.680	345.680	6210.37	14966.43	13091.03	-7670.31	1765755.41	14595356.74	40°11'15.2874"N	80°33'4.3684"W	15172.63	329.633	0.74	
22495.00	90.620	345.740	6209.28	15061.78	13184.05	-7694.01	1765731.72	14595449.73	40°11'16.2078"N	80°33'4.6676"W	15264.90	329.733	0.09	
22592.00	90.710	345.880	6208.16	15158.11	13278.09	-7717.78	1765707.95	14595543.73	40°11'17.1382"N	80°33'4.9678"W	15358.12	329.833	0.17	
22688.00	90.770	346.140	6206.92	15253.40	13371.23	-7740.99	1765684.76	14595636.84	40°11'18.0599"N	80°33'5.2608"W	15450.33	329.932	0.28	
22784.00	90.680	345.790	6205.97	15348.70	13464.36	-7764.27	1765661.48	14595729.93	40°11'18.9813"N	80°33'5.5547"W	15542.61	330.030	0.38	
22881.00	90.740	345.850	6204.50	15445.03	13558.40	-7788.03	1765637.73	14595823.93	40°11'19.9117"N	80°33'5.8547"W	15635.97	330.127	0.09	
22978.00	90.770	345.880	6203.22	15541.34	13652.45	-7811.72	1765614.06	14595917.95	40°11'20.8424"N	80°33'6.1538"W	15729.35	330.222	0.04	
23074.00	90.830	346.130	6201.88	15636.63	13745.59	-7834.93	1765590.85	14596011.06	40°11'21.7639"N	80°33'6.4468"W	15821.74	330.317	0.27	
23171.00	90.800	344.270	6200.50	15733.07	13839.36	-7859.70	1765566.09	14596104.79	40°11'22.6918"N	80°33'6.7600"W	15915.49	330.407	1.92	
23267.00	90.710	344.460	6199.24	15828.65	13931.80	-7885.57	1765540.23	14596197.19	40°11'23.6065"N	80°33'7.0873"W	16008.67	330.490	0.22	
23364.00	90.620	344.550	6198.11	15925.21	14025.27	-7911.49	1765514.32	14596290.62	40°11'24.5315"N	80°33'7.4151"W	16102.79	330.573	0.13	
23460.00	90.710	344.410	6197.00	16020.78	14117.76	-7937.17	1765488.65	14596383.08	40°11'25.4468"N	80°33'7.7401"W	16195.98	330.655	0.17	
23557.00	90.680	344.360	6195.82	16117.36	14211.18	-7963.28	1765462.55	14596476.46	40°11'26.3712"N	80°33'8.0704"W	16290.22	330.736	0.06	
23654.00	90.740	344.330	6194.62	16213.95	14304.57	-7989.45	1765436.39	14596569.82	40°11'27.2954"N	80°33'8.4016"W	16384.51	330.816	0.07	
23750.00	90.740	342.650	6193.38	16309.65	14396.60	-8016.73	1765409.12	14596661.81	40°11'28.2062"N	80°33'8.7471"W	16478.17	330.889	1.75	
23847.00	90.680	343.410	6192.18	16406.41	14489.37	-8045.04	1765380.82	14596754.55	40°11'29.1243"N	80°33'9.1059"W	16573.01	330.959	0.79	
23943.00	90.650	343.360	6191.06	16502.14	14581.36	-8072.49	1765353.38	14596846.50	40°11'30.0347"N	80°33'9.4536"W	16666.76	331.030	0.06	
24040.00	90.650	343.300	6189.96	16598.87	14674.27	-8100.31	1765325.57	14596939.38	40°11'30.9543"N	80°33'9.8061"W	16761.54	331.101	0.06	
24136.00	90.740	343.570	6188.80	16694.58	14766.28	-8127.68	1765298.21	14597031.35	40°11'31.8648"N	80°33'10.1527"W	16855.33	331.171	0.30	
24233.00	90.860	343.330	6187.44	16791.29	14859.25	-8155.31	1765270.60	14597124.29	40°11'32.7850"N	80°33'10.5027"W	16950.12	331.240	0.28	
24329.00	90.710	343.800	6186.13	16886.99	14951.32	-8182.47	1765243.45	14597216.32	40°11'33.6961"N	80°33'10.8467"W	17043.91	331.309	0.51	
24426.00	90.710	343.520	6184.93	16983.68	15044.40	-8209.75	1765216.17	14597309.36	40°11'34.6172"N	80°33'11.1923"W	17138.67	331.379	0.29	
24522.00	90.800	343.580	6183.66	17079.38	15136.46	-8236.94	1765189.00	14597404.39	40°11'35.5283"N	80°33'11.5366"W	17232.51	331.446	0.11	
24619.00	90.740	343.570	6182.36	17176.07	15229.49	-8264.36	1765161.58	14597494.39	40°11'36.4491"N	80°33'11.8839"W	17327.35	331.513	0.06	
24715.00	90.740	343.320	6181.12	17271.78	15321.52	-8291.67	1765134.29	14597586.38	40°11'37.3598"N	80°33'12.2298"W	17421.27	331.579	0.20	
24811.00	90.770	343.120	6179.85	17367.52	15413.44	-8319.33	1765106.64	14597678.26	40°11'38.2695"N	80°33'12.5803"W	17515.29	331.642	0.27	
24908.00	90.650	343.490	6178.65	17464.25	15506.34	-8347.19	1765078.78	14597771.13	40°11'39.1890"N	80°33'12.9334"W	17610.29	331.706	0.40	
25005.00	90.620	343.000	6177.58	17560.99	15599.22	-8375.15	1765050.83	14597863.97	40°11'40.1081"N	80°33'13.2877"W	17705.33	331.769	0.51	
25101.00	90.740	343.190	6176.44	17656.75	15691.06	-8403.07	1765022.93	14597955.78	40°11'41.0171"N	80°33'13.6414"W	17799.47	331.830	0.23	

REFERENCE WELLPATH IDENTIFICATION

Operator	SWN PRODUCTION COMPANY, LLC		Well	Roy Riggle OHI 401H
Field	Ohio		API	47069003630000
Facility	Roy Riggle OHI Pad		Wellbore	Roy Riggle OHI 401H AWB
Slot	401H			

WELLPATH DATA (272 stations) † = interpolated, ‡ = extrapolated station

MD [ft]	Inclination [°]	Azimuth [°]	TVD [ft]	Vert Sect [ft]	North [ft]	East [ft]	Grid East [US ft]	Grid North [US ft]	Latitude	Longitude	Closure Dist [ft]	Closure Dir [°]	DLS ["/100ft]	Comments
25121.00	90.710	343.460	6176.18	17676.69	15710.22	-8408.81	1765017.19	14597974.93	40°11'41.2067"N	80°33'13.7141"W	17819.06	331.842	1.36	
25146.00†	90.710	343.460	6175.87	17701.62	15734.18	-8415.92	1765010.08	14597998.89	40°11'41.4439"N	80°33'13.8043"W	17843.55	331.859	0.00	

HOLE & CASING SECTIONS - Ref Wellbore: Roy Riggle OHI 401H AWB Ref Wellpath: Roy Riggle OHI 401H awp Proj: 25146'

String/Diameter	Start MD [ft]	End MD [ft]	Interval [ft]	Start TVD [ft]	End TVD [ft]	Start N/S [ft]	End N/S [ft]	Start E/W [ft]	End E/W [ft]	End E/W [ft]
13.375in Casing	26.00	678.00	652.00	26.00	677.99	0.00	1.40	0.00	0.00	-2.02
9.625in Casing	26.00	2075.00	2049.00	26.00	2026.10	0.00	-194.64	0.00	0.00	-246.85

RECEIVED
Office Of Oil and Gas

APR 30 2024

WV Department of
Environmental Protection

REFERENCE WELLPATH IDENTIFICATION

Operator	SWN PRODUCTION COMPANY, LLC	Well	Roy Riggle OHI 401H
Field	Ohio	API	47069003630000
Facility	Roy Riggle OHI Pad	Wellbore	Roy Riggle OHI 401H AWB
Slot	401H		

TARGETS

Name	TVD [ft]	North [ft]	East [ft]	Grid East [US ft]	Grid North [US ft]	Latitude	Longitude	Shape
Roy Riggle OHI 401H BHL Rev 2	6178.00	15734.07	-8418.05	1765007.95	14597998.77	40°11'41.4428"N	80°33'13.8317"W	point
Roy Riggle OHI 401H LP Rev-2	6463.00	-884.95	-2114.84	1771308.76	14581386.10	40°08'56.8945"N	80°31'53.7368"W	point
Roy Riggle OHI 401HWP5	6553.70	15734.07	-8418.05	1765007.95	14597998.77	40°11'41.4428"N	80°33'13.8317"W	point
Roy Riggle OHI 401HWP3	6554.70	12019.76	-7337.29	1766088.30	14594285.88	40°11'4.6845"N	80°33'0.1474"W	point
Roy Riggle OHI 401HWP1	6556.70	605.27	-2959.00	1770464.92	14582875.75	40°09'11.6646"N	80°32'4.5070"W	point

WELLPATH COMPOSITION - Ref Wellbore: Roy Riggle OHI 401H AWB Ref Wellpath: Roy Riggle OHI 401H awp Proj: 25146'

Start MD [ft]	End MD [ft]	Positional Uncertainty Model	Log Name/Comment	Wellbore	Survey Date
26.00	583.00	Gyrodata 2015 - GC+WIR+DPIPE	1 Gyrodata IFR 17.5' 100' - 583'	Roy Riggle OHI 401H AWB	12/16/2023
583.00	2004.00	OWSG MWD rev2 + IFR1 + Multi-Station Correction	2 Total MWD IFR-MSA 12.25' 688' - 2004'	Roy Riggle OHI 401H AWB	12/16/2023
2004.00	6075.00	OWSG MWD rev2 + IFR1 + Multi-Station Correction	3. Total MWD IFR-MSA 8.75' 2065' - 6075'	Roy Riggle OHI 401H AWB	12/16/2023
6075.00	25146.00	OWSG MWD rev2 + IFR1 + Multi-Station Correction	4 BH MWD IFR-MSA 5.5' 6186' - 25121'	Roy Riggle OHI 401H AWB	12/16/2023

RECEIVED
Office Of Oil and Gas

APR 30 2024

WV Department of
Environmental Protection