



SWN PRODUCTION COMPANY, LLC



Location: Ohio County, WV
Field: Ohio
Facility: William Rodgers OHI Pad

Slot: 6H
Well: William Rodgers OHI 6H
Wellbore: William Rodgers OHI 6H AWB

Plot reference wellpath is William Rodgers OHI 6H awp Proj: 20892'	Grid System: NAD83 / UTM Zone 17 North, US feet
True vertical depths are referenced to SDC 41 (KB)	North Reference: Grid north
Reference wellpath measured depths are referenced to SDC 41 (KB)	Scale: True distance
SDC 41 (KB) to Mean Sea Level: 1305.4 feet	Coordinates are in feet referenced to Slot
Mean Sea Level to Ground level (At Slot: 6H): -1279.4 feet	Depths are in feet
Offset wellpath MDs are referenced to each path's default MD datum	Created by: tranlam on 2024-05-01; Database: WA_MPL_EASTERNUS_Defn

Location Information

Facility Name			Grid East (US ft)	Grid North (US ft)	Latitude	Longitude
William Rodgers OHI Pad			1771224.598	14566030.368	40°06'25.0960"N	80°31'55.8620"W
Slot	Local N (ft)	Local E (ft)	Grid East (US ft)	Grid North (US ft)	Latitude	Longitude
6H	-0.41	-20.11	1771204.500	14566029.960	40°06'25.0930"N	80°31'56.1208"W
SDC 41 (KB) to Ground level (At Slot: 6H)					26ft	
Mean Sea Level to Ground level (At Slot: 6H)					-1279.4ft	
SDC 41 (KB) to Mean Sea Level					1305.4ft	

Bottom Hole Location

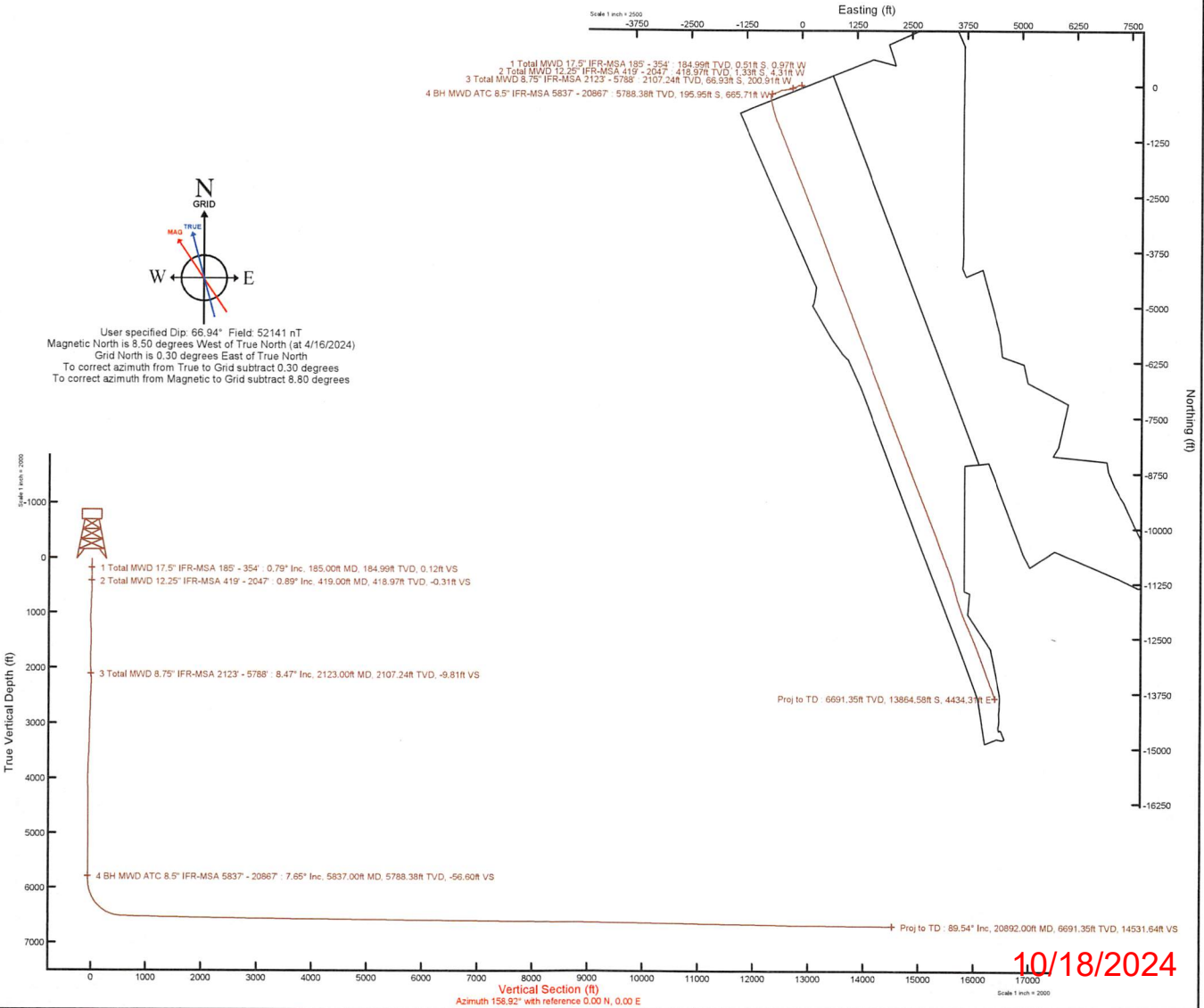
MD (ft)	Inc (°)	Az (°)	TVD (ft)	Local N (ft)	Local E (ft)	Grid East (US ft)	Grid North (US ft)	Latitude	Longitude
20892.00	89.540	159.890	6691.35	-13864.58	4434.31	1775637.11	14552170.68	40°04'7.8487"N	80°31'0.0226"W

API: 47069003650000
 BH JOB: 112207455
 DURATION: 04.25.2024 - 04.29.2024
 RIG: SDC 41

RECEIVED
 Office Of Oil and Gas

SEP 05 2024

WV Department of
 Environmental Protection





RECEIVED
Office Of Oil and Gas
SEP 05 2024
WV Department of
Environmental Protection

Actual Wellpath Report

William Rodgers OHI 6H awp Proj: 20892'
Page 1 of 10



REFERENCE WELLPATH IDENTIFICATION			
Operator	SWN PRODUCTION COMPANY, LLC	Well	William Rodgers OHI 6H
Field	Ohio	API	47069003650000
Facility	William Rodgers OHI Pad	Wellbore	William Rodgers OHI 6H AWB
Slot	6H		

REPORT SETUP INFORMATION			
Projection System	NAD83 / UTM Zone 17 North, US feet	Software System	WellArchitect® 6.0
North Reference	Grid	User	Tranlam
Scale	0.999620	Report Generated	5/1/2024 at 11:13:09 AM
Convergence at slot	0.30° East	Database	WA_MPL_EASTERNUS_Defn

WELLPATH LOCATION						
	Local coordinates		Grid coordinates		Geographic coordinates	
	North[ft]	East[ft]	Easting[US ft]	Northing[US ft]	Latitude	Longitude
Slot Location	-0.41	-20.11	1771204.50	14566029.96	40°06'25.0930"N	80°31'56.1208"W
Facility Reference Pt			1771224.60	14566030.37	40°06'25.0960"N	80°31'55.8620"W
Field Reference Pt			0.00	0.00	0°00'0.0000"	85°29'19.4780"W

WELLPATH DATUM			
Calculation method	Minimum curvature	SDC 41 (KB) to Facility Vertical Datum	1305.40ft
Horizontal Reference Pt	Slot	SDC 41 (KB) to Mean Sea Level	1305.40ft
Vertical Reference Pt	SDC 41 (KB)	SDC 41 (KB) to Ground Level at Slot (6H)	26.00ft
MD Reference Pt	SDC 41 (KB)	Section Origin	N 0.00, E 0.00 ft
Field Vertical Reference	Mean Sea Level	Section Azimuth	158.92°



Southwestern Energy®

RECEIVED
Office Of Oil and Gas

SEP 05 2024

WV Department of
Environmental Protection

Actual Wellpath Report

William Rodgers OHI 6H awp Proj: 20892'
Page 2 of 10



REFERENCE WELLPATH IDENTIFICATION			
Operator	SWN PRODUCTION COMPANY, LLC	Well	William Rodgers OHI 6H
Field	Ohio	API	47069003650000
Facility	William Rodgers OHI Pad	Wellbore	William Rodgers OHI 6H AWB
Slot	6H		

WELLPATH DATA (225 stations) † = interpolated, ‡ = extrapolated station													
MD [ft]	Inclination [°]	Azimuth [°]	TVD [ft]	Vert Sect [ft]	North [ft]	East [ft]	Grid East [US ft]	Grid North [US ft]	Latitude	Longitude	Closure Dist [ft]	Closure Dir [°]	DLS [°/100ft]
0.00†	0.000	242.480	0.00	0.00	0.00	0.00	1771204.50	14566029.96	40°06'25.0930"N	80°31'56.1208"W	0.00	0.000	0.00
26.00	0.000	242.480	26.00	0.00	0.00	0.00	1771204.50	14566029.96	40°06'25.0930"N	80°31'56.1208"W	0.00	0.000	0.00
185.00	0.790	242.480	184.99	0.12	-0.51	-0.97	1771203.53	14566029.45	40°06'25.0881"N	80°31'56.1333"W	1.10	242.480	0.50
230.00	0.870	235.770	229.99	0.24	-0.84	-1.53	1771202.97	14566029.12	40°06'25.0848"N	80°31'56.1405"W	1.75	241.170	0.28
322.00	0.930	263.990	321.98	0.20	-1.31	-2.85	1771201.65	14566028.65	40°06'25.0802"N	80°31'56.1575"W	3.14	245.261	0.48
354.00	0.820	270.680	353.98	0.05	-1.34	-3.34	1771201.16	14566028.62	40°06'25.0800"N	80°31'56.1638"W	3.59	248.158	0.47
419.00	0.890	270.760	418.97	-0.31	-1.33	-4.31	1771200.19	14566028.64	40°06'25.0801"N	80°31'56.1763"W	4.51	252.895	0.11
512.00	1.120	267.160	511.95	-0.87	-1.36	-5.94	1771198.57	14566028.60	40°06'25.0799"N	80°31'56.1973"W	6.09	257.090	0.26
602.00	1.680	279.540	601.93	-1.81	-1.19	-8.12	1771196.39	14566028.77	40°06'25.0817"N	80°31'56.2253"W	8.20	261.689	0.70
692.00	3.950	270.400	691.81	-3.62	-0.95	-12.52	1771191.99	14566029.01	40°06'25.0843"N	80°31'56.2819"W	12.55	265.681	2.56
784.00	6.380	267.110	783.43	-6.38	-1.18	-20.79	1771183.72	14566028.78	40°06'25.0824"N	80°31'56.3885"W	20.83	266.749	2.66
874.00	8.330	265.180	872.69	-9.76	-1.98	-32.28	1771172.23	14566027.98	40°06'25.0751"N	80°31'56.5364"W	32.35	266.489	2.18
965.00	10.550	262.040	962.45	-13.50	-3.69	-47.11	1771157.41	14566026.27	40°06'25.0590"N	80°31'56.7272"W	47.25	265.522	2.50
1055.00	11.460	253.410	1050.80	-16.07	-7.38	-63.84	1771140.69	14566022.58	40°06'25.0234"N	80°31'56.9428"W	64.26	263.403	2.09
1146.00	12.000	246.510	1139.90	-16.38	-13.73	-81.18	1771123.36	14566016.23	40°06'24.9615"N	80°31'57.1664"W	82.33	260.396	1.65
1238.00	11.540	238.860	1229.98	-14.37	-22.31	-97.82	1771106.71	14566007.66	40°06'24.8777"N	80°31'57.3812"W	100.34	257.155	1.77
1328.00	8.440	236.580	1318.60	-11.39	-30.60	-111.05	1771093.50	14565999.37	40°06'24.7964"N	80°31'57.5520"W	115.19	254.593	3.47
1418.00	6.650	243.760	1407.82	-9.51	-36.54	-121.23	1771083.31	14565993.43	40°06'24.7382"N	80°31'57.6835"W	126.62	253.225	2.24
1510.00	6.090	255.640	1499.26	-9.60	-40.11	-130.74	1771073.81	14565989.87	40°06'24.7034"N	80°31'57.8061"W	136.75	252.944	1.55
1601.00	6.670	266.090	1589.69	-11.72	-41.67	-140.69	1771063.86	14565988.31	40°06'24.6886"N	80°31'57.9342"W	146.73	253.502	1.42
1691.00	7.460	266.690	1679.01	-15.05	-42.36	-151.74	1771052.82	14565987.61	40°06'24.6823"N	80°31'58.0764"W	157.54	254.402	0.88
1782.00	7.830	260.470	1769.20	-18.09	-43.73	-163.75	1771040.81	14565986.25	40°06'24.6694"N	80°31'58.2311"W	169.49	255.048	1.00
1874.00	7.490	248.120	1860.39	-19.26	-47.00	-175.49	1771029.07	14565982.98	40°06'24.6377"N	80°31'58.3825"W	181.68	255.007	1.82
1964.00	7.080	233.870	1949.67	-17.74	-52.46	-185.42	1771019.15	14565977.52	40°06'24.5843"N	80°31'58.5106"W	192.70	254.203	2.05
2047.00	7.620	225.590	2031.99	-14.23	-59.32	-193.48	1771011.09	14565970.66	40°06'24.5168"N	80°31'58.6148"W	202.37	252.953	1.43
2123.00	8.470	223.190	2107.24	-9.81	-66.93	-200.91	1771003.67	14565963.05	40°06'24.4420"N	80°31'58.7109"W	211.77	251.575	1.20
2168.00	8.610	219.640	2151.74	-6.72	-71.94	-205.33	1770999.25	14565958.05	40°06'24.3927"N	80°31'58.7681"W	217.57	250.691	1.21
2260.00	6.900	255.880	2242.95	-4.02	-78.60	-215.09	1770989.50	14565951.39	40°06'24.3275"N	80°31'58.8942"W	229.00	249.927	5.52
2350.00	8.270	272.400	2332.17	-7.26	-79.65	-226.80	1770977.79	14565950.34	40°06'24.3177"N	80°31'59.0450"W	240.38	250.650	2.85
2441.00	8.490	266.740	2422.20	-11.92	-79.75	-240.04	1770964.55	14565950.24	40°06'24.3174"N	80°31'59.2154"W	252.95	251.621	0.94

Actual Wellpath Report
William Rodgers OHI 6H awp Proj: 20892'
Page 3 of 10



REFERENCE WELLPATH IDENTIFICATION				
Operator	SWN PRODUCTION COMPANY, LLC		Well	William Rodgers OHI 6H
Field	Ohio		API	47069003650000
Facility	William Rodgers OHI Pad		Wellbore	William Rodgers OHI 6H AWB
Slot	6H			

WELLPATH DATA (225 stations)													
MD [ft]	Inclination [°]	Azimuth [°]	TVD [ft]	Vert Sect [ft]	North [ft]	East [ft]	Grid East [US ft]	Grid North [US ft]	Latitude	Longitude	Closure Dist [ft]	Closure Dir [°]	DLS [°/100ft]
2532.00	8.000	263.560	2512.26	-15.58	-80.85	-253.04	1770951.55	14565949.14	40°06'24.3072"N	80°31'59.3828"W	265.64	252.282	0.74
2622.00	7.890	261.050	2601.40	-18.46	-82.51	-265.37	1770939.23	14565947.48	40°06'24.2914"N	80°31'59.5415"W	277.90	252.728	0.40
2713.00	7.300	259.110	2691.60	-20.79	-84.57	-277.22	1770927.39	14565945.42	40°06'24.2717"N	80°31'59.6941"W	289.83	253.034	0.71
2804.00	6.890	257.600	2781.90	-22.64	-86.84	-288.22	1770916.39	14565943.16	40°06'24.2498"N	80°31'59.8360"W	301.02	253.233	0.49
2895.00	7.460	261.900	2872.19	-24.79	-88.84	-299.40	1770905.21	14565941.15	40°06'24.2306"N	80°31'59.9800"W	312.31	253.473	0.86
2988.00	7.930	265.040	2964.35	-27.93	-90.25	-311.77	1770892.85	14565939.75	40°06'24.2174"N	80°32'0.1392"W	324.57	253.856	0.68
3079.00	7.870	260.000	3054.49	-30.87	-91.87	-324.16	1770880.46	14565938.12	40°06'24.2020"N	80°32'0.2988"W	336.93	254.177	0.76
3170.00	7.740	257.320	3144.65	-32.96	-94.30	-336.28	1770868.35	14565935.70	40°06'24.1786"N	80°32'0.4549"W	349.25	254.335	0.42
3262.00	7.280	254.770	3235.86	-34.46	-97.19	-347.94	1770856.69	14565932.81	40°06'24.1506"N	80°32'0.6052"W	361.26	254.394	0.62
3352.00	6.600	251.330	3325.20	-35.26	-100.34	-358.35	1770846.29	14565929.65	40°06'24.1200"N	80°32'0.7393"W	372.13	254.357	0.89
3443.00	6.300	262.490	3415.62	-36.65	-102.67	-368.25	1770836.39	14565927.33	40°06'24.0975"N	80°32'0.8669"W	382.30	254.421	1.41
3535.00	7.500	272.990	3506.96	-40.28	-103.02	-379.25	1770825.39	14565926.98	40°06'24.0947"N	80°32'1.0086"W	393.00	254.803	1.89
3626.00	8.360	273.460	3597.09	-45.45	-102.31	-391.79	1770812.86	14565927.69	40°06'24.1023"N	80°32'1.1698"W	404.93	255.365	0.95
3717.00	7.720	271.040	3687.19	-50.50	-101.80	-404.50	1770800.15	14565928.20	40°06'24.1080"N	80°32'1.3334"W	417.11	255.874	0.80
3807.00	8.280	265.460	3776.32	-54.62	-102.20	-417.01	1770787.65	14565927.80	40°06'24.1047"N	80°32'1.4944"W	429.35	256.229	1.06
3899.00	9.360	258.310	3867.23	-57.73	-104.24	-430.94	1770773.73	14565925.76	40°06'24.0853"N	80°32'1.6738"W	443.37	256.402	1.67
3990.00	9.220	252.770	3957.04	-59.43	-107.90	-445.15	1770759.52	14565922.10	40°06'24.0498"N	80°32'1.8569"W	458.04	256.375	0.99
4080.00	8.050	247.910	4046.02	-59.80	-112.41	-457.87	1770746.80	14565917.60	40°06'24.0060"N	80°32'2.0210"W	471.47	256.207	1.53
4172.00	7.090	243.740	4137.22	-59.17	-117.34	-468.93	1770735.75	14565912.66	40°06'23.9578"N	80°32'2.1637"W	483.39	255.951	1.20
4264.00	6.380	236.830	4228.59	-57.59	-122.65	-478.30	1770726.38	14565907.36	40°06'23.9058"N	80°32'2.2846"W	493.78	255.618	1.17
4354.00	6.480	240.240	4318.02	-55.78	-127.91	-486.90	1770717.79	14565902.10	40°06'23.8543"N	80°32'2.3956"W	503.42	255.281	0.44
4446.00	6.490	244.470	4409.43	-54.59	-132.72	-496.10	1770708.59	14565897.29	40°06'23.8072"N	80°32'2.5143"W	513.55	255.022	0.52
4539.00	7.760	245.580	4501.71	-53.82	-137.59	-506.56	1770698.14	14565892.43	40°06'23.7597"N	80°32'2.6492"W	524.91	254.805	1.37
4630.00	7.380	246.540	4591.92	-53.22	-142.45	-517.51	1770687.18	14565887.56	40°06'23.7121"N	80°32'2.7906"W	536.76	254.610	0.44
4721.00	6.400	246.790	4682.26	-52.78	-146.78	-527.54	1770677.17	14565883.24	40°06'23.6699"N	80°32'2.9198"W	547.57	254.452	1.08
4811.00	6.390	248.240	4771.70	-52.54	-150.61	-536.80	1770667.91	14565879.41	40°06'23.6325"N	80°32'3.0393"W	557.53	254.327	0.18
4902.00	5.810	249.610	4862.18	-52.53	-154.09	-545.82	1770658.89	14565875.93	40°06'23.5986"N	80°32'3.1556"W	567.15	254.235	0.66
4993.00	5.810	258.660	4952.72	-53.37	-156.60	-554.65	1770650.06	14565873.42	40°06'23.5742"N	80°32'3.2695"W	576.34	254.233	1.01
5083.00	7.620	254.850	5042.10	-54.76	-159.06	-564.88	1770639.84	14565870.96	40°06'23.5505"N	80°32'3.4012"W	586.85	254.274	2.07
5174.00	8.640	250.460	5132.18	-55.56	-162.92	-577.14	1770627.58	14565867.10	40°06'23.5129"N	80°32'3.5594"W	599.70	254.236	1.31

Actual Wellpath Report
William Rodgers OHI 6H awp Proj: 20892'
Page 4 of 10



REFERENCE WELLPATH IDENTIFICATION			
Operator	SWN PRODUCTION COMPANY, LLC	Well	William Rodgers OHI 6H
Field	Ohio	API	47069003650000
Facility	William Rodgers OHI Pad	Wellbore	William Rodgers OHI 6H AWB
Slot	6H		

WELLPATH DATA (225 stations)													
MD [ft]	Inclination [°]	Azimuth [°]	TVD [ft]	Vert Sect [ft]	North [ft]	East [ft]	Grid East [US ft]	Grid North [US ft]	Latitude	Longitude	Closure Dist [ft]	Closure Dir [°]	DLS [°/100ft]
5265.00	8.830	250.190	5222.13	-55.90	-167.58	-590.16	1770614.57	14565862.45	40°06'23.4676"N	80°32'3.7271"W	613.49	254.148	0.21
5355.00	8.420	249.590	5311.11	-56.13	-172.21	-602.83	1770601.90	14565857.81	40°06'23.4224"N	80°32'3.8906"W	626.95	254.057	0.47
5446.00	8.610	251.490	5401.11	-56.51	-176.70	-615.54	1770589.20	14565853.33	40°06'23.3788"N	80°32'4.0544"W	640.40	253.983	0.37
5536.00	8.100	248.820	5490.15	-56.81	-181.13	-627.84	1770576.90	14565848.90	40°06'23.3356"N	80°32'4.2130"W	653.44	253.907	0.71
5627.00	8.240	249.050	5580.23	-56.81	-185.78	-639.90	1770564.84	14565844.25	40°06'23.2903"N	80°32'4.3686"W	666.33	253.811	0.16
5717.00	7.730	248.350	5669.35	-56.76	-190.32	-651.55	1770553.20	14565839.72	40°06'23.2461"N	80°32'4.5188"W	678.78	253.717	0.58
5788.00	6.900	246.620	5739.78	-56.55	-193.77	-659.91	1770544.85	14565836.26	40°06'23.2124"N	80°32'4.6265"W	687.77	253.636	1.21
5837.00	7.650	252.030	5788.38	-56.60	-195.95	-665.71	1770539.04	14565834.09	40°06'23.1912"N	80°32'4.7014"W	693.95	253.599	2.07
5932.00	10.460	233.420	5882.21	-54.64	-203.04	-678.66	1770526.10	14565827.00	40°06'23.1218"N	80°32'4.8684"W	708.38	253.344	4.24
6028.00	14.040	205.950	5976.09	-44.36	-218.72	-690.76	1770514.00	14565811.32	40°06'22.9674"N	80°32'5.0253"W	724.56	252.430	7.02
6123.00	17.830	185.100	6067.49	-23.43	-243.60	-697.11	1770507.66	14565786.45	40°06'22.7219"N	80°32'5.1103"W	738.44	250.738	7.17
6218.00	26.400	176.340	6155.44	9.84	-279.24	-697.05	1770507.72	14565750.83	40°06'22.3697"N	80°32'5.1103"W	750.90	248.169	9.64
6314.00	33.570	169.250	6238.57	56.39	-326.69	-690.73	1770514.04	14565703.40	40°06'21.9005"N	80°32'5.0321"W	764.09	244.687	8.32
6409.00	43.240	168.000	6312.93	114.50	-384.46	-679.03	1770525.73	14565645.65	40°06'21.3290"N	80°32'4.8855"W	780.32	240.482	10.21
6504.00	49.810	167.290	6378.25	182.61	-451.76	-664.27	1770540.48	14565578.37	40°06'20.6631"N	80°32'4.7001"W	803.33	235.781	6.94
6599.00	58.410	165.740	6433.90	258.83	-526.52	-646.28	1770558.46	14565503.65	40°06'19.9235"N	80°32'4.4736"W	833.61	230.831	9.15
6695.00	70.020	163.840	6475.59	344.67	-609.76	-623.58	1770581.16	14565420.43	40°06'19.0997"N	80°32'4.1870"W	872.16	225.642	12.22
6790.00	78.630	163.100	6501.23	435.77	-697.36	-597.57	1770607.16	14565332.86	40°06'18.2327"N	80°32'3.8582"W	918.37	220.593	9.09
6885.00	85.560	159.220	6514.29	529.72	-786.34	-567.18	1770637.54	14565243.92	40°06'17.3518"N	80°32'3.4731"W	969.55	215.803	8.34
6981.00	88.580	156.310	6519.20	625.55	-875.06	-530.91	1770673.80	14565155.23	40°06'16.4732"N	80°32'3.0123"W	1023.52	211.245	4.37
7076.00	88.490	157.320	6521.63	720.45	-962.36	-493.52	1770711.17	14565067.97	40°06'15.6086"N	80°32'2.5370"W	1081.52	207.150	1.07
7171.00	88.400	158.360	6524.21	815.40	-1050.31	-457.70	1770746.98	14564980.05	40°06'14.7376"N	80°32'2.0820"W	1145.70	203.546	1.10
7266.00	88.830	158.160	6526.50	910.37	-1138.53	-422.52	1770782.14	14564891.87	40°06'13.8640"N	80°32'1.6352"W	1214.40	200.360	0.50
7362.00	88.890	158.500	6528.41	1006.34	-1227.72	-387.08	1770817.57	14564802.71	40°06'12.9807"N	80°32'1.1851"W	1287.30	197.499	0.36
7457.00	88.800	158.440	6530.33	1101.32	-1316.08	-352.22	1770852.41	14564714.39	40°06'12.1058"N	80°32'0.7425"W	1362.39	194.983	0.11
7552.00	88.860	158.420	6532.27	1196.30	-1404.41	-317.30	1770887.32	14564626.09	40°06'11.2311"N	80°32'0.2991"W	1439.80	192.731	0.07
7647.00	88.710	158.120	6534.28	1291.27	-1492.64	-282.14	1770922.47	14564537.90	40°06'10.3574"N	80°31'59.8526"W	1519.07	190.704	0.35
7743.00	89.110	158.360	6536.11	1387.25	-1581.78	-246.56	1770958.04	14564448.79	40°06'9.4747"N	80°31'59.4007"W	1600.88	188.860	0.49
7838.00	88.980	158.390	6537.69	1482.23	-1670.08	-211.55	1770993.03	14564360.52	40°06'8.6003"N	80°31'58.9562"W	1683.42	187.219	0.14
7933.00	88.830	158.220	6539.51	1577.21	-1758.33	-176.44	1771028.13	14564272.30	40°06'7.7263"N	80°31'58.5103"W	1767.16	185.730	0.24

REFERENCE WELLPATH IDENTIFICATION			
Operator	SWN PRODUCTION COMPANY, LLC	Well	William Rodgers OHI 6H
Field	Ohio	API	47069003650000
Facility	William Rodgers OHI Pad	Wellbore	William Rodgers OHI 6H AWB
Slot	6H		

WELLPATH DATA (225 stations)													
MD [ft]	Inclination [°]	Azimuth [°]	TVD [ft]	Vert Sect [ft]	North [ft]	East [ft]	Grid East [US ft]	Grid North [US ft]	Latitude	Longitude	Closure Dist [ft]	Closure Dir [°]	DLS [°/100ft]
8029.00	88.770	157.230	6541.52	1673.16	-1847.15	-140.06	1771064.50	14564183.52	40°06'6.8467"N	80°31'58.0481"W	1852.45	184.336	1.03
8124.00	89.540	158.350	6542.92	1768.13	-1935.09	-104.15	1771100.39	14564095.61	40°06'5.9759"N	80°31'57.5920"W	1937.89	183.081	1.43
8219.00	88.890	158.050	6544.22	1863.11	-2023.29	-68.88	1771135.65	14564007.45	40°06'5.1025"N	80°31'57.1440"W	2024.46	181.950	0.75
8314.00	88.860	157.950	6546.09	1958.08	-2111.35	-33.30	1771171.22	14563919.42	40°06'4.2303"N	80°31'56.6921"W	2111.61	180.903	0.11
8410.00	88.890	157.930	6547.97	2054.05	-2200.31	2.75	1771207.25	14563830.49	40°06'3.3494"N	80°31'56.2343"W	2200.31	179.928	0.04
8505.00	89.260	157.630	6549.51	2149.02	-2288.24	38.67	1771243.16	14563742.59	40°06'2.4786"N	80°31'55.7780"W	2288.57	179.032	0.50
8600.00	89.380	158.380	6550.63	2244.00	-2376.32	74.25	1771278.72	14563654.55	40°06'1.6064"N	80°31'55.3261"W	2377.48	178.210	0.80
8696.00	88.580	158.330	6552.34	2339.98	-2465.54	109.66	1771314.11	14563565.37	40°06'0.7229"N	80°31'54.8766"W	2467.97	177.453	0.83
8791.00	89.910	158.260	6553.59	2434.96	-2553.79	144.78	1771349.23	14563477.15	40°05'59.8489"N	80°31'54.4305"W	2557.89	176.755	1.40
8886.00	88.430	158.760	6554.97	2529.95	-2642.17	179.58	1771384.01	14563388.80	40°05'58.9737"N	80°31'53.9887"W	2648.27	176.112	1.64
8982.00	89.480	159.160	6556.72	2625.93	-2731.76	214.04	1771418.46	14563299.25	40°05'58.0866"N	80°31'53.5513"W	2740.13	175.520	1.17
9077.00	89.050	158.770	6557.94	2720.92	-2820.42	248.14	1771452.54	14563210.62	40°05'57.2087"N	80°31'53.1186"W	2831.31	174.972	0.61
9172.00	88.890	158.930	6559.65	2815.91	-2909.01	282.41	1771486.80	14563122.07	40°05'56.3315"N	80°31'52.6836"W	2922.68	174.455	0.24
9268.00	89.420	158.950	6561.06	2911.90	-2998.58	316.90	1771521.28	14563032.52	40°05'55.4445"N	80°31'52.2458"W	3015.28	173.967	0.55
9363.00	89.080	158.620	6562.31	3006.89	-3087.14	351.28	1771555.64	14562944.00	40°05'54.5676"N	80°31'51.8095"W	3107.06	173.508	0.50
9458.00	89.510	159.720	6563.47	3101.88	-3175.92	385.06	1771589.41	14562855.26	40°05'53.6885"N	80°31'51.3808"W	3199.18	173.087	1.24
9554.00	89.230	159.370	6564.53	3197.87	-3265.86	418.60	1771622.94	14562765.35	40°05'52.7980"N	80°31'50.9552"W	3292.58	172.696	0.47
9649.00	89.050	159.310	6565.96	3292.85	-3354.74	452.12	1771656.44	14562676.50	40°05'51.9179"N	80°31'50.5300"W	3385.07	172.325	0.20
9744.00	89.140	159.010	6567.46	3387.84	-3443.51	485.91	1771690.22	14562587.76	40°05'51.0389"N	80°31'50.1012"W	3477.63	171.968	0.33
9840.00	89.690	159.370	6568.44	3483.83	-3533.25	520.01	1771724.32	14562498.06	40°05'50.1504"N	80°31'49.6685"W	3571.31	171.627	0.68
9935.00	89.320	159.010	6569.26	3578.83	-3622.05	553.76	1771758.05	14562409.30	40°05'49.2711"N	80°31'49.2402"W	3664.13	171.308	0.54
10030.00	89.350	158.920	6570.36	3673.82	-3710.71	587.86	1771792.14	14562320.67	40°05'48.3931"N	80°31'48.8075"W	3756.99	170.998	0.10
10221.00	89.660	159.370	6572.01	3864.81	-3889.19	655.85	1771860.10	14562142.26	40°05'46.6259"N	80°31'47.9447"W	3944.10	170.428	0.29
10316.00	89.450	159.430	6572.75	3959.81	-3978.11	689.28	1771893.51	14562053.37	40°05'45.7454"N	80°31'47.5207"W	4037.38	170.170	0.23
10411.00	89.750	159.960	6573.41	4054.79	-4067.21	722.24	1771926.47	14561964.31	40°05'44.8632"N	80°31'47.1025"W	4130.83	169.931	0.64
10507.00	89.380	159.300	6574.14	4150.78	-4157.20	755.66	1771959.87	14561874.35	40°05'43.9722"N	80°31'46.6787"W	4225.32	169.698	0.79
10602.00	89.020	158.380	6575.47	4245.77	-4245.78	789.95	1771994.15	14561785.80	40°05'43.0950"N	80°31'46.2435"W	4318.64	169.460	1.04
10697.00	89.290	158.760	6576.87	4340.76	-4334.21	824.65	1772028.84	14561697.41	40°05'42.2194"N	80°31'45.8030"W	4411.96	169.227	0.49
10793.00	89.600	158.730	6577.80	4436.76	-4423.67	859.45	1772063.62	14561607.98	40°05'41.3334"N	80°31'45.3613"W	4506.39	169.005	0.32
10888.00	89.690	159.360	6578.39	4531.75	-4512.39	893.43	1772097.59	14561519.30	40°05'40.4550"N	80°31'44.9302"W	4599.98	168.801	0.67

Actual Wellpath Report
William Rodgers OHI 6H awp Proj: 20892'
Page 6 of 10



REFERENCE WELLPATH IDENTIFICATION			
Operator	SWN PRODUCTION COMPANY, LLC	Well	William Rodgers OHI 6H
Field	Ohio	API	47069003650000
Facility	William Rodgers OHI Pad	Wellbore	William Rodgers OHI 6H AWB
Slot	6H		

WELLPATH DATA (225 stations)													
MD [ft]	Inclination [°]	Azimuth [°]	TVD [ft]	Vert Sect [ft]	North [ft]	East [ft]	Grid East [US ft]	Grid North [US ft]	Latitude	Longitude	Closure Dist [ft]	Closure Dir [°]	DLS [°/100ft]
10983.00	90.120	158.270	6578.54	4626.75	-4600.96	927.76	1772131.90	14561430.76	40°05'39.5779"N	80°31'44.4945"W	4693.57	168.600	1.23
11078.00	88.800	158.120	6579.44	4721.74	-4689.16	963.04	1772167.18	14561342.59	40°05'38.7044"N	80°31'44.0465"W	4787.03	168.394	1.40
11174.00	90.150	159.600	6580.32	4817.73	-4778.69	997.66	1772201.78	14561253.10	40°05'37.8179"N	80°31'43.6071"W	4881.72	168.208	2.09
11269.00	89.450	158.950	6580.65	4912.72	-4867.54	1031.28	1772235.39	14561164.28	40°05'36.9381"N	80°31'43.1806"W	4975.59	168.038	1.01
11365.00	89.080	158.690	6581.88	5008.72	-4957.05	1065.96	1772270.05	14561074.81	40°05'36.0518"N	80°31'42.7404"W	5070.37	167.864	0.47
11460.00	89.260	158.980	6583.26	5103.71	-5045.63	1100.26	1772304.34	14560986.26	40°05'35.1746"N	80°31'42.3052"W	5164.20	167.699	0.36
11555.00	89.380	159.190	6584.39	5198.70	-5134.37	1134.17	1772338.24	14560897.56	40°05'34.2960"N	80°31'41.8749"W	5258.14	167.544	0.25
11651.00	89.230	159.020	6585.55	5294.69	-5224.05	1168.41	1772372.46	14560807.91	40°05'33.4079"N	80°31'41.4405"W	5353.12	167.393	0.24
11746.00	89.540	159.680	6586.57	5389.68	-5312.94	1201.91	1772405.95	14560719.05	40°05'32.5278"N	80°31'41.0155"W	5447.19	167.253	0.77
11841.00	89.320	159.240	6587.51	5484.67	-5401.89	1235.24	1772439.26	14560630.13	40°05'31.6470"N	80°31'40.5928"W	5541.32	167.120	0.52
11937.00	89.450	158.900	6588.55	5580.67	-5491.55	1269.53	1772473.54	14560540.51	40°05'30.7591"N	80°31'40.1577"W	5636.39	166.983	0.38
12032.00	89.350	159.150	6589.54	5675.66	-5580.25	1303.53	1772507.53	14560451.84	40°05'29.8808"N	80°31'39.7262"W	5730.48	166.852	0.28
12128.00	89.450	159.260	6590.55	5771.66	-5670.00	1337.61	1772541.60	14560362.13	40°05'28.9922"N	80°31'39.2938"W	5825.64	166.726	0.15
12223.00	89.050	157.800	6591.79	5866.64	-5758.39	1372.38	1772576.36	14560273.77	40°05'28.1168"N	80°31'38.8525"W	5919.67	166.595	1.59
12319.00	89.850	159.920	6592.71	5962.63	-5847.92	1407.00	1772610.96	14560184.27	40°05'27.2303"N	80°31'38.4132"W	6014.80	166.472	2.36
12415.00	88.920	158.150	6593.74	6058.62	-5937.56	1441.34	1772645.29	14560094.67	40°05'26.3427"N	80°31'37.9775"W	6110.00	166.355	2.08
12510.00	89.880	158.910	6594.74	6153.61	-6025.96	1476.11	1772680.05	14560006.31	40°05'25.4673"N	80°31'37.5362"W	6204.12	166.236	1.29
12606.00	89.690	159.520	6595.10	6249.61	-6115.71	1510.18	1772714.10	14559916.59	40°05'24.5786"N	80°31'37.1040"W	6299.41	166.129	0.67
12702.00	89.170	158.830	6596.05	6345.60	-6205.43	1544.31	1772748.22	14559826.90	40°05'23.6901"N	80°31'36.6710"W	6394.71	166.025	0.90
12799.00	89.230	158.660	6597.41	6442.59	-6295.83	1579.47	1772783.36	14559736.54	40°05'22.7950"N	80°31'36.2248"W	6490.93	165.917	0.19
12894.00	89.480	159.280	6598.47	6537.59	-6384.49	1613.56	1772817.44	14559647.91	40°05'21.9170"N	80°31'35.7923"W	6585.23	165.817	0.70
12989.00	89.380	159.260	6599.42	6632.58	-6473.34	1647.18	1772851.05	14559559.10	40°05'21.0373"N	80°31'35.3658"W	6679.62	165.724	0.11
13084.00	89.660	159.040	6600.22	6727.58	-6562.11	1680.99	1772884.85	14559470.36	40°05'20.1582"N	80°31'34.9368"W	6774.00	165.632	0.37
13180.00	89.050	159.370	6601.30	6823.57	-6651.85	1715.07	1772918.92	14559380.65	40°05'19.2696"N	80°31'34.5045"W	6869.40	165.542	0.72
13275.00	89.540	157.790	6602.47	6918.56	-6740.28	1749.76	1772953.59	14559292.26	40°05'18.3939"N	80°31'34.0642"W	6963.70	165.447	1.74
13371.00	89.600	159.760	6603.19	7014.55	-6829.76	1784.52	1772988.33	14559202.81	40°05'17.5079"N	80°31'33.6232"W	7059.05	165.357	2.05
13466.00	89.420	158.470	6604.00	7109.54	-6918.52	1818.38	1773022.18	14559114.09	40°05'16.6290"N	80°31'33.1936"W	7153.49	165.274	1.37
13561.00	89.600	159.100	6604.81	7204.54	-7007.07	1852.76	1773056.55	14559025.57	40°05'15.7521"N	80°31'32.7574"W	7247.88	165.189	0.69
13656.00	89.540	159.040	6605.52	7299.53	-7095.80	1886.69	1773090.47	14558936.87	40°05'14.8735"N	80°31'32.3269"W	7342.34	165.110	0.09
13752.00	89.420	158.970	6606.39	7395.53	-7185.43	1921.09	1773124.85	14558847.28	40°05'13.9860"N	80°31'31.8905"W	7437.80	165.032	0.14



Office Of Oil and Gas
 SEP 05 2024
 WV Department of Environmental Protection

Actual Wellpath Report

William Rodgers OHI 6H awp Proj: 20892'
 Page 7 of 10

RECEIVED
 Office Of Oil and Gas
 SEP 05 2024
 WV Department of Environmental Protection



REFERENCE WELLPATH IDENTIFICATION				
Operator	SWN PRODUCTION COMPANY, LLC		Well	William Rodgers OHI 6H
Field	Ohio		API	47069003650000
Facility	William Rodgers OHI Pad		Wellbore	William Rodgers OHI 6H AWB
Slot	6H			

WELLPATH DATA (225 stations)													
MD [ft]	Inclination [°]	Azimuth [°]	TVD [ft]	Vert Sect [ft]	North [ft]	East [ft]	Grid East [US ft]	Grid North [US ft]	Latitude	Longitude	Closure Dist [ft]	Closure Dir [°]	DLS [°/100ft]
13847.00	89.540	159.260	6607.26	7490.53	-7274.18	1954.95	1773158.70	14558758.56	40°05'13.1071"N	80°31'31.4609"W	7532.30	164.957	0.33
13942.00	89.540	158.620	6608.02	7585.52	-7362.83	1989.09	1773192.83	14558669.94	40°05'12.2293"N	80°31'31.0278"W	7626.78	164.882	0.67
14037.00	88.800	159.330	6609.40	7680.51	-7451.50	2023.17	1773226.89	14558581.31	40°05'11.3513"N	80°31'30.5954"W	7721.27	164.810	1.08
14133.00	89.600	157.880	6610.74	7776.50	-7540.87	2058.18	1773261.90	14558491.97	40°05'10.4663"N	80°31'30.1510"W	7816.70	164.734	1.72
14228.00	89.660	159.300	6611.35	7871.49	-7629.31	2092.86	1773296.56	14558403.57	40°05'9.5905"N	80°31'29.7110"W	7911.16	164.660	1.50
14323.00	89.320	158.780	6612.20	7966.49	-7718.02	2126.84	1773330.53	14558314.89	40°05'8.7120"N	80°31'29.2799"W	8005.70	164.593	0.65
14419.00	89.420	158.720	6613.25	8062.48	-7807.49	2161.63	1773365.31	14558225.46	40°05'7.8261"N	80°31'28.8384"W	8101.20	164.524	0.12
14514.00	89.110	159.500	6614.47	8157.47	-7896.23	2195.51	1773399.17	14558136.75	40°05'6.9473"N	80°31'28.4087"W	8195.78	164.462	0.88
14609.00	89.420	158.580	6615.69	8252.46	-7984.94	2229.49	1773433.13	14558048.07	40°05'6.0689"N	80°31'27.9777"W	8290.35	164.400	1.02
14705.00	89.380	158.580	6616.69	8348.45	-8074.30	2264.54	1773468.18	14557958.74	40°05'5.1840"N	80°31'27.5328"W	8385.85	164.333	0.04
14800.00	89.260	158.840	6617.82	8443.45	-8162.81	2299.03	1773502.65	14557870.27	40°05'4.3075"N	80°31'27.0951"W	8480.39	164.270	0.30
14895.00	89.290	158.660	6619.02	8538.44	-8251.35	2333.46	1773537.07	14557781.77	40°05'3.4308"N	80°31'26.6583"W	8574.95	164.209	0.19
14990.00	89.350	158.650	6620.15	8633.43	-8339.82	2368.04	1773571.63	14557693.32	40°05'2.5546"N	80°31'26.2195"W	8669.50	164.148	0.06
15085.00	89.380	158.830	6621.20	8728.43	-8428.35	2402.48	1773606.06	14557604.83	40°05'1.6779"N	80°31'25.7825"W	8764.08	164.090	0.19
15181.00	89.450	158.630	6622.18	8824.42	-8517.81	2437.31	1773640.87	14557515.41	40°05'0.7921"N	80°31'25.3407"W	8859.66	164.032	0.22
15276.00	89.570	159.140	6623.00	8919.42	-8606.43	2471.53	1773675.08	14557426.82	40°04'59.9145"N	80°31'24.9065"W	8954.28	163.977	0.55
15371.00	89.320	158.680	6623.92	9014.41	-8695.06	2505.71	1773709.25	14557338.23	40°04'59.0369"N	80°31'24.4728"W	9048.90	163.924	0.55
15466.00	89.170	158.730	6625.17	9109.40	-8783.57	2540.21	1773743.74	14557249.75	40°04'58.1604"N	80°31'24.0351"W	9143.51	163.870	0.17
15561.00	89.510	158.850	6626.26	9204.40	-8872.12	2574.58	1773778.09	14557161.23	40°04'57.2835"N	80°31'23.5991"W	9238.13	163.818	0.38
15657.00	89.420	158.520	6627.16	9300.39	-8961.55	2609.47	1773812.97	14557071.83	40°04'56.3979"N	80°31'23.1563"W	9333.74	163.765	0.36
15752.00	89.380	158.450	6628.15	9395.38	-9049.93	2644.31	1773847.80	14556983.49	40°04'55.5227"N	80°31'22.7142"W	9428.34	163.712	0.08
15848.00	89.540	158.720	6629.06	9491.38	-9139.30	2679.36	1773882.83	14556894.16	40°04'54.6377"N	80°31'22.2695"W	9523.96	163.660	0.33
15943.00	89.320	158.400	6630.00	9586.37	-9227.72	2714.08	1773917.54	14556805.77	40°04'53.7621"N	80°31'21.8289"W	9618.58	163.610	0.41
16038.00	89.600	158.540	6630.90	9681.36	-9316.09	2748.94	1773952.39	14556717.44	40°04'52.8870"N	80°31'21.3865"W	9713.20	163.560	0.33
16134.00	89.450	158.690	6631.69	9777.36	-9405.47	2783.95	1773987.38	14556628.08	40°04'52.0018"N	80°31'20.9423"W	9808.84	163.512	0.22
16229.00	89.350	158.620	6632.69	9872.35	-9493.95	2818.52	1774021.95	14556539.64	40°04'51.1256"N	80°31'20.5036"W	9903.50	163.465	0.13
16324.00	89.110	158.490	6633.97	9967.34	-9582.37	2853.25	1774056.66	14556451.26	40°04'50.2500"N	80°31'20.0630"W	9998.14	163.419	0.29
16420.00	89.380	158.660	6635.23	10063.33	-9671.73	2888.32	1774091.71	14556361.93	40°04'49.3651"N	80°31'19.6181"W	10093.79	163.373	0.33
16515.00	89.260	158.150	6636.36	10158.32	-9760.05	2923.28	1774126.66	14556273.64	40°04'48.4905"N	80°31'19.1744"W	10188.43	163.326	0.55
16610.00	89.260	158.610	6637.59	10253.31	-9848.36	2958.28	1774161.65	14556185.37	40°04'47.6159"N	80°31'18.7302"W	10283.07	163.281	0.48



Actual Wellpath Report

William Rodgers OHI 6H awp Proj: 20892'
Page 8 of 10

RECEIVED
Office Of Oil and Gas
SEP 05 2024
WV Department of
Environmental Protection



REFERENCE WELLPATH IDENTIFICATION				
Operator	SWN PRODUCTION COMPANY, LLC		Well	William Rodgers OHI 6H
Field	Ohio		API	47069003650000
Facility	William Rodgers OHI Pad		Wellbore	William Rodgers OHI 6H AWB
Slot	6H			

WELLPATH DATA (225 stations)													
MD [ft]	Inclination [°]	Azimuth [°]	TVD [ft]	Vert Sect [ft]	North [ft]	East [ft]	Grid East [US ft]	Grid North [US ft]	Latitude	Longitude	Closure Dist [ft]	Closure Dir [°]	DLS [°/100ft]
16801.00	89.380	158.450	6639.85	10444.29	-10026.09	3028.18	1774231.53	14556007.70	40°04'45.8558"N	80°31'17.8433"W	10473.42	163.194	0.10
16896.00	89.420	159.600	6640.85	10539.28	-10114.79	3062.19	1774265.52	14555919.04	40°04'44.9775"N	80°31'17.4120"W	10568.16	163.157	1.21
16991.00	89.380	159.620	6641.84	10634.27	-10203.84	3095.28	1774298.60	14555830.03	40°04'44.0958"N	80°31'16.9924"W	10662.98	163.125	0.05
17086.00	89.290	160.020	6642.94	10729.25	-10293.00	3128.05	1774331.36	14555740.90	40°04'43.2130"N	80°31'16.5770"W	10757.81	163.096	0.43
17181.00	89.320	160.100	6644.10	10824.23	-10382.30	3160.45	1774363.74	14555651.63	40°04'42.3288"N	80°31'16.1664"W	10852.67	163.069	0.09
17277.00	89.290	159.810	6645.26	10920.20	-10472.47	3193.35	1774396.63	14555561.49	40°04'41.4359"N	80°31'15.7494"W	10948.53	163.042	0.30
17372.00	89.170	159.580	6646.54	11015.19	-10561.56	3226.32	1774429.58	14555472.44	40°04'40.5538"N	80°31'15.3315"W	11043.36	163.013	0.27
17467.00	89.140	159.530	6647.94	11110.17	-10650.57	3259.50	1774462.75	14555383.47	40°04'39.6725"N	80°31'14.9108"W	11138.17	162.984	0.06
17562.00	89.630	159.790	6648.96	11205.16	-10739.64	3292.52	1774495.76	14555294.43	40°04'38.7905"N	80°31'14.4922"W	11233.01	162.956	0.58
17657.00	88.980	159.550	6650.11	11300.14	-10828.71	3325.52	1774528.75	14555205.39	40°04'37.9085"N	80°31'14.0739"W	11327.85	162.928	0.73
17753.00	88.340	159.310	6652.36	11396.11	-10918.57	3359.24	1774562.45	14555115.57	40°04'37.0188"N	80°31'13.6463"W	11423.64	162.899	0.71
17848.00	88.920	159.670	6654.63	11491.08	-11007.52	3392.51	1774595.72	14555026.65	40°04'36.1380"N	80°31'13.2244"W	11518.45	162.871	0.72
17943.00	88.800	160.250	6656.52	11586.04	-11096.75	3425.06	1774628.25	14554937.45	40°04'35.2545"N	80°31'12.8119"W	11613.31	162.847	0.62
18039.00	89.050	163.210	6658.32	11681.90	-11187.88	3455.15	1774658.33	14554846.35	40°04'34.3523"N	80°31'12.4312"W	11709.26	162.838	3.09
18135.00	89.200	164.740	6659.79	11777.51	-11280.14	3481.65	1774684.81	14554754.13	40°04'33.4392"N	80°31'12.0968"W	11805.23	162.847	1.60
18230.00	89.350	165.090	6660.99	11871.98	-11371.86	3506.37	1774709.53	14554662.45	40°04'32.5315"N	80°31'11.7851"W	11900.16	162.864	0.40
18326.00	89.290	165.090	6662.13	11967.42	-11464.62	3531.07	1774734.22	14554569.72	40°04'31.6135"N	80°31'11.4738"W	11996.08	162.881	0.06
18422.00	89.110	164.820	6663.47	12062.88	-11557.32	3555.98	1774759.12	14554477.06	40°04'30.6961"N	80°31'11.1597"W	12092.01	162.898	0.34
18517.00	89.110	162.490	6664.94	12157.54	-11648.46	3582.71	1774785.84	14554385.95	40°04'29.7940"N	80°31'10.8222"W	12186.98	162.904	2.45
18612.00	88.890	160.480	6666.60	12252.42	-11738.53	3612.88	1774815.99	14554295.92	40°04'28.9024"N	80°31'10.4405"W	12281.94	162.893	2.13
18708.00	88.890	160.390	6668.46	12348.37	-11828.97	3645.02	1774848.12	14554205.51	40°04'28.0069"N	80°31'10.0333"W	12377.83	162.874	0.09
18803.00	89.110	159.880	6670.12	12443.34	-11918.30	3677.29	1774880.39	14554116.22	40°04'27.1224"N	80°31'9.6244"W	12472.71	162.853	0.58
18899.00	89.050	158.580	6671.66	12539.32	-12008.05	3711.33	1774914.41	14554026.50	40°04'26.2337"N	80°31'9.1927"W	12568.50	162.825	1.36
18994.00	88.890	157.540	6673.37	12634.29	-12096.15	3746.82	1774949.89	14553938.43	40°04'25.3612"N	80°31'8.7424"W	12663.16	162.789	1.11
19090.00	89.230	156.650	6674.94	12730.23	-12184.57	3784.18	1774987.23	14553850.05	40°04'24.4854"N	80°31'8.2680"W	12758.68	162.747	0.99
19185.00	88.550	156.510	6676.78	12825.13	-12271.73	3821.93	1775024.97	14553762.92	40°04'23.6221"N	80°31'7.7884"W	12853.11	162.701	0.73
19280.00	89.480	156.880	6678.42	12920.05	-12358.96	3859.51	1775062.53	14553675.72	40°04'22.7580"N	80°31'7.3111"W	12947.58	162.657	1.05
19375.00	89.420	156.550	6679.33	13014.97	-12446.22	3897.06	1775100.07	14553588.50	40°04'21.8937"N	80°31'6.8341"W	13042.07	162.614	0.35
19471.00	90.090	156.770	6679.74	13110.89	-12534.36	3935.10	1775138.09	14553500.39	40°04'21.0207"N	80°31'6.3510"W	13137.55	162.571	0.73
19567.00	90.030	157.630	6679.64	13206.85	-12622.86	3972.30	1775175.28	14553411.92	40°04'20.1442"N	80°31'5.8787"W	13233.13	162.532	0.90



Actual Wellpath Report

William Rodgers OHI 6H awp Proj: 20892'

RECEIVED
Office Of Oil and Gas

SEP 05 2024

WV Department of
Environmental Protection



REFERENCE WELLPATH IDENTIFICATION			
Operator	SWN PRODUCTION COMPANY, LLC	Well	William Rodgers OHI 6H
Field	Ohio	API	47069003650000
Facility	William Rodgers OHI Pad	Wellbore	William Rodgers OHI 6H AWB
Slot	6H		

WELLPATH DATA (225 stations) † = interpolated, ‡ = extrapolated station													
MD [ft]	Inclination [°]	Azimuth [°]	TVD [ft]	Vert Sect [ft]	North [ft]	East [ft]	Grid East [US ft]	Grid North [US ft]	Latitude	Longitude	Closure Dist [ft]	Closure Dir [°]	DLS [°/100ft]
19662.00	89.880	159.780	6679.71	13301.84	-12711.37	4006.80	1775209.76	14553323.45	40°04'19.2677"N	80°31'5.4411"W	13327.92	162.504	2.27
19757.00	89.290	159.480	6680.40	13396.83	-12800.43	4039.86	1775242.82	14553234.43	40°04'18.3858"N	80°31'5.0219"W	13422.80	162.484	0.70
19853.00	90.060	159.800	6680.95	13492.82	-12890.43	4073.26	1775276.20	14553144.46	40°04'17.4947"N	80°31'4.5986"W	13518.68	162.464	0.87
19948.00	89.660	160.010	6681.18	13587.81	-12979.64	4105.90	1775308.83	14553055.28	40°04'16.6113"N	80°31'4.1850"W	13613.58	162.446	0.48
20043.00	88.030	158.800	6683.09	13682.78	-13068.55	4139.31	1775342.23	14552966.41	40°04'15.7309"N	80°31'3.7615"W	13708.42	162.425	2.14
20139.00	89.660	159.310	6685.03	13778.76	-13158.18	4173.62	1775376.52	14552876.81	40°04'14.8433"N	80°31'3.3264"W	13804.24	162.402	1.78
20235.00	89.940	160.250	6685.36	13874.75	-13248.27	4206.80	1775409.69	14552786.76	40°04'13.9513"N	80°31'2.9059"W	13900.13	162.383	1.02
20330.00	89.230	159.680	6686.05	13969.73	-13337.51	4239.34	1775442.22	14552697.55	40°04'13.0676"N	80°31'2.4935"W	13995.05	162.367	0.96
20425.00	89.200	159.590	6687.35	14064.71	-13426.57	4272.40	1775475.27	14552608.53	40°04'12.1858"N	80°31'2.0745"W	14089.93	162.349	0.10
20521.00	89.600	159.420	6688.36	14160.70	-13516.49	4306.01	1775508.86	14552518.64	40°04'11.2955"N	80°31'1.6485"W	14185.81	162.329	0.45
20616.00	89.570	159.510	6689.05	14255.69	-13605.45	4339.33	1775542.17	14552429.72	40°04'10.4145"N	80°31'1.2261"W	14280.69	162.310	0.10
20711.00	89.450	159.750	6689.86	14350.68	-13694.50	4372.40	1775575.23	14552340.69	40°04'9.5327"N	80°31'0.8070"W	14375.58	162.293	0.28
20807.00	89.570	160.230	6690.68	14446.66	-13784.70	4405.25	1775608.06	14552250.53	40°04'8.6396"N	80°31'0.3908"W	14471.50	162.277	0.52
20867.00	89.540	159.890	6691.14	14506.65	-13841.11	4425.71	1775628.52	14552194.15	40°04'8.0811"N	80°31'0.1315"W	14531.45	162.268	0.57
20892.00‡	89.540	159.890	6691.35	14531.64	-13864.58	4434.31	1775637.11	14552170.68	40°04'7.8487"N	80°31'0.0226"W	14556.43	162.264	0.00

HOLE & CASING SECTIONS - Ref Wellbore: William Rodgers OHI 6H AWB Ref Wellpath: William Rodgers OHI 6H awp Proj: 20892'									
String/Diameter	Start MD [ft]	End MD [ft]	Interval [ft]	Start TVD [ft]	End TVD [ft]	Start N/S [ft]	Start E/W [ft]	End N/S [ft]	End E/W [ft]
13.375in Casing	26.00	406.00	380.00	26.00	405.97	0.00	0.00	-1.33	-4.11
9.625in Casing	26.00	2115.00	2089.00	26.00	2099.33	0.00	0.00	-66.08	-200.11
5.5in Casing	26.00	20892.00	20866.00	26.00	6691.35	0.00	0.00	-13864.58	4434.31



Actual Wellpath Report

William Rodgers OHI 6H awp Proj: 20892

Page 10 of 10

RECEIVED
Office Of Oil and Gas

APR 05 2024

WV Department of
Environmental Protection



REFERENCE WELLPATH IDENTIFICATION			
Operator	SWN PRODUCTION COMPANY, LLC	Well	William Rodgers OHI 6H
Field	Ohio	API	47069003650000
Facility	William Rodgers OHI Pad	Wellbore	William Rodgers OHI 6H AWB
Slot	6H		

TARGETS								
Name	TVD [ft]	North [ft]	East [ft]	Grid East [US ft]	Grid North [US ft]	Latitude	Longitude	Shape
William Rodgers OHI 6H BHL Rev 4	6480.00	-13846.91	4479.58	1775682.37	14552188.35	40°04'8.0209"N	80°30'59.4390"W	point
William Rodgers OHI 6H LP Rev 2	6530.60	-311.81	-737.49	1770467.29	14565718.27	40°06'22.0499"N	80°32'5.6330"W	point
William Rodgers OHI 6H LP Rev 3	6548.66	-311.81	-737.49	1770467.29	14565718.27	40°06'22.0499"N	80°32'5.6330"W	point
William Rodgers OHI 6H BHL Rev 3	6682.36	-13846.91	4479.58	1775682.37	14552188.35	40°04'8.0209"N	80°30'59.4390"W	point

WELLPATH COMPOSITION - Ref Wellbore: William Rodgers OHI 6H AWB Ref Wellpath: William Rodgers OHI 6H awp Proj: 20892'					
Start MD [ft]	End MD [ft]	Positional Uncertainty Model	Log Name/Comment	Wellbore	Survey Date
26.00	354.00	OWSG MWD rev2 + IFR1 + Multi-Station Correction	1 Total MWD 17.5" IFR-MSA 185' - 354'	William Rodgers OHI 6H AWB	4/25/2024
354.00	2047.00	OWSG MWD rev2 + IFR1 + Multi-Station Correction	2 Total MWD 12.25" IFR-MSA 419' - 2047'	William Rodgers OHI 6H AWB	4/25/2024
2047.00	5788.00	OWSG MWD rev2 + IFR1 + Multi-Station Correction	3 Total MWD 8.75" IFR-MSA 2123' - 5788'	William Rodgers OHI 6H AWB	4/25/2024
5788.00	20892.00	OWSG MWD rev2 + IFR1 + Multi-Station Correction	4 BH MWD ATC 8.5" IFR-MSA 5837' - 20867'	William Rodgers OHI 6H AWB	4/25/2024



RECEIVED
Office Of Oil and Gas

SEP 05 2024

WV Department of
Environmental Protection

Well Name: William Rodgers OHI 6H

47069003650000

LITHOLOGY/FORMATION	TOP DEPTH, MD (FT)	TOP DEPTH, TVD (FT)	BOTTOM DEPTH, MD (FT)	BOTTOM DEPTH, TVD (FT)	QUANTITY AND TYPE OF FLUID
Base of Fresh Water	0.00	0.00	309.00	309.00	
Top of Salt Water	1188.00	1182.00	NA	NA	
Pittsburgh Coal	675.00	675.00	680.00	680.00	
Pottsville (ss)	804.00	803.00	937.00	935.00	
Raven Cliff (ss)	1174.00	1168.00	1432.00	1421.00	
Maxton (ss)	1579.00	1568.00	1715.00	1703.00	
Berea (siltstone)	2327.00	2309.00	2423.00	2404.00	
Rhinestreet (shale)	5934.00	5884.00	6240.00	6175.00	
Cashaqua (shale)	6240.00	6175.00	6322.00	6245.00	
Middlesex (shale)	6322.00	6245.00	6415.00	6317.00	
Burket (shale)	6432.00	6328.00	6461.00	6349.00	
Tully (ls)	6461.00	6349.00	6514.00	6384.00	
Mahantango (shale)	6514.00	6384.00	6782.00	6499.00	
Marcellus (shale)	6782.00	6499.00	NA	NA	GAS