

USA LEASE 121 OF 1716.09 ACRES ± WELL NO. 1 47-071-0003

NORTH

00° 03' 62" LONGITUDE
00° 01' 46.0" LAT.

U.S. FOREST SERVICE
TRACT NO. 102
1862 ACRES ±
(T&F EXPLORATION,
L.P. LEASEHOLD)

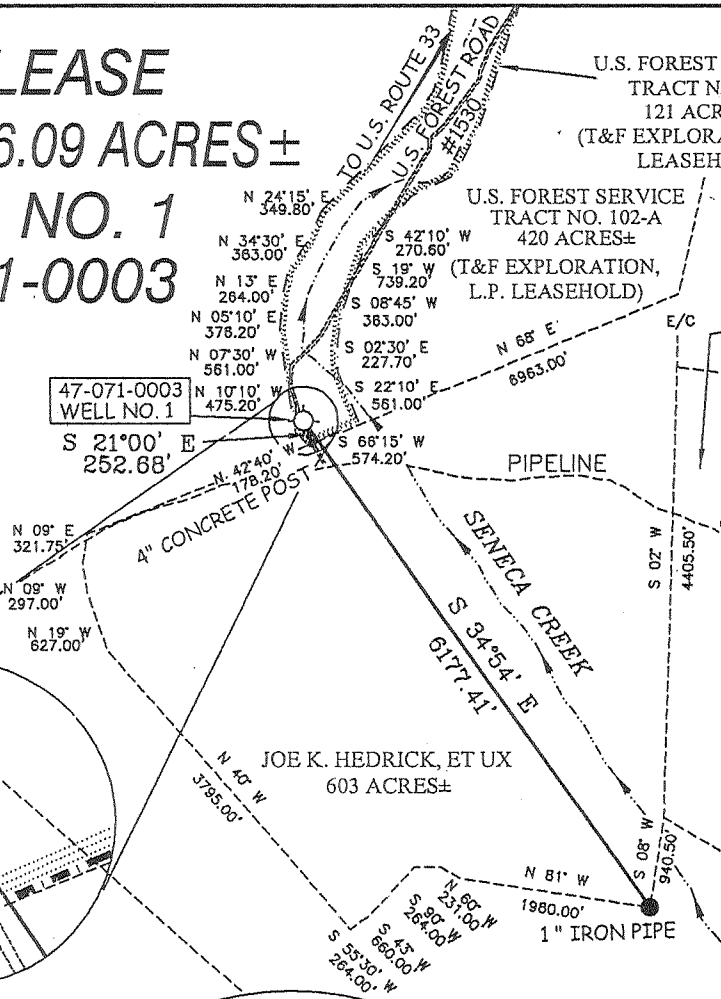
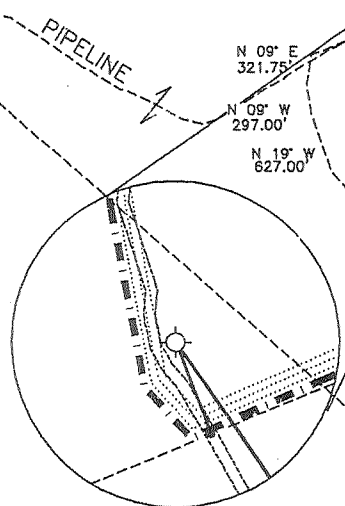
47-071-0003
WELL NO. 1

U.S. FOREST SERVICE
TRACT NO. 870
121 ACRES ±
(T&F EXPLORATION, L.P.
LEASEHOLD)

U.S. FOREST SERVICE
TRACT NO. 911-C
97.18 ACRES ±

U.S. FOREST SERVICE
TRACT NO. 356
114.3 ACRES ±

U.S. FOREST SERVICE
TRACT NO. 102-A
420 ACRES ±
(T&F EXPLORATION,
L.P. LEASEHOLD)



NOTES ON SURVEY

1. TIES TO CORNERS ARE BASED ON GRID NORTH FOR THE WV STATE PLANE COORDINATE SYSTEM SOUTH ZONE NAD'27.
2. LEASE BOUNDARY SHOWN HEREON TAKEN FROM A PLAT DATED THE 31ST DAY OF MARCH, 1952 AS PREPARED BY D. CARPENTER FOR WELL A.P.I. NO. 47-071-0003.
3. SURFACE OWNER AND ADJOINER INFORMATION TAKEN FROM THE ASSESSOR AND COUNTY CLERK RECORDS OF PENDLETON COUNTY IN AUGUST, 2005.
4. WELL LAT./LONG. (NAD'27) ESTABLISHED BY DGPS (SUBMETER MAPPING GRADE).

THERE APPEARS TO BE NO KNOWN PERMITTED WELLS WITHIN 3,000'.

WELL NO. 1
47-041-0003

3000'

U.S. FOREST SERVICE
TRACT NO. 102
1862 ACRES ±
(T&F EXPLORATION,
L.P. LEASEHOLD)

WELL NO. 1
STATE PLANE
COORDINATES
SURFACE LOCATION

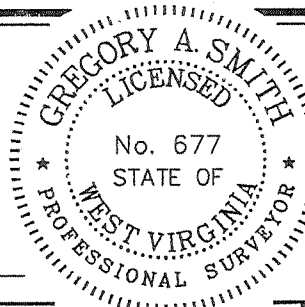
(N) 669,626
(E) 2,426,946



I THE UNDERSIGNED, HEREBY CERTIFY THAT THIS PLAT IS CORRECT TO THE BEST OF MY KNOWLEDGE AND BELIEF AND SHOWS ALL THE INFORMATION REQUIRED BY LAW AND THE REGULATIONS ISSUED AND PRESCRIBED BY THE DIVISION OF ENVIRONMENTAL PROTECTION.

P.S.
677

Gregory A. Smith



(+) DENOTES LOCATION OF WELL ON UNITED STATES TOPOGRAPHIC MAPS.

DATE JUNE 21, 20 06

OPERATORS WELL NO. _____ SITES NO. 1

API WELL NO. 47 - 071 - 0003
STATE COUNTY PERMIT

MINIMUM DEGREE OF ACCURACY 1/200 FILE NO. 6109P1 (194-39)
PROVEN SOURCE OF ELEVATION DGPS (SUBMETER MAPPING GRADE) SCALE 1" = 2000'

STATE OF WEST VIRGINIA
DIVISION OF ENVIRONMENTAL PROTECTION
OFFICE OF OIL AND GAS



WELL TYPE: OIL _____ GAS X LIQUID INJECTION _____ WASTE DISPOSAL _____ IF "GAS" PRODUCTION _____ X STORAGE _____ DEEP _____ X SHALLOW _____

LOCATION: ELEVATION 2,355' WATERSHED SENECA CREEK
DISTRICT UNION COUNTY PENDLETON QUADRANGLE WHITMER 7.5'

SURFACE OWNER UNITED STATES OF AMERICA (U.S.F.S. TRACT NO. 870) ACREAGE 121 ±
ROYALTY OWNER UNITED STATES OF AMERICA (U.S. FOREST SERVICE) LEASE ACREAGE 121 OF 1716.09 ±

PROPOSED WORK: DRILL _____ CONVERT _____ DRILL DEEPER _____ REDRILL _____ FRACTURE GR STIMULATE _____ PLUG OFF OLD FORMATION _____ PERFORATE NEW FORMATION _____ PLUG AND ABANDON X CLEAN OUT AND REPLUG _____ OTHER _____
PHYSICAL CHANGE IN WELL (SPECIFY) _____ TARGET FORMATION SHALE
ESTIMATED DEPTH 5,839'

WELL OPERATOR T&F EXPLORATION, L.P. DESIGNATED AGENT THOMAS DUNN
ADDRESS P.O. BOX 428 BUCKHANNON, WV 26201 ADDRESS P.O. BOX 428 BUCKHANNON, WV 26201

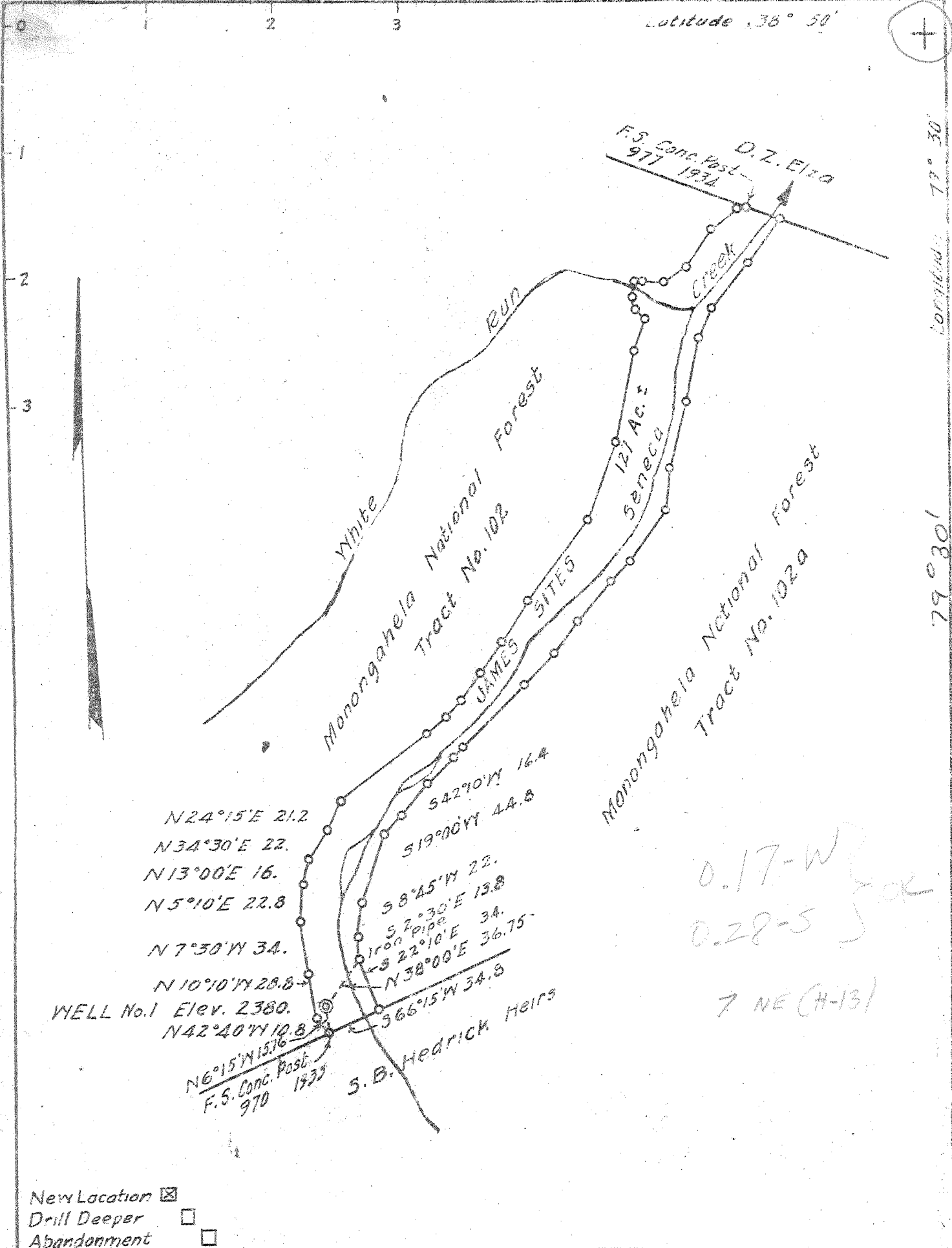
COUNTY NAME PEN
PERMIT 0003 P

AUG 11 2006

Latitude 38° 50'

Longitude 79° 30'

79° 30'



- New Location
- Drill Deeper
- Abandonment

Company BLAHO OIL & GAS CO.
 Address UNIONTOWN, PA.
 Farm JAMES SITES
 Tract Acres 127 Lease No. 1
 Well (Form) No. 1 Serial No. 1
 Elevation (Spirit Level) 2380
 Quadrangle HORTON - SE
 County PENDLETON District UNION
 Engineer D. B. Carpenter
 Engineer's Registration No. 765
 File No. A 33152 Drawing No. _____
 Date 3-31-52 Scale 1"=80 Feet

STATE OF WEST VIRGINIA
 DEPARTMENT OF MINES
 OIL AND GAS DIVISION
 CHARLESTON

WELL LOCATION MAP
 FILE NO. PEND-3

+ Denotes location of well on United States Topographic Maps, scale 1 to 62,500, latitude and longitude lines being represented by border lines as shown.
 - Denotes one inch spaces on border line of original tracing.

1-0 0 Deepwell? Samples 2843



STATE OF WEST VIRGINIA
DEPARTMENT OF MINES
OIL AND GAS DIVISION 7

Quadrangle Onego Horton

Permit No. Per. 3

WELL RECORD

Oil or Gas Well Gas
(KIND)

Company Ben Franklin Oil & Gas Corp.
Address 7 Lenox Terrace, Bloomfield, N.J.
Farm Joe Sites Acres 300
Location (waters) Seneca Creek
Well No. 1 Elev. 2380
District Union ~~Day Fork~~ County Pendleton
The surface of tract is owned in fee by _____
Address _____
Mineral rights are owned by _____
Address _____

| Casing and Tubing | Used in Drilling | Left in Well | Packers |
|-------------------|------------------|--------------|----------------------|
| Size | | | Kind of Packer _____ |
| 16 | | | |
| 18 | | | |
| 10 3/4 | 250 | | Size of _____ |
| 8 5/8 | 833 | | |
| 7 | 224 | Liner | Depth set _____ |
| 5 3/16 | | | |
| 3 | | | Perf. top _____ |
| 2 | | | Perf. bottom _____ |
| Liners Used | | | Perf. top _____ |
| | | | Perf. bottom _____ |

Drilling commenced April, 1952
Drilling completed _____
Date Shot _____ From _____ To _____
With _____
Open Flow /10ths Water in _____ Inch
/10ths Merc. in _____ Inch
Volume _____ Cu. Ft.
Rock Pressure _____ lbs. _____ hrs.
Oil _____ bbls., 1st 24 hrs.
WELL ACIDIZED _____

| CASING CEMENTED | SIZE | No. Ft. | Date |
|-------------------------|------|---------|------|
| | | | |
| COAL WAS ENCOUNTERED AT | | | |
| | FEET | INCHES | |
| | FEET | INCHES | |
| | FEET | INCHES | |

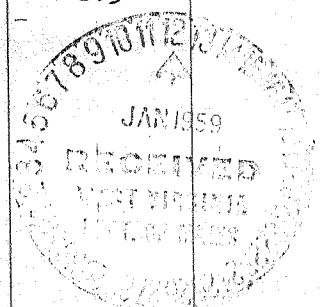
WELL FRACTURED _____

RESULT AFTER TREATMENT _____

ROCK PRESSURE AFTER TREATMENT _____

Fresh Water _____ Feet Salt Water _____ Feet

| Formation | Color | Hard or Soft | Top | Bottom | Oil, Gas or Water | Depth | Remarks |
|----------------|-----------|--------------|------|--------|-------------------------------------|-------|---------|
| River Gravel | | | 0 | 18 | | | |
| Limey Sand | | | 18 | 25 | Gas | 25' | |
| River Gravel | | | 25 | 35 | | | |
| Sandy Lime | | | 35 | 55 | | | |
| Lime Shells | | | 55 | 95 | Water | 85' | |
| Lime | | | 95 | 398 | " | 283' | |
| Slate | | | 398 | 400 | | | |
| Lime | | | 400 | 435 | | | |
| Lime Broken | | | 435 | 455 | | | |
| Slaty Shells | | | 455 | 465 | | | |
| Lime | | | 465 | 502 | | | |
| Slate | | | 502 | 516 | | | |
| Broken Lime | | | 516 | 655 | | | |
| Sand | | | 655 | 700 | Gas | | |
| Lime Broken | | | 700 | 735 | | | |
| Sand | | | 735 | 760 | | | |
| Slate | | | 760 | 800 | | | |
| Sand Lime Hard | | Hard | 800 | 860 | | | |
| Broken Lime | | | 860 | 1100 | | | |
| Lime Shells | | | 1100 | 1560 | | | |
| Lime Shells | Lt, Brown | | 1560 | 1775 | | | |
| Broken Slate | | | 1775 | 1795 | | | |
| Slaty Shells | | | 1795 | 2126 | | | |
| Broken Lime | | | 2126 | 2207 | | | |
| Benson Sand | | | 2207 | 2227 | Show of gas-shot well w/50 qts Glc. | | |
| Lime | | Hard | 2227 | 2255 | no improvement | | |
| Broken Lime | | | 2255 | 2304 | | | |
| Sand | | Hard | 2304 | 2320 | Show of gas 2312' Shot w/50 qts no | | |
| | | | | | improvement | | |



Ran 8-1/4' pipe

| Formation | Color | Hard or Soft | Top 7 | Bottom | Oil, Gas or Water | Depth Found | Remarks |
|-------------------|--------------|--------------|-------|--------|--|-------------|---------|
| Lime | | | 2320 | 2334 | | | |
| Sand | | Hard | 2334 | 2342 | | | |
| Lime Shells | | | 2342 | 2590 | | | |
| Sand Shells | | | 2590 | 2595 | Show of gas | 2593' | |
| Slate Lime Shells | | | 2595 | 3320 | | | |
| Crevis at | | | 3320 | 3332 | Ran 188' 7" Liner | | |
| Shale | Black | | 3332 | 3415 | | | |
| Lime | Black | | 3415 | 3520 | | | |
| Lime & Shells | | | 3520 | 3571 | Show of Gas-3522' - 21,300 Cu.Ft. | | |
| Lime | Black | | 3571 | 3600 | | | |
| Shale-Slate | | | 3600 | 3715 | | | |
| Shale & Shells | | | 3716 | 3880 | | | |
| Lime | | | 3880 | 4459 | | | |
| Shale | Black | | 4459 | 4862 | | | |
| Lime | Grey | Hard | 4862 | 4894 | | | |
| Lime Shale Shells | | | 4894 | 5540 | | | |
| Shale | Black | | 5540 | 5630 | Show of gas 5595' Very small amount | | |
| Brown Break | | | 5630 | 5632 | Tiga Metakentite? | | |
| Lime | Black | | 5632 | 5769 | Show of gas-5645' & 5652' & 5694' | | |
| Lime & Shale | Black & Grey | | 5769 | 5783 | Onondaga ls. | | |
| Shale | Dark Brown | | 5783 | 5825 | Need more shale | | |
| Shale | Black | | 5825 | 5839 | Show of Gas-5874' 27,500 CU.FT. Sustained | | |
| Shale | Dark Grey | | 5839 | | Gas blowout lodged tools in side of approx. 30' off bottom | | |

465

After the blow-out we fished for the tools for about two months and came to the conclusion it was impossible with a cable tool rig. Therefore we hope to place a rotary rig on this well this spring, set a whipstock at about 4300' and finish the well with a new hole from there.

The gas we got at 5874' has sustained and every time we moved the stuck tools it blew strongly. However, it is now completely shut in with a socket and another set of fishing tools plus some cavings on the original tools.

| | | |
|------|------|------|
| 5839 | 5630 | 5632 |
| 1200 | 2380 | 2380 |
| 7039 | 3250 | 3252 |
| 2380 | | |
| 4659 | 5874 | 5874 |
| | | 2380 |
| | | 3494 |

Date _____, 19____

APPROVED _____, Owner

By _____ (Title)

