

LATITUDE 39° 22' 30"



LONGITUDE 81° 15' 00"

7'5 OGIS topo location

7.5' loc 0.04 S  
0.30 W

15' loc \_\_\_\_\_  
(calc.) \_\_\_\_\_

Company \_\_\_\_\_

Farm \_\_\_\_\_

Quad WILLOW ISLAND 7 1/2'

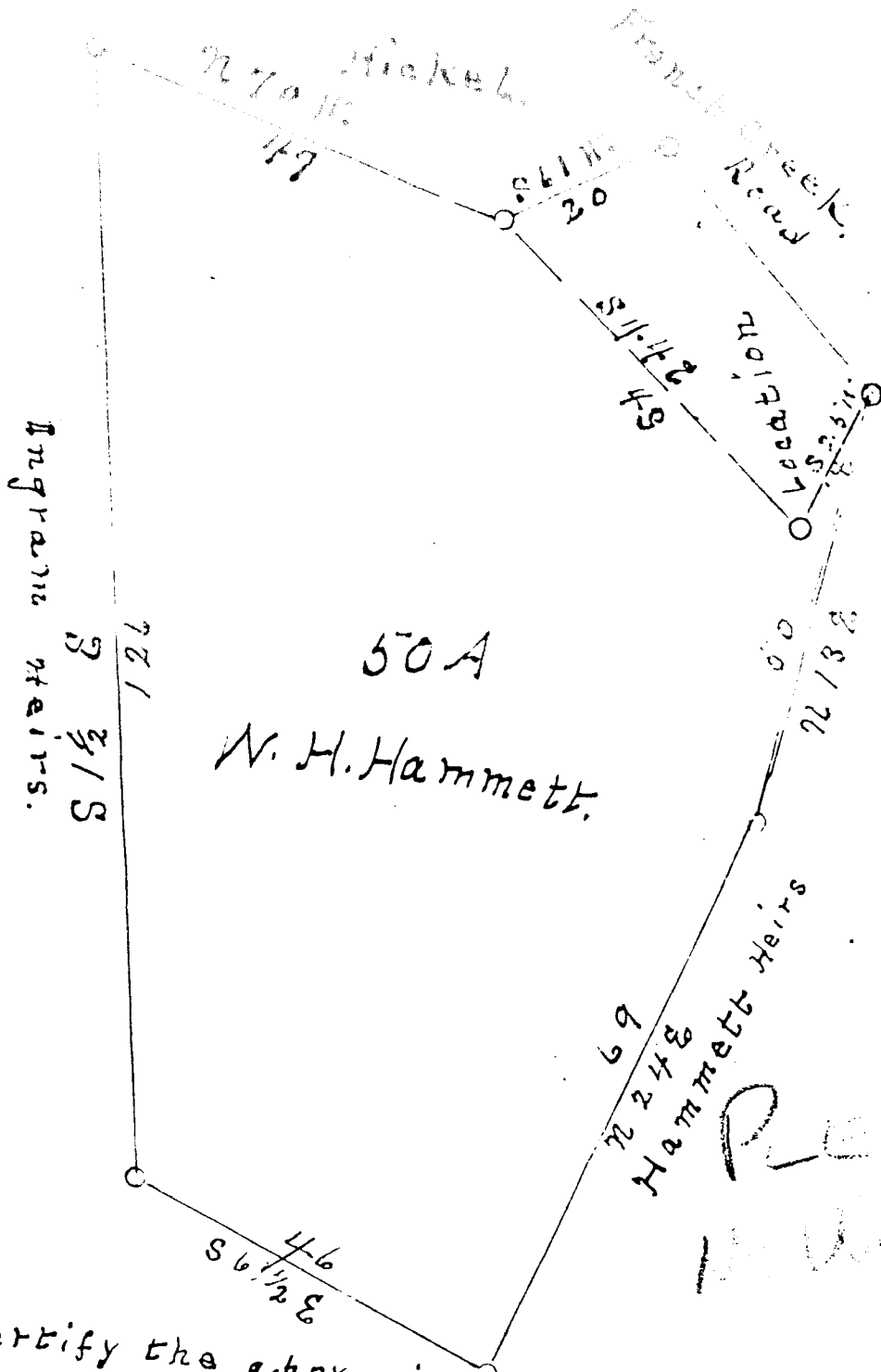
County PLEASANTS

District GRANT

WELL LOCATION MAP

File No. 073-0007

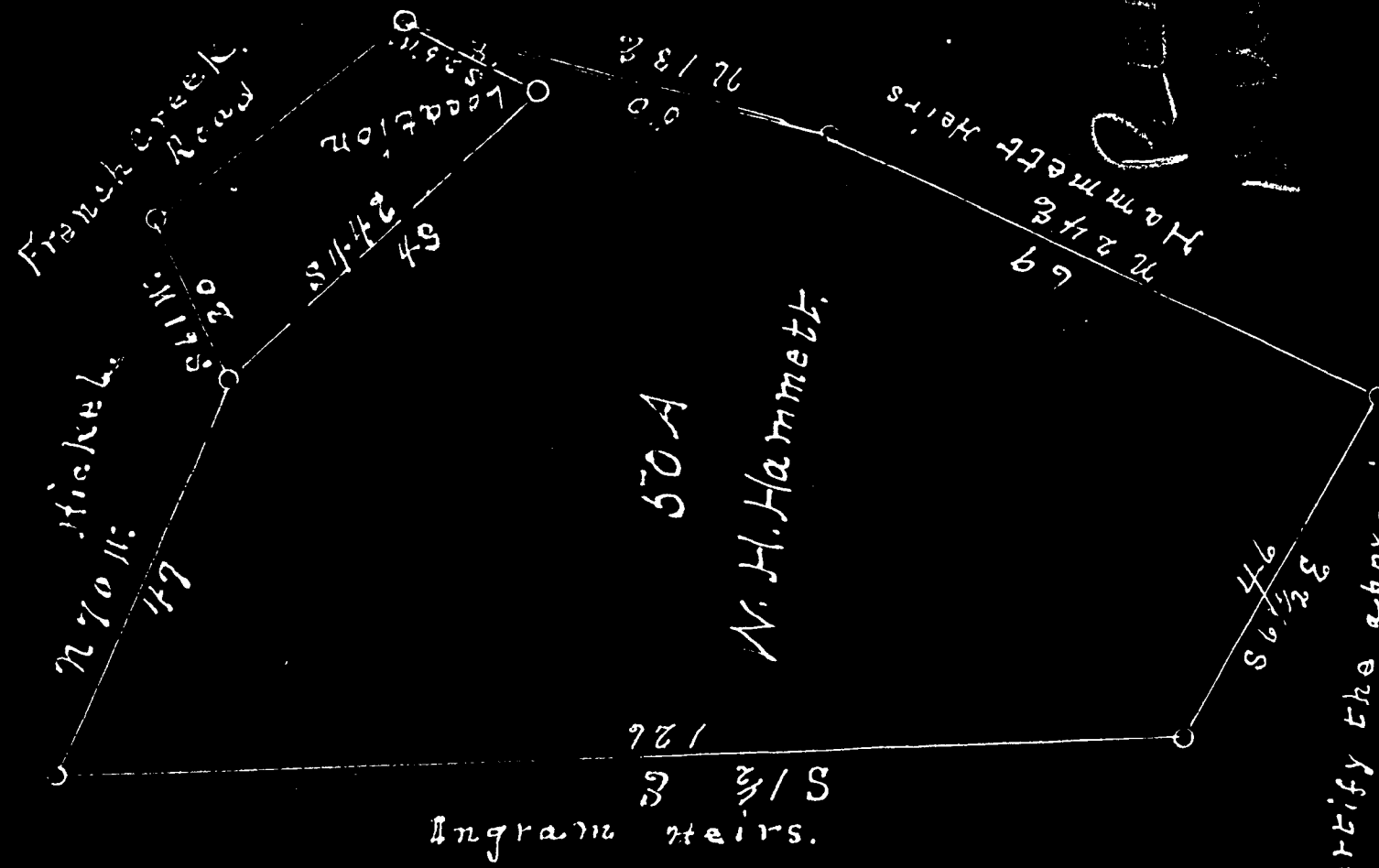
Location plat for W. H. Hammett own land  
 situated Grant Dist. Pleasants Co. W. Va.



I hereby certify the above is a correct plat and location  
 well for W. H. Hammett on his own farm in Grant Dist.  
 Pleasants Co. W. Va.  
 T. J. HICKEL, Eng.  
 Notary Public  
 known and acknowledged before me a Notary Public for  
 Pleasants Co. W. Va. this 5<sup>th</sup> day of July 1932.  
 My commission expires  
 11-1933.

Nowell Record

Location plat for W. H. Hammett own land situated Grant Dist. Pleasants Co. W. Va.



I heroby certify the above is a correct plat and location  
 if well for W. H. Hammett on his own farm in Grant Dist.  
 Pleasants Co. W. Va.  
 Acknowledged before me a Notary Public for T. J. Hicker.  
 Pleasants Co. W. Va. this 5 day of July 1932. *A. O. Hammett*  
 Commission expires  
 July 1933

Notary Public

Howell Record

HAMMETT, W. H., NO. 1.

Pleas-7.

By W. H. Hammett.

Grant Dist.