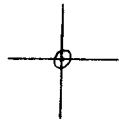


LATITUDE 39° 22' 30"



00.00.15 LONGITUDE

7.5 OGIS topo location

7.5' loc 0.945 15' loc \_\_\_\_\_  
                  1.95W (calc.) \_\_\_\_\_

Company \_\_\_\_\_

Farm \_\_\_\_\_

Quad ELLENBORO 7 1/2'

County PLEASANTS

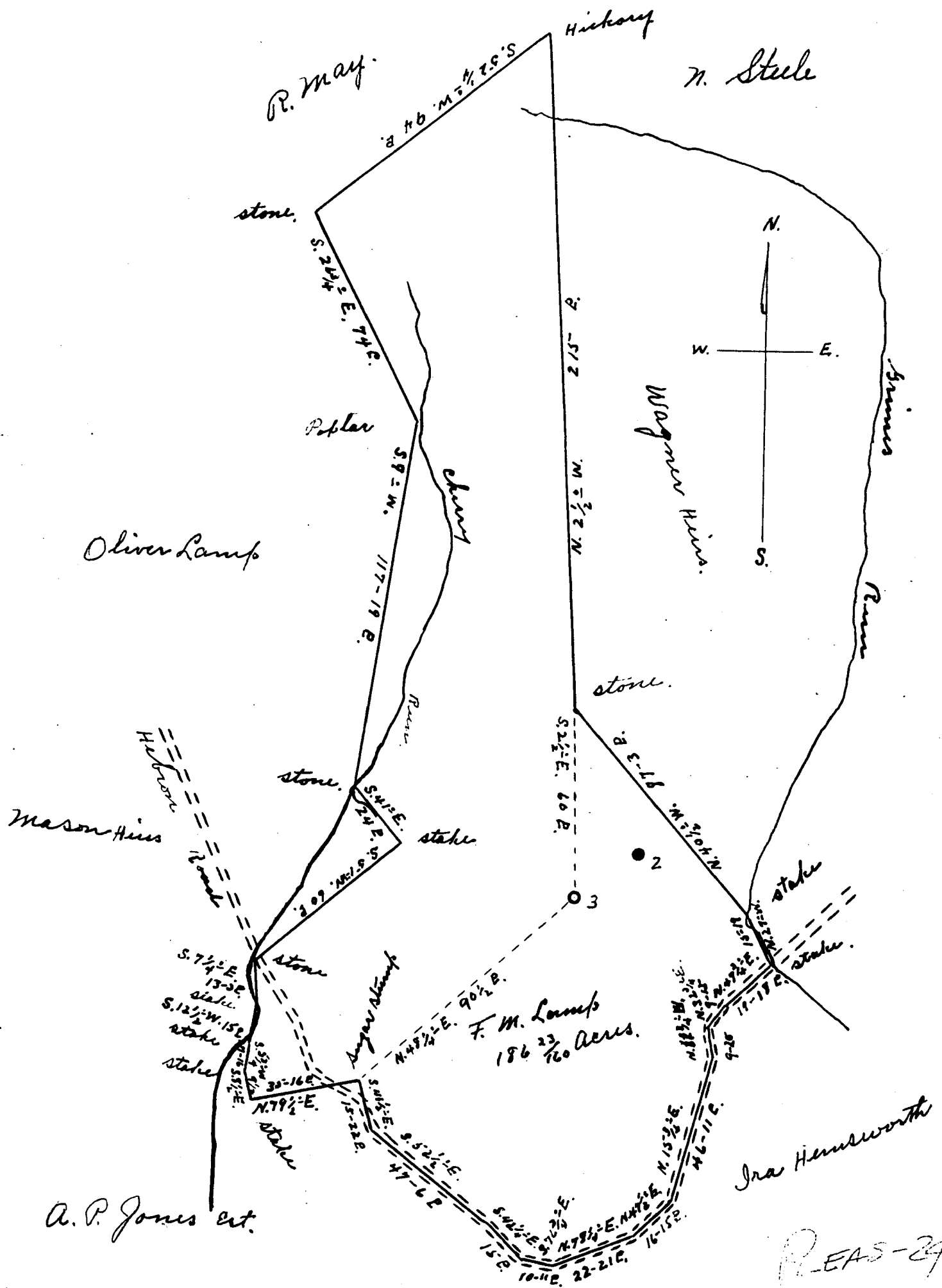
District LAFAYETTE

WELL LOCATION MAP

File No. 073-0024

186 Acs.  
 160 ---  
 W.Va.

to canon of well No. 3 of Albert Muley & Co.  
 a. on The F. M. Lamp farm, consisting of  
 Located in Lafayette district Pleasants Co.



PEAS-24

I, the undersigned, hereby certify that this map is correct and shows all the information to the best of my knowledge and belief, required by the Oil and Gas section of the mining laws of West Virginia.  
 Scale 40 poles to 1"

Jno Triplett, Engineer.

Acknowledged before me a Notary Public for Pleasants Co. W.Va. This 22nd day of September 1934

H. P. Engle, Notary

*Pls. see*

WEST VIRGINIA DEPARTMENT OF MINES

OIL AND GAS DIVISION

PRELIMINARY DATA SHEET NO. 1

File No. 24

Well No. 3

Albert Neely Company of St Mungo  
on the F M Sumpf Farm  
containing \_\_\_\_\_ acres. Location \_\_\_\_\_

District, in Pleasants County, West Virginia

The surface of the above tract is owned in fee by F M Sumpf  
of Hebron address, and the mineral rights are owned by  
F M Sumpf of Hebron W Va

The oil and gas privileges are held under lease by the above named company, and this well is drilled under permit  
No. \_\_\_\_\_ issued by the West Virginia Department of Mines, Oil and Gas Division  
\_\_\_\_\_ 193 \_\_\_\_\_

Elevation of surface at top of well, 900 Spirit Barometric.

The number of feet of the different sized casings used in the well.

16 ft feet 10" size. Wood conductor.  
250 feet 8 1/4 size, csg. \_\_\_\_\_ feet \_\_\_\_\_ sized csg.  
1070 feet 6 1/2 size, csg. \_\_\_\_\_ feet \_\_\_\_\_ sized csg.  
\_\_\_\_\_ feet \_\_\_\_\_ size, csg. \_\_\_\_\_ feet \_\_\_\_\_ sized csg.

\_\_\_\_\_ packer of \_\_\_\_\_ size, set at \_\_\_\_\_

\_\_\_\_\_ packer of \_\_\_\_\_ size, set at \_\_\_\_\_

\_\_\_\_\_, in casing perforated at \_\_\_\_\_ feet to \_\_\_\_\_ feet.

\_\_\_\_\_, in casing perforated at \_\_\_\_\_ feet to \_\_\_\_\_ feet.

Coal was encountered at \_\_\_\_\_ feet, thickness \_\_\_\_\_ inches, and at \_\_\_\_\_  
feet; thickness \_\_\_\_\_ inches; and at \_\_\_\_\_ feet; thickness \_\_\_\_\_ inches.

Liners were used as follows: (Give details) \_\_\_\_\_  
\_\_\_\_\_  
\_\_\_\_\_

July 31 1935 Date.

Approved Albert Neely, Owner.  
By \_\_\_\_\_ (TITLE)

OIL OR GAS WELL dry

Albert Neely  
 St Marys  
 Company  
 Address  
 WELL NO. 3 PLEASANT FARM J.M. Samp

COMPLETION DATA SHEET  
 No. 2  
 FORMATION RECORD

Name	Color	Character	Oil, Gas or Water	Top	Bottom	Thickness	Total Depth	Remarks
cow run			none	910	925	25	925	
salt sand			"	1060	1085	25	1085	
" "			"	1365	1430	65	1430	
" "			"	1510	1525			
" "			"	1633	1663	30		
maple sand			"	1663	1728	65		
lime			"	1728	1748	20		
lime sand			"	1768	1874	106		
big lignite								

~~shot~~  
 Well was not shot at ..... feet; well was shot at ..... feet.

Salt  
 Fresh water at no water ..... feet; salt  
 fresh water at no water ..... feet.

~~producing~~  
 Well was ..... hole.  
 dry

Oct 1 1934  
 Date

Approved Albert Neely  
 Owner

NOTE: All bottom formations must be noted as indicated above and all key-rocks and oil and gas sands must be recorded under their proper geological names in the district as well as any local names commonly used in the district for such strata.

LAMP, F. M., NO. 3.

Pleas-24.

By Albert Neely & Co.

Lafayette Dist.