

LATITUDE

39°22'30"

51°18'

LONGITUDE

7 1/2
1995
1900

7.5 OGIS topo location

7.5' loc _____ 15' loc _____
(calc.) _____

Company _____

Farm _____

Quad Willow Island

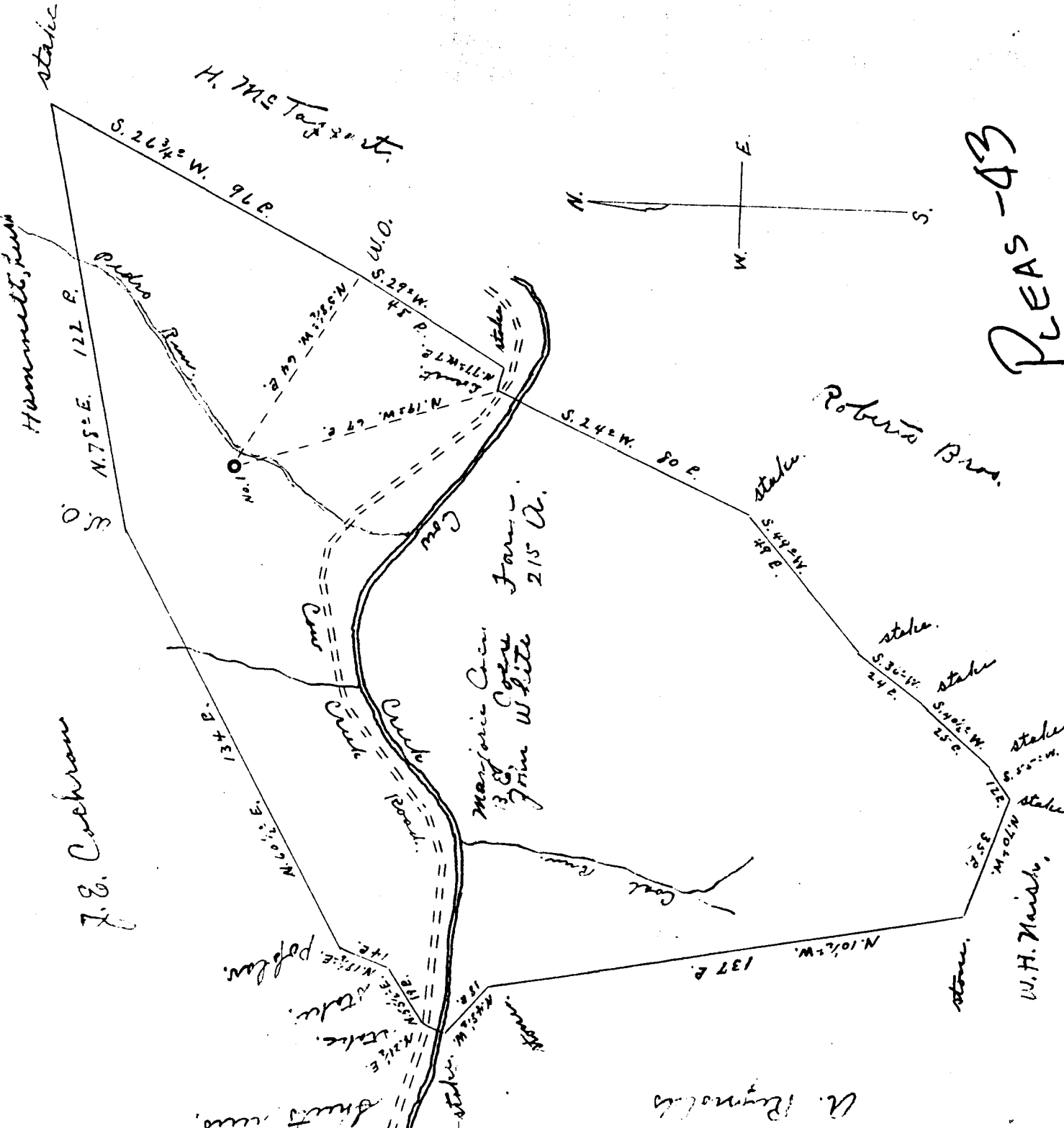
County Pleasant

District Grant

WELL LOCATION MAP

File No. 073-43

Plot of the proposed location of well no. 1 of the All In One, Producing and Refining Company, of Parkersburg, W. Va. by the Margorie Cien, B.E. Cien and John B. White, joint owners, of Farm, of St. Marys, West Virginia. Construction of 215 acres located in Grant District Pleasants County, U. S. A.



The undersigned, here by certifying that this map is correct and shows all the information to the best of my knowledge and belief, required by the Oil and Gas section of the Mining laws of West Virginia.
 scale 40 P. to 1"

J. M. Triplett, Engineer.

Acknowledged before me a Notary Public, for Pleasants County West Virginia this 26th day of June 1935,

H. P. Engle,
 Notary Public

A. Reynolds

PAID BY BANK OF AMERICA

1937

1937

1937

1937

1937

1937

1937

1937

1937

1937

1937

1937

1937

1937

1937

1937

1937

1937

1937

1937

1937

1937

1937

1937

1937

1937

1937

1937

1937

1937

1937

1937

1937

1937

1937

1937

1937

1937

1937

1937

1937

1937

1937

1937

1937

RECEIVED
MAY 24 1937
WEST VIRGINIA
GEORGETOWN ENERGY