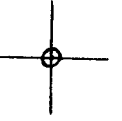


LATITUDE 39° 22' 30"



LONGITUDE 89° 40' 18"

7'5 OGIS topo location

7.5' loc 0.625 15' loc _____
 0.28W (calc.) _____

Company _____

Farm _____

Quad SCHULTZ 7 1/2'

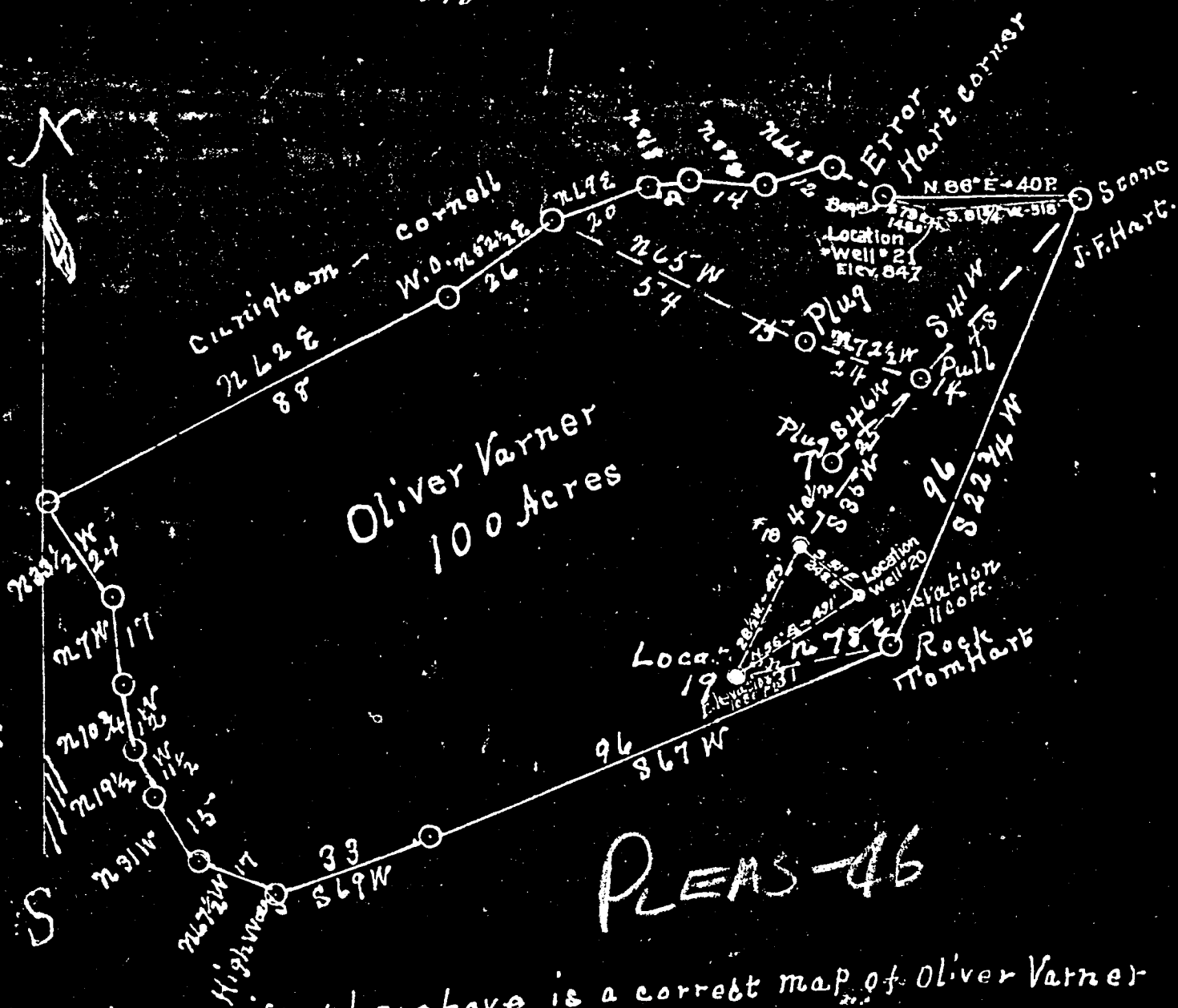
County PLEASANTS

District McKIM

WELL LOCATION MAP

File No. 073 - 0046

Adam Ward Lease Oliver Varner farm of 100 Acres
 McKim Dist. Pleasants Co. W. Va. on St. Marys
 Pike to Ellenboro



I hereby certify the above is a correct map of Oliver Varner
 farm and location of wells, except as error noted in boundary,
 the same as surveyed on October 20-1933 in McKim Dist
 Pleasants County West Virginia.

T. J. Hickel - Eng.
 Checked by P. E. Peters, C.E.
 Reg #485

Acknowledged before me Notary Public for Pleasants
 Co. W. Va. on this the 24-day of Oct. 1933

My commission expires
 July 5-1939

H. E. Beckman
 Notary Public

G. W. VARNER NO. 21 WELL.

No. 56 O.F. (Pleasants)

46

McKim District, Pleasants County, W. Va.
Adam Ward et al., Parkersburg, W. Va. (G. F. Powell).
On 200 acres, surface owned by Varner & Robinson, St. Marys, W. Va.,
' and mineral rights by Varner Heirs.
Drilled under permit Pleas-46, issued Aug. 29, 1935.
Elevation, 946'.
10" conductor, 8'; 8" casing, 160'; 6-5/8", 1017'.
Completion reported to Dept. of Mines Dec. 26, 1935.

	Top.	Bottom.
10" conductor	0	8
8" casing	0	160
Big dose of water at 35'		
Big red	560	660
✓ First Cow Run Sand	760	770
✓ Second Cow Run Sand	950	975
✓ First Salt Sand	1160	1210
✓ Second Salt Sand	1290	1360
✓ Maxton gas Sand	1450	1492
✓ Maxton oil Sand	1497	1527
Keener or lime Sand (just a show of oil and a little salt water)	1588	1611
✓ Big Lime	1611	1640
✓ Keener Sand	1640	1693
✓ Big Injun Sand	1693	1713
Total depth		1713