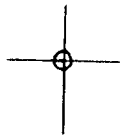


LATITUDE 39° 22' 30"

00° 51' 18" LONGITUDE



7'5 OGIS topo location

7.5' loc 2.29 S 15' loc \_\_\_\_\_  
2.21 W (calc.) \_\_\_\_\_

Company \_\_\_\_\_

Farm \_\_\_\_\_

Quad WILLOW ISLAND 7 1/2'

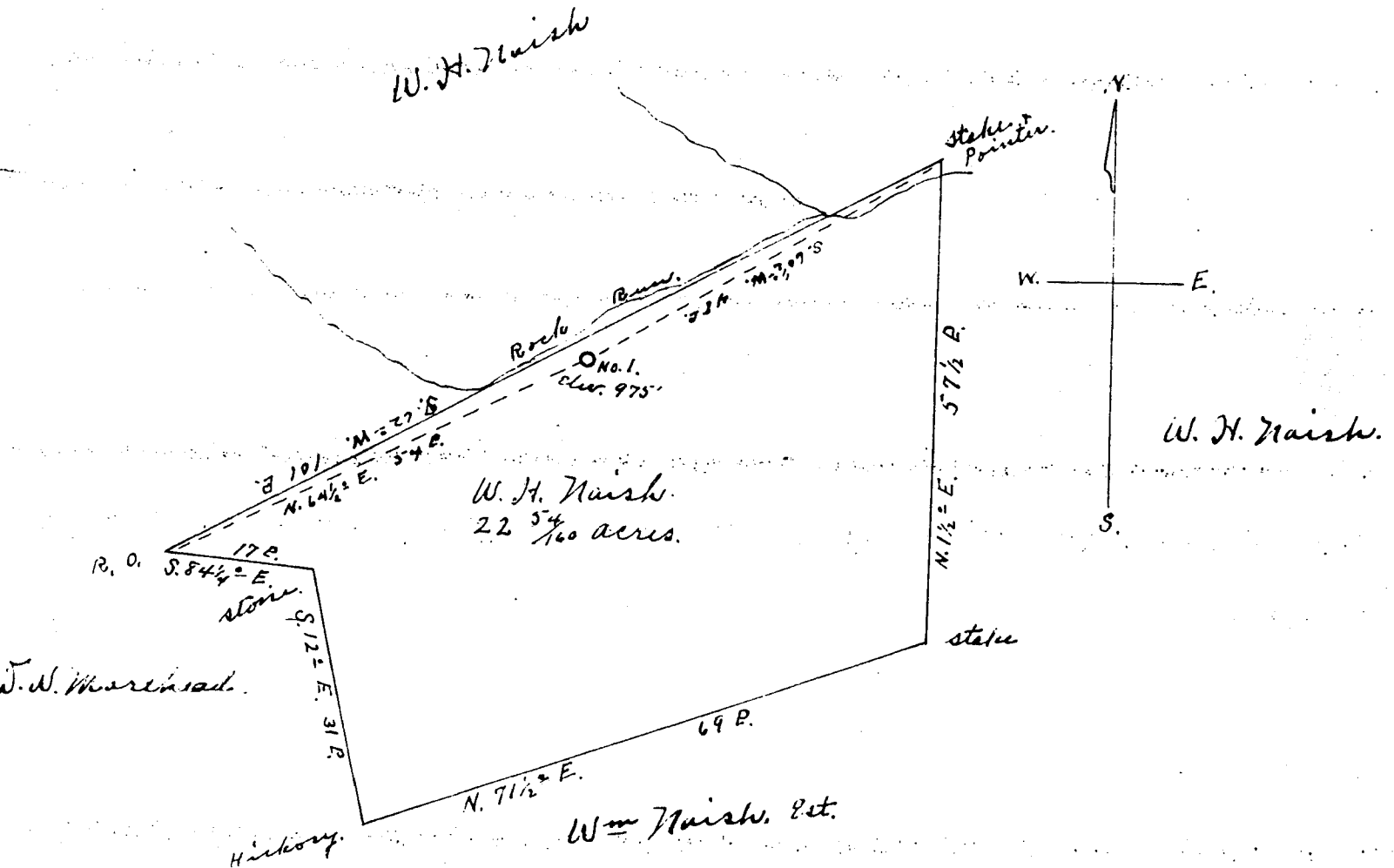
County PLEASANTS

District GRANT

WELL LOCATION MAP

File No. 073 - 0049

Plat of the proposed location of Well no. 1 of  
 O. J. Gabbit and others, of Williamson, West Virginia,  
 on the W. H. Naish Farm, consisting of 22 <sup>54</sup>/<sub>100</sub> acres,  
 located in Grant District, Pleasants County, W. Va.



PLEAS-49

I, the undersigned, hereby Certify that this map  
 is correct and shows all the information to the  
 best of my my knowledge and belief, required by  
 the oil and gas section of the Mining Laws of West Va.  
 Scale - 20 P. to 1"

Jno Triplett, Engineer.

Acknowledged before me a Notary Public.  
 for Pleasants County West Virginia this  
 11<sup>th</sup> day of September 1935.

H. P. Engle, Notary Public  
 My commission expires April 6 1936

Pleasant 49

# WEST VIRGINIA DEPARTMENT OF MINES

## OIL AND GAS DIVISION

### PRELIMINARY DATA SHEET NO. 1

File No. \_\_\_\_\_

Well No. 1

C.J. Gabbert

Company of Williamstown, W. Va.

on the W.H. Naish

Farm

containing 25 acres. Location Rock Run

Grant

District, in Pleasants

County, West Virginia

The surface of the above tract is owned in fee by W.H. Naish

of Williamstown, W. Va.

address, and the mineral rights are owned by

W.H. Naish

of Williamstown, W. Va.

The oil and gas privileges are held under lease by the above named company, and this well is drilled under permit No. 49 issued by the West Virginia Department of Mines, Oil and Gas Division Oct. 7, 1935

193

Elevation of surface at top of well, 1000

Spirit Barometric.

The number of feet of the different sized casings used in the well.

41 feet 8-1/4 size. ### Wood conductor.

206 feet 6-1/4 size, csg. \_\_\_\_\_ feet \_\_\_\_\_ sized csg.

\_\_\_\_\_ feet \_\_\_\_\_ size, csg. \_\_\_\_\_ feet \_\_\_\_\_ sized csg.

\_\_\_\_\_ feet \_\_\_\_\_ size, csg. \_\_\_\_\_ feet \_\_\_\_\_ sized csg.

\_\_\_\_\_ packer of \_\_\_\_\_ size, set at \_\_\_\_\_

\_\_\_\_\_ packer of \_\_\_\_\_ size, set at \_\_\_\_\_

\_\_\_\_\_ in casing perforated at \_\_\_\_\_ feet to \_\_\_\_\_ feet.

\_\_\_\_\_ in casing perforated at \_\_\_\_\_ feet to \_\_\_\_\_ feet.

Coal was encountered at 90 feet, thickness 5 Ft. #### inches, and at \_\_\_\_\_

feet; thickness \_\_\_\_\_ inches; and at \_\_\_\_\_ feet; thickness \_\_\_\_\_ inches.

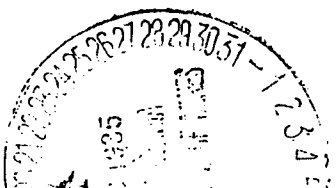
Liners were used as follows: (Give details) \_\_\_\_\_

Nov. 25, 35

Date.

Approved C.J. Gabbert, Owner.

By \_\_\_\_\_ (TITLE)



Pleas-49

OIL OR GAS WELL OIL.

C.J. Gabbert  
.....Company

Williamstown, W. Va.  
.....Address

WELL NO. 1 FARM N.H. Naish

COMPLETION DATA SHEET  
No. 2  
FORMATION RECORD

Name	Color	Character	Oil, Gas or Water	Top	Bottom	Thickness	Total Depth	Remarks
Shale	Lt.			9	90	80	90	
Coal				90	95	5	95	
Shale				95	102	7	102	
Sand	Gray			102	165	63	165	
Shale				165	235	70	235	
Sand	Gray			235	260	25	260	
Shale				260	375	115	375	
Sand	Gray	pay from 395 to 428		375	428	53	428	1st-streak
Shale		<del>##### top down</del>		428	486	58	486	2nd "
Sand	Gray	Oil found from top down		486	526	40	526	
Shale				526	531	5	531	

Known in this locality as "Herpes Sand"  
" " " " "Horseweck"

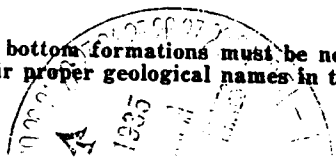
shot Well was not shot at 486 to 496 and from 518 to 526 feet; well was shot at \_\_\_\_\_ feet.

Fresh water at \_\_\_\_\_ feet; ~~salt~~ fresh water at 526 Ft. Small Amt. \_\_\_\_\_ feet.

producing Well ~~###~~ ### note. ~~###~~

Nov. 25, 55 Date Approved OJ Gabbert Owner

NOTE: All bottom formations must be noted as indicated above and all key-rocks and oil and gas sands must be recorded under their proper geological names in the district as well as any local names commonly used in the district for such strata.



NAISH, W. H., NO. 1.

Pleas-49.

By A. J. Gabbert.

Grant Dist.