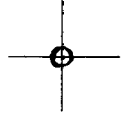


LATITUDE 39° 22' 30"



LONGITUDE 81° 2' 30"

7'5 OGIS topo location

7.5' loc 0.325 15' loc \_\_\_\_\_  
0.57w (calc.) \_\_\_\_\_

Company \_\_\_\_\_

Farm \_\_\_\_\_

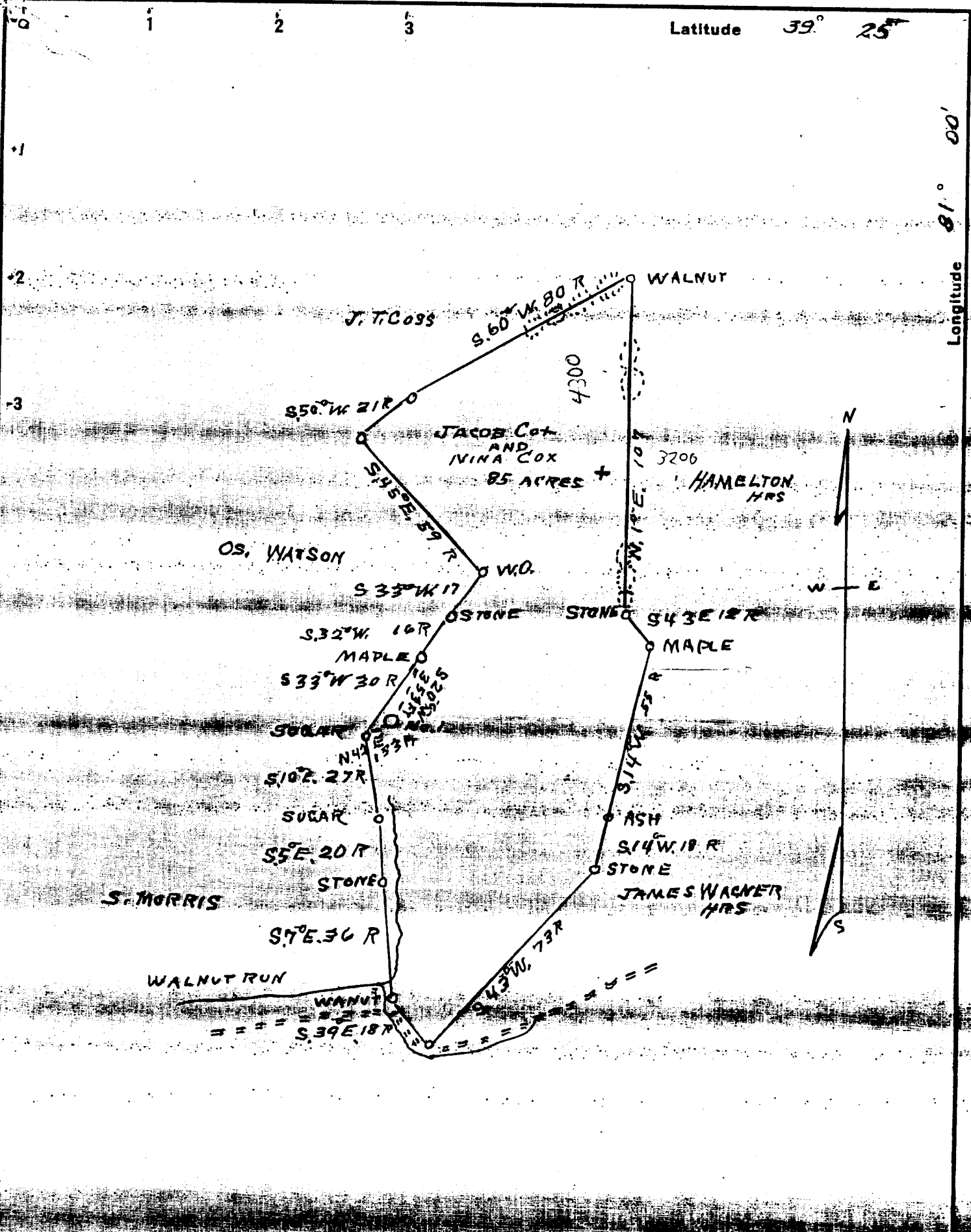
Quad ELLENBORO 7 1/2'

County PLEASANTS

District LAFAYETTE

WELL LOCATION MAP

File No. 073-0076



Surveyed & Platted By Robert Chalfant

Company	SUD POWELL
Address	MAXWEL W.V.A.
Farm	JACOB COX AND NINA COX
Tract	Acres 85 Lease No.
Well (Farm) No.	Serial No.
Elevation (Spirit Level)	785
Quadrangle	ST. MARYS. E.
County	PLEASANTS District LAFAYETTE
Engineer	B. F. Rinehart.
Engineer's Registration No.	648
File No.	Drawing No.
Date	Oct. 17, 1936 Scale 40 RODS TO 1 INCH

STATE OF WEST VIRGINIA  
DEPARTMENT OF MINES  
OIL AND GAS DIVISION  
CHARLESTON

**WELL LOCATION MAP**

FILE NO. PLEAS-76

+ Denotes location of well on United States Topographic Maps, scale 1 to 62,500, latitude and longitude lines being represented by border lines as shown.

— Denotes one inch spaces on border line of original tracing.

WEST VIRGINIA DEPARTMENT OF MINES  
OIL AND GAS DIVISION

WELL RECORD

Permit No. 76

Oil or Gas Well  
(Kind)

Company Sam Powell  
 Address Maxwell W Va  
 Farm Flat Cox Acres 80  
 Location (waters) \_\_\_\_\_  
 Well No. \_\_\_\_\_ Elev. \_\_\_\_\_  
 District Lafayette County Pleasants  
 The surface of tract is owned in fee by Flat Cox  
W Va Address \_\_\_\_\_  
 Mineral rights are owned by Flat Cox  
 Address \_\_\_\_\_  
 Drilling commenced sep 21 - 1936  
 Drilling completed Dec 27 - 1936  
 Date shot \_\_\_\_\_ Depth of shot \_\_\_\_\_  
 Open Flow /10ths Water in \_\_\_\_\_ Inch  
/10ths Merc. in \_\_\_\_\_ Inch  
 Volume 15,000 \_\_\_\_\_ Cu. Ft.  
 Rock Pressure \_\_\_\_\_ lbs \_\_\_\_\_ hrs.  
 Oil \_\_\_\_\_ bbls., 1st 24 hrs.  
 Fresh water \_\_\_\_\_ feet \_\_\_\_\_ feet  
 Salt water \_\_\_\_\_ feet \_\_\_\_\_ feet

Casing and Tubing	Used in Drilling	Left in Well	Packers
Size			
16			Kind of Packer
13			
10 <u>wood</u>	<u>12</u>		Size of
8 1/4	<u>244</u>		
6 5/8	<u>861</u>		Depth set
5 3/16			
3			Perf. top
2			Perf. bottom
Liners Used			Perf. top
			Perf. bottom

CASING CEMENTED \_\_\_\_\_ SIZE \_\_\_\_\_ No. FT \_\_\_\_\_ Date \_\_\_\_\_  
 COAL WAS ENCOUNTERED AT \_\_\_\_\_ FEET \_\_\_\_\_ INCHES  
 \_\_\_\_\_ FEET \_\_\_\_\_ INCHES FEET \_\_\_\_\_ INCHES  
 \_\_\_\_\_ FEET \_\_\_\_\_ INCHES FEET \_\_\_\_\_ INCHES

Formation	Color	Hard or Soft	Top	Bottom	Oil Gas or Water	Depth Found	Remarks
Clay	Red	soft		12			
Sand	white	-	12	42			
Slate	-	-	42	52			
Sand	-	-	52	92	water		
Shale	Red	-	72	180			
Sand	white	-	180	240			
Slate	-	-	240	345			
Shale	Red	-	345	390			
Slate	Red	-	390	505			
Slate	Black	-	505	545			
Slate	white	-	545	580			
Shale	Red	-	580	725			
Sand	white	-	595	790			
Shale	Red	-	725	790			
Slate	Black	-	790	808			
Slate	white	-	808	826			
Sand	white	-	826	861			
Slate	-	-	861	971			
Slate	-	-	971	986			
Sand	Black	-	986	1056			
Slate	Black	-	1056	1080			

water

244' - 8 1/4"

861' - 6 5/8"

COX, JACOB, & WIFE, NO. 1.

Pleas-76.

By Sud Powell.

Lafayette Dist.