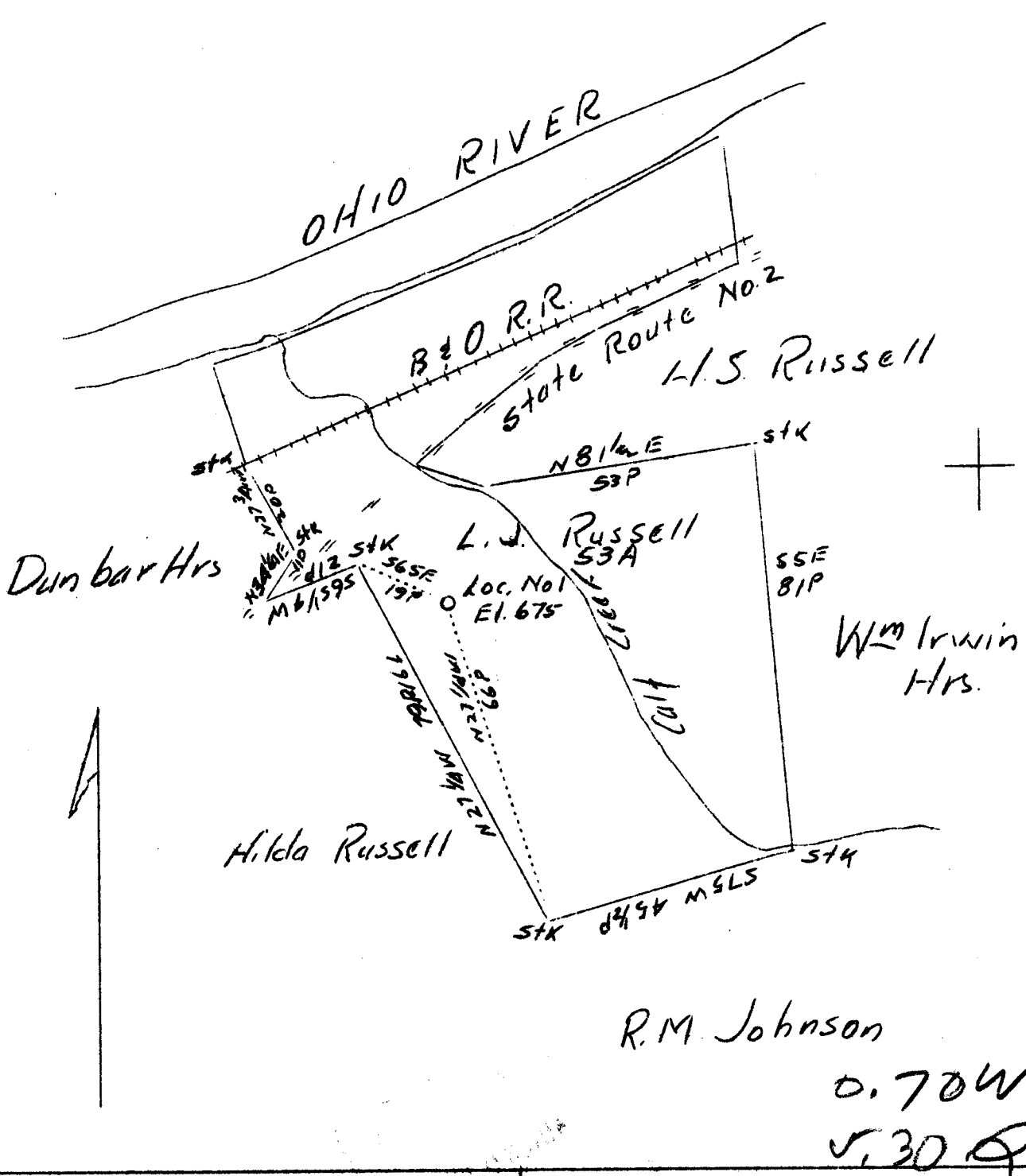


LATITUDE 39° 25'

LONGITUDE 81° 20'



R.M. Johnson
 O. 70W
 V. 30 Q

Company	The Meabon Drilling Co.
Address	Huntington, W.Va.
Farm	Lucy J. Russell
Tract	Acres 53 Lease No.
Well (Farm) No.	1 Serial No.
Elevation (Spirit Level)	675'
Quadrangle	Marietta
County	Pleasants District Grant
Engineer	Jno. Triplett
Engineer's Registration No.	
File No.	Drawing No.
Date	Aug. 6, 1937 Scale 1"-30P.

STATE OF WEST VIRGINIA
 Department of Mines
 OIL AND GAS DIVISION
 CHARLESTON

WELL LOCATION MAP
 File No. PLEAS-97

+ Denotes location of well on United States Topographic Maps, scale 1 to 62,500, latitude and longitude lines being represented by border lines as shown.

— Denotes one inch spaces on border line of original tracing.

50
10
20
30
40
50
60
70
80
90
100
110
120
130
140
150
160
170
180
190
200
210
220
230
240
250
260
270
280
290
300
310
320
330
340
350
360
370
380
390
400
410
420
430
440
450
460
470
480
490
500

34 1/2
 35 1/2
 36 1/2
 37 1/2
 38 1/2
 39 1/2
 40 1/2
 41 1/2
 42 1/2
 43 1/2
 44 1/2
 45 1/2
 46 1/2
 47 1/2
 48 1/2
 49 1/2
 50 1/2
 51 1/2
 52 1/2
 53 1/2
 54 1/2
 55 1/2
 56 1/2
 57 1/2
 58 1/2
 59 1/2
 60 1/2
 61 1/2
 62 1/2
 63 1/2
 64 1/2
 65 1/2
 66 1/2
 67 1/2
 68 1/2
 69 1/2
 70 1/2
 71 1/2
 72 1/2
 73 1/2
 74 1/2
 75 1/2
 76 1/2
 77 1/2
 78 1/2
 79 1/2
 80 1/2
 81 1/2
 82 1/2
 83 1/2
 84 1/2
 85 1/2
 86 1/2
 87 1/2
 88 1/2
 89 1/2
 90 1/2
 91 1/2
 92 1/2
 93 1/2
 94 1/2
 95 1/2
 96 1/2
 97 1/2
 98 1/2
 99 1/2
 100 1/2
 101 1/2
 102 1/2
 103 1/2
 104 1/2
 105 1/2
 106 1/2
 107 1/2
 108 1/2
 109 1/2
 110 1/2
 111 1/2
 112 1/2
 113 1/2
 114 1/2
 115 1/2
 116 1/2
 117 1/2
 118 1/2
 119 1/2
 120 1/2
 121 1/2
 122 1/2
 123 1/2
 124 1/2
 125 1/2
 126 1/2
 127 1/2
 128 1/2
 129 1/2
 130 1/2
 131 1/2
 132 1/2
 133 1/2
 134 1/2
 135 1/2
 136 1/2
 137 1/2
 138 1/2
 139 1/2
 140 1/2
 141 1/2
 142 1/2
 143 1/2
 144 1/2
 145 1/2
 146 1/2
 147 1/2
 148 1/2
 149 1/2
 150 1/2
 151 1/2
 152 1/2
 153 1/2
 154 1/2
 155 1/2
 156 1/2
 157 1/2
 158 1/2
 159 1/2
 160 1/2
 161 1/2
 162 1/2
 163 1/2
 164 1/2
 165 1/2
 166 1/2
 167 1/2
 168 1/2
 169 1/2
 170 1/2
 171 1/2
 172 1/2
 173 1/2
 174 1/2
 175 1/2
 176 1/2
 177 1/2
 178 1/2
 179 1/2
 180 1/2
 181 1/2
 182 1/2
 183 1/2
 184 1/2
 185 1/2
 186 1/2
 187 1/2
 188 1/2
 189 1/2
 190 1/2
 191 1/2
 192 1/2
 193 1/2
 194 1/2
 195 1/2
 196 1/2
 197 1/2
 198 1/2
 199 1/2
 200 1/2
 201 1/2
 202 1/2
 203 1/2
 204 1/2
 205 1/2
 206 1/2
 207 1/2
 208 1/2
 209 1/2
 210 1/2
 211 1/2
 212 1/2
 213 1/2
 214 1/2
 215 1/2
 216 1/2
 217 1/2
 218 1/2
 219 1/2
 220 1/2
 221 1/2
 222 1/2
 223 1/2
 224 1/2
 225 1/2
 226 1/2
 227 1/2
 228 1/2
 229 1/2
 230 1/2
 231 1/2
 232 1/2
 233 1/2
 234 1/2
 235 1/2
 236 1/2
 237 1/2
 238 1/2
 239 1/2
 240 1/2
 241 1/2
 242 1/2
 243 1/2
 244 1/2
 245 1/2
 246 1/2
 247 1/2
 248 1/2
 249 1/2
 250 1/2
 251 1/2
 252 1/2
 253 1/2
 254 1/2
 255 1/2
 256 1/2
 257 1/2
 258 1/2
 259 1/2
 260 1/2
 261 1/2
 262 1/2
 263 1/2
 264 1/2
 265 1/2
 266 1/2
 267 1/2
 268 1/2
 269 1/2
 270 1/2
 271 1/2
 272 1/2
 273 1/2
 274 1/2
 275 1/2
 276 1/2
 277 1/2
 278 1/2
 279 1/2
 280 1/2
 281 1/2
 282 1/2
 283 1/2
 284 1/2
 285 1/2
 286 1/2
 287 1/2
 288 1/2
 289 1/2
 290 1/2
 291 1/2
 292 1/2
 293 1/2
 294 1/2
 295 1/2
 296 1/2
 297 1/2
 298 1/2
 299 1/2
 300 1/2
 301 1/2
 302 1/2
 303 1/2
 304 1/2
 305 1/2
 306 1/2
 307 1/2
 308 1/2
 309 1/2
 310 1/2
 311 1/2
 312 1/2
 313 1/2
 314 1/2
 315 1/2
 316 1/2
 317 1/2
 318 1/2
 319 1/2
 320 1/2
 321 1/2
 322 1/2
 323 1/2
 324 1/2
 325 1/2
 326 1/2
 327 1/2
 328 1/2
 329 1/2
 330 1/2
 331 1/2
 332 1/2
 333 1/2
 334 1/2
 335 1/2
 336 1/2
 337 1/2
 338 1/2
 339 1/2
 340 1/2
 341 1/2
 342 1/2
 343 1/2
 344 1/2
 345 1/2
 346 1/2
 347 1/2
 348 1/2
 349 1/2
 350 1/2
 351 1/2
 352 1/2
 353 1/2
 354 1/2
 355 1/2
 356 1/2
 357 1/2
 358 1/2
 359 1/2
 360 1/2
 361 1/2
 362 1/2
 363 1/2
 364 1/2
 365 1/2
 366 1/2
 367 1/2
 368 1/2
 369 1/2
 370 1/2
 371 1/2
 372 1/2
 373 1/2
 374 1/2
 375 1/2
 376 1/2
 377 1/2
 378 1/2
 379 1/2
 380 1/2
 381 1/2
 382 1/2
 383 1/2
 384 1/2
 385 1/2
 386 1/2
 387 1/2
 388 1/2
 389 1/2
 390 1/2
 391 1/2
 392 1/2
 393 1/2
 394 1/2
 395 1/2
 396 1/2
 397 1/2
 398 1/2
 399 1/2
 400 1/2
 401 1/2
 402 1/2
 403 1/2
 404 1/2
 405 1/2
 406 1/2
 407 1/2
 408 1/2
 409 1/2
 410 1/2
 411 1/2
 412 1/2
 413 1/2
 414 1/2
 415 1/2
 416 1/2
 417 1/2
 418 1/2
 419 1/2
 420 1/2
 421 1/2
 422 1/2
 423 1/2
 424 1/2
 425 1/2
 426 1/2
 427 1/2
 428 1/2
 429 1/2
 430 1/2
 431 1/2
 432 1/2
 433 1/2
 434 1/2
 435 1/2
 436 1/2
 437 1/2
 438 1/2
 439 1/2
 440 1/2
 441 1/2
 442 1/2
 443 1/2
 444 1/2
 445 1/2
 446 1/2
 447 1/2
 448 1/2
 449 1/2
 450 1/2
 451 1/2
 452 1/2
 453 1/2
 454 1/2
 455 1/2
 456 1/2
 457 1/2
 458 1/2
 459 1/2
 460 1/2
 461 1/2
 462 1/2
 463 1/2
 464 1/2
 465 1/2
 466 1/2
 467 1/2
 468 1/2
 469 1/2
 470 1/2
 471 1/2
 472 1/2
 473 1/2
 474 1/2
 475 1/2
 476 1/2
 477 1/2
 478 1/2
 479 1/2
 480 1/2
 481 1/2
 482 1/2
 483 1/2
 484 1/2
 485 1/2
 486 1/2
 487 1/2
 488 1/2
 489 1/2
 490 1/2
 491 1/2
 492 1/2
 493 1/2
 494 1/2
 495 1/2
 496 1/2
 497 1/2
 498 1/2
 499 1/2
 500 1/2

RECEIVED
AUG 30 1937
 U.S. GEOLOGICAL SURVEY

15 16 17 18 19 20 21 22 23 24 25

50
 10
 20
 30
 40
 50
 60
 70
 80
 90
 100
 110
 120
 130
 140
 150
 160
 170
 180
 190
 200
 210
 220
 230
 240
 250
 260
 270
 280
 290
 300
 310
 320
 330
 340
 350
 360
 370
 380
 390
 400
 410
 420
 430
 440
 450
 460
 470
 480
 490
 500