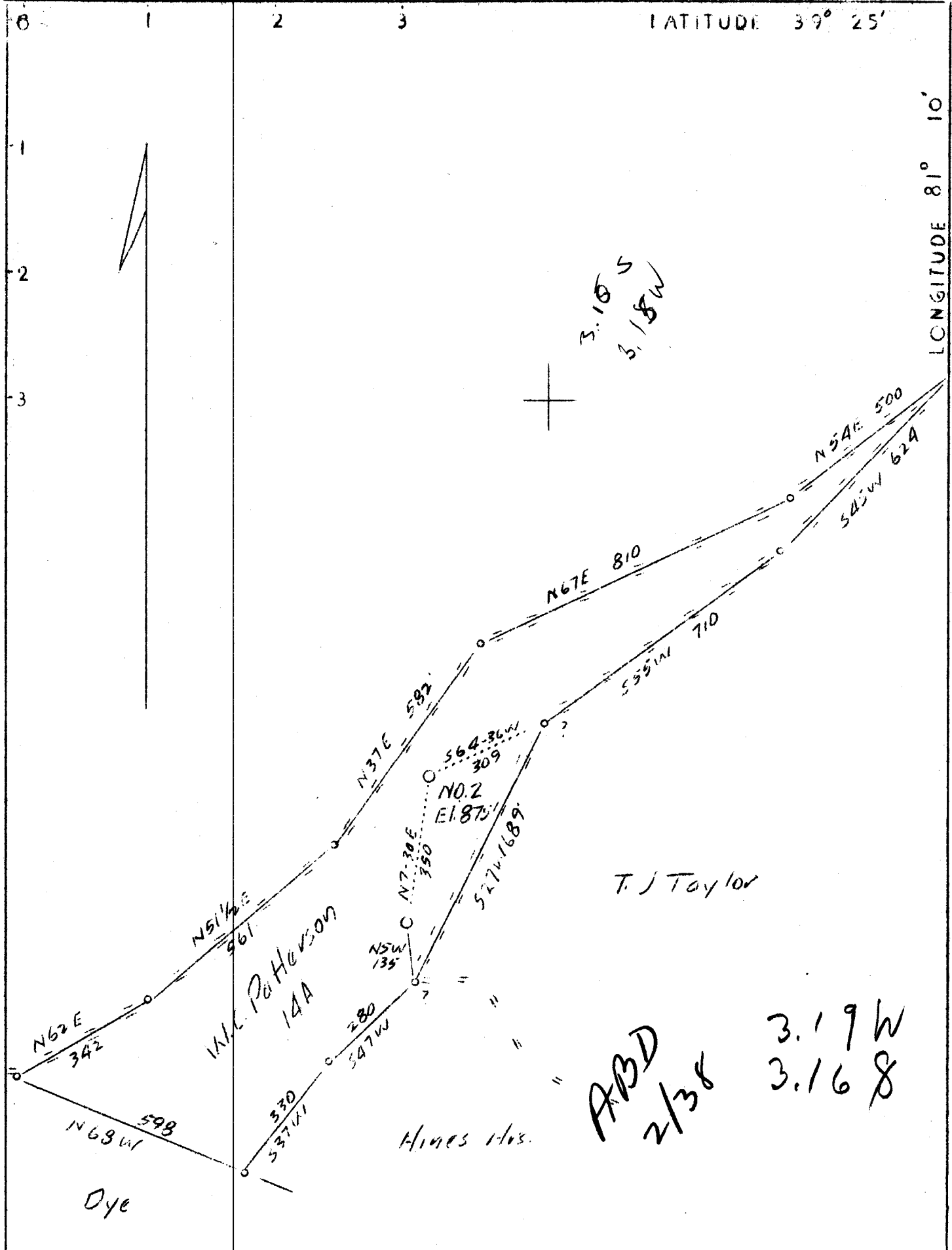


M



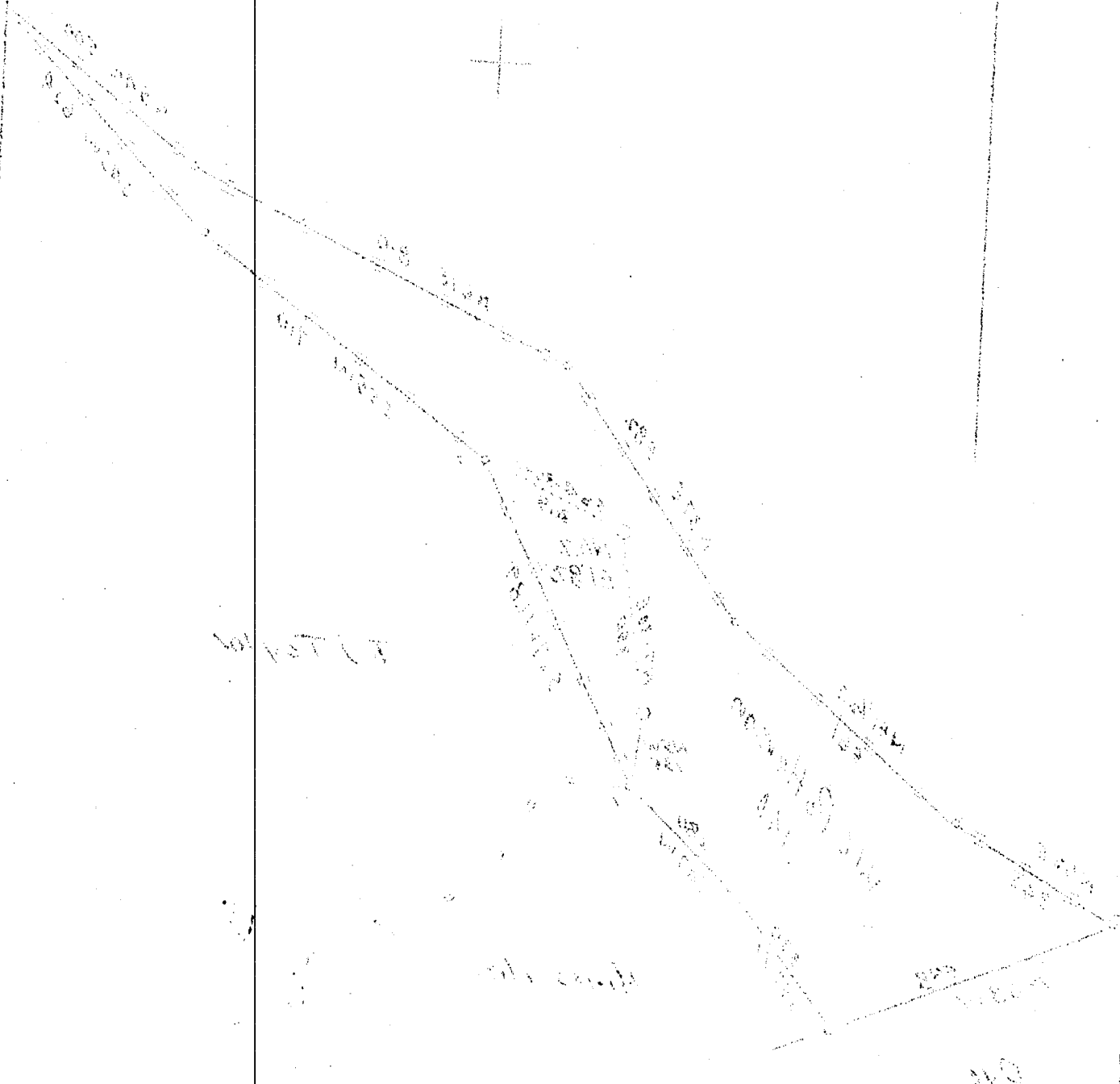
Company	W.C.Patterson Oil & Gas Co.
Address	Jamestown, N.J.
Farm	W.C.Patterson
Tract	Acres 14 Lease No.
Well (Farm) No.	2 Serial No.
Elevation (Spirit Level)	875
Quadrangle	St.Marys <b>N 6</b>
County	Pleasants District Washington
Engineer	Parker E. Peters
Engineer's Registration No.	485
File No.	Drawing No.
Date	Nov. 13, 1937 Scale 1"-300'

STATE OF WEST VIRGINIA  
 Department of Mines  
 OIL AND GAS DIVISION  
 CHARLESTON

WELL LOCATION MAP  
 File No. PLEAS-106

+ Denotes location of well on United States Topographic Maps, scale 1 to 62,500, latitude and longitude lines being represented by border lines as shown.

- Denotes one inch spaces on border line of original tracing.



1000 ft  
1500 ft  
1000 ft  
1500 ft

1000 ft  
1500 ft

1000 ft  
1500 ft  
1000 ft  
1500 ft

1000 ft  
1500 ft

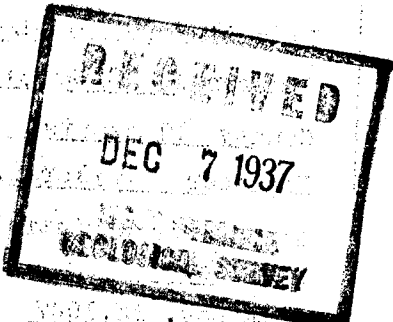
1000 ft  
1500 ft  
1000 ft  
1500 ft

1000 ft  
1500 ft

1000 ft  
1500 ft  
1000 ft  
1500 ft

1000 ft  
1500 ft

1000 ft  
1500 ft  
1000 ft  
1500 ft  
1000 ft  
1500 ft  
1000 ft  
1500 ft  
1000 ft  
1500 ft  
1000 ft  
1500 ft  
1000 ft  
1500 ft  
1000 ft  
1500 ft



WEST VIRGINIA DEPARTMENT OF MINES

Oil & Gas Division

WELL RECORD

Permit No. Pleas-107

St. Marys Quad.

Dry hole

CASING & TUBING

8-1/4 150

Company Grants Athey Oil Gas Co.  
 Address Williamstown, W. Va.  
 Farm J. D. Smith ACRES 45  
 Location Middle Island Creek  
 Well No. 3 ELEV. 790  
 District Union Pleasant County  
 Surface & Mineral J. I. Smith, Ben Run, W. Va.  
 Drilling commenced Sept. 21, 1937  
 Drilling completed Oct. 31, 1937  
 Open Flow -  
 Volume -  
 Rock Pressure -  
 Fresh Water -  
 Salt Water -

ADD  
12/28

Formation Color <sup>Mar</sup> 5 TOP Base Result Formation Color <sup>Mar</sup> 5 TOP Base Result

Formation Color <sup>Mar</sup> 5	TOP Base Result	Formation Color <sup>Mar</sup> 5	TOP Base Result
200 ft. Red rock -	medium	No Oil	Well Dry
100 ft. White rock	"	or water	No good
150 ft. Red Rock	"	in this	Sand
125 ft. White	"	well	drowned
15 ft. Pink rock	"		in this
10 ft. Sandy Lime	hard		well

