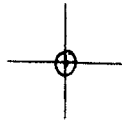


LATITUDE 39° 25' 00"



00' 50" 18" LONGITUDE

7.5 OGIS topo location

7.5' loc 0.625 15' loc \_\_\_\_\_  
1.96W (calc.) \_\_\_\_\_

Company \_\_\_\_\_

Farm \_\_\_\_\_

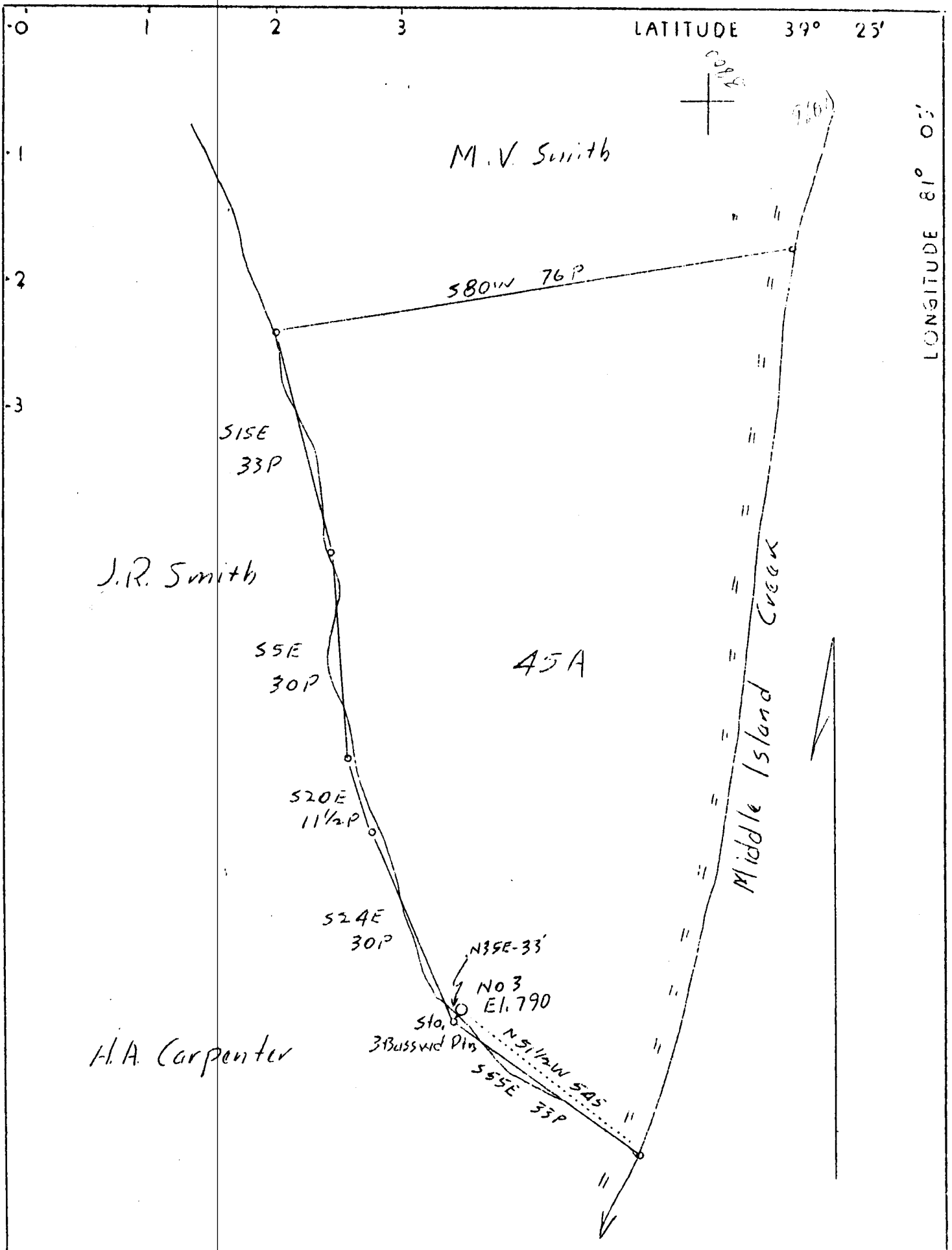
Quad BENS RUN 7 1/2'

County PLEASANTS

District UNION

WELL LOCATION MAP

File No. 073-0107



|                             |                             |            |           |
|-----------------------------|-----------------------------|------------|-----------|
| Company                     | Grant & Athey Oil & Gas Co. |            |           |
| Address                     | Williamstown, W.Va.         |            |           |
| Farm                        | J.I. Smith                  |            |           |
| Tract                       | Acres                       | 45         | Lease No. |
| Well (Farm) No.             | 3                           | Serial No. |           |
| Elevation (Spirit Level)    | 790                         |            |           |
| Quadrangle                  | St. Marys                   |            |           |
| County                      | Pleasants                   | District   | Union     |
| Engineer                    | Parker                      | E. Peters  |           |
| Engineer's Registration No. | 485                         |            |           |
| File No.                    | Drawing No.                 |            |           |
| Date                        | Oct. 20, 1937               | Scale      | 1"=300'   |

STATE OF WEST VIRGINIA  
 Department of Mines  
 OIL AND GAS DIVISION  
 CHARLESTON

WELL LOCATION MAP

File No. PLEAS-107

+ Denotes location of well on United States Topographic Maps, scale 1 to 62,500, latitude and longitude lines being represented by border lines as shown.

— Denotes one inch spaces on border line of original tracing.

WEST VIRGINIA DEPARTMENT OF MINES

Oil & Gas Division

WELL RECORD

Permit No. Pleas-107

Dry hole

St. Marys Quad.

CASING & TUBING

Company Grants Athey Oil Gas Co.  
 Address Williamstown, W. Va.  
 Farm J. D. Smith ACRES 45  
 Location Middle Island Creek  
 Well No. 3 ELEV. 790  
 District Union Pleasant County  
 Surface & Mineral J. I. Smith, Ben Run, W. Va.  
 Drilling commenced Sept. 21, 1937  
 Drilling completed Oct. 31, 1937  
 Open Flow -  
 Volume -  
 Rock Pressure -  
 Fresh Water -  
 Salt Water -

8-1/4 150

"

Formation Color <sup>140'</sup> TOP Base Result Formation Color <sup>140'</sup> TOP Base Result

| Formation Color    | TOP  | Base   | Result   | Formation Color | TOP | Base | Result |
|--------------------|------|--------|----------|-----------------|-----|------|--------|
| 200 ft. Red rock   | -    | medium | No Oil   | Well Dry        |     |      |        |
| 100 ft. White rock | "    | "      | or water | No good         |     |      |        |
| 150 ft. Red Rock   | "    | "      | in this  | Sand            |     |      |        |
| 125 ft. White      | "    | "      | well     | drowned         |     |      |        |
| 15 ft. Pink rock   | "    | 600    |          | in this         |     |      |        |
| 10 ft. Sandy Lime  | hard |        |          | well            |     |      |        |

SMITH, J. I., NO. 3.

Pleas-107.

By Grant & Athey Oil & Gas Co.

Union Dist.

*Smith Record -*