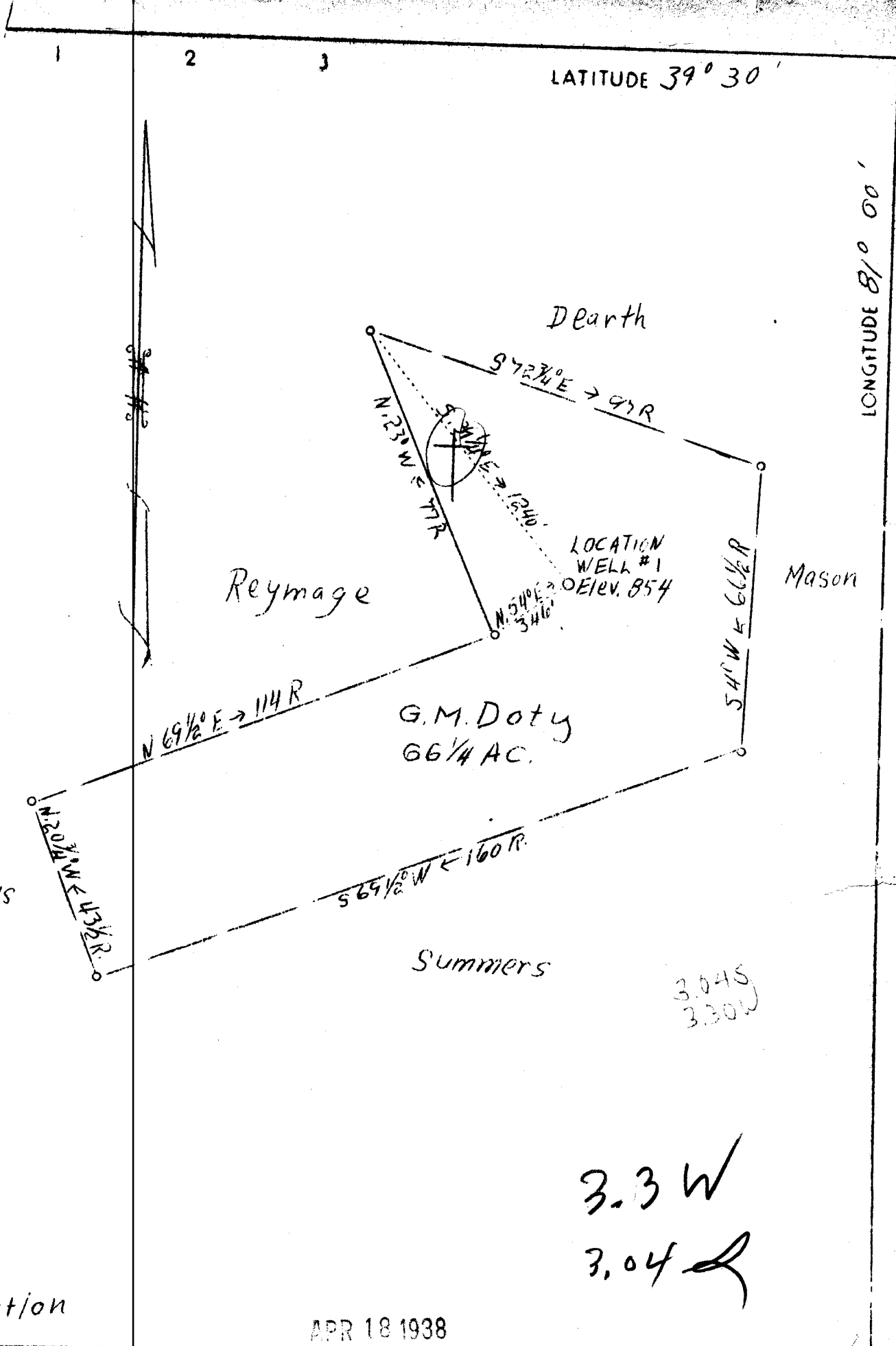


LATITUDE 39° 30'

LONGITUDE 81° 00'



Adams

Reymage

Dearth

Mason

G.M. Doty  
66 1/4 AC.

Summers

3.045  
3.30W

3.3 W  
3.04 L

Location

APR 18 1938

Company	Doty Oil & Gas Co.
Address	Booch Bottom, W.Va.
Farm	G.M. Doty
Tract	Acres 66 1/2 Lease No.
Well (Farm) No.	1 Serial No.
Elevation (Spirit Level)	854
Quadrangle	St. Marys
County	Pleasants District Union
Engineer	Parker E. Peters
Engineer's Registration No.	485
File No.	Drawing No.
Date	Oct. 20, 1937 Scale 1"=30 Rods

STATE OF WEST VIRGINIA  
Department of Mines  
OIL AND GAS DIVISION  
CHARLESTON

WELL LOCATION MAP  
File No. Pleas-118-0

Denotes location of well on United States Topographic Maps, scale 1 to 62,500, latitude and longitude lines being represented by border lines as shown.

Denotes one inch spaces on border line of original tracing.

WEST VIRGINIA DEPARTMENT OF MINES

OIL & GAS DIVISION

W E L L R E C O R D

Oil Well

Permit No. Pleas-118

St. Marys Quad.

CASING & TUBING

Company	Doty Oil & Gas Co.,	8-1/4	11	none
Address	Bens Run, W. Va.	6-1/4	290	none
Farm	G. W. Doty ACRES 65	4-7/8	790	790
Location	Middle Island Creek	2		824
Well No.	One ELEV. - 854'			
District	Union - Pleasants County			No Packer
Surface	G. W. Doty, Bens Run, W. Va.			
Mineral	G. W. Doty et al, Bens Run, W. Va.			
Commenced	May 28, 1938			
Completed	About June 18, 1938			No Coal
Date shot	7/1/38 - Depth 808			
Open Flow	-			
Volume	-			
Rock Pressure	-			
Oil	4 bbls. 1st 24 hrs.			
Salt Water	About 1/4 bbl.			

*ADD  
8/52*

Formation Color <sup>40'</sup> TOP Base Result Formation Color <sup>40'</sup> TOP Base Result

Formation Color	<sup>40'</sup> TOP	Base	Result	Formation Color	<sup>40'</sup> TOP	Base	Result
Soil	0	11					
Sand	11	15					
Red Rock	15	31					
Lime	31	34					
Sand	34	46					
Red Rock	46	65					
Black Shale	65	80					
Lime	80	120					
Red Rock	120	150					
Lime	150	170					
Red Rock	170	225					
Lime & Red Rock	225	720					
White Slate	720	740					
Red Rock & Lime	740	790					
Lime	790	806					
✓ Cow Run Sand	806	815					
Bottom of Hole		825					

