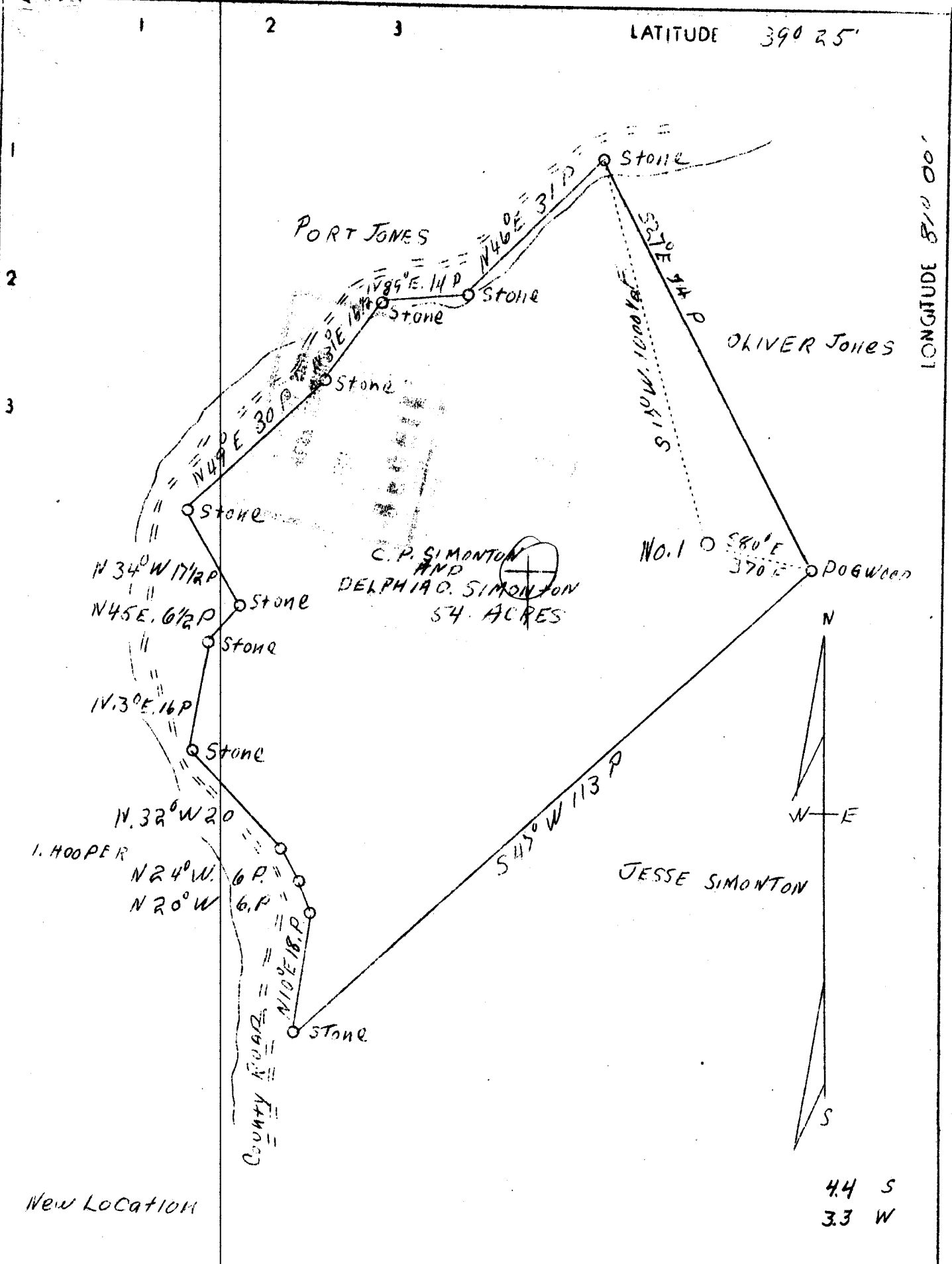


M

LATITUDE 39° 25'

LONGITUDE 81° 00'



New Location

44 S
33 W

| | | |
|-----------------------------|---------------------------------|---|
| Company | H.F. Simonton and H.W. Riggs | STATE OF WEST VIRGINIA Department of Mines OIL AND GAS DIVISION CHARLESTON WELL LOCATION MAP File No. <u>Pleas-119</u> Denotes location of well on United States Topographic Maps, scale 1 to 62,500, latitude and longitude lines being represented by border lines as shown. Denotes one inch spaces on border line of original tracing. |
| Address | St. Marys, W.Va. | |
| Farm | C.P. & Delphia O. Simonton | |
| Tract | Acres 54 Lease No. | |
| Well (Farm) No. | 1 Serial No. | |
| Elevation (Spirit Level) | 1037 | |
| Quadrangle | St. Marys E.C. | |
| County | Pleasants District Lafayette | |
| Engineer | J.V. Dunbar | |
| Engineer's Registration No. | 65 | |
| File No. | C-23-L Drawing No. | |
| Date | April 29, 1938 Scale 1"=20 Rds. | |

WEST VIRGINIA DEPARTMENT OF MINES

OIL & GAS DIVISION

WELL RECORD

Permit No. Pleas-119

St. Marys Quad.

Gas Well

CASING & TUBING

| | | | |
|--------------------|------------------------------------|------------------|-----------|
| Company | Adlai Oil & Gas Co. | 8-1/4 | 410 |
| Address | St. Marys, W. Va. | 6-5/8 | 1225 |
| Farm | C. P. Simonton ACRES 22 | 5-3/16 | 1400 1400 |
| Location | Rock Run | | |
| Well No. | One ELEV. 1037 | | |
| District | Lafayette COUNTY Pleasants | Packer - Disk | |
| Surface | C.P. Simonton, Hebron, W. Va. | Size - 6-1/2 | |
| Mineral | Same & H. W. Riggs, Hebron, W. Va. | Depth set - 1400 | |
| Drilling commenced | May 23, 1938 | | |
| Drilling completed | June 17, 1938 | | |
| Shot | June 21st, 1938 - Depth 1843 to 53 | | |
| Open Flow | 10/10ths Merc. in 2-inch | | |
| Volume | 554,000 c.f. | | |
| Rock Pressure | 300 lbs. 1 hr. | | |
| Oil | none | | |
| Fresh Water | none | | |
| Salt Water | none | | |

Formation Color ^{ft} TOP Base Result Formation Color ^{ft} TOP Base Result

| Formation | Color | ft | TOP | Base | Result | Formation | Color | ft | TOP | Base | Result |
|---------------|-------|-----|------|------|----------|-----------|-------|----|-----|------|--------|
| Clay | | s | 1 | 7 | | | | | | | |
| Sand | | h | 7 | 40 | | | | | | | |
| Red Rock | | s | 40 | 90 | | | | | | | |
| Sand | | s | 90 | 125 | | | | | | | |
| Red Rock | | s | 125 | 147 | | | | | | | |
| Slate | dark | s | 147 | 160 | | | | | | | |
| Sand | light | h | 160 | 170 | | | | | | | |
| Red Rock | red | s | 170 | 200 | | | | | | | |
| Slate | white | s | 200 | 245 | | | | | | | |
| Lime | white | h | 245 | 265 | | | | | | | |
| Sand | gray | h | 265 | 320 | | | | | | | |
| Sl.&She | dark | s | 320 | 350 | | | | | | | |
| Rd. Rock | rd. | s | 350 | 360 | | | | | | | |
| Wh. Sla | white | s | 360 | 380 | | | | | | | |
| Rd. Rk. | red | s | 380 | 406 | | | | | | | |
| Wh. Sla | white | s | 406 | 470 | | | | | | | |
| Lime | white | h | 470 | 515 | | | | | | | |
| Red Rk. | red | s | 515 | 560 | | | | | | | |
| Shells | white | h | 560 | 590 | | | | | | | |
| Red Rock | red | s | 590 | 630 | | | | | | | |
| Slate | white | s | 630 | 697 | | | | | | | |
| Sand | gray | h | 697 | 730 | | | | | | | |
| Sl. Shell | white | h | 730 | 900 | | | | | | | |
| Big Rd. | red | s | 900 | 950 | | | | | | | |
| Slate | dark | s | 950 | 1010 | | | | | | | |
| Pink rk. | pink | s | 1010 | 1040 | | | | | | | |
| Sandy | gray | h | 1040 | 1050 | | | | | | | |
| Red rock | red | s | 1050 | 1120 | | | | | | | |
| Sl.&Shel. | white | h | 1120 | 1185 | | | | | | | |
| Sand | gray | h | 1185 | 1205 | | | | | | | |
| Sl.&Shell | gray | h | 1205 | 1280 | | | | | | | |
| Sand | gray | s | 1280 | 1300 | | | | | | | |
| Sl.&Shel | white | h | 1300 | 1390 | | | | | | | |
| Sand | gray | h | 1390 | 1410 | | | | | | | |
| Slate | dark | s | 1410 | 1425 | | | | | | | |
| Sand | gray | h | 1425 | 1466 | | | | | | | |
| Slate | black | s | 1466 | 1530 | | | | | | | |
| Sand 1st Salt | white | h | 1530 | 1550 | | | | | | | |
| Slate | black | s | 1550 | 1565 | | | | | | | |
| Sand 2nd Salt | white | h | 1565 | 1585 | Gas 1578 | | | | | | |
| Slate | dark | s | 1585 | 1640 | | | | | | | |
| Sand 3rd Salt | white | h | 1640 | 1780 | Gas 1745 | | | | | | |
| Break | dark | s | 1780 | 1785 | | | | | | | |
| Sand MAX | dark | h | 1785 | 1860 | Gas 1843 | | | | | | |
| Big Lime | white | h | 1860 | 1937 | | | | | | | |
| Keener Sand | lgt. | med | 1937 | 1947 | | | | | | | |
| Big Injun | light | h | 1947 | 2048 | | | | | | | |