

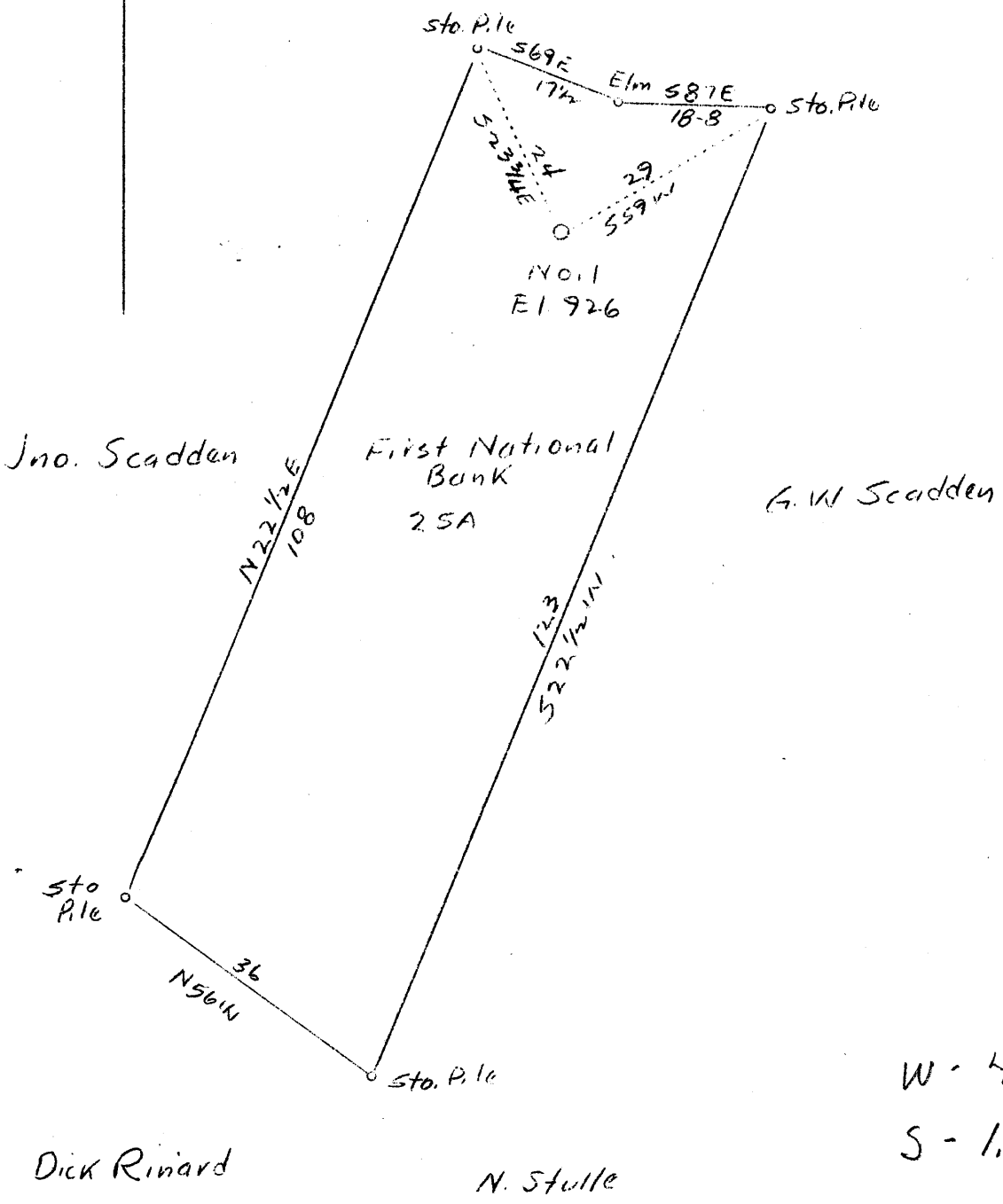
hm

1 2 3

LATITUDE 39° 20'

LONGITUDE 81° 05'

W.R. Noland G.A. Noland



W - 4.79  
S - 1.19

Location

Company	Glen F. McBurney	STATE OF WEST VIRGINIA Department of Mines OIL & GAS DIVISION Charleston
Address	% W. H. Stephens, Pennsboro, W. Va.	
Farm	First Nat'l Bank of St. Marys	WELL LOCATION MAP File No. <u>PLEAS-162</u>
Acres	25	
Well (Farm) No.	1	x Denotes location of well on U. S. Topographic Maps, scale 1 to 62,500, latitude and longitude lines being represented by border lines as shown.  - Denotes one inch spaces on border line of original tracing.
Elevation (SL)	926	
Quadrangle	St. Marys SC	
County	Pleasants	
District	Jefferson	
Engineer	A. K. Westfall	
Eng. Reg. No.	Deputy County Surveyor Ritchie County	
Date	Oct. 2, 1939	
Scale	1" = 20 poles	

X 5-5 Hogpen Run (372) ASD

WEST VIRGINIA DEPARTMENT OF MINES  
OIL & GAS DIVISION  
WELL RECORD

Permit No. Pleas-162  
St. Marys Quad.

Gas Well

CASING & TUBING  
(No record given)

Company Glenn F. McBurney  
Address 1201 Berkshire Ave., Pittsburgh, Pa.  
Farm 1st Nat'l Bank Acres 102  
Well No. 1 ELEV. 1095  
District Jefferson - Pleasants County  
Surface Wm. Noland, Pike, W. Va.  
Mineral 1st Nat'l Bank, St. Marys, W. Va.  
Commenced Sept. 13, 1939  
Completed Dec. 5, 1939  
Volume 285,000 c.f.  
Rock Pressure 265 lbs. 24 hrs.  
Water -

Sand	bn	h	406	492
Sand	bn	h	920	1003
1st Salt S.	wh	h	1205	1227
2nd Salt S.	wh	h	1342	1391
3rd Salt S.	wh	h	1487	1496
Maxton	bn	h	1662	1710
Big Lime	wh	h	1710	1790
Big Injun.	wh	h	1790	2160
Bottom Hole				2245

Gas	1385	to	1390
"	1489	"	1496
"	1945	"	1992
"	2070	"	2103

1710  
1095  
615