

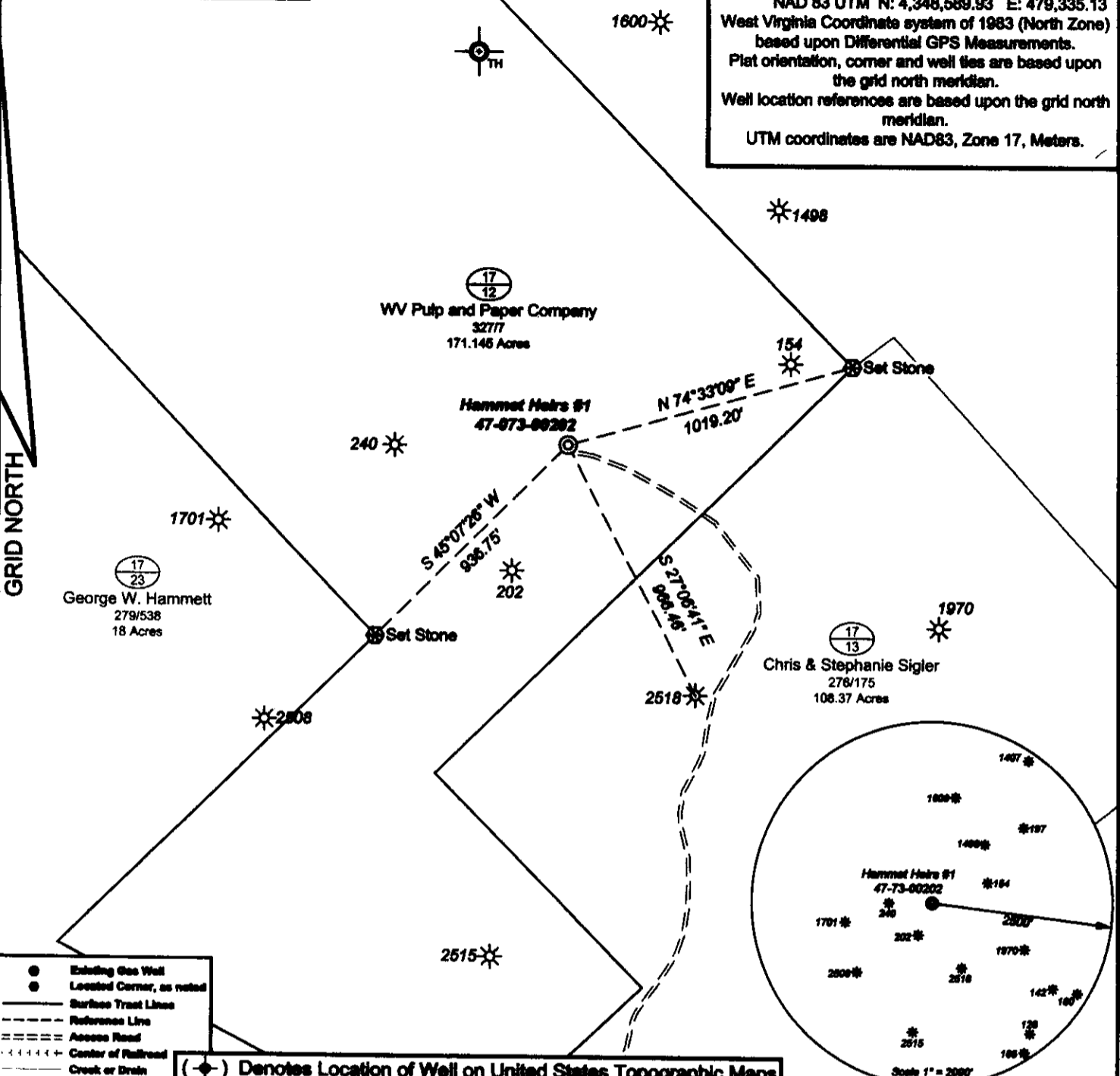
4707300202

TH: 8854' LAT: 39-17-30

TH: 1909' LON: 81-12-30

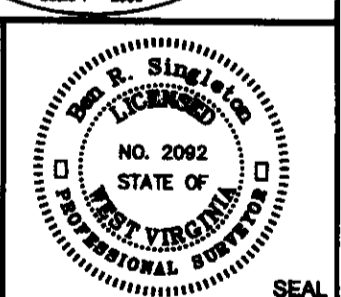
Hammet Heirs #1
West Virginia Department of Environmental Protection

Notes:
Hammet Heirs #1 coordinates are
NAD 83 N: 291,205.78 E: 1,478,140.21
NAD 83 Lat: 39.286428 Long: -81.239616
NAD 83 UTM N: 4,348,589.93 E: 479,335.13
West Virginia Coordinate system of 1983 (North Zone)
based upon Differential GPS Measurements.
Plat orientation, corner and well ties are based upon
the grid north meridian.
Well location references are based upon the grid north
meridian.
UTM coordinates are NAD83, Zone 17, Meters.



I, the undersigned, hereby certify that this plat is correct to the best of my knowledge and belief and shows all the information required by law and the regulations issued and prescribed by the Department of Environmental Protection.

Don R. Singleton
P.S. 2092



FILE NO: 43-23
DRAWING NO: Hammet Heirs #1
SCALE: 1" = 500'
MINIMUM DEGREE OF ACCURACY: 1:2500
PROVEN SOURCE OF ELEVATION: NGS CORS Station

STATE OF WEST VIRGINIA
DEPARTMENT OF ENVIRONMENTAL PROTECTION
OIL AND GAS DIVISION

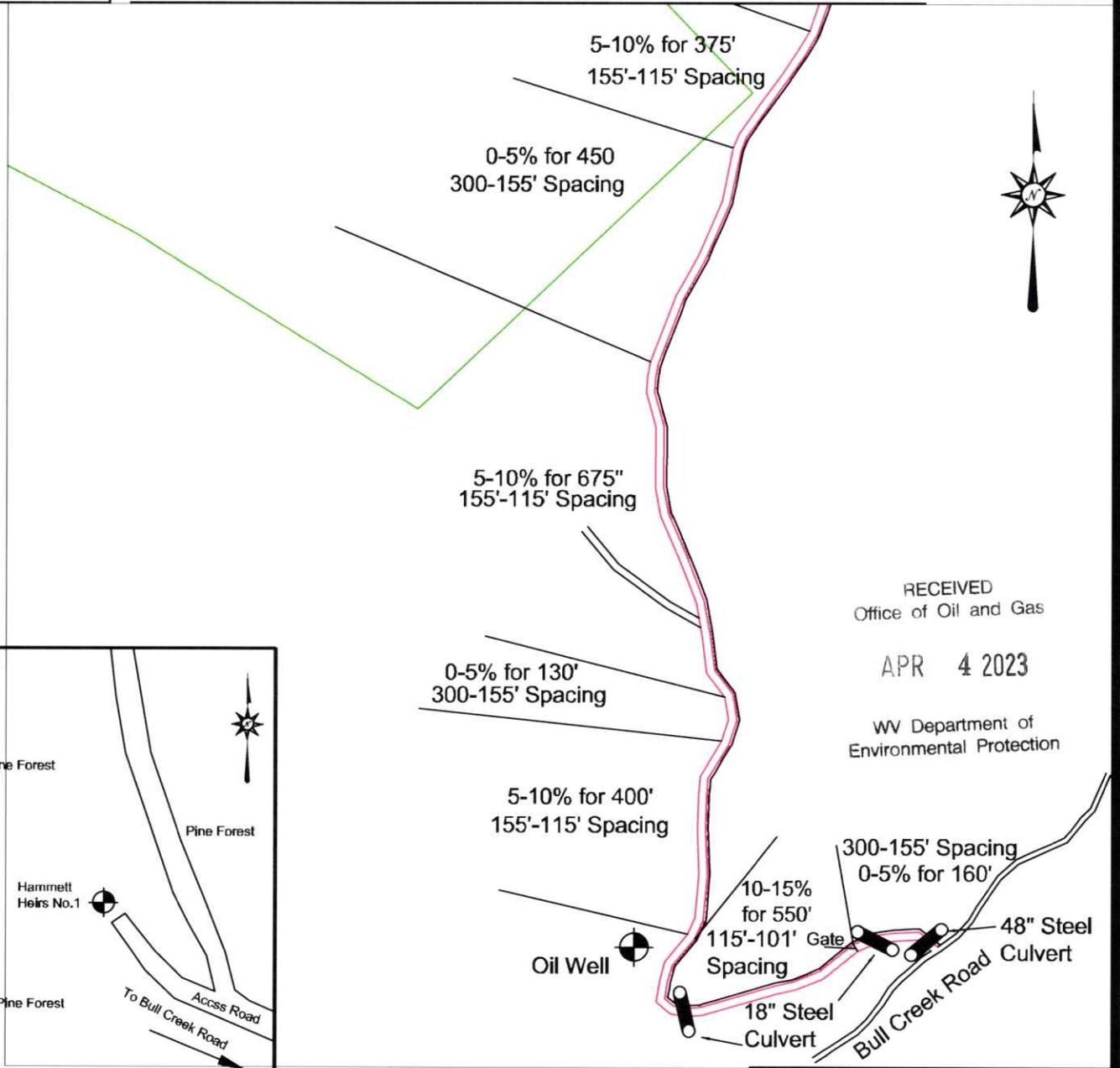
DATE: March 06 20 23
OPERATOR'S WELL NO.: Hammet Heirs #1
API WELL NO
47 - 73 - 00202
STATE COUNTY PERMIT

WELL TYPE: OIL GAS LIQUID INJECTION WASTE DISPOSAL
(IF GAS) PRODUCTION: STORAGE DEEP SHALLOW
LOCATION: ELEVATION: 1094.64' WATERSHED Bull Creek QUADRANGLE: Schultz
DISTRICT: Jefferson COUNTY: Pleasants
SURFACE OWNER: WV Pulp and Paper Company ACREAGE: 171.145
ROYALTY OWNER: LEASE NO: ACREAGE:
PROPOSED WORK: DRILL CONVERT DRILL DEEPER FRACTURE OR STIMULATE PLUG OFF OLD FORMATION
 PERFORATE NEW FORMATION OTHER PHYSICAL CHANGE IN WELL (SPECIFY)
 PLUG AND ABANDON CLEAN OUT AND REPLUG TARGET FORMATION: Unknown ESTIMATED DEPTH: Unknown

WELL OPERATOR: Unknown - DEP Paid Plugging Contract WVDEP DESIGNATED AGENT: H. Jason Harmon
ADDRESS: 601 57th Street ADDRESS: 601 57th Street
Charleston, WV 25304 Charleston, WV 25304

WW-9

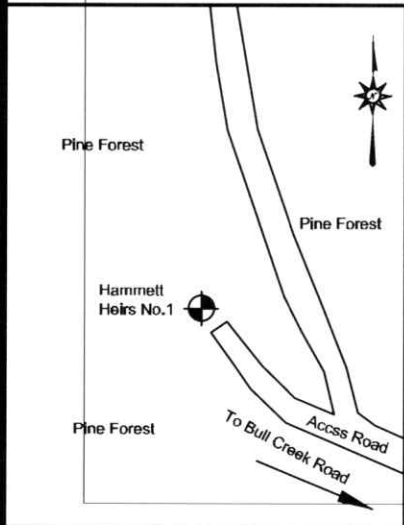
EG23032 (47-075-00202)



RECEIVED
Office of Oil and Gas

APR 4 2023

WV Department of
Environmental Protection



Unless otherwise noted, all roads shown hereon are existing and shall be maintained in accordance with WV D.E.P., Office of Oil and Gas Erosion and Sediment Control Field Manual as revised 5/2012

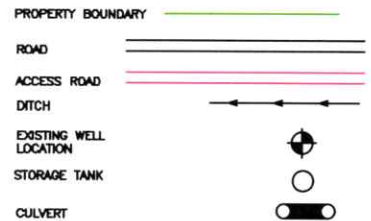
Entrances upon county/state roads shall be maintained in accordance with WV D.O.T. regulations, however, separate permits may be required by the WV D.O.T.

Sediment basins (traps) and appropriate erosion control barriers are to be constructed at all culverts and cross-drains as required in the aforementioned Erosion and Sediment Control Field Manual. Where field conditions dictate, alternative erosion control measures shall be enacted as required.

Earthwork contractors are responsible for notification to the operator and inspector prior to any deviation from this plan.

DRAWN BY: Mason Thomas

DATE: March 14, 2023



SURVEYING AND MAPPING SERVICES PERFORMED BY:
ALLEGHENY SURVEYS, INC.

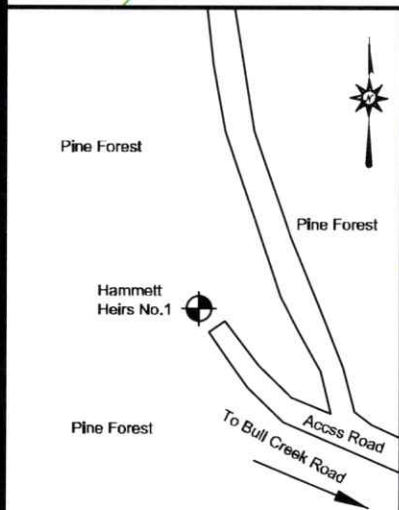
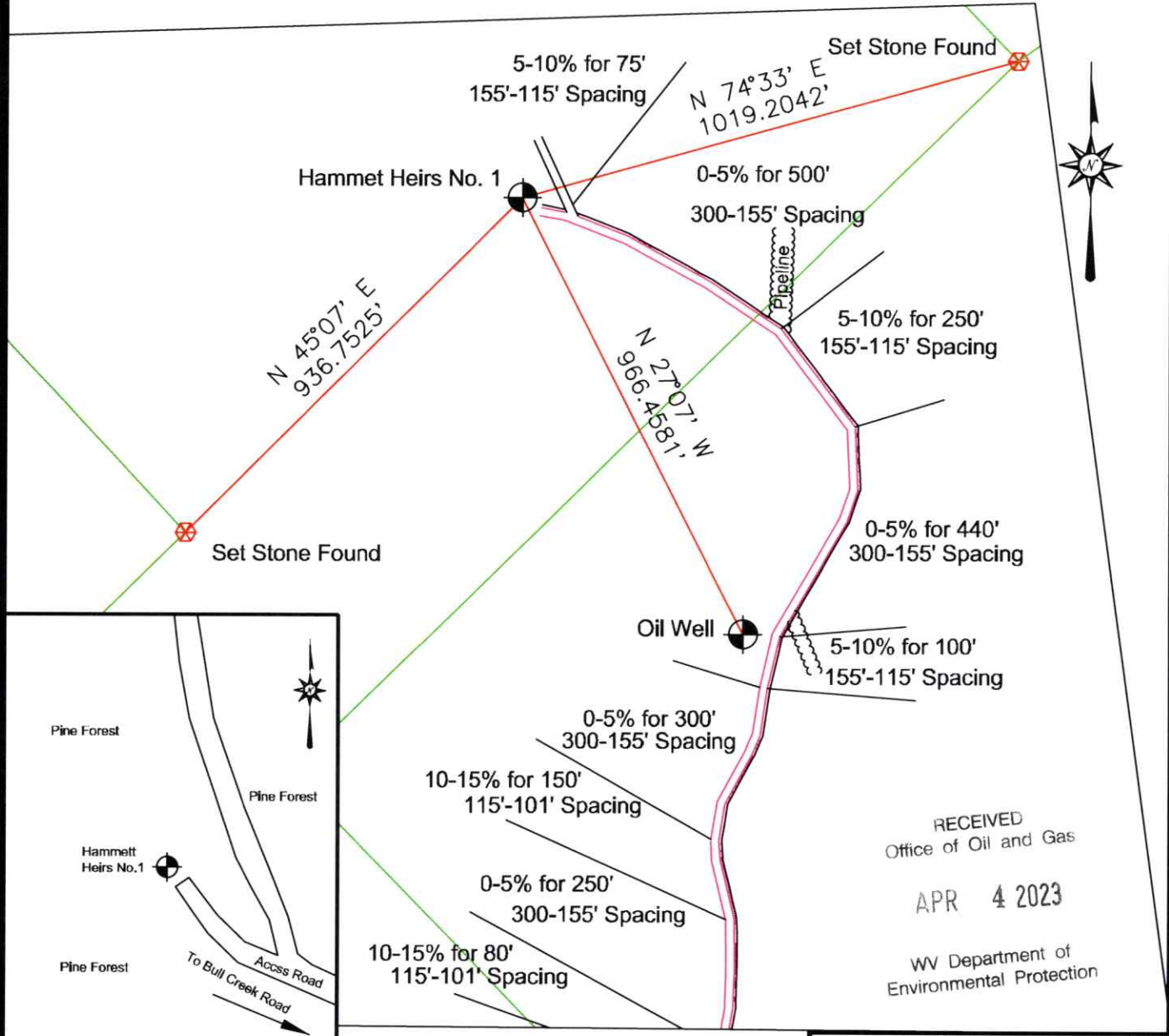
P.O. BOX 438
BIRCH RIVER, WV 26610
PH: (304) 649-8606
FAX: (304) 649-8608

1-800-482-8606

04/14/2023

WW-9

EG23032 (47-075-00202)



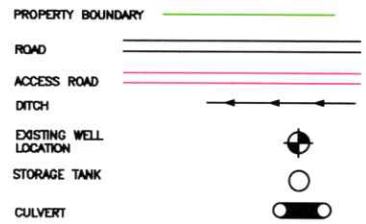
RECEIVED
Office of Oil and Gas
APR 4 2023
WV Department of
Environmental Protection

Unless otherwise noted, all roads shown hereon are existing and shall be maintained in accordance with WV D.E.P., Office of Oil and Gas Erosion and Sediment Control Field Manual as revised 5/2012

Entrances upon county/state roads shall be maintained in accordance with WV D.O.T. regulations, however, separate permits may be required by the WV D.O.T.

Sediment basins (traps) and appropriate erosion control barriers are to be constructed at all culverts and cross-drains as required in the aforementioned Erosion and Sediment Control Field Manual. Where field conditions dictate, alternative erosion control measures shall be enacted as required.

Earthwork contractors are responsible for notification to the operator and inspector prior to any deviation from this plan.



DRAWN BY: Mason Thomas

DATE: March 14, 2023



SURVEYING AND MAPPING SERVICES PERFORMED BY:
ALLEGHENY SURVEYS, INC.
P.O. BOX 438
BIRCH RIVER, WV 26610
PH: (304) 649-8606
FAX: (304) 649-8608
1-800-482-8606