

25

Latitude

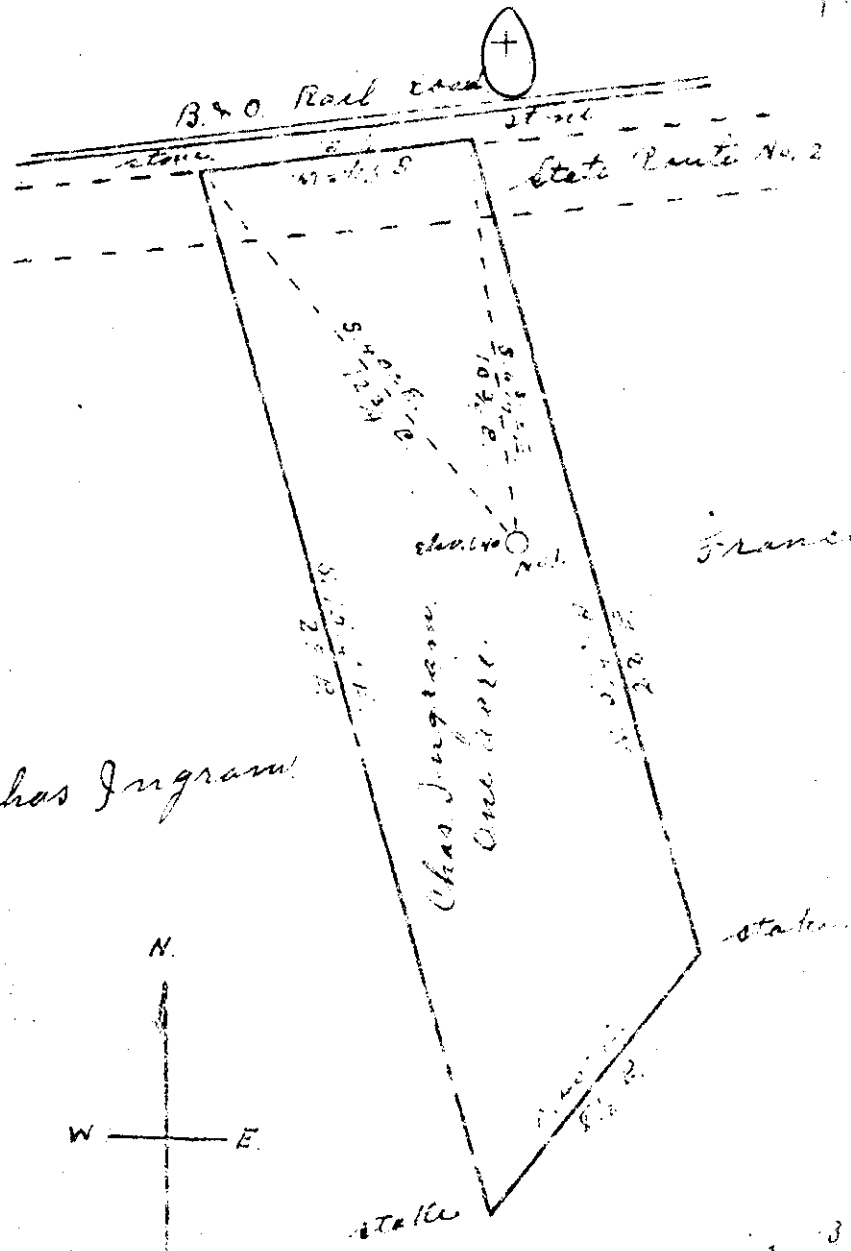
39° 25'

81° 10'

Longitude

Section

2.21S
4.47W



New Location
 Drill Deeper
 Abandonment

Company C. E. Smith
 Address Burrhead W. Va.
 Farm Chas Ingram
 Tract _____ Acres 1 Lease No. _____
 Well (Farm) No. 1 Serial No. _____
 Elevation (Spirit Level) 640'
 Quadrangle St. Marys WC
 County Pleasant District Washington
 Engineer By Geo. W. Smith
 Engineer's Registration No. _____
 File No. _____ Drawing No. _____
 Date Sept. 14, 1943 Scale 1" = 50'

STATE OF WEST VIRGINIA
 DEPARTMENT OF MINES
 OIL AND GAS DIVISION
 CHARLESTON

WELL LOCATION MAP
 FILE NO. PLEAS-283

+ Denotes location of well on United States
 Topographic Maps, scale 1 to 62 500, lat-
 itude and longitude lines being represented
 by border lines as shown.
 - Denotes one inch spaces on border line
 of original tracing.