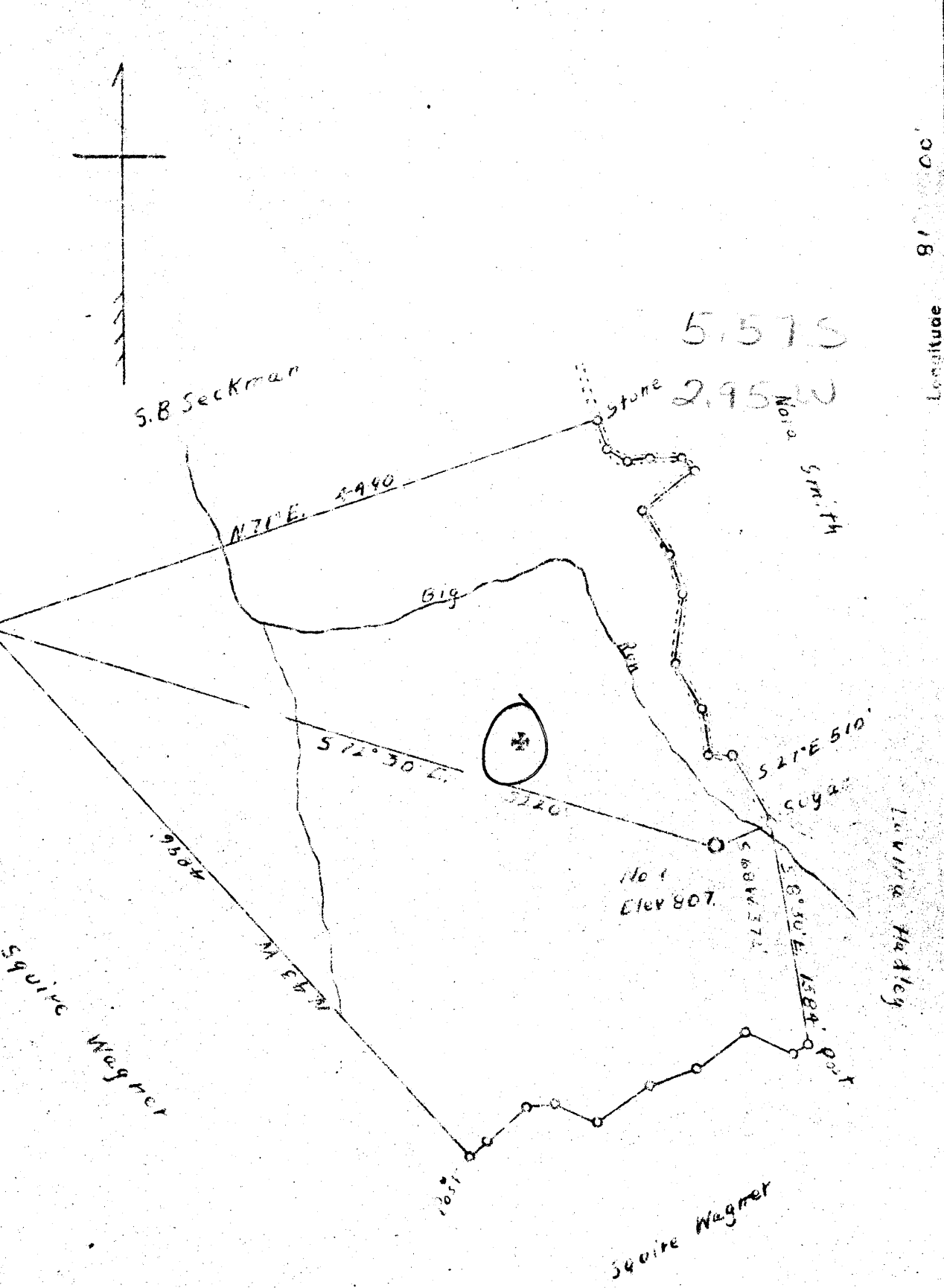


MM

Latitude 39° 30'



New Location  X  
 Well Deeper   
 Abandonment

Survey *C.R. Wagner*

Company Union Producing Company  
 Address Highland, W. Va.  
 Farm Harvey Wagner  
 Tract \_\_\_\_\_ Acres 3.25 Lease No. \_\_\_\_\_  
 Well (Farm) No. 1 Serial No. \_\_\_\_\_  
 Elevation (Spirit Level) 807  
 Quadrangle St. Marys NE  
 County Pleasant District Union  
 Engineer R. Fleischert  
 Engineer's Registration No. 545  
 File No. \_\_\_\_\_ Drawing No. \_\_\_\_\_  
 Date Nov 4, 1898 Scale 1" = 100'

STATE OF WEST VIRGINIA  
 DEPARTMENT OF MINES  
 OIL AND GAS DIVISION  
 CHARLESTON

**WELL LOCATION MAP**  
 FILE NO. PLEAS 285

+ Denotes location of well on United States Topographic Maps, scale 1 to 62,500, latitude and longitude lines being represented by border lines as shown

- Denotes one inch spaces on border line of original tracing.

WEST VIRGINIA DEPARTMENT OF MINES  
OIL & GAS DIVISION  
W E L L R E C O R D

Permit No. Pleas 285

St. Marys Quad.

Company

Address

Farm

Location

Well No.

District

Surface

Mineral

Commenced

Completed

Not shot

Oil

Water

Union Producing Company

Highland, W.Va.

Harvey & Ona Wagner A 325

Big Run

1 Elev. 807'

Union Pleasants County

Harvey & Ona Wagner, Bens Run, W.Va.

Same

Jan. 7, 1949

Feb. 3, 1949

Big flow at 7 to 50'

None

Dry Hole  
CASING & TUBING

8 1/2    260'    None

Clay	Red	S	0	7	Shale	Blk	S	860	865
Stone	Wh	H	7	50	Red Rock		S	865	870
Red Rock		S	50	55	Shale	Wh	S	870	875
Shale	Gr	H	55	70	Sand, 2nd Cow Run		H Bl	875	900
Red Rock		S	70	85	Slate	Blk	S	900	905
Rock	Gr	H	85	95	Red Rock		S	905	938
Shale	Gr	H	95	105	Shale	Wh	S	938	960
Stone	Wh	H	105	120	Slate	Wh	S	960	976
Red Rock		M	120	135	Slate	Bl	S	976	985
Siltstone	Gr	H	135	160	Sand 3rd Cow Run	Wh	H	985	990
Sand	Gr	H	160	175	Shale	Bl	S	990	995
Red Rock		H	175	185	Shale	Gr	H	995	1012
Shale	Gr	H	185	195	Slate	Blk	S	1012	1035
Red Rock	Cavey	S	195	200	Sand	Wh	H	1035	1038
Shale	Gr	H	200	220	Lime	Gr	H	1038	1045
Lime	Gr	H	220	235	T.D.				1045
Red Rock		S	235	245					
Shale	Gr	S	245	255					
Lime	Gr	H	255	265					
Red Rock		S	265	275					
Shale	Gr	S	275	320					
Slate	Wh	S	320	330					
Red Rock		S	330	350					
Shale	Gr	S	350	370					
Sand	Wh	H	370	385					
Shale	Gr	S	385	400					
Red Rock		S	400	405					
Shale	Gr	S	405	435					
Sand	Wh	H	435	445					
Slate	Blk	S	445	450	Pittsburgh Coal				
Slate	Wh	S	450	475					
Red Rock		H	475	490					
Sand	Wh	H	490	500					
Lime	Gr	H	500	505					
Slate	Wh	H	505	515					
Shale	Pink	H	515	530					
Lime	Gr	H	530	545					
Red Rock		S	545	560					
Lime	Gr	H	560	570					
Shale	Red	H	570	600					
Slate	Wh	H	600	605					
Red Rock		S	605	620					
Lime		H	620	630					
Red Rock		S	630	650					
Sand	Wh	H	650	660					
Sand Cow Run	Bl	H	660	715					
Slate	Blk	S	715	730					
Red Rock		S	730	770	Cavey				
Slate	Wh	S	770	790					
Shale	Bl	H	790	795					
Shale	Pink	S	795	805					
Slate	Blk	S	805	810					
Slate	Wh	S	810	850					
Lime	Gr	H	850	860					